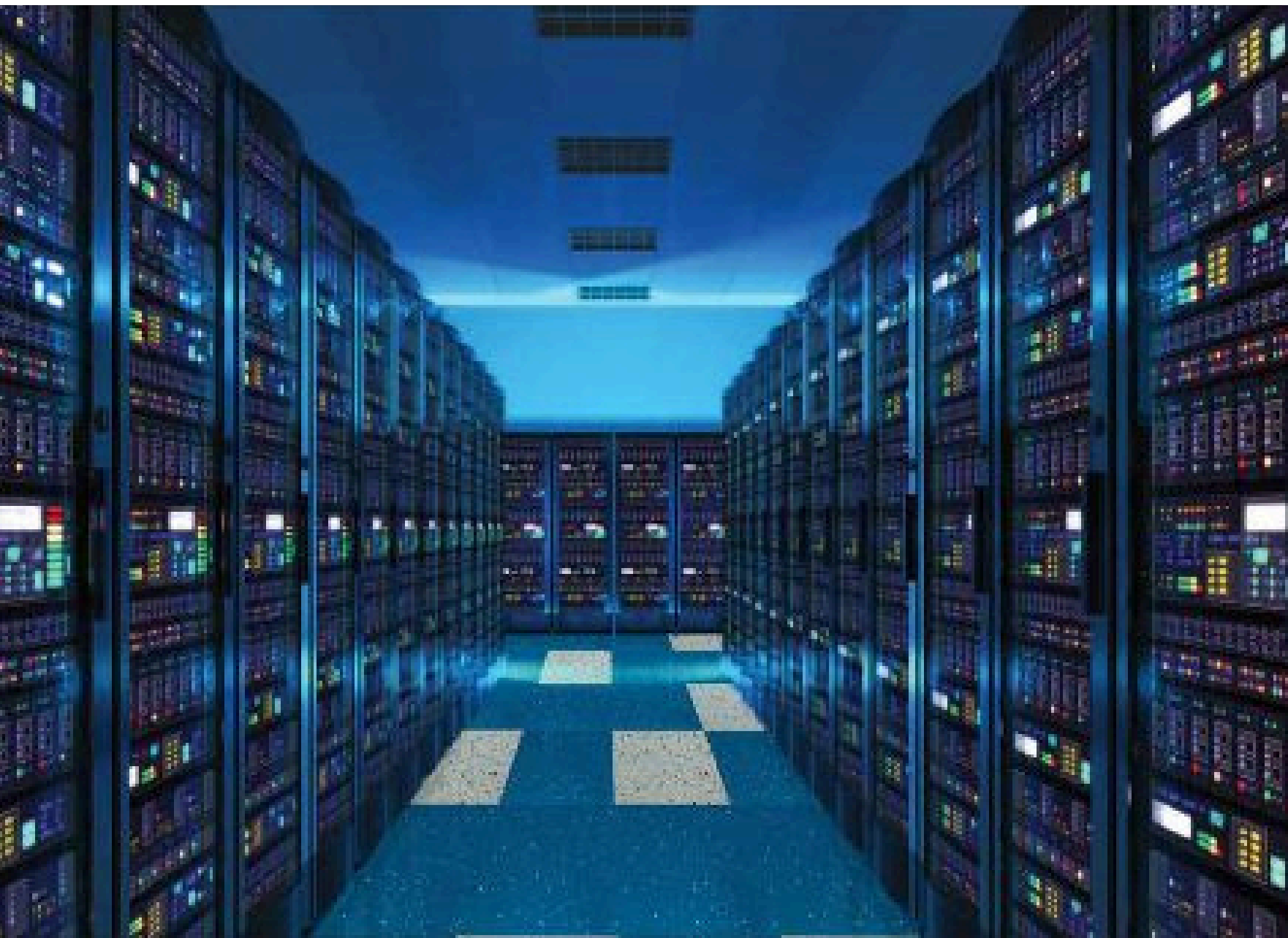


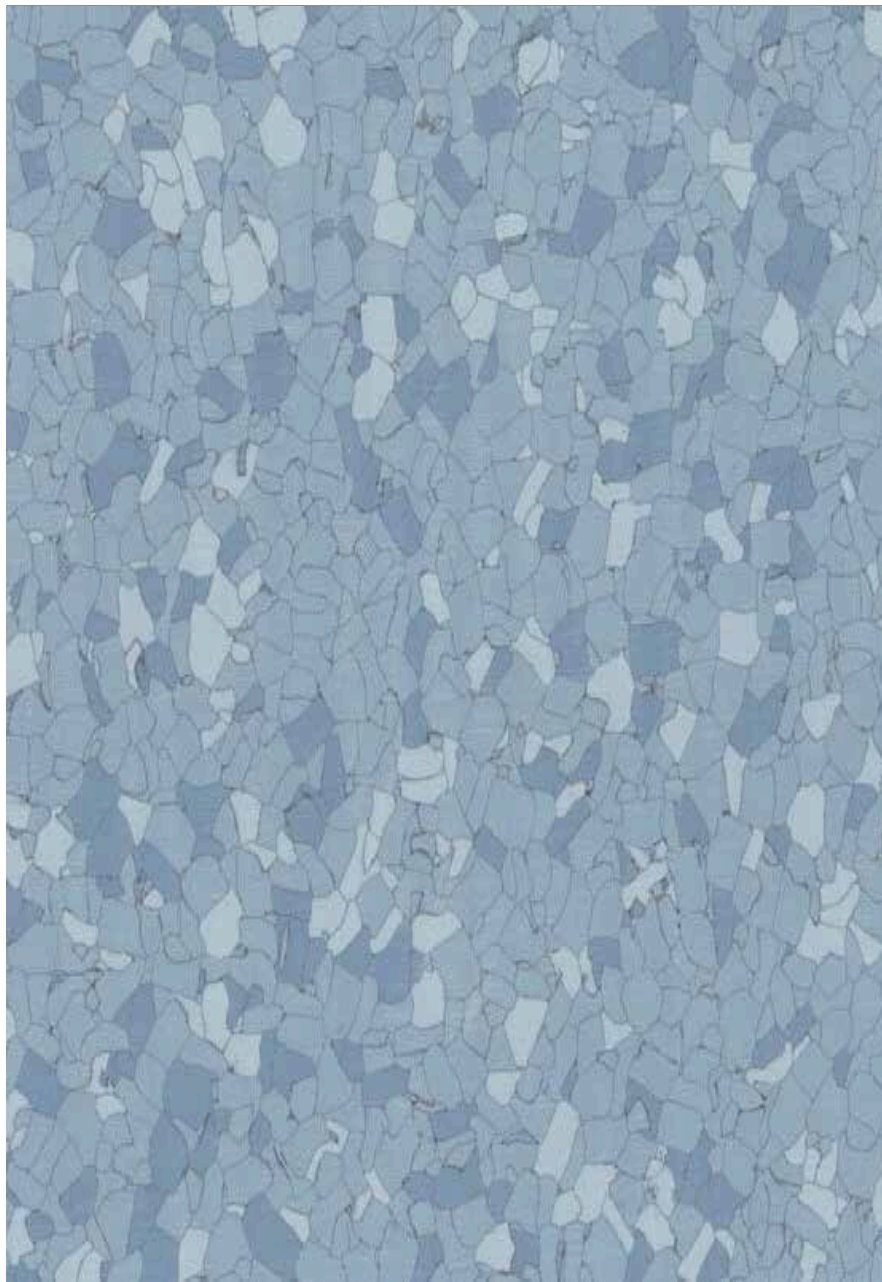
# ELECTRO+



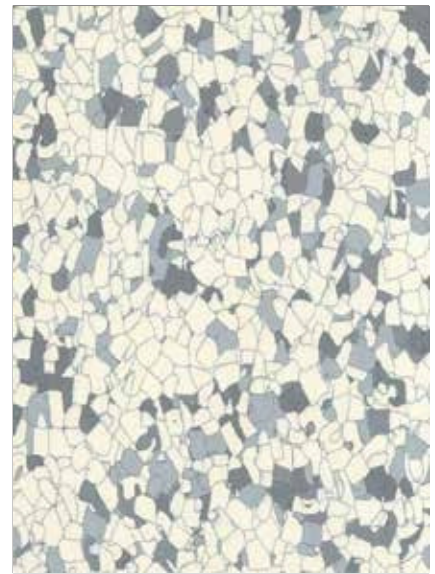
TILES  608x608mm  $10^4 \leq R_t \leq 10^6 \Omega$  (EN 1081)



34-43



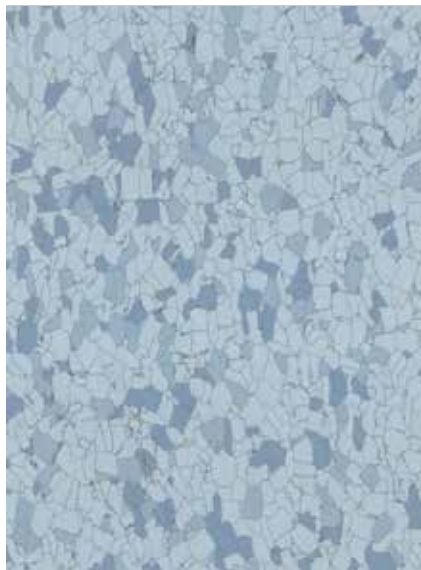
0638 Blue



0636 Grey



0635 White



0637 Light Blue



0639 Green

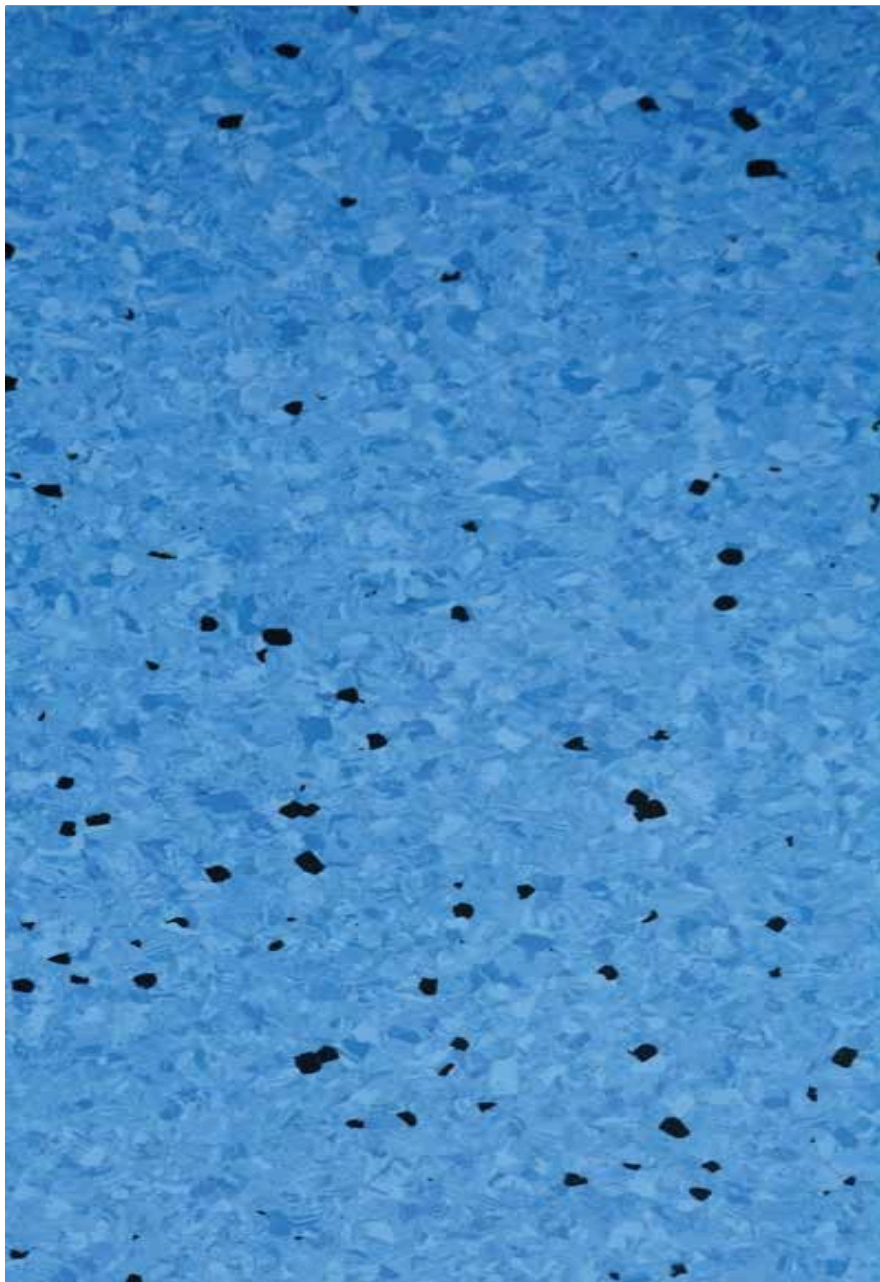


0640 Beige

ROLLS  2x20m  $10^4 \leq R_t \leq 10^6 \Omega$  (EN 1081)



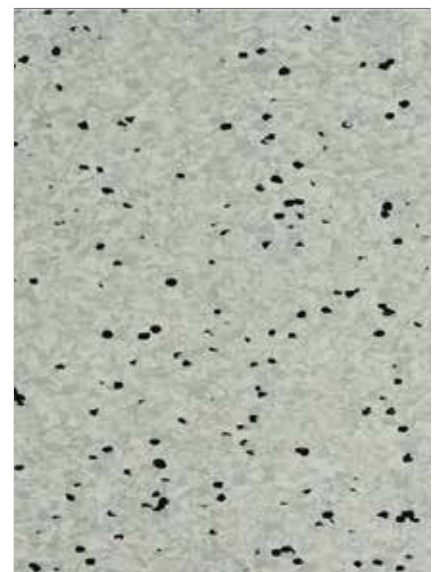
34-43



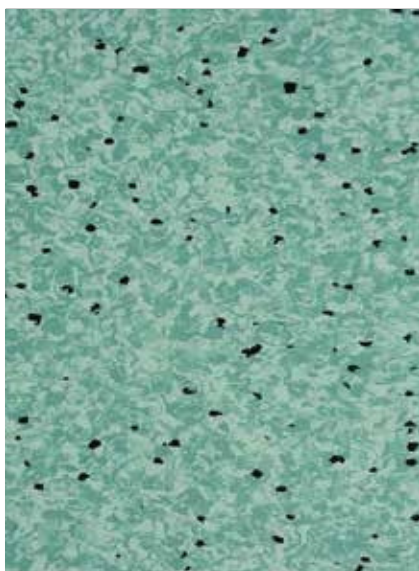
0354 Blue



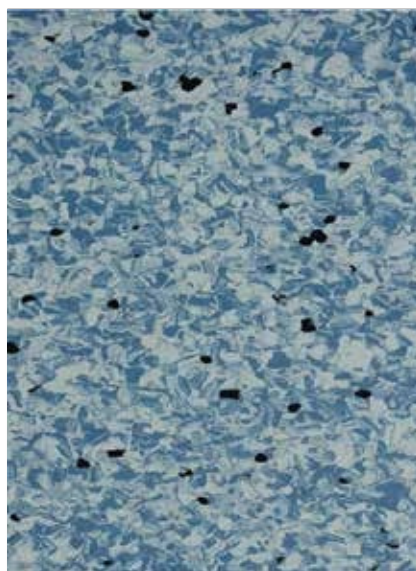
0352 Grey



0350 Light Grey



0355 Green



0356 Ink Blue



0353 Beige

DESCRIPTION				
Total thickness	EN 428	mm	2.0	2.0/3*
Weight	EN 430	g/sq.m	2900	3440
Width/length of sheet	EN 426	cm / lm	200 / 20	-
Tile size	EN 427	mm	-	608 x608
Number of tiles per package	-	-	-	20
CLASSIFICATION				
Standard / product specification	-	-	EN10581	EN10581
European classification	EN 685	class	34-43	34-43
Fire rating	EN 13501-1	class	Bfl - s1	Bfl - s1
Electrical resistance	EN 1081	Ohm	$10^4 \leq R_t \leq 10^6$	$10^4 \leq R_t \leq 10^6$
Static electrical propensity	EN 1815	kV	< 2	< 2
Slip resistance wet	DIN 51 130/BGR 181	class	R9	R9
PERFORMANCE				
Wear resistance	EN 660.2	mm <sup>3</sup>	≤ 4.0	≤ 4.0
Wear group	NF 189	-	T	P
Type binder content	EN ISO 10581	Type	I	II
Dimensional stability	EN 434	%	≤ 0.40	≈ 0.25
Residual indentation	EN 433	mm	≈ 0.03	≈ 0.03
Castor chair test (Type W )	EN 425	-	OK	OK
Thermal conductivity	EN 12 524	W/(m.K)	0.25	0.25
Colour fastness	EN 20 105 - B02	degree	≥ 6	≥ 6
Chemical resistance	EN 423	-	OK	OK
Surface treatment	-	-	Pur+ Protected	Pur+ Protected
ENVIRONMENT / INDOOR AIR QUALITY				
TVOC after 28 days	ISO 16000-6	µg/m <sup>3</sup>	< 10	< 10
CE MARKING				
	EN 14041			

\* Available in 3mm thickness. Special order with MOQ



### LCA

Eco-designed according to a product specific Life Cycle Analysis



### WELLNESS

Walking comfort < 75 dB



COMPOSITION  
100% REACH compliant



### INDOOR AIR QUALITY

TVOC emissions 100 times better than norm requirements (TVOC < 10 µg/m<sup>3</sup> after 28 days)



### RECYCLABILITY

100%



### RECYCLED CONTENT

25%

