



LUXURY

NYLUX

NYLON LUXURY CARPET PLANK



CORPORATE

Multi Scroll Heavy Duty Nylon Carpet Tile



LUXURY



CRAFTED FROM THE BEST
NYLON



LUXURY

Why Nylon Carpet Tiles?

- High-Strength Nylon Yarn
 - Superior
- Long-Lasting Beauty.
 - Easy Care
 - Design Freedom
- Comfort & Acoustics
- Sustainable Choice



NYLON

BUILT-IN SUSTAINABILITY

At HEGO, we believe performance and sustainability should go hand in hand. That's why our carpet tiles are designed with eco-conscious materials and manufacturing processes:

Solution Dyed Yarns – Our Nylon Carpet Tile series is made of 100% Solution Dyed Fibre which uses almost no water and reduces water pollution when compared to other dyeing methods by nearly 99%.

Low VOC emissions ($\leq 0.5 \text{ mg/m}^3$ /CRI GLP)
Formulated with low VOC materials to support improved indoor air quality and occupant well-being. Hence meeting the requirements of CRI Green Label Plus Program.

Excellent Light Fastness – Designed to retain colour vibrancy over time, even in areas exposed to light.

Reinforced Backings – Engineered for long life, reducing the need for early replacement

Low Waste Installation – Modular sizes minimize cutting and waste on-site

Recyclable Materials – Many components can be recycled at the end of their life cycle



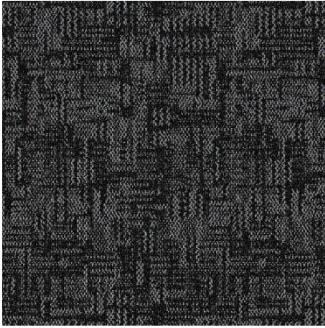


LUXURY

3 COLLECTIONS
12 OPTIONS
MULTIPLE DESIGN POSSIBILITIES !!

NYLUX
NYLON LUXURY CARPET PLANK

NEXUS



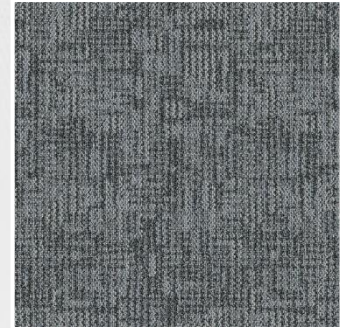
4574 BLACK



4575 CARBON G



4576 BROWN



4577 MID GREY

ATLAS



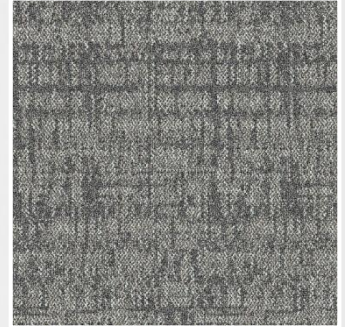
4570 CAMEL



4571 LIGHT BEIGE

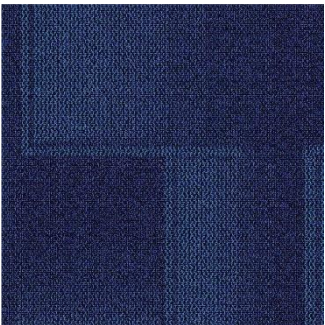


4572 MEDIUM BLUE

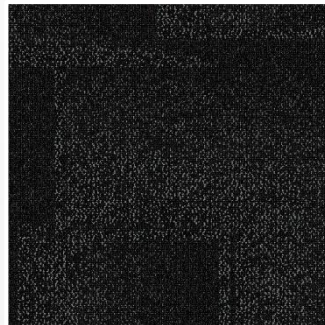


4573 LIGHT GREY

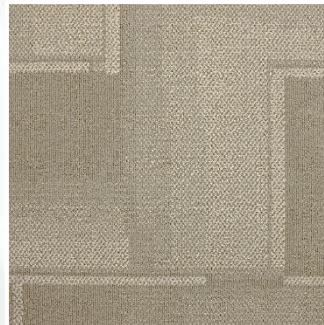
DIMENSION



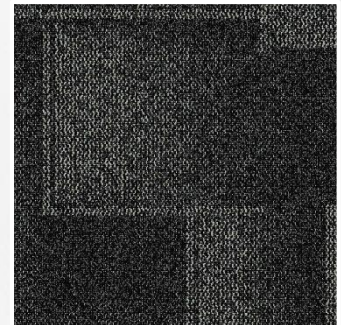
4580 OCEAN BLUE



4581 BLACK CARBON



4579 BEIGE BROWN



4578 ASH GREY

CORPORATE

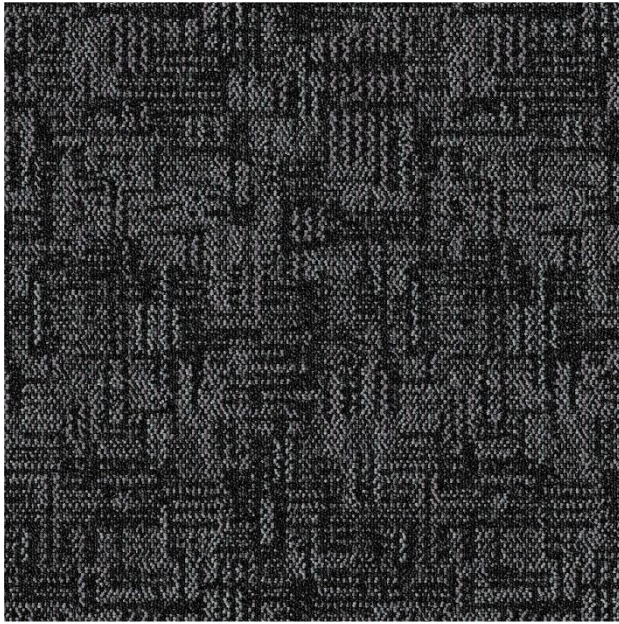
Multi Scroll Heavy Duty Nylon Carpet Tile



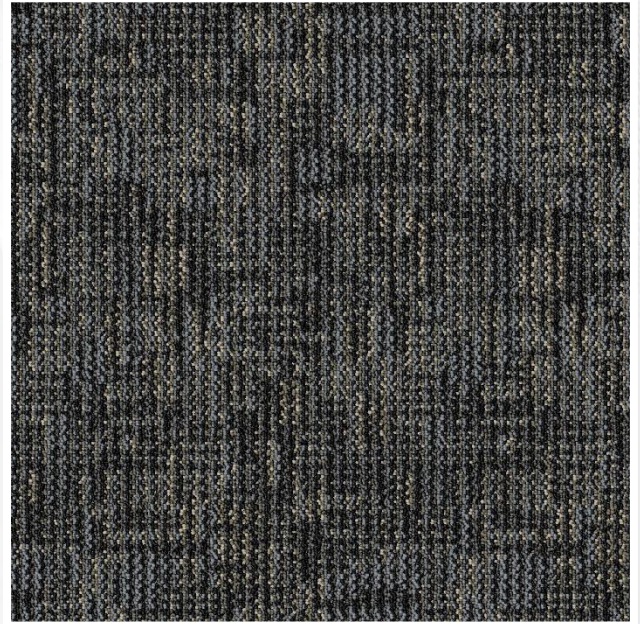
LUXURY

NYLUX
NYLON LUXURY CARPET PLANK

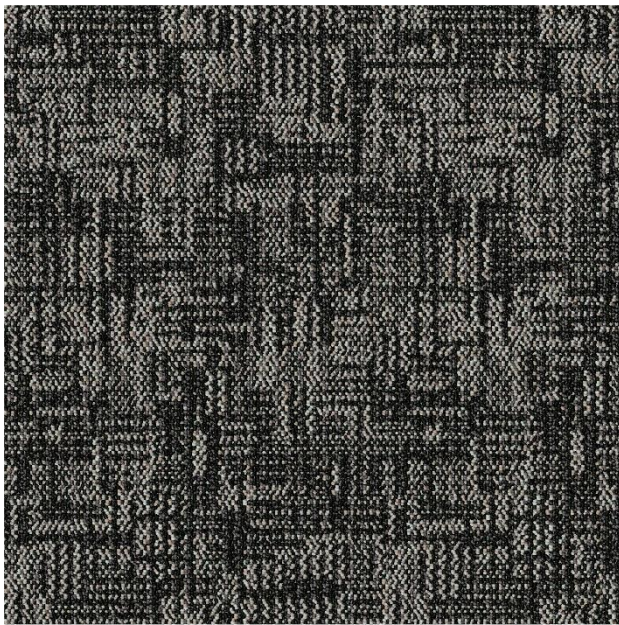
NEXUS



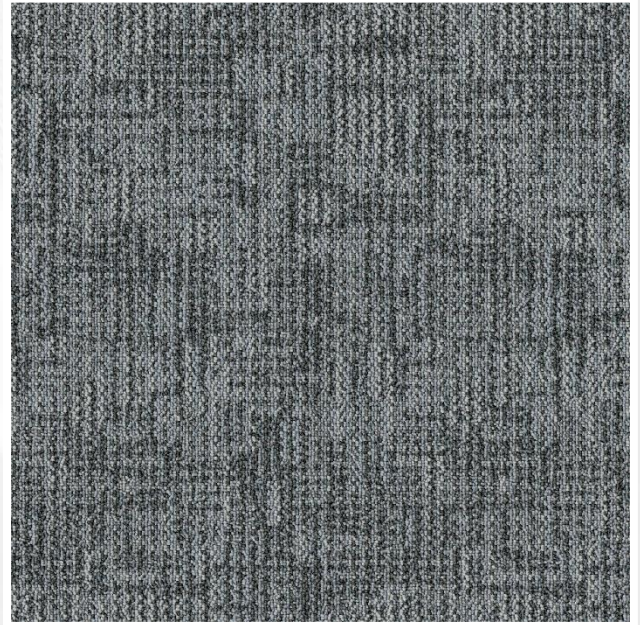
4574 BLACK



4575 CARBON G



4576 BROWN



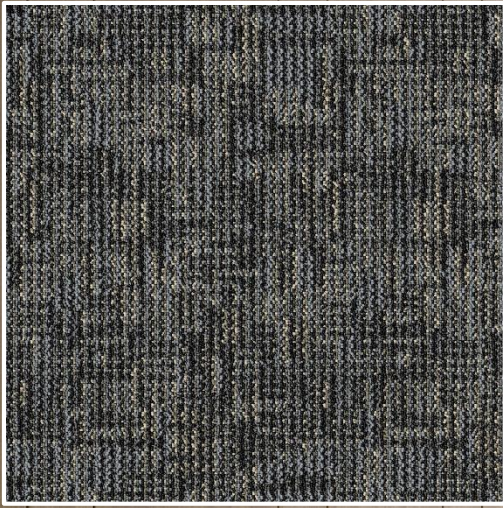
4577 MID GREY



BLACK 4574
(NEXUS)



NYLON



CARBON G 4575
(NEXUS)

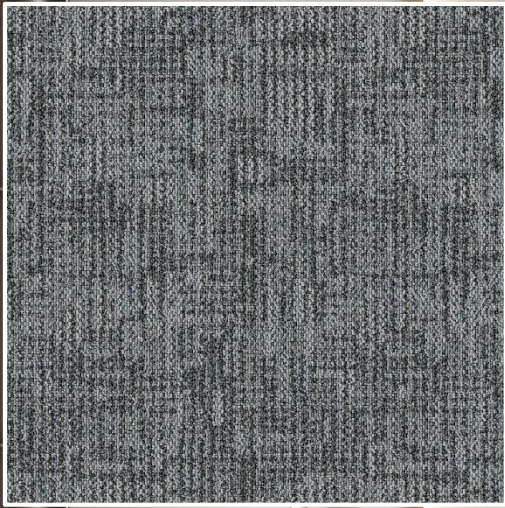


NYLON



4576 BROWN
(NEXUS)

NYLON



MID GREY 4577
(NEXUS)



NYLON



CARBON G 4575 & MID GREY 4577
(NEXUS)
MULTIPLE LAYING OPTIONS

NYLON



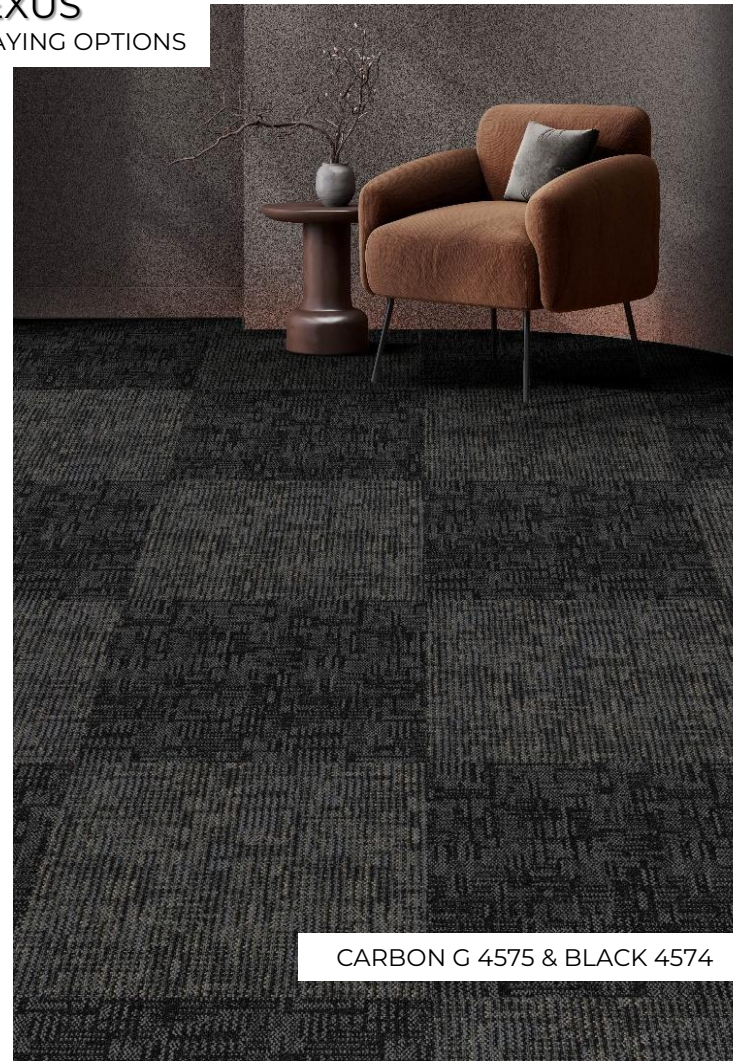


CARBON G 4575 &
BLACK 4574

NEXUS
MULTIPLE LAYING OPTIONS



CARBON G 4575 &
MID GREY 4577



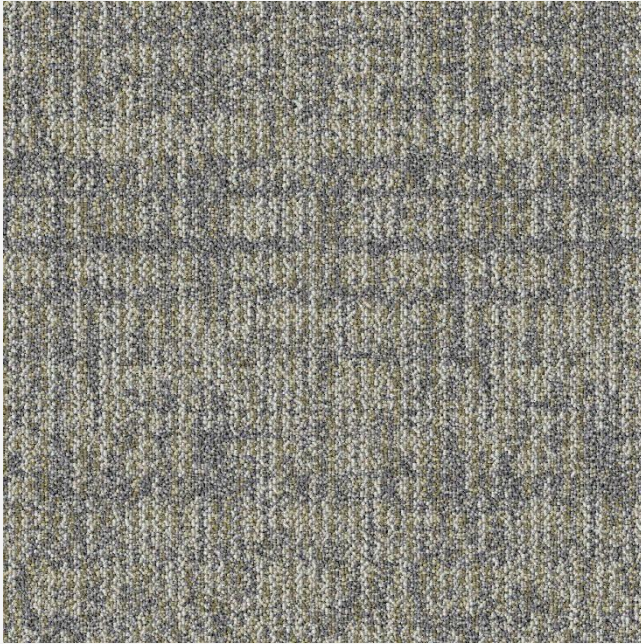
CARBON G 4575 & BLACK 4574



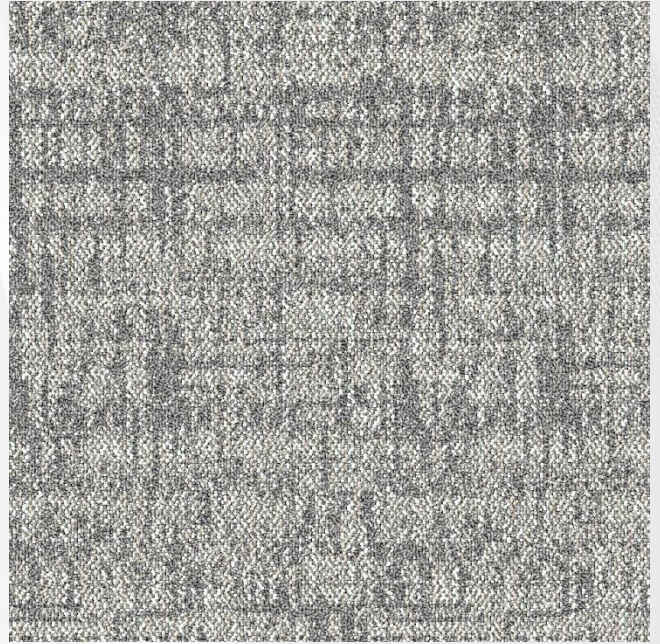
LUXURY

NYLUX
NYLON LUXURY CARPET PLANK

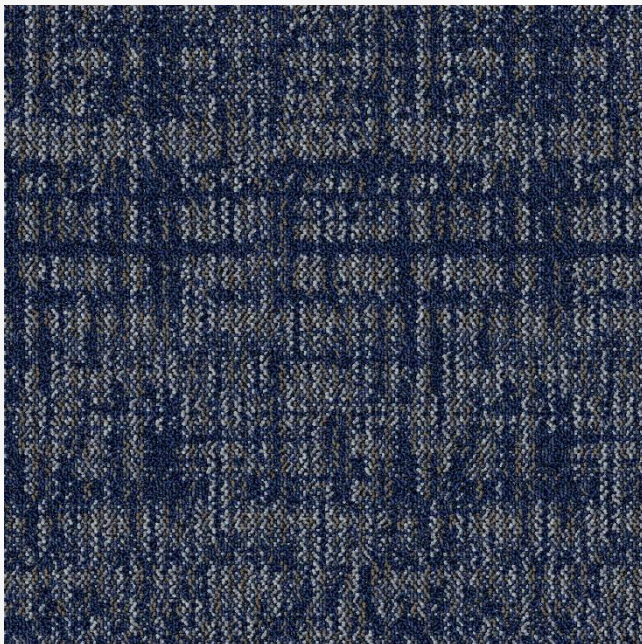
ATLAS



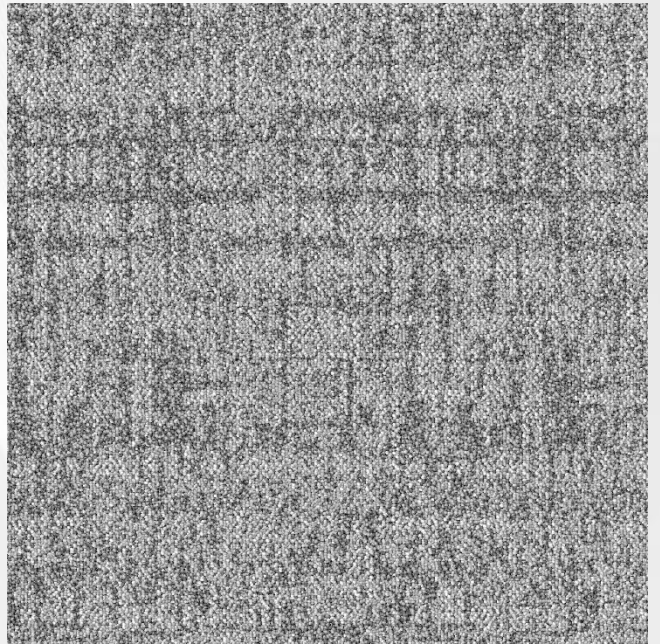
4570 CAMEL



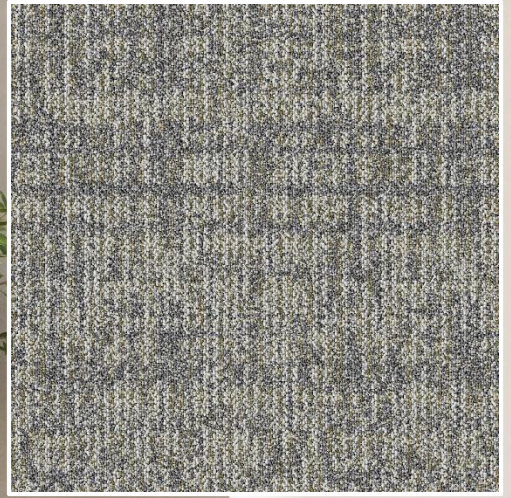
4571 LIGHT BEIGE



4572 MEDIUM BLUE



4573 LIGHT GREY

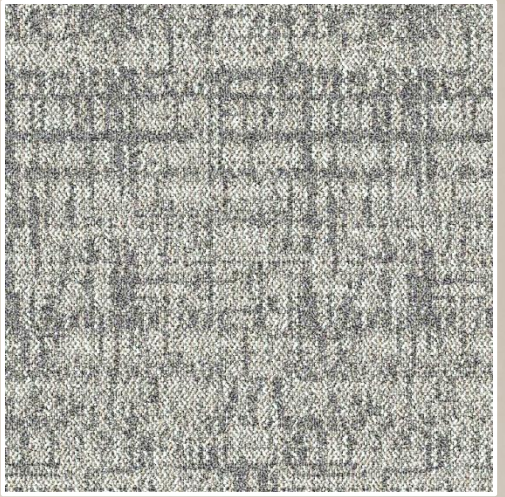


4570 CAMEL
(ATLAS)

NYLON

Hego
Quality. Innovation. Comfort.

LUXURY

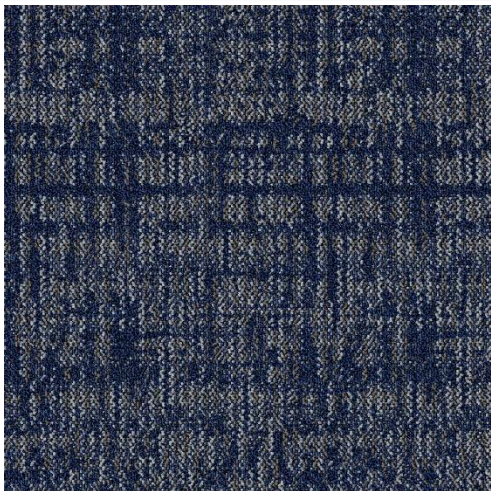


4571 LIGHT BEIGE
(ATLAS)

NYLON

Hego

LUXURY



4572 MEDIUM BLUE
(ATLAS)



NYLON



LUXURY



4573 LIGHT GREY
(ATLAS)

NYLON

Hego

LUXURY

Hego

LUXURY



4571 LIGHT BEIGE
& 4570 CAMEL
MULTIPLE LAYING OPTIONS



ATLAS
MULTIPLE LAYING OPTIONS



4572 MEDIUM BLUE &
4571 LIGHT BEIGE



4571 LIGHT BEIGE



4572 MEDIUM BLUE
4573 LIGHT GREY

ATLAS
MULTIPLE LAYING OPTIONS



4572 MEDIUM BLUE
& 4570 CAMEL



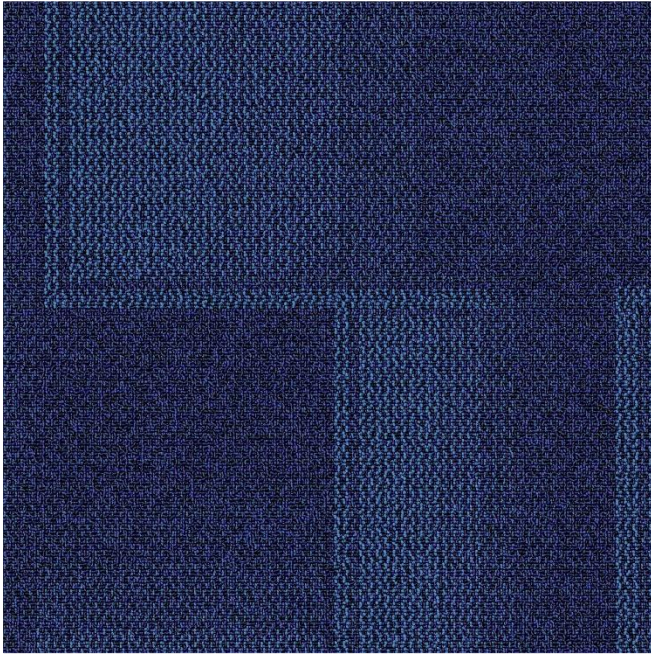
LUXURY



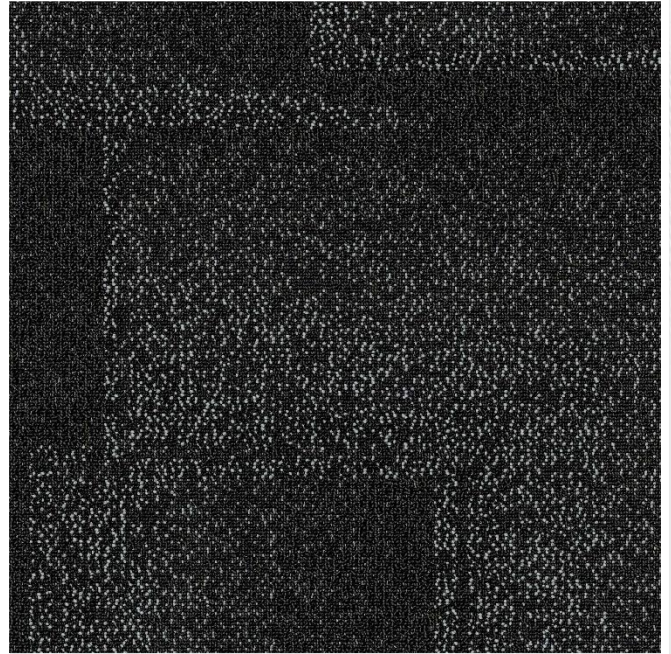
LUXURY

NYLUX
NYLON LUXURY CARPET PLANK

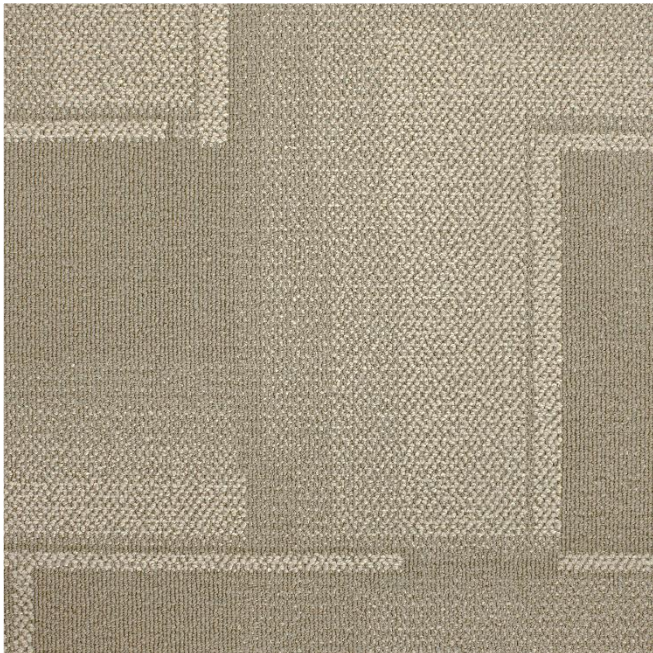
DIMENSION



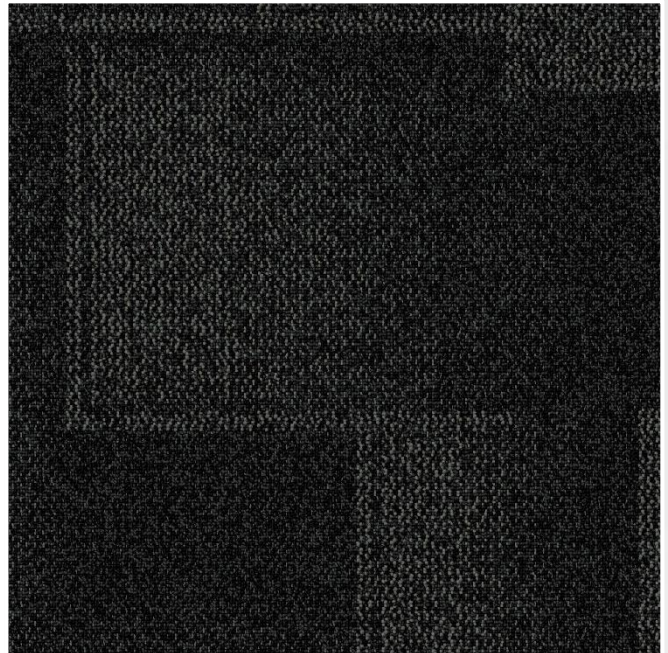
4580 - OCEAN BLUE



4578 - ASH GREY



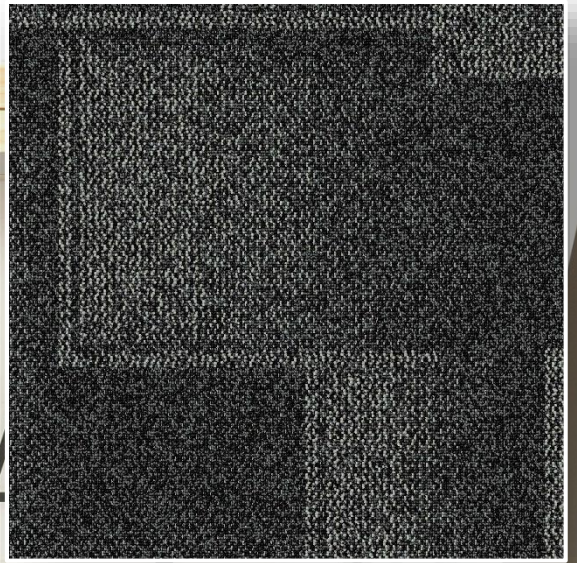
4579 - BEIGE BROWN



4581 - BLACK CARBON

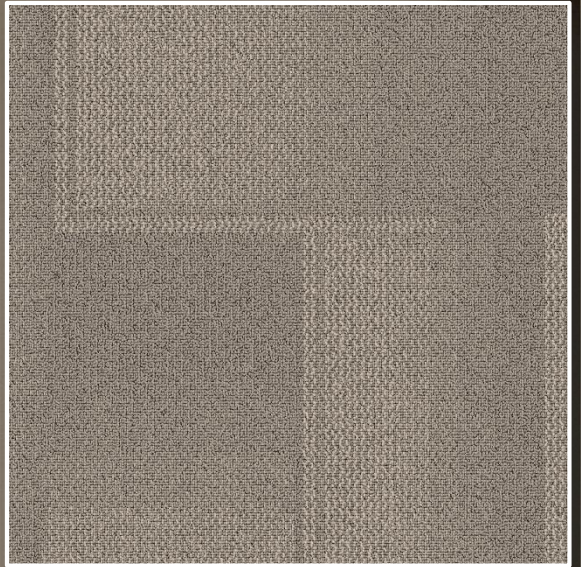


LUXURY



ASH GREY-4578
(DIMENSION)

NYLON



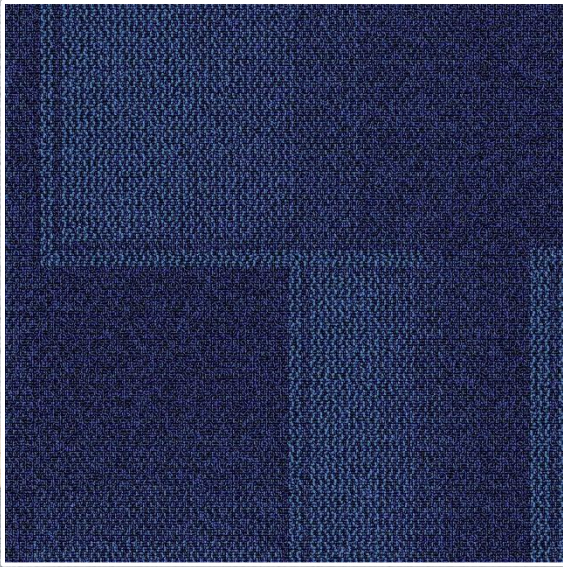
BEIGE BROWN-4579
(DIMENSION)



NYLON

Hego
Quality. Design. Endless.

LUXURY

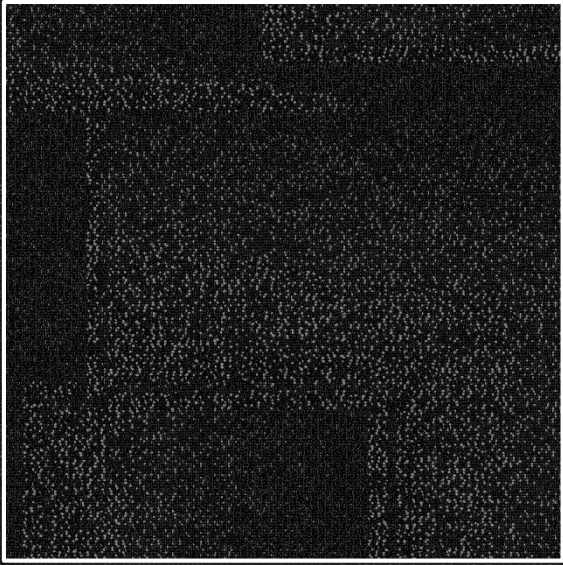


4580 OCEAN BLUE
(DIMENSION)

NYLON



LUXURY



4581 - BLACK CARBON
(DIMENSION)



NYLON

Hego
Quality Flooring Solutions

LUXURY



4578 - ASH GREY &
4581 - BLACK CARBON
(DIMENSION)

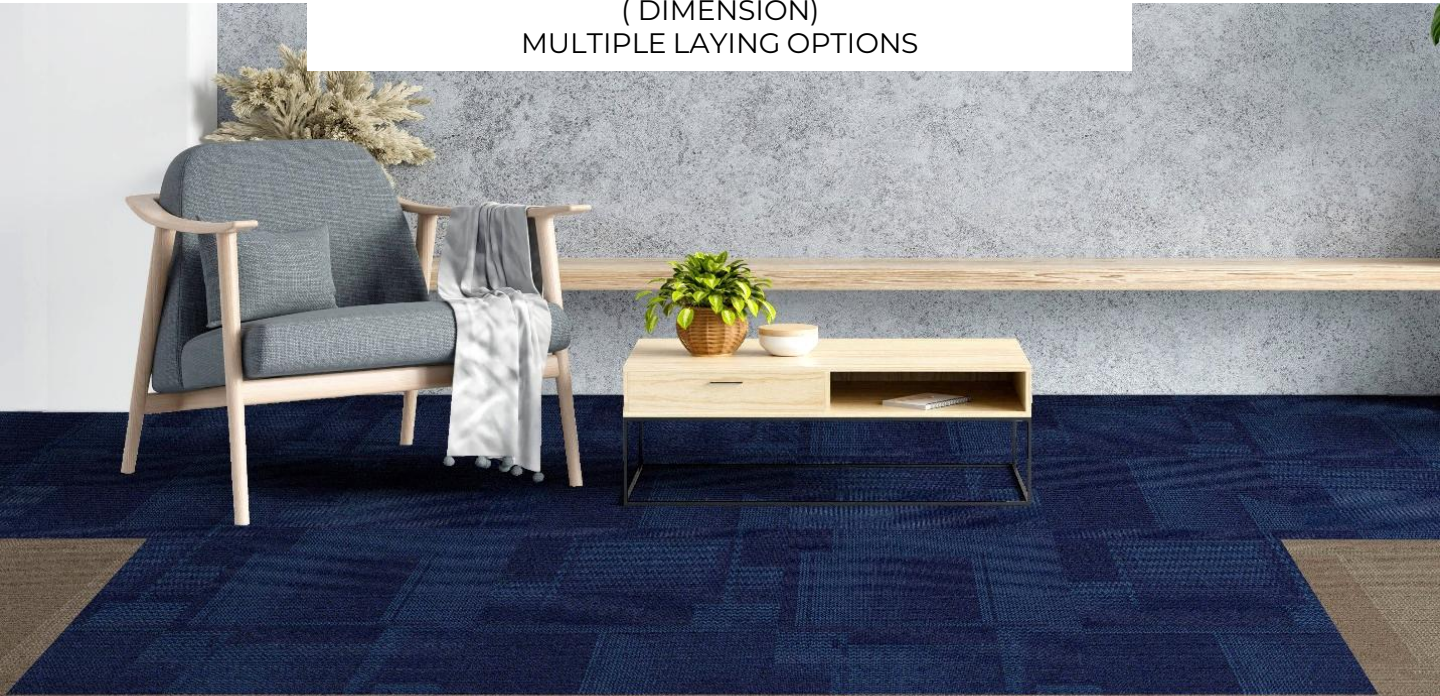
NYLON

Hego
Quality Flooring Solutions

LUXURY



4579 - BEIGE BROWN & 4580 - OCEAN BLUE
(DIMENSION)
MULTIPLE LAYING OPTIONS



NYLON

Hego
Quality Flooring Solutions

LUXURY



4578 - ASH GREY &
4581 - BLACK CARBON



4578 - ASH GREY &
4580 OCEAN BLUE

DIMENSION
MULTIPLE LAYING OPTIONS



4578 - ASH GREY &
4580 OCEAN BLUE



4578 - ASH GREY &
4580 OCEAN BLUE



LUXURY

NYLUX

NYLON LUXURY CARPET PLANK

WHY CARPET TILE?

Carpet tiles are **modular flooring units**, typically square or rectangular, designed for ease of installation, design flexibility, and long-term durability. Carpet tiles give you the freedom to mix, match, and reconfigure — with less waste and fewer limits.

HEGO CARPET TILE SOLUTIONS

Design with Intent. Build with Confidence.

In every great space, the floor is more than a surface — it's part of the experience. HEGO carpet tiles bring architecture, performance, and material integrity together, offering designers a modular flooring solution.

Whether you're drawing up a vibrant open-plan office, a quiet gallery, or a high-impact retail space, HEGO delivers a flooring system that's as smart as the space it's in.

Behind the Tile : The Making of Hego Carpet Tiles

Every HEGO carpet tile begins with premium materials and precision engineering. From yarn selection to final inspection, each step is carefully crafted to ensure durability, performance, and style.

1. High-Performance Yarn

We start with solution-dyed polyamide fibres — known for their exceptional resilience and rich, lasting colour. Because the dye is integrated at the polymer stage.

2. Precision Tufting

The selected yarn is tufted into a primary backing with exacting detail. This process creates the tile's texture, pattern, and pile height — blending design with tactile structure.

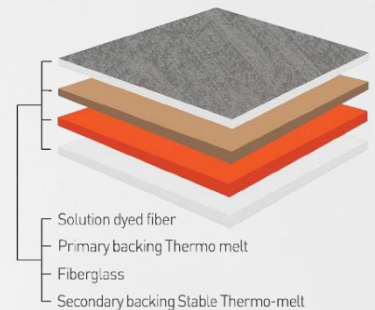
3. Bonding

Multiple engineered backing layers with PVC are thermally bonded to the tufted surface under controlled conditions. This fusion ensures dimensional stability, strength, and a long-lasting foundation.

4. Finishing & Quality Control

Each tile is cut to precise dimensions, maintaining close tolerances for consistent installation.

5. Available in modular formats — 50x50 cm, 25 x 100 cm, offering flexible layout options



WHY CHOOSE HEGO CARPET TILE?

- Long Lasting fibre performance
- Durable, comfort-focused backings
- Low-Maintenance and easy installation
- Environmentally responsible design
- Ideal for commercial , retail and institutional spaces



TECHNICAL SPECIFICATIONS

CONSTRUCTION	MULTI SCROLL LOOP PILE
MATERIAL	100 % NYLON (POLYAMIDE 6)
DYE METHOD	SOLUTION DYED
TUFTING GAUGE	1/10" (ATLAS & NEXUS) / 1/12" (DIMENSION)
PILE WEIGHT	580 GSM +/-8%
TOTAL WEIGHT	4200 GSM +/-8%
PILE HEIGHT	3-3.5 MM +/-5%
TOTAL HEIGHT	5-5.5 MM +/-5%
PRIMARY BACKING	NON WOVEN
SECONDARY BACKING	STABLE SHIELD-100% VINYL (PVC BACKING)
SIZE	50 CM X 50 CM
QUANTITY / BOX	6 SQ. MTR. (24 TILES)
PILE TREATMENT	UV TREATED YARN & SOIL RESISTANCE
RECOMMENDED INSTALLATION	QUARTER TURN OR BRICK

PERFORMANCE CERTIFICATE

WEAR CLASSIFICATION	HEAVY CONTRACT	
VOC (GREEN LABEL PLUS)	ASTM D5116	≤ 0.5 MG/M ³ /CRI GLP
FLAMMABILITY	ASTM D-2859//FF 1-70//16CFR 1630	PASS 8/8
REACTION TO FIRE (CRF)	ASTM E 648 / NFPA 253	CLASS-1 (CRF-0.5 W/CM ²)
SMOKE DENSITY	ASTM E 662 / NFPA 258	DS <450
STATIC PROPENSITY	ISO 6356	0.6 KV
SOIL RESISTANCE	ASTM D6540	4.5/5
COLOR FASTNESS TO LIGHT	AATCC/16.3	5/5 ON GREY SCALE
THERMAL RESISTANCE	ISO 8302	0.02 - 0.1 M ² /KW
SOUND ABSORPTION	ISO 354	α _w : 0,10
IMPACT SOUND INSULATION	ISO 10140 / ISO 717	Δ L _w : 21 dB
DIMENSIONAL STABILITY	ASTM D7570	≤ 0.20%
CASTOR CHAIR TEST	ASTM D6962	2.5-3.5



NOTE:

- SPECIFICATIONS ARE SUBJECT TO CHANGE TO IMPROVE PRODUCT & PERFORMANCE.
- SLIGHT COLOR VARIATION MAY OCCUR FROM DYE LOT TO DYE LOT.
- SLIGHT ROWING COULD BE VISIBLE AND SHOULD NOT BE TREATED AS A MANUFACTURING DEFECT.
- WE RESERVE THE RIGHT TO AMEND THE ABOVE SPECIFICATION WITHOUT COMPROMISING THE PERFORMANCE.
- PRODUCT IMAGES ARE FOR VISUAL PRESENTATION ONLY. PLEASE REFER TO ORIGINAL CATALOGUE FOR ACTUAL COLOURS
- WARRANTY IS SUBJECT TO TERMS & CONDITIONS.

WWW.HEGO.CO.IN

 HEGOINDIA



 HEGOINDIA

 HEGO INDIA



BRAND AMBASSADOR
" ALOK NATH "

HEGO
" YOUR STYLE PARTNER FOR EVERY SPACE "

CORPORATE

Nylon Scroll Carpet Tile Series



HEGO.co.in

Quality Flooring Solutions

NYLON



LUXURY