

KisanKraft[®]

Krushaka Mantram-Krushi Yantram



BIS:ISI
Approved



9001:2015
Certified



FMTTI
Tested



Pan India
Distribution



Spare Parts
Available



Subsidy
Available

Incorporation: 26-August-2005
Employees: ~ 600
Head Office: Bengaluru (KA)
Regional Offices: 14
Factory: Nellore (AP)

Certifications:

- FMTTI (many products)
- BIS:ISI (many products)
- Patents (many)
- Trademarks (many)
- ISO 9001:2015

Memberships:

- All-India Agricultural Machinery Manufacturers' Association (AMMA)
- Indian Society of Agricultural Engineers (ISAE)
- National Seed Association of India (NSAI)
- Confederation of Indian Industry (CII)
- Federation of Indian Chambers of Commerce & Industry (FICCI)
- Federation of Karnataka Chambers of Commerce & Industry (FKCCI)

• **Key snapshots:**

- India's leading company in agricultural machinery, power tools and seeds R&D.
- **Modern factory at Nellore** (Andhra Pradesh, India) spread over 46 acres for manufacturing inter-cultivators, engines and water-pumps. Here we fabricate various machinery components, test machinery, service machinery, perform R&D on machinery and seeds, etc. In addition we have large warehouses for storage of machinery and spare parts and also Infrastructure and accommodation facilities for training mechanics.
- We have many **PATENTS** for improvements in brush-cutter gearbox, oil-palm harvester gearbox design, paddy reaper and inter-cultivators. More patents are under process.
- 5,000+ dealers across every state in India.
- DSIR recognized R&D centre to develop water-saving, fortified, organic (non-GMO), drought resistant varieties & hybrid seeds for various crops/vegetables and staffed with highly qualified researchers.
- NBA approval for seeds R&D and commercialization of various crops.
- ACUITE BBB+ (Stable) rating by ACUITE, a RBI accredited, External Credit Assessment Institution (ECAI).
- SMERA MSE 1 rating by SMERA-D&B-NSIC Micro & Small Enterprises Rating.

KisanKraft		Chaff Cutter	25
Inter-Cultivators/Power Weeders	10 - 12	Milking Machine	26
Blades	12	Lawn Mowers	26
Inter-cultivator Accessories	12	Garden Tools	27
Electric Motors	13	FarmBoy	
Engines	13	Inter-Cultivators	29
Water Pumps	13-14	Water Pumps & Engines	29
Electric Water Pumps	15	Knapsack & Portable Power Sprayers	29
Knapsack Power Sprayers	16	Brush Cutters	29
Knapsack Battery/Manual Sprayers	16	Tea Leaf Harvester	29
HTP Sprayers	17	Aryantra - Power Tools	
HTP Sprayer Set	18	Angle Grinders	31
Sprayer Accessories	18	Mixture Drill	31
Portable Power Sprayers	19	Concrete Vibrator & Accessories	31
Orchard Sprayers	19	Marble Cutters	32
Seeders	20	Circular Saw	32
Self Propelled Reapers	20	Electric Jig Saw	32
Stubble Mower	20	Planner	32
Maize/Corn Harvester	21	Electric Router	32
Maize Sheller	21	Screw Driver	32
Maize Dehusker	21	Cordless Drill	32
Rice Mill	21	Heat Gun & Spray Gun	32
Tea Leaf Harvesters	21-22	Wall Chaser	33
Hedge Trimmers	22	Electric Blowers & Vacuums	33
Leaf Blowers	22	Vacuum Cleaners	33
Tea Pruner	22	Air Compressors	33
Brush Cutters	22-23	Impact Drills	34
Palm Harvester	24	Rotary Hammers	34
Brush Cutter Accessories	24	Cut-off Machines	34
Paddy Weeders	24	Demolition Hammers	35
Hoe Cutters	24	Arc Welding Machines	35
Post Hole Diggers	25	Portable Pressure Wash Sprayers	36
Auger Bits	25	Chainsaws	37
Fogging Sprayers	25	Accessories	38

भारतीय मानक ब्यूरो
BUREAU OF INDIAN STANDARDS
Bangalore Branch Office

Address: Penta Industrial Area, Stage, Bangalore-Tumkur Road, Bangalore-560018
Phone: 080-2839495, 2839496
Fax: 080-2839841
E-Mail: info@bis.org.in
http://www.bis.org.in

Our Ref.:BNBO /I.-620003493 Dated: 08 Feb 2016

M/S KISAN KRAFT MACHINE TOOLS PRIVATE LIMITED
SRI HUCHANNA TOWER NO.4 1ST MAIN 7-A CROSS, MARUTHI LAYOUT, DASARAHALLI, HAF POST, HEBBAL, BANGALORE
Distt.: Bangalore Urban
Karnataka
560024

Dear Sir,

This has reference to BIS Certification Marks Licence No. CML/I.-620003493 held by you for Specification for Performance of Small Size Spark Ignition Engines as per IS 7347: 1974 which is valid upto 01/11/2016.

We are pleased to inform you that it has been agreed to include the following variety in your licence with immediate effect:

Specification for Performance of Small Size Spark Ignition Engines as per the following ratings:

- a) Petrol Start and Kerosene Start
- b) Rated Power- 2.6kW
- c) Rated Speed-3600 rpm
- d) Stroke- 4 Stroke
- e) Fuel Consumption- 1176 g/h
- f) Specific Fuel consumption- 299g/kWh
- g) Grade of Lubrication OI-SAE 20W 40
- h) Lubrication Oil consumption- 5.007 l/h
- i) Type of Cooling- Forced Air Cooling
- j) Model: KE-GE-200
- k) Governing Class 2
- l) No of Cylinders-Single

Please inform us as and when you start marking the new variety. You are advised to maintain separate records for the above variety after testing the same as per STI.

Endorsement sheet No.1 for the above is enclosed.

Thanking You,

Yours faithfully,
M. Anand
(ARUL SATHYA M)
Scientist-B

भारतीय मानक ब्यूरो
BUREAU OF INDIAN STANDARDS
Bangalore Branch Office

Address: Penta Industrial Area, Stage, Bangalore-Tumkur Road, Bangalore-560018
Phone: 080-2839495, 2839496
Fax: 080-2839841
E-Mail: info@bis.org.in
http://www.bis.org.in

Our Ref.:BNBO /I.-620003493 Dated: 20/11/2016

M/S KISAN KRAFT MACHINE TOOLS PRIVATE LIMITED
SRI HUCHANNA TOWER NO.4 1ST MAIN 7-A CROSS, MARUTHI LAYOUT, DASARAHALLI, HAF POST, HEBBAL, BANGALORE
Distt.: Bangalore Urban
Karnataka
560024

Dear Sir(s),

This has reference to BIS Certification Marks Licence No. CML/I.-620003493 held by you for Specification for Performance of Small Size Spark Ignition Engines as per IS 7347: 1974 which is valid upto 01/11/2017.

We are pleased to inform you that the Competent Authority of Bureau has agreed to include the following variety in your licence with immediate effect:

Specification for Performance of Small Size Spark Ignition Engines as per the following ratings:

Inclusion may be permitted for small size spark ignition engine of a) Petrol Start kerosene Run, b) Rated Power: 2.6kW, c) Rated Speed: 3600rpm, d) Stroke: Four c) Specific Fuel Consumption: 1020 g/kWh h) Lubrication Oil Consumption: 5.007 l/h type of cooling - forced Air cooling cylinder one.

Please inform us as and when you start marking the new variety. You are advised to maintain separate records for the above variety after testing the same as per STI.

Endorsement sheet for the above is enclosed / will be sent in due course.

Thanking You,

Yours faithfully,
(BEAUTY KUMARI JHA)
Scientist-C

भारतीय मानक ब्यूरो
BUREAU OF INDIAN STANDARDS
Bangalore Branch Office

Address: Penta Industrial Area, Stage, Bangalore-Tumkur Road, Bangalore-560018
Phone: 080-2839495, 2839496
Fax: 080-2839841
E-Mail: info@bis.org.in
http://www.bis.org.in

Our Ref.:BNBO /I.-620003493 Dated: 10/11/2017

M/S KISAN KRAFT MACHINE TOOLS PRIVATE LIMITED
SRI HUCHANNA TOWER NO.4 1ST MAIN 7-A CROSS, MARUTHI LAYOUT, DASARAHALLI, HAF POST, HEBBAL, BANGALORE
Distt.: Bangalore Urban
Karnataka
560024

Dear Sir(s),

This has reference to BIS Certification Marks Licence No. CML/I.-620003493 held by you for Specification for Performance of Small Size Spark Ignition Engines as per IS 7347: 1974 which is valid upto 01/11/2017.

We are pleased to inform you that the Competent Authority of Bureau has agreed to include the following variety in your licence with immediate effect:

Specification for Performance of Small Size Spark Ignition Engines as per the following ratings:

Spark Ignition engine, Model no: KK-PE4-303, Rating: 3.0 kw, Governing class 2, Speed: 3600 RPM, No. of cylinder: One, Fuel type: Petrol, Efficiency: 75%, Lubricant grade: SAE 20W 40, Stroke: 4, Specific fuel consumption: 540 g/kWh, Lab. Oil consumption: 0.01 l/h, Type of cooling: Forced air cooled.

Please inform us as and when you start marking the new variety. You are advised to maintain separate records for the above variety after testing the same as per STI.

Endorsement sheet for the above is enclosed / will be sent in due course.

Thanking You,

Yours faithfully,
(BEAUTY KUMARI JHA)
Scientist-C

भारतीय मानक ब्यूरो
BUREAU OF INDIAN STANDARDS
Bangalore Branch Office

Address: Penta Industrial Area, Stage, Bangalore-Tumkur Road, Bangalore-560018
Phone: 080-2839495, 2839496
Fax: 080-2839841
E-Mail: info@bis.org.in
http://www.bis.org.in

Our Ref.:BNBO /I.-620003493 Dated: 14/3/2017

M/S KISAN KRAFT MACHINE TOOLS PRIVATE LIMITED
SRI HUCHANNA TOWER NO.4 1ST MAIN 7-A CROSS, MARUTHI LAYOUT, DASARAHALLI, HAF POST, HEBBAL, BANGALORE
Distt.: Bangalore Urban
Karnataka
560024

Dear Sir(s),

This has reference to BIS Certification Marks Licence No. CML/I.-620003493 held by you for Specification for Performance of Small Size Spark Ignition Engines as per IS 7347: 1974 which is valid upto 01/11/2017.

We are pleased to inform you that the following variety has been included in your licence with immediate effect:

Specification for Performance of Small Size Spark Ignition Engines as per the following ratings:

Petrol Engine, Model No: KK-PE4-163, Rating: 2.3 kw, Governing class 2, Speed: 3600 RPM, No. of cylinder: one, Fuel type: Petrol, Lubrication grade: SAE 20W40, Specific fuel consumption: 450 g/kWh, Lab. Oil consumption: 0.01 l/h, Efficiency: 75%, Stroke:4, Type of cooling: Forced Air cooling.

Please inform us as and when you start marking the new variety. You are advised to maintain separate records for the above variety after testing the same as per STI.

Endorsement sheet for the above is enclosed / will be sent in due course.

Thanking You,

Yours faithfully,
(BEAUTY KUMARI JHA)
Scientist-C

भारतीय मानक ब्यूरो
BUREAU OF INDIAN STANDARDS
Bangalore Branch Office

Address: Penta Industrial Area, Stage, Bangalore-Tumkur Road, Bangalore-560018
Phone: 080-2839495, 2839496
Fax: 080-2839841
E-Mail: info@bis.org.in
http://www.bis.org.in

Our Ref.:CM/I-620008906 Dated: 19/6/17

M/S KISAN KRAFT MACHINE TOOLS PRIVATE LIMITED
SRI HUCHANNA TOWER NO.4 1ST MAIN 7-A CROSS, MARUTHI LAYOUT, DASARAHALLI, HAF POST, HEBBAL, BANGALORE
Distt.: Bangalore Urban
Karnataka
560024

Dear Sir,

With reference to your application, we are pleased to inform you that it has been decided to grant you a licence to use the Standard Mark in respect of the following:

Product: Spark Ignition Engine Monomet Centrifugal Pump of Self Priming type for Handling Clear, Cold Water for Agricultural Purposes
IS No: IS 11501:1986

Type/Model/Variety covered under licence:
Model No. KK-WPK-20, Engine-Petrol Start Kerosene Run four stroke overhead valve type, rating = 2.5 KW, Speed 3600 rpm, Section Size - 80mm, Delivery Size - 80mm, Head - 26m, Discharge - 8.5 lps, Fuel Consumption - 1200 g/h, Declared Head Range - 18 to 25 m, Declared Discharge Range - 4 to 11 lps only.

2. The number assigned to this licence is CM/I-620008906 which has been made operative from 08/06/2017 and will be valid upto 01/06/2021. The licence number should invariably be referred to in your future correspondence.

3. According to sub-regulation (2) of Regulation 4 of Bureau of Indian Standards (Certification) Regulation, 2008, the licence fee of Rs. 2000/- and the marking fee of Rs. 27,000/- as stipulated in the Second Schedule of this licence is payable by you with effect from 18/05/2017 for the period of validity of the licence. Section 4 (b) (3) is applicable shall also be charged.

4. The licence marking fee stipulated therein is payable by you regardless of the whether you actually mark your product or not within the time of renewal.

5. This advance minimum marking fee will be carried over to the next year on every renewal. The actual marking fee calculated on the unit rate on the production marked or the minimum marking fee, whichever is higher shall be payable by you at the time of renewal.

6. With a view to ensuring the reporting of quantity marked, calculation and collection of marking fee on the unit rate basis, fee will be calculated on the production marked during the first nine months of operation of the licence at the time of first renewal and the production marked during twelve months comprising the last three months of the previous operation year, at the time of second and subsequent renewals. In case the licence expires, the entire production marked till the expiry date shall be taken into account for calculating the marking fee payable.

Other terms and conditions of Licence remain the same.

Yours faithfully,
(JESSY BENNY)
Scientist-E & Head

भारतीय मानक ब्यूरो
BUREAU OF INDIAN STANDARDS
Bangalore Branch Office

Address: Penta Industrial Area, Stage, Bangalore-Tumkur Road, Bangalore-560018
Phone: 080-2839495, 2839496
Fax: 080-2839841
E-Mail: info@bis.org.in
http://www.bis.org.in

Our Ref.:CM/I-620008906 Dated: 14 SEP 2017

M/S KISAN KRAFT MACHINE TOOLS PRIVATE LIMITED
SRI HUCHANNA TOWER NO.4 1ST MAIN 7-A CROSS, MARUTHI LAYOUT, DASARAHALLI, HAF POST, HEBBAL, BANGALORE
Distt.: Bangalore Urban
Karnataka
560024

Dear Sir,

The following additional variety have been included in Column (2) of the first schedule and column (1) of the Second Schedule of the Licence along with the Standard Mark in Column (1) of First Schedule with immediate effect.

Model No - KK-WPK-20, Engine -Petrol Start Kerosene run, four stroke overhead valve type, rating - 2.4 KW, Speed - 3600 rpm, Section size - 50 mm, Delivery size - 50 mm, Head - 23.5 m, Discharge - 5.1 lps, Fuel consumption - 1540 g/h, Declared Head range - 18 to 25 m, Discharge Range - 5 to 9 lps

Other terms and conditions of Licence remain the same.

Yours faithfully,
(JESSY BENNY)
Scientist-E & Head

भारतीय मानक ब्यूरो
BUREAU OF INDIAN STANDARDS
Bengaluru Branch Office

Address: Penta Industrial Area, Stage, Bangalore-Tumkur Road, Bangalore-560018
Phone: 080-2839495, 2839496
Fax: 080-2839841
E-Mail: info@bis.org.in
http://www.bis.org.in

Our Ref.:CM/I-620008906 Dated: 4 DEC 2017

M/S KISAN KRAFT MACHINE TOOLS PRIVATE LIMITED
SRI HUCHANNA TOWER NO.4 1ST MAIN 7-A CROSS, MARUTHI LAYOUT, DASARAHALLI, HAF POST, HEBBAL, BANGALORE
Distt.: Bangalore Urban
Karnataka
560024

Dear Sir,

The following additional variety have been included in Column (2) of the first schedule and column (1) of the Second Schedule of the Licence along with the Standard Mark, in Column (1) of First Schedule with immediate effect.

Model No - KK-WPK-20, Engine -Petrol, four stroke overhead valve type, rating - 2.3 KW, Speed - 3600 rpm, Section size - 80 mm, Delivery size - 80 mm, Head - 18.00 m, Discharge - 8.5 lps, Fuel consumption - 1200 g/h, Declared Head range - 12 to 25 m, Discharge Range - 8.5 to 12 lps

Other terms and conditions of Licence remain the same.

Yours faithfully,
(JESSY BENNY)
Scientist-E & Head

भारतीय मानक ब्यूरो
BUREAU OF INDIAN STANDARDS
Bengaluru Branch Office

Address: Penta Industrial Area, Stage, Bangalore-Tumkur Road, Bangalore-560018
Phone: 080-2839495, 2839496
Fax: 080-2839841
E-Mail: info@bis.org.in
http://www.bis.org.in

Our Ref.:CM/I-620008906 Dated: 16 JAN 2019

M/S KISAN KRAFT MACHINE TOOLS PRIVATE LIMITED
SRI HUCHANNA TOWER NO.4 1ST MAIN 7-A CROSS, MARUTHI LAYOUT, DASARAHALLI, HAF POST, HEBBAL, BANGALORE
Distt.: Bangalore Urban
Karnataka
560024

Dear Sir,

The following addition in the scope of licence has been approved and included in Column (2) of the First Schedule and Column (1) of the Second Schedule of the Licence with immediate effect.

Compression Ignition Engine Monomet -Diesel Engine - Model No - KK-WPK-178, Four stroke overhead valve type, Self Priming type, rating - 4.8 KW, Speed - 3600 rpm, Section size - 80 mm, Delivery size - 80 mm, Head - 20.0 m, Discharge - 8 lps, Fuel consumption - 132 g/h, Declared Head range - 7.5 to 20 m, Declared Discharge range - 7.5 to 9 lps

Other terms and conditions of Licence remain the same.

Yours faithfully,
(JESSY BENNY)
Scientist-E & Head

भारतीय मानक ब्यूरो
BUREAU OF INDIAN STANDARDS
Bengaluru Branch Office

Address: Penta Industrial Area, Stage, Bangalore-Tumkur Road, Bangalore-560018
Phone: 080-2839495, 2839496
Fax: 080-2839841
E-Mail: info@bis.org.in
http://www.bis.org.in

Our Ref.:CM/I-620008906 Dated: 6/12/18

M/S KISAN KRAFT MACHINE TOOLS PRIVATE LIMITED
SRI HUCHANNA TOWER NO.4 1ST MAIN 7-A CROSS, MARUTHI LAYOUT, DASARAHALLI, HAF POST, HEBBAL, BANGALORE
Distt.: Bangalore Urban
Karnataka
560024

Dear Sir,

With reference to your application, we are pleased to inform you that it has been decided to grant you a licence to use the Standard Mark in respect of the following:

Product: Performance Requirements for Constant Speed Compression Ignition (Diesel) Engine for Agricultural Purposes IS No: IS 11179:1986

Type/Model/Variety covered under licence:

Sl. No.	Model	Rated Power (KW)	Speed (RPM)	SEC (g/kWh)	Type	Governing Class	Lubrication Oil Consumption (l/h)
1	KK-DEV-750	4	3600	300	Direct Injection, Air Cooled	Class B1	0.03
2	KK-DEV-1200	5.2	3000	300	Direct Injection, Air Cooled	Class B1	0.03

2. The licence is being granted with the explicit condition that you will mark emblematic production which conforms to the Indian Standards referred above.

3. The number assigned to this licence is CM/I - 620008906 which has been made operative from 19/03/2019 and is valid upto 18/03/2021. The licence number should invariably be referred to in your future correspondence.

4. According to sub-regulation (2) of Regulation 4 of Bureau of Indian Standards (Certification) Regulation, 1988, the licence fee of Rs. 1000/- and the marking fee of Rs. 17000/- as stipulated in the Second Schedule of this licence is payable by you with effect from 19/03/2019 for the period of validity of the licence. Section 4 (b) (3) is applicable shall also be charged.

5. This advance minimum marking fee will be carried over to the next year on every renewal. The actual marking fee calculated on the unit rate on the production marked or the minimum marking fee, whichever is higher shall be payable by you at the time of renewal.

6. With a view to ensuring the reporting of quantity marked, calculation and collection of marking fee on the unit rate basis, fee will be calculated on the production marked during the first nine months of operation of the licence at the time of first renewal and the production marked during twelve months comprising the last three months of the previous operation year, at the time of second and subsequent renewals. In case the licence expires, the entire production marked till the expiry date shall be taken into account for calculating the marking fee payable.

Other terms and conditions of Licence remain the same.

Yours faithfully,
(JESSY BENNY)
Scientist-E & Head

KisanKraft®

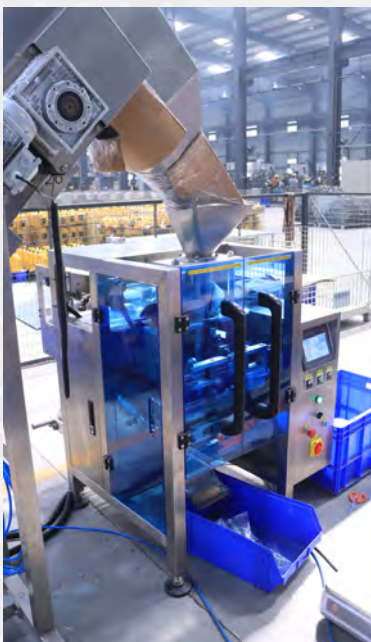
MANUFACTURING UNIT (Nellore, Andhra Pradesh)



DISCLAIMER:

Pictures used are for illustration purpose only. Product specifications are subject to change without prior notice. Performance of machine may vary with User/field/Working conditions.

MANUFACTURING UNIT (Nellore, Andhra Pradesh)

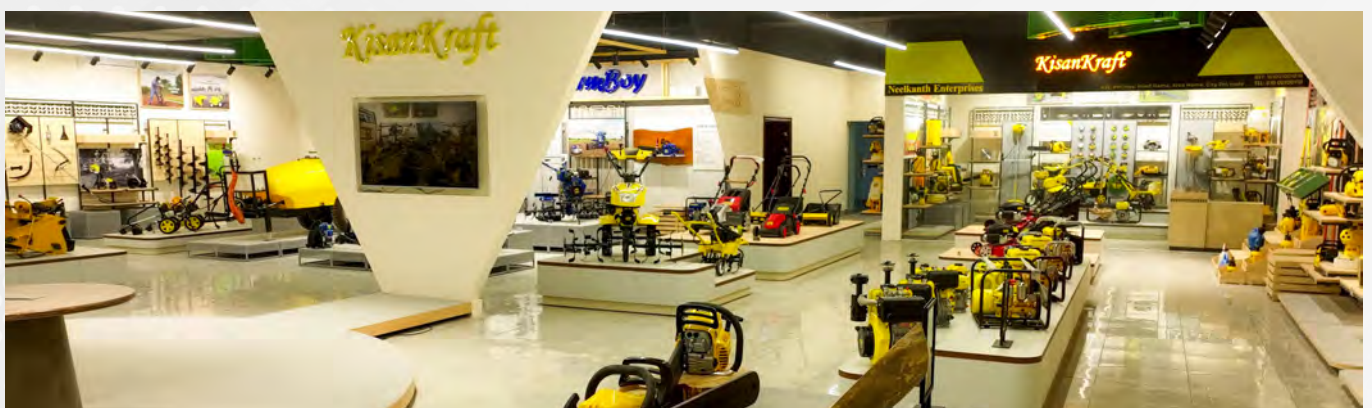


DISCLAIMER:

Pictures used are for illustration purpose only. Product specifications are subject to change without prior notice. Performance of machine may vary with User/field/Working conditions.

KisanKraft®

EXPERIENCE CENTER (Nellore, Andhra Pradesh)



DISCLAIMER:

Pictures used are for illustration purpose only. Product specifications are subject to change without prior notice. Performance of machine may vary with User/field/Working conditions.

KisanKraft®

EXPERIENCE CENTER (Nellore, Andhra Pradesh)



DISCLAIMER:

Pictures used are for illustration purpose only. Product specifications are subject to change without prior notice. Performance of machine may vary with User/field/Working conditions.

KisanKraft®

R&D SEEDS

(Nellore, Andhra Pradesh)



DISCLAIMER:

Pictures used are for illustration purpose only. Product specifications are subject to change without prior notice. Performance of machine may vary with User/field/Working conditions.

PETROL



KK-IC-8626 FMTTI

Rated Power: 1.14 kW (1.52 hp)
 Displacement: 43 cc
 Speed: 6250 RPM
 SFC (Max): 610g/kw.h
 Number of Gears: 1 Fwd
 Cultivation Width: 25.0-30.0 cm
 Cultivation Depth: 2.0-2.7 cm
 Engine/Fuel: 2-Stroke/Petrol
 Fuel Tank Capacity: 1 L
 Fuel Consumption: 0.80 L/hr



KK-IC-520

Rated Power: 1.47 kW (1.97 hp)
 Displacement: 52 cc; Speed: 6500 RPM
 SFC (Max): 680g/kwh
 Number of Gears: 1 Fwd
 Cultivation Width: 300 mm
 Cultivation Depth: >50 mm
 Engine/Fuel: 2-Stroke/Petrol
 Fuel Tank Capacity: 1 L



KK-IC-6320

Rated Power: 1.95 kW (2.61 hp)
 Displacement: 62 cc; Speed: 9000 RPM
 SFC (Max): 586g/Kw.h
 Number of Gears: 1 Fwd
 Cultivation Width: 300 - 350 mm
 Cultivation Depth: ≥50 mm
 Engine/Fuel: 2-Stroke/Petrol
 Fuel Tank Capacity: 1.2 L



KK-IC-100P

Rated Power: 1.4 kW (1.88 hp)
 Displacement: 98.5 cc
 Speed: 3100 RPM (Eng), 143 RPM (Rota)
 SFC (Max): 550g/kWh
 Number of Gears: 1 Fwd
 Cultivation Width: 42 cm
 Cultivation Depth: 5-6 cm
 Engine/Fuel: 4-Stroke/Petrol
 Fuel Tank Capacity: 1.6 L
 Fuel Consumption: 380 ml/hr



KK-IC-200P FMTTI

Rated Power: 3.8 kW (5 hp)
 Displacement: 196 cc
 Speed: 3600 RPM(Eng), 800 RPM(Rota)
 SFC (Max): ≤374g/kWh
 Number of Gears: 2 Fwd, 1 Rev
 Cultivation Width: 73.4-73.8 cm
 Cultivation Depth: 5.1-5.4 cm
 Engine/Fuel: 4-Stroke/Petrol
 Fuel Tank Capacity: 3.0 L
 Fuel Consumption: 0.95 L/hr



KK-IC-205P FMTTI

Max Power: 3.8 kW (5 hp)
 Displacement: 196 cc; Speed: 3400 RPM
 SFC (Max): ≤374g/kWh
 Number of Gears: 2 Fwd, 1 Rev
 Cultivation Width: 85-86 cm
 Cultivation Depth: 6.6-7.0 cm
 Engine/Fuel: 4-Stroke/Petrol
 Fuel Tank Capacity: 3.6 L
 Fuel Consumption: 0.90 L/hr



KK-IC-208P FMTTI

Rated Power: 3.8 kW (5 hp)
 Displacement: 208 cc; Speed: 3600 RPM(Eng)
 SFC (Max): ≤374g/kWh
 Number of Gears: 2 Fwd, 1 Rev
 Cultivation Width: 93.9 to 94.2 cm
 Cultivation Depth: 7.9 to 8.4 cm
 Engine/Fuel: 4-Stroke/Petrol
 Fuel Tank Capacity: 3.6 L
 Fuel Consumption: 0.95 L/h



KK-IC-210P

Rated Power: 4.2 kW (5.63 hp)
 Displacement: 208 cc
 Engine Speed: 3600 RPM
 SFC (Max): ≤374g/kWh
 Engine: 4-Stroke, Petrol Engine
 Cultivation Width: 750 mm
 Cultivation Depth: ≥100 mm
 Fuel Tank: 3.6 L



KK-IC-212P

Rated Power: 5.22 kW (7 hp)
 Displacement: 212 cc; Speed: 3600 RPM
 SFC (Max): ≤374g/kWh
 Number of Gears: 2 Fwd, 1 Rev
 Cultivation Width: 800 mm
 Cultivation Depth: >100 mm
 Engine/Fuel: 4-Stroke/Petrol
 Fuel Tank Capacity: 3.6 L

PETROL



KK-IC-215P

Rated Power: 5.22 kW (7 hp)
 Displacement: 212 cc, Speed: 3600 RPM
 SFC (Max): 420g/kwh
 Number of Gears: 2 Fwd, 1 Rev
 Cultivation Width: 1050 mm
 Cultivation Depth: ≥150 mm
 Engine/Fuel: 4-Stroke/Petrol
 Fuel Tank Capacity: 4 L



KK-IC-410P

Rated Power: 5.8 kW (7.8 hp)
 Displacement: 270 cc, Speed: 3600 RPM
 SFC (Max): 420g/kwh
 Number of Gears: 2 Fwd, 1 Rev
 Cultivation Width: 1350 mm
 Cultivation Depth: 150 mm
 Engine/Fuel: 4-Stroke/Petrol
 Fuel Tank Capacity: 6 L
 Fuel Consumption: 0.6 L/hr



KK-IC-620P

Rated Power: 5.22 kW (7 hp)
 Displacement: 212 cc, Speed: 3600 RPM
 SFC (Max): 420g/kwh
 Number of Gears: 2 Fwd, 1 Rev
 Cultivation Width: 62 cm
 Cultivation Depth: 10-20 cm
 Engine/Fuel: 4-Stroke/Petrol
 Fuel Tank Capacity: 4 L
 Fuel Consumption: 395g/kw.h

DIESEL



KK-IC-250D **FMTTI**

Rated Power: 2.26 kW (3 hp)
 Displacement: 247 cc
 Speed: 3600 RPM
 SFC (Max): 330g/kwh
 Number of Gears: 2 Fwd, 1 Rev
 Cultivation Width: 0.875 to 0.90 m
 Cultivation Depth: 5.5 to 6.33 cm
 Engine/Fuel: 4-Stroke/Diesel
 Fuel Tank Capacity: 2.35 L
 Fuel Consumption: 0.590 L/hr



KK-IC-255D

Rated Power: 3.73 kW (5 hp)
 Displacement: 247 cc
 Speed: 3600 RPM
 SFC (Max): 330g/kwh
 Number of Gears: 2 Fwd (High & Low),
 1 Rev (High & Low)
 Cultivation Width: 0.614 to 0.627 m
 Cultivation Depth: 4.16 to 5.64 cm
 Engine/Fuel: 4-Stroke/Diesel
 Fuel Tank Capacity: 2.35 L
 Fuel Consumption: 0.657 L/hr



KK-IC-256D **FMTTI**

Rated Power: 4.0 kW (5.36 hp)
 Displacement: 247 cc
 Speed: 3600 RPM
 SFC (Max): 330g/kwh
 Number of Gears: 2 Fwd (High & Low)
 1 Rev (High & Low)
 Cultivation Width: 0.614 to 0.627 m
 Cultivation Depth: 4.16 to 5.64 cm
 Engine/Fuel: 4-Stroke/Diesel
 Fuel Tank Capacity: 2.35 L
 Fuel Consumption: 0.657 L/hr



KK-IC-300D **FMTTI**

Standard Rotating Tines
 Rated Power: 4.3 kW (5.76 hp)
 Displacement: 296 cc, Speed: 3600 RPM
 SFC (Max): 310g/kwh
 Number of Gears: 2 Fwd, 1 Rev
 Cultivation Width: 117-118cm
 Cultivation Depth: 6.0-6.2cm
 Engine/Fuel: 4-Stroke/Diesel
 Fuel Tank Capacity: 3.5 L
 Fuel Consumption: 0.809 L/hr



KK-IC-350D **FMTTI**

Ditcher Function
 Rated Power: 4.3 kW (5.76)
 Displacement: 296 cc, Speed: 1800 RPM (Eng)
 SFC (Max): 310g/kwh
 Number of Gears: 2 Fwd (H/L), 2 Rev (H/L)
 Cultivation Width: 59.8 - 60.2 cm
 Cultivation Depth: 4.1 - 5.30 cm
 Engine/Fuel: 4-Stroke/Diesel
 Fuel Tank Capacity: 3.5 L
 Fuel Consumption: 0.65 L/hr



KK-IC-650D

Rated Power: 4 kW (5.36 hp)
 Displacement: 296 cc
 Speed: 3600 RPM
 SFC (Max): 310g/kwh
 Number of Gears: 2 Fwd, 1 Rev
 Cultivation Width: 66 cm
 Cultivation Depth: ≥10 cm
 Engine/Fuel: 4-Stroke/Diesel
 Fuel Tank Capacity: 3.5 L
 Fuel Consumption: 280g/kw.h

DISCLAIMER:

Pictures used are for illustration purpose only. Product specifications are subject to change without prior notice. Performance of machine may vary with User/field/Working conditions.

DIESEL



KK-IC-400D **FMTTI**

Rated Power: 6.1 kW (8.1 hp)
Displacement: 418 cc
Speed: 3680 RPM(Eng), 800 RPM(Rota)
SFC (Max): 290g/kwh
Cultivation Width: 148-149 cm
Cultivation Depth: 6.8-7.0 cm
Engine/Fuel: 4-Stroke/Diesel
Number of Gears: 2 Fwd, 1 Rev
Fuel Tank Capacity: 4.9L
Fuel Consumption: 0.860 L/hr



KK-IC-400E (Electric Start)

Rated Power: 5.81 kW (7.8 hp)
Displacement: 418 cc
Speed: 3600 RPM(Eng), 800 RPM(Rota)
SFC (Max): 290g/kwh
Cultivation Width: 148-149 cm
Cultivation Depth: 7.5-9.7 cm
Engine/Fuel: 4-Stroke/Diesel
Number of Gears: 2 Fwd, 1 Rev
Fuel Tank Capacity: 5.0 L
Fuel Consumption: 0.86 L/hr



KK-IC-750RT

Rated Power: 5.82 kW (7.8 hp)
Displacement: 418.6 cc
Speed: 3600 RPM
SFC (Max): ≤230g.kw/h
Engine: 4-Stroke
Fuel: Diesel Engine
Number of Gears: 2 Fwd, 1 Rev
Cultivation Width: 90 cm
Cultivation Depth: 6-9 cm
Fuel Tank Capacity: 5.0 L



KK-IC-406D **FMTTI**

Max Power: 5.5 kW (7.5 hp)
Displacement: 418 cc, Speed: 3500 RPM (Eng)
SFC (Max): 290g/kwh
Number of Gears: 4 Fwd (H/L), 2 Rev (H/L)
Cultivation Width: 43.7-44.0 cm
Cultivation Depth: 9.0-9.4 cm
Engine/Fuel: 4-Stroke/Diesel
Fuel Tank Capacity: 5.0 L
Fuel Consumption: 0.78 L/hr



KK-IC-406D (Electric Start)

Max Power: 5.5 kW (7.5 hp)
Displacement: 418 cc, Speed: 3500 RPM (Eng)
SFC (Max): 290g/kwh
Number of Gears: 2 Fwd, 1 Rev (H/L)
Cultivation Width: 1350 mm
Cultivation Depth: 90-94 mm
Engine/Fuel: 4-Stroke/Diesel
Fuel Tank Capacity: 5 L
Fuel Consumption: 0.78 L/hr"



BLADES - INTER-CULTIVATOR/ROTAVATOR



KK-IC-102-700-04

Machine: KK-IC-200P
Name: Dry Land(Right+Left)
Hole Distance: 70 mm
Hole Size: 10.20 mm
Thickness: 4 mm



KK-IC-110-700-06

Machine: KK-IC-200P/300/400D
Name: Wet Land(Right+Left)
Hole Distance: 70 mm
Hole Size: 11 mm
Thickness: 6 mm



KK-IC-115-700-06

Machine: KK-IC-300/400D
Name: Dry Land(Right+Left)
Hole Distance: 70 mm
Hole Size: 11.50 mm
Thickness: 6 mm



KK-IC-110-001-06

Machine: KK-IC-910D
Name: Dry Standard (Right+Left)
Hole Distance: N/A
Hole Size: 11 mm
Thickness: 6 mm



KK-IC-110-002-06

Machine: KK-IC-910D
Name: Bend (Right+Left)
Hole Distance: N/A
Hole Size: 11 mm
Thickness: 6 mm

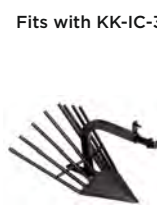
INTER-CULTIVATOR ACCESSORIES



Potato Harvester



Row Hiller



Potato Digger



Ridger



Plough



Puddling Wheel

Fits with KK-IC-300D/KK-IC-200P/KK-IC-400D

ELECTRIC MOTORS



KK-IM4-1010

Rated Power: 0.75 kW (1 hp)
Speed: 1440 RPM
Type: Electric
Frequency: 50 Hz, Poles: 4
Voltage: 220 v
Ampere: 5.05 A
Winding: Copper



KK-IM4-1015

Rated Power: 1.1 kW (1.5 hp)
Speed: 1440 RPM
Type: Electric
Frequency: 50 Hz, Poles: 4
Voltage: 220-240 v
Ampere: 7.3 A
Winding: Copper



KK-IM4-1020

Rated Power: 1.5 kW (2 hp)
Speed: 1440 RPM
Type: Electric
Frequency: 50 Hz, Poles: 4
Voltage: 220-240 v
Ampere: 9.5 A
Winding: Copper



KK-IM4-1030

Rated Power: 2.2 kW (3 hp)
Speed: 1440 RPM
Type: Electric
Frequency: 50 Hz, Poles: 4
Voltage: 220-240 v
Ampere: 13.8 A
Winding: Copper

ENGINES - PETROL



KK-PE4-101

Rated Power: 1.9 kW (3.2 hp)
Displacement: 152 cc
Speed: 3600 RPM
Engine: 4-Stroke, Air Cooled
Fuel Used: Petrol
Fuel Tank Capacity: 1.4 L
Fuel Consumption: 400 ml/hr



KK-PE4-103

Rated Power: 0.75 kW (1 hp)
Displacement: 98 cc
Speed: 3600 RPM
Engine: 4-Stroke, Air Cooled
Fuel Used: Petrol
Fuel Tank Capacity: 1.3 L
Fuel Consumption: 800 ml/hr



KK-PE4-203

Rated Power: 3.8 kW (5.1 hp)
Displacement: 212 cc
Speed: 3600 RPM
Engine: 4-Stroke, Air Cooled
Fuel Used: Petrol
Fuel Tank Capacity: 3.6 L
Specific Fuel Consumption: 490 g/kWh



KK-PE4-225

Rated Power: 5.21 kW (7 hp)
Displacement: 212 cc
Speed: 3600 RPM
Engine: 4-Stroke
Fuel Used: Petrol
Fuel Tank Capacity: 3.6 L
Fuel Consumption: 600 ml/hr

ENGINES - DIESEL



KK-DEV-370F

Rated Power: 3.1 kW (4.15 hp)
Displacement: 269 cc
Speed: 3600 RPM
Engine: 4-Stroke, Air Cooled
Fuel Used: Diesel
Fuel Tank Capacity: 3 L
Fuel Consumption: 1480 ml/hr



KK-DEV-378F

Rated Power: 4 kW (5.36 hp)
Displacement: 296 cc
Speed: 3600 RPM
Engine: 4-Stroke, Air Cooled
Fuel Used: Diesel
Fuel Tank Capacity: 3.5 L
Specific Fuel Consumption: 308 g/kWh



KK-DEV-386F

Rated Power: 5.2 kW (6.97hp)
Displacement: 406 cc
Speed: 3000 RPM
Engine: 4-Stroke, Air Cooled
Fuel Used: Diesel
Fuel Tank Capacity: 5 L
Specific Fuel Consumption: 308 g/kWh



KK-WPDV-173

Rated Power: 3.6 kW (4.8 hp)
Displacement: 247 cc
Speed: 3600 RPM
Engine: 4-Stroke, Single Cylinder
Fuel Used: Diesel
Suction Head: 7 m
Inlet Size: 50 mm (2")
Outlet Size: 50 mm (2")
Fuel Tank Capacity: 2.5 L
Fuel Consumption: 290 g/kWh



KK-WPDV-178

Rated Power: 4 kW (5.36 hp)
Displacement: 296 cc
Speed: 3600 RPM
Engine: 4-Stroke, Single Cylinder
Fuel Used: Diesel
Suction Head: 6 m
Inlet Size: 80 mm (3.1")
Outlet Size: 80 mm (3.1")
Fuel Tank Capacity: 3.5 L
Fuel Consumption: 308 g/kWh



DISCLAIMER:

Pictures used are for illustration purpose only. Product specifications are subject to change without prior notice. Performance of machine may vary with User/field/Working conditions.

PETROL



KK-WPP-3515

(Centrifugal)
 Displacement: 37.5 cc
 Engine: 4-Stroke
 Fuel Used: Petrol
 Max. Output: 1 kW/6000R/Min
 Suction Height: 8M
 Pump Kit: 30m



KK-WPP-10

Rated Power: 1.15 kW (1.54 hp)
 Displacement: 98 cc
 Speed: 3600 RPM
 Engine: 4-Stroke
 Fuel Used: Petrol
 Suction(Vertical): 4 m (Depth)
 Fuel Tank Capacity: 1.3 L
 Fuel Consumption: 700 ml/hr



KK-WPP-15

Rated Power: 1.15 kW (1.54 hp)
 Displacement: 98 cc
 Speed: 3600 RPM
 Engine: 4-Stroke
 Fuel Used: Petrol
 Suction(Vertical): 4 m (Depth)
 Fuel Tank Capacity: 1.3 L
 Fuel Consumption: 700 ml/hr



KK-WPP-2535 (High Lift)

Rated Power: 1.15 kW (1.54 hp)
 Displacement: 98 cc
 Speed: 3600 RPM
 Engine: 4-Stroke
 Fuel Used: Petrol
 Suction(Vertical): 3 m (Depth)
 Fuel Tank Capacity: 1.3 L
 Fuel Consumption: 700 ml/hr



KK-WPP-21

Rated Power: 2.3 kW (3.1 hp)
 Displacement: 163 cc
 Speed: 3600 RPM
 Engine: 4-Stroke, Air Cooled
 Fuel Used: Petrol
 Duty Head: 18 m
 Duty Discharge: 6.94 L/s
 Suction Size: 50 mm
 Delivery Size: 50 mm
 Fuel Tank Capacity: 3.6 L
 Fuel Consumption: 1035 g/h



KK-WPP-31

Rated Power: 3k W(4 hp)
 Displacement: 196 cc
 Speed: 3600 RPM
 Engine: 4-Stroke, Air Cooled
 Fuel Used: Petrol
 Duty Head: 24 m
 Duty Discharge: 8.5 L/s
 Suction Size: 80 mm
 Delivery Size: 80 mm
 Fuel Tank Capacity: 3.6 L
 Fuel Consumption: 1350 g/h



KK-WPP-23

Rated Power: 2.3 kW (3.1 hp)
 Displacement: 163 cc
 Engine/Fuel: 4-Stroke/Petrol
 Inlet/Outlet Size: 50mm
 Fuel Tank Capacity: 3.6 L



KK-WPP-33

Rated Power: 3.0 kW (4.02 hp)
 Displacement: 196 cc
 Engine/Fuel: 4-Stroke/Petrol
 Inlet/Outlet Size: 80mm
 Fuel Tank Capacity: 3.6 L



KK-WPC-25

Rated Power: 2.3 kW (3.08 hp)
 Displacement: 163 cc
 Speed: 3600 RPM
 Engine: 4-Stroke ; Fuel Used: Petrol
 Suction Head: 8 m
 Inlet Size: 65 mm (2.5")
 Outlet Size: 50 mm (2")
 Fuel Tank Capacity: 3.6 L
 Fuel Consumption: 450 g/kWh



KK-WPC-35

Rated Power: 3 kW (4 hp)
 Displacement: 196 cc
 Speed: 3600 RPM
 Engine: 4-Stroke ; Fuel Used: Petrol
 Suction Head: 8 m
 Inlet Size: 80 mm (3")
 Outlet Size: 65 mm (2.5")
 Fuel Tank Capacity: 3.6 L
 Fuel Consumption: 490 g/kWh



KK-WPP-50080 (High Lift)

Rated Power: 3.8 kW (5.1 hp)
 Displacement: 212 cc
 Speed: 3600 RPM
 Engine: 4-Stroke
 Fuel Used: Petrol
 Suction Head: 5 m (Depth)
 Fuel Tank Capacity: 3.6 L
 Fuel Consumption: 1800 ml/hr



KK-WPCI-2520

(Cast Iron Pump)
 Rated Power: 3.8 kW (5.1 hp)
 Displacement: 212 cc
 Speed: 3600 RPM
 Engine: 4-Stroke ; Fuel Used: Petrol
 Suction Head: 7 m
 Inlet Size: 65 mm (2.5")
 Outlet Size: 50 mm (2")
 Fuel Tank Capacity: 3.6 L
 Fuel Consumption: 308 g/kWh



KK-WPE-800C

Rated Power: 0.8 kW (1.1 hp)
Speed: 2850 RPM
Max Flow Rate: 300 L/min
Max Head: 14 m
Electric Source: 220V/50Hz
Phase: Single
Insulation: B
Discharge: 2"



KK-WPE-1100C

Rated Power: 1.1 kW (1.5 hp)
Speed: 2850 RPM
Max Flow Rate: 350 L/min
Max Head: 19 m
Electric Source: 220V/50Hz
Phase: Single
Insulation: B
Discharge: 2"



KK-WPE-1500C

Rated Power: 1.5 kW (2 hp)
Speed: 2850 RPM
Max Flow Rate: 350 L/min
Max Head: 23 m
Electric Source: 220V/50Hz
Phase: Single
Insulation: B
Discharge: 2"



KK-WPE-550F

Rated Power: 0.55 kW (0.75 hp)
Speed: 2850 RPM
Max Flow Rate: 400 L/min
Max Head: 9.5 m
Electric Source: 220V/50Hz
Voltage: 550 W
Insulation: Class B
Protection: IP68



KK-WPE-750F

Rated Power: 0.74 kW (1 hp)
Speed: 2850 RPM
Max Flow Rate: 400 L/min
Max Head: 10.8 m
Electric Source: 220V/50Hz
Voltage: 750 W
Insulation: Class B
Protection: IP68



KK-WPE-1100F

Rated Power: 1.11 kW (1.5 hp)
Speed: 2850 RPM
Max Flow Rate: 500 L/min
Max Head: 13.5 m
Electric Source: 220V/50Hz
Voltage: 1100 W
Insulation: Class B
Protection: IP68



KK-WPE-1500F

Rated Power: 1.49 kW (2 hp)
Speed: 2850 RPM
Max Flow Rate: 600 L/min
Max Head: 15 m
Electric Source: 220V/50Hz
Voltage: 1500 W
Insulation: Class B
Protection: IP68



KK-WPE-2200F

Rated Power: 2.23 kW (3 hp)
Speed: 2850 RPM
Max Flow Rate: 600 L/min
Max Head: 17 m
Electric Source: 380V-50Hz
Voltage: 2200 W
Insulation: Class B
Protection: IP68



KK-WPE-WQ30

Rated Power: 4.1 kW (5.5 hp)
Speed: 2850 RPM
Max Flow Rate: 800 L/min
Max Head: 28 m
Electric Source: 380V-50Hz
Voltage: 4100 W
Insulation: Class B
Protection: IP68



KK-WPE-WQ48

Rated Power: 5.60 kW (7.5 hp)
Speed: 2850 RPM
Max Flow Rate: 1050 L/min
Max Head: 28 m
Electric Source: 380V-50Hz
Voltage: 5600 W
Insulation: Class B
Protection: IP68



KK-WPE-WQ50

Rated Power: 4.1 kW (5.5 hp)
Speed: 2850 RPM
Max Flow Rate: 1000 L/min
Max Head: 24.5 m
Electric Source: 380V-50Hz
Voltage: 4100 W
Insulation: Class B
Protection: IP68



KK-WPE-WQDR15

Rated Power: 1.5 kW (2 hp)
Speed: 2850 RPM
Max Flow Rate: 800 L/min
Max Head: 15 m
Electric Source: 220V-50Hz
Voltage: 1500 W
Insulation: Class B
Protection: IP68



KK-WPE-400SB

Rated Power: 0.4 kW (0.55 hp)
Speed: 2880 RPM
Type: Single Phase
Induction Motor
Poles: 4 ; Frequency: 50 Hz
Voltage: 220-240 v
Ampere: 1.75 A
Winding: Copper
Discharge Range: 15-120 LPM
Max Head: 7 m ; Min Head: 2.3 m
Pump Delivery Size: 32 mm



KK-WPE-37SB

Rated Power: 0.37 kW (0.5 hp)
Speed: 2880 RPM
Type: Single Phase
Induction Motor
Poles: 4 ; Frequency: 50 Hz
Voltage: 220-240 v
Ampere: 2.86 A, Winding: Copper
Discharge Range: 20-100 LPM
Max Head: 16 m; Min Head: 8 m
Pump Delivery Size: 25 mm



KK-WPE-75SB

Rated Power: 0.75 kW (1 hp)
Speed: 2880 RPM
Type: Single Phase
Induction Motor
Poles: 4 ; Frequency: 50 Hz
Voltage: 220-240 v
Ampere: 7.8 A, Winding: Copper
Discharge Range: 20-133 LPM
Max Head: 32 m; Min Head: 15 m
Pump Delivery Size: 25 mm

DISCLAIMER:

Pictures used are for illustration purpose only. Product specifications are subject to change without prior notice. Performance of machine may vary with User/field/Working conditions.

PETROL



KK-708

FMTTI

Chemical Tank: 20 L
 Rated Power: 0.7 kW (1 hp)
 Engine: 2-Stroke
 Displacement: 25.6 cc
 Speed: 7500 RPM
 Fuel Tank Capacity: 0.750 L
 Fuel Consumption: 500 ml/hr
 Max Discharge Rate: 7.515 L/min



KK-KPS-162

FMTTI

Chemical Tank: 20 L
 Rated Power: 0.7 kW (1 hp)
 Engine: 2-Stroke
 Displacement: 25.6 cc
 Speed: 6500 RPM
 Fuel Tank Capacity: 0.750 L
 Fuel Consumption: 750 ml/hr
 Liquid Output: 7.492 L/min



KK-KPS-802

Chemical Tank: 25 L
 Rated Power: 0.7 kW (1 hp)
 Engine: 2-Stroke
 Displacement: 26 cc
 Speed: 7500 RPM
 Fuel Tank Capacity: 600 ml
 Fuel Consumption: 500 ml/hr
 Liquid Output: 8 L/min



KK-KPS-204

FMTTI

Chemical Tank: 20 L
 Rated Power: 0.7 kW (1 hp)
 Engine: 4-Stroke
 Displacement: 31.1 cc
 Speed: 6500 RPM
 Fuel Tank Capacity: 0.600 L
 Fuel Consumption: 650 ml/hr
 Liquid Output: 8.200 L/min

MANUAL

MANUAL CUM BATTERY



KK-KPS-804

FMTTI

Chemical Tank: 25 L
 Rated Power: 0.7 kW (1 hp)
 Engine: 4-Stroke
 Displacement: 21 cc
 Speed: 6500 RPM
 Fuel Tank Capacity: 0.6 L
 Fuel Consumption: 650 ml/hr
 Liquid Output: 7.370 L/min



KK-KPS-222

Rated Power: 1 kW (1.34 hp)
 Engine: 4-Stroke, Petrol Engine
 Displacement: 37.7 cc
 Speed: 6500 RPM
 Chemical Tank Capacity: 30 L
 Fuel Tank Capacity: 600 ml
 Liquid Output: 7-8 L/min
 Fuel Consumption: 650 ml/hr



KK-16LTR

FMTTI

Chemical Tank : 16 L
 Liquid Output: 750 ml/min
 Type of Cylinder: Engg Plastic



KK-BBS-318

FMTTI

Chemical Tank: 18 L
 Max Discharge Rate: 385.0 ml/min
 Battery Power: 12V, 8AH
 Extra: Voltmeter, Regulator

BATTERY



KK-BBS-201

Chemical Tank: 20 L
 Liquid Output: 7.2 L/min
 Battery Power: 12 V (12 AH)
 Charger: 1.7 A
 Extra: Robust Construction, Telescope lance, Heavy duty trigger control, High Speed Double Motor, Heavy duty tank, 1 set Extra Gun set and LED bulb 5V



KK-BBS-185

FMTTI

Chemical Tank: 18 L
 Liquid Output: 2065.0 ml/min
 Battery: 12 V DC-8 AH
 Charger: 1.0 A
 Extra: Battery, LED Light, Mobile Charger, Voltmeter, Regulator



KK-BBS-199

FMTTI

Chemical Tank: 18 L
 Max Discharge Rate: 5115 ml/min
 Battery Power: 12 V (12 AH)
 Charger: 1.17 A
 Extra: Robust Construction, Heavy Duty Trigger Control & Tank, High Speed Double Motor



KK-BBS-999

Chemical Tank: 18 L
 Liquid Output: 7.2 L/min
 Battery Power: 12 V (12 AH)
 Charger: 1.7 A
 Extra: Robust Construction, Heavy Duty Trigger Control & Tank, High Speed Double Motor



KK-PBS-299

Operation Type: Battery
 Battery: 12 V, 12 AH
 Charger: 1.7A
 Liquid Output: 7.2 L/M
 Extra: Robust Construction Inlet Hose & Big Filter High Speed Double Motor



KK-18CI3

Engine Power: 1.5-2 kW (2-2.7 hp)
Pump Speed: 800-1200 RPM
Output Pressure: 10-40 kg/cm²
Suction Volume: 10-18 L/min
Pump Oil(20w40 Grade): 450 ml



KK-22CI3

FMTTI

Engine Power: 2.23 kW (3 hp)
Pump Speed: 800-1000 RPM
Output Pressure: 25 kg/cm²
Suction Volume: 13-22 L/min
Pump Oil(20w40 Grade): 700 ml



KK-30CI3

Engine Power: 2.2-4.8 kW (3-6.5 hp)
Pump Speed: 800-1200 RPM
Output Pressure: 10-40 kg/cm²
Suction Volume: 30-40 L/min
Pump Oil(20w40 Grade): 900 ml



KK-33CI3

FMTTI

3 Ball Cock of 10mm Each
Engine Power: 2.23 kW (3 hp)
Pump Speed: 800-1000 RPM
Output Pressure: 28 kg/cm²
Suction Volume: 30 - 40 L/min
Pump Oil(20w40 Grade): 900 ml



KK-45CI3

Engine Power: 2.2-4.8 kW (3-6.5 hp)
Pump Speed: 800-1200 RPM
Output Pressure: 10-40 kg/cm²
Suction Volume: 30-40 L/min
Pump Oil(20w40 Grade): 1000 ml



KK-53CI3

3 Ball Cock of 10mm Each
Engine Power: 2.2-4.8 kW (3-6.4 hp)
Pump Speed: 800-1200 RPM
Output Pressure: 10-40 kg/cm²
Suction Volume: 30-40 L/min
Pump Oil(20w40 Grade): 1000 ml



KK-80CI3

Engine Power: 5.2-6.7 kW (7-9 hp)
Pump Speed: 800-1200 RPM
Output Pressure: 10-50 kg/cm²
Suction Volume: 65-80 L/min
Pump Oil(20w40 Grade): 1500 ml



KK-22X3

Pump Speed: 800-1000 RPM
Output Pressure: 10 - 40 kg/cm²
Suction Volume: 10- 22 L/min



KK-30X3

Pump Speed: 800-1000 RPM
Output Pressure: 10 - 40 kg/cm²
Suction Volume: 30- 40 L/min



KK-33X3

Pump Speed: 800-1000 RPM
Output Pressure: 10 - 40 kg/cm²
Suction Volume: 30- 40 L/min



KK-53X3

Pump Speed: 800-1000 RPM
Output Pressure: 10 - 40 kg/cm²
Suction Volume: 45- 66 L/min



KK-25CI3

Engine Power: 0.30-0.59 kW (0.4-0.8 hp)
Pump Speed: 800-1000 RPM
Output Pressure: 10-40 kg/cm²
Suction Volume: 9.5-10.5 L/min
Pump Oil(20w40 Grade): 900 ml



KK-35CI3

Engine Power: 1.49-2.23 kW (2-3 hp)
Pump Speed: 800-1000 RPM
Output Pressure: 10-40 kg/cm²
Suction Volume: 16.5-20.5 L/min
Pump Oil(20w40 Grade): 900 ml



KK-38CI3

Engine Power: 1.49-2.23 kW (2-3 hp)
Pump Speed: 800-1000 RPM
Output Pressure: 10-40 kg/cm²
Suction Volume: 16.5-20.5 L/min
Pump Oil(20w40 Grade): 900 ml



KK-58CI3

Engine Power: 1.49-2.23 kW (2-3 hp)
Pump Speed: 800-1000 RPM
Output Pressure: 10-40 kg/cm²
Suction Volume: 16.5-20.5 L/min
Pump Oil(20w40 Grade): 1000 ml

DISCLAIMER:

Pictures used are for illustration purpose only. Product specifications are subject to change without prior notice. Performance of machine may vary with User/field/Working conditions.

PETROL



KK-PSP-18

HTP Sprayer: KK-18CI3
Engine: KK-PE4-103 (Petrol)
Rated Power: 1.5-2 Kw (1.1-1.4 hp)
Displacement: 98 cc



KK-PSP-22 **FMTTI**

HTP Sprayer: KK-22CI3
Engine: KK-PE4-163 (Petrol)
Rated Power: 2.3 kW(3.1 hp)
Displacement: 163 cc



KK-PSP-30 **FMTTI**

HTP Sprayer: KK-30CI3
Engine: KK-PE4-203 (Petrol)
Rated Power: 3 kW(4.02 hp)
Displacement: 196 cc



KK-PSP-25

HTP Sprayer: KK-25CI3
Engine: KK-PE4-163 (Petrol)
Rated Power: 2.3 kW(3.1 hp)
Displacement: 163 cc

PETROL



KK-PSP-15

HTP Sprayer: KK-18CI3
Engine: KK-PE4-103 (Petrol)
Rated Power: 1.5-2 kW(1.1-1.4 hp)
Displacement: 98 cc



KK-PSP-22X3

Rated Power: 4.84 kW (6.5 hp)
Displacement: 196 cc
Engine: 4-Stroke, Petrol Engine
Fuel Tank: 3.6 L
Pump Speed: 800-1000 RPM
Out Pressure: 10-40 kg/cm²
Suction Volume: 10 - 22 L/min



KK-PSP-202T

Rated Power: 4.84 kW (6.5 hp)
Displacement: 163 cc
Engine: 4-Stroke, Petrol Engine
Engine Speed: 3600 RPM
Fuel Tank: 3.6 L
Spray Speed: 800-1200 RPM
Suction Volume: 9.5-10.5 L/min
Pressure: 1.5-3.5 kg/cm²

ELECTRIC



KK-PSE-22X3

Rated Power: 1.5 kW (2 hp)
Motor Speed: 1400 RPM
Pump Speed: 800-1000 RPM
Output Pressure: 10-40 kg/cm²
Suction Volume: 10-22 L/min

ELECTRIC

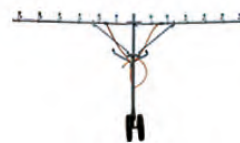


KK-PSE-30X3

Rated Power: 2.2 kW (3 hp)
Motor Speed: 1400 RPM
Pump Speed: 800-1200 RPM
Output Pressure: 10-40 kg/cm²
Suction Volume: 30-40 L/min



Heavy Duty Delivery Hose
8.5mm: 25, 50, 100 m
10mm: 100 m



Boom Lance



HTP Base Frame
Medium duty
(Using Steel Pipes)



Hose Crimping Machine
(8.5, 10mm)



Base stand
Heavy Duty
(Using Steel Angles & Channels)



Hose Reel

Spray Guns



Turbo Gun



Axle Gun



Bent Gun



KK-EUG-30

Nozzles: Different Types
Guns: 1', 1.5', 2', 3', 5', 10', 24'



KK-P768

FMTTI

Rated Power: 0.7 kW (1 hp)
Displacement: 26 cc
Speed: 7000 RPM
Engine Type/Fuel: 2-Stroke/Petrol
Fuel Tank Capacity: 0.75 L
Fuel Consumption: 500 ml/hr
Suction Volume: 7-8 L/min



KK-PPS-P769

Rated Power: 0.7 kW (1 hp)
Displacement: 34 cc
Speed: 7500 RPM
Engine Type/Fuel: 2-Stroke/Petrol
Fuel Tank Capacity: 600 ml
Fuel Consumption: 500 ml/hr
Suction Volume: 9 L/min



KK-P780

Rated Power: 0.75 kW (1 hp)
Displacement: 43 cc
Speed: 7500 RPM
Engine Type/Fuel: 2-Stroke/Petrol
Fuel Tank Capacity: 1 Ltr
Fuel Consumption: 500 ml/hr
Suction Volume: 9 L/min



KK-P968

FMTTI

Rated Power: 1 kW (1.35 hp)
Displacement: 98 cc
Speed: 3600 RPM
Engine Type: 4-Stroke
Fuel: Petrol Start & Kerosene Run
Fuel Tank Capacity: 1.3 L
Fuel Consumption: 800 ml/hr
Suction Volume: 12.3 L/min



KK-PPS-P764

FMTTI

Rated Power: 0.7 kW (1 hp)
Displacement: 31 cc
Speed: 6500 RPM
Engine Type/Fuel: 4-Stroke/Petrol
Fuel Tank Capacity: 0.600 L
Fuel Consumption: 500 ml/hr
Suction Volume: 7-8 L/min



KK-P999

Rated Power: 4.2 kW (5.5 hp)
Displacement: 163 cc
Speed: 1800 RPM(Engine)
Engine Type: 4-Stroke
Fuel: Petrol
Fuel Consumption: 1000 ml/hr
Suction Volume: 24 L/min



KK-P777

Rated Power: 1 kW (1.34 hp)
Displacement: 37.7 cc
Speed: 6500 RPM
Engine: 4-Stroke, Petrol Engine
Fuel Tank Capacity: 600 ml
Fuel Consumption: 650 ml/hr
Suction Volume: 15-30 L/min



ELECTRIC

KK-P898E

Rated Power: 0.8 kW (1 hp)
Speed: 2800 RPM
Frequency: 50 Hz
Voltage: 220 V
Ampere: 3.7 A

ORCHARD SPRAYERS



KK-ABOS-0750

Required Power : ≥ 8.95 kW (18-25 hp)
Mating Power: 4.47 kW (6 hp)
Pump Speed: 500 - 600 RPM
Chemical Tank: 750 L
Spray Range: ≥ 20 m (h), ≥ 6 m (v)
Nozzles: 10
Pump Flow Rate: 60 L/min
Working Pressure: 25 bar
Ventilation Fan Dia: 600 mm
Hand Wash Tank: 15 L
Flush Tank: 100 L

KK-ABOS-0600

Required Power: 11 kW (15 hp)
Chemical Tank: 600 L
Spray Range: 10 m
Nozzles: 10
Pump Flow Rate: 54 L/min
Working Pressure: 0-4 MPa
Ventilation Fan Dia: 600 mm
Hand Wash Tank: 10 L
Flush Tank: N/A



DISCLAIMER:

Pictures used are for illustration purpose only. Product specifications are subject to change without prior notice. Performance of machine may vary with User/field/Working conditions.

SEEDERS/TRANSPLANTER- MANUAL



KK-MBT-01
Manual Seeding
Transplanter



KK-MSD-S01
Manual Seeder
Single Barrel



KK-MSD-SF02
Manual Seeder Cum
Fertilizer
Double Barrel



KK-MSD-B1



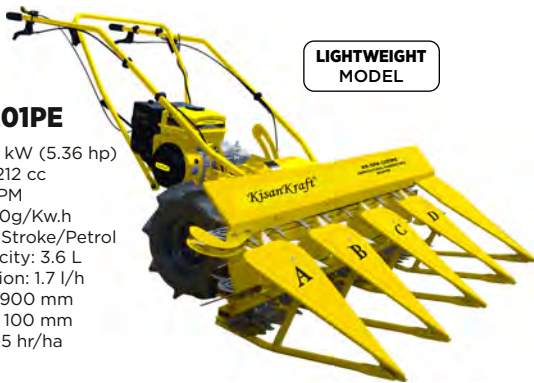
KK-SFD-05 (5-Rows)

Fits KisanKraft Intercultivators
1. KK-IC-200P
2. KK-IC-300D
3. KK-IC-400D

KK-SFD-03 (3-Rows)

Fits KisanKraft Intercultivators
1. KK-IC-200P
2. KK-IC-300D
3. KK-IC-400D

SELF PROPELLED REAPERS



LIGHTWEIGHT
MODEL

KK-SPR-1201PE

Rated Power: 4 kW (5.36 hp)
Displacement: 212 cc
Speed: 3600 RPM
SFC (Max): $\leq 420\text{g/Kw.h}$
Engine/Fuel: 4-Stroke/Petrol
Fuel Tank Capacity: 3.6 L
Fuel Consumption: 1.7 l/h
Cutting Width: 900 mm
Cutting Height: 100 mm
Productivity: 4-5 hr/ha



KK-SPR-1201P **FMTTI**

Rated Power: 3.79 kW (5.08 hp)
Displacement: 212 cc
Rated Speed: 3600 RPM
SFC (Max): $\leq 374\text{g/Kw.h}$
Engine/Fuel: 4-Stroke/Petrol
Fuel Tank Capacity: 3.6 L
Fuel Consumption: 1.29 L/hr
Cutting Width: 1.13 to 1.16 m
Cutting Height: 37 mm
Productivity: 0.241 to 0.297 ha/hr



KK-SPR-1201P (Short Crop)

Rated Power: 3.8 kW (5.1 hp)
Displacement: 212 cc
Speed: 3600 RPM
SFC (Max): $\leq 374\text{g/Kw.h}$
Engine/Fuel: 4-Stroke/Petrol
Fuel Tank Capacity: 3.6 L
Fuel Consumption: 700 ml/h
Cutting Width: 1200 mm
Cutting Height: 50 mm
Productivity: 5-7.5 hr/ha

Suitable For Short Crops

- | | |
|----------------|--------------|
| 1. Green Gram | 6. Rajma |
| 2. Black Gram | 7. Barseem |
| 3. Bengal Gram | 8. Lucern |
| 4. Soybean | 9. Papermint |
| 5. Horse Gram | 10. Cumim |

STUBBLE MOWER



KK-STB-050

Rated Power: 5 kW (6.7 hp)/3600 RPM
Engine: 4-Stroke, Petrol Engine
Displacement: 302 cc
Cutting width: 700 mm
Stub Height: 3 - 8 mm
Speed: 3600 RPM (Eng)
Number of Gears: 3 Fwd, 1 Rev
Fuel Tank Capacity: 6.5 L

MAIZE/CORN HARVESTER



KK-MCH-01D

Rated Power: 5.2 kW (7 hp)
 Engine Type: 4-Stroke, Air Cooled
 Fuel: Diesel Engine
 Row Gap: 45cm
 Efficiency: 3 Hours/Acre
 Optional: Pulverization of corn Stalk
 collection unit available for easy
 operation

MAIZE SHELLER



KK-MZS-01

Rated Power: 2.23-2.98 kW (3 hp- 4hp)
 RPM: 1400 - 1600
 Engine Type: Single Phase Motor or
 Engine (not supplied in the box)
 Max Output: 1-2 Ton/hr
 Tooth Space: 20mm

MAIZE DEHUSKER



KK-MZD-02

Rated Power: 3kW (3hp - 4hp)
 RPM: 1400 - 1600
 Engine Type: Single Phase Motor or
 Engine (not supplied in the box)
 Max Output: 1-2 Ton/hr
 Tooth Space: 20mm

RICE MILL



KK-RM-6NF4X

Type: Electric
 Rated Power: 2.23 kW (3 hp)
 Spindle Speed: 2800 RPM
 Frequency: 50 Hz
 Voltage: 220 V
 Mill Productivity: 120-180 kg/h



KK-RM-6N40

Type: Electric
 Rated Power: 1.86 kW (2.5 hp)
 Spindle Speed: 1400-1600 RPM
 Frequency: 50/60 Hz
 Voltage: 220 V
 Mill Productivity: 150 kg/h



KK-RMC-F4C21

Type: Electric
 Rated Power: 2.23 kW (3 hp)
 Spindle Speed: 2800 RPM
 Frequency: 50 Hz
 Voltage: 220 V
 Mill Productivity: 160-200 kg/h
 Flour Productivity: 120-140 kg/h

TEA LEAF HARVESTERS



KK-TH-525

Rated Power: 0.75 kW (1 hp)
 Displacement: 26 cc
 Speed: 7500 RPM
 Engine: 2-Stroke
 Fuel Used: Petrol
 Fuel Tank Capacity: 750 ml
 Fuel Consumption: 850 ml/hr
 Output Capacity: 400 kg/hr



KK-TH4-34

Rated Power: 0.9 kW (1.2 hp)
 Displacement: 34 cc
 Speed: 7800 RPM
 Engine: 4-Stroke
 Fuel Used: Petrol/Gasoline
 Fuel Tank Capacity: 750 ml
 Fuel Consumption: 650 ml/hr
 Output Capacity: 400 kg/hr



KK-TH-725

Rated Power: 0.75 kW (1 hp)
 Displacement: 25.4 cc
 Engine: 2-Stroke, Gasoline
 Speed: 7500 RPM
 Carburetor: Walbro
 Blade Length: 600 mm (SK5)
 Tea Bag: 6 m (1 Piece)

DISCLAIMER:

Pictures used are for illustration purpose only. Product specifications are subject to change without prior notice. Performance of machine may vary with User/field/Working conditions.

TEA LEAF HARVESTERS - ELECTRIC



KK-TH-4C30A

Battery: DC 24V, 12Ah
(Lithium Battery)
Power: 300W (Brushless Motor)
Blade Length: 300 mm



KK-TH-33A

Battery: DC 24V, 10Ah
(Lithium Battery)
Power: 300W (Brushless Motor)
Blade Length: 330 mm



KK-HTP-600

Rated Power: 0.74 kW (1 hp)
Displacement: 25.4 cc
Speed: 2300 (No-load Speed) Idle
Engine Type: 2-Stroke, Petrol,
Single Cylinder
Fuel Used: Petrol
Fuel Tank Capacity: 600ml
Fuel Consumption: 600ml/hr



KK-HTE-600 (Electric)

Input Power: 600 W
Cutting Length: 510 mm
Voltage: 220-240V
Frequency: 50 Hz
Max Cutting Dia. : 16 mm
No Load Speed: 1750/min

LEAF BLOWERS



KK-LBV-260

Rated Power: 0.74 kW (1 hp)
Displacement: 26 cc
Speed: 7500 RPM
Engine: 2-Stroke
Fuel Used: Petrol
Fuel Tank Capacity: 600 ml
Average Air Volume: 130 L/sec



KK-LBV-650

Rated Power: 2.7 kW (3.62 hp)
Displacement: 63 cc
Speed: 6800 RPM
Engine: 2-Stroke
Fuel Used: Petrol
Fuel Tank Capacity: 1200 ml
Average Air Volume: 300 L/sec



TEA PRUNER

KK-TC2-8641

Rated Power: 1.25 kW (1.7 hp)
Displacement: 40 cc
Speed: 7000 RPM
Engine: 2-Stroke, Air Cooled,
Vertical Piston Valve, Gasoline
Fuel Used: Petrol mixed with
Lubricating oil (40:1)
Fuel Tank Capacity: 1100 ml
Fuel Consumption: 0.75 ml/hr

BRUSH CUTTERS-TROLLEY TYPE

KK-BC2-52T

Rated Power: 1.47 kW (1.97 hp)
Displacement: 52 cc
Speed: 6500 RPM
Engine: 2-Stroke, Petrol
Fuel Tank Capacity: 1.2 L



KK-BC4-35T

Rated Power: 1 kW (1.34 hp)
Displacement: 37.7 cc
Speed: 6500 RPM
Engine: 4-Stroke, Petrol
Fuel Tank Capacity: 1.2 L



KK-BC-8640 **FMTTI**

Walbro Carburetor
 Rated Power: 1.14 kW (1.5 hp)
 Displacement: 42.7 cc
 Speed: 6600 RPM
 Engine: 2-Stroke, Air Cooled
 Fuel Used: Petrol
 Fuel Tank Capacity: 1.1 L
 Fuel Consumption: 0.75-0.77 L/hr



KK-BC-7640 **FMTTI**

Rated Power: 1.14 kW (1.5 hp)
 Displacement: 40 cc
 Speed: 6600 RPM
 Engine: 2-Stroke, Air Cooled
 Fuel Used: Petrol
 Fuel Tank Capacity: 1.1 L
 Fuel Consumption: 0.85 L/hr



KK-BC2-8665 **FMTTI**

Rated Power: 2 kW (2.68 hp)
 Displacement: 63.3 cc
 Speed: 7500 RPM
 Engine: 2-Stroke, Air Cooled
 Fuel Used: Petrol
 Fuel Tank Capacity: 1.3 L
 Fuel Consumption: 0.79 L/hr



KK-BC4-8634 **FMTTI**

Rated Power: 0.42 kW (0.56 hp)
 Displacement: 34 cc
 Speed: 7800 RPM
 Engine: 4-Stroke, Air Cooled
 Fuel Used: Petrol
 Fuel Tank Capacity: 0.65 L
 Fuel Consumption: 0.318 L/hr



KK-BC4-8635

Rated Power: 1 kW (1.34 hp)
 Displacement: 35.8 cc
 Speed: 2800 - 3000 RPM
 Engine: 4-Stroke
 Fuel Used: Petrol
 Fuel Tank Capacity: 0.65 L



KK-BC-555

Rated Power: 1.45 kW (1.94 hp)
 Displacement: 51.7 cc
 Engine: 2-Stroke
 Fuel Used: Petrol
 Fuel Tank Capacity: 1400 ml
 Fuel Consumption: 800 ml/hr



KK-BC4-8637

Rated Power: 0.9 kW (1.2 hp)
 Displacement: 34 cc
 Speed: 7800 RPM
 Engine: 4-Stroke, Air Cooled
 Fuel Used: Petrol
 Fuel Tank Capacity: 650 ml
 Fuel Consumption: 0.72 L/hr

SHOULDER MOUNTED



KK-SBC-4302 **FMTTI**

Rated Power: 1.5 kW (2 hp)
 Displacement: 43 cc
 Speed: 6500 RPM
 Engine: 2-Stroke, Air Cooled
 Fuel Used: Petrol
 Fuel Tank Capacity: 0.9 L
 Fuel Consumption: 0.65 L/hr



KK-SBC-3804

Rated Power: 1.0 kW (1.34 hp)
 Displacement: 37.7 cc
 Engine: 4-Stroke
 Fuel Used: Petrol
 Fuel Tank Capacity: 1.3 L



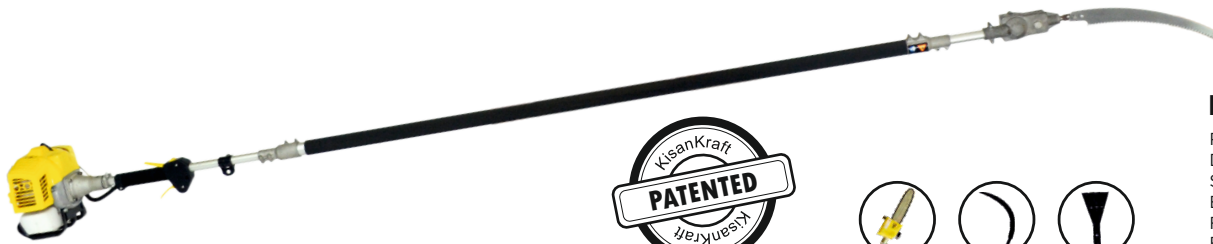
KK-SBC-3404

Rated Power: 0.9 kW (1.2 hp)
 Displacement: 34 cc
 Speed: 7800 RPM
 Engine: 4-Stroke, Air Cooled
 Fuel Used: Petrol
 Fuel Tank Capacity: 700 ml
 Fuel Consumption: 500 ml/hr

DISCLAIMER:

Pictures used are for illustration purpose only. Product specifications are subject to change without prior notice. Performance of machine may vary with User/field/Working conditions.

PALM HARVESTER



Chainsaw



Sickel



Chiesel

KK-PH2-215 **FMTTI**

Rated Power: 0.32 kW (0.43 hp)
Displacement: 25.4 cc
Speed: 7000 RPM
Engine: 2-Stroke, Air Cooled
Fuel Used: Petrol
Fuel Tank Capacity: 800 ml
Fuel Consumption: 0.784 L/hr

OTHER ACCESSORIES



2 Point Blade



3 Point Blade
(Pointed)



3 Point Blade
(Standard)



Heavy Duty
TCT Saw Blades



TCT & NON TCT Saw Blades

TCT Saw Blades: 8", 10", 12" Dia
Teeth: 40, 60, 80, 100, 120 etc.
NON TCT Saw Blades: 8", 10" Dia
Teeth: 60, 80, 100, 120 etc.



Paddy Guards



Nylon Ropes
(15 & 40 m)

Square □
Star ☆
Round ○



Nylon Ropes
(280 m)

PADDY WEEDERS



PADDY WEEDER

Attachment for Agriculture Reaper
Blade Style: Teeth Blade
Blade: 9 Sheet
Width: 590-600 mm
Diameter: 310 mm
Pipe Diameter: 28mm
Gear Case: Heavy Duty Gear
Connection Diameter: 8 mm
Teeth: 9T-Star



KK-PW-01

Agriculture Paddy Weeder Attachment
Blade Style: 10T
Blade: 2 Blade (20 Nos)
Width: 170mm
Diameter: 196mm
Pipe Diameter: 26mm
Gear Case: Normal
Connection Diameter: 29mm
Teeth: Square



HOE CUTTERS



KK-HC-3526

Blade Style: Bevel Blade
Blade: 12 Nos
Width: 340-350 mm
Diameter: 180 mm
Outer Dia: 26 mm
Drive Shaft: 8 mm
Teeth: 9T-Star
Gear Shaft Length: 14.5 cm



KK-HC-3528

Blade Style: Bevel Blade
Blade: 2 Nos
Width: 340-350 mm
Diameter: 180 mm
Outer Dia: 28 mm
Drive Shaft: 8 mm
Teeth: 9T-Star



KK-HC-2126

Blade Style: Direct Blade
Blade: 12 Nos
Width: 270-290 mm
Diameter: 150 mm
Outer Dia: 26 mm
Drive Shaft: 8 mm
Teeth: 9T-Star
Gear Shaft Length: 14.5 cm



KK-HC-2128

Blade Style: Direct Blade
Blade: 12 Nos
Width: 270-290 mm
Diameter: 150 mm
Outer Dia: 28 mm
Drive Shaft: 8 mm
Teeth: 9T-Star



KK-HC-1528

Blade Style: Direct Blade
Blade: 6 Nos
Width: 150-180 mm
Diameter: 180 mm
Outer Dia: 28 mm
Drive Shaft: 8 mm
Teeth: 9T-Star
Gear Shaft Length: 14.5 cm

POST HOLE DIGGERS



KK-PPDE-71

FMTTI

1-Man Operated
Rated Power: 2.23kW (3.0 hp)
Displacement: 71cc
Engine: 2-Stroke, Air Cooled, Petrol
Speed : 8500 RPM
Fuel Tank Capacity: 0.8 L
Fuel Consumption: 0. 650 L/hr
Output Performance: 40-52 Pits/hr



KK-PPDE-62

1-Man Operated
Rated Power: 2kW (2.7 hp)
Displacement: 62cc
Engine: 2-Stroke, Air Cooled, Petrol
Speed: 300 RPM
Fuel Tank Capacity: 1200ml



KK-PPDE-52

1-Man Operated
Rated Power: 1.4 kW (1.87 hp)
Displacement: 51.7 cc
Engine: 2-Stroke, Air Cooled, Petrol
Engine Speed: 8500 RPM
Bit Steed: 0 - 280 RPM
Fuel Tank Capacity: 800ml
Fuel Consumption: 650ml/hr
Output Performance: 40-52 pits/hr

AUGER BITS



Sizes Available

4 Inch
6 Inch
8 Inch
10 Inch
12 Inch

THERMAL FOGGING SPRAYERS



KK-TF-8605

Operation Mode: Self Start Gas
Assisted by Electronic Lighter
Fuel Used: Butane Gas
Combustion Power/Consumption:
500ml/3 hrs of Butane Gas
Spraying: (Chemical+Diesel) Mixture
Chemical/Fuel Tank Capacity: 2 L Chemical Tank
Particle size: 5-30 Microns
Fogging Capacity:13 L/hr



KK-TF-8625S (Stainless Steel)

Operation Mode: Self start &
Manual Start -Assisted by Petrol
Combustion Power/Consumption:
18.5 kW/hr/750ml/hr
Fuel Used: Petrol
Spraying: (Chemical+Diesel) mixture
Chemical Tank Capacity: 6 L
Fuel Tank Capacity: 1.2 L (Petrol)
Fogging Capacity: 25 L/hr
Particle Size: 10-50 Microns



KK-STF-480

Chemical: 8*2 Ltr SS
Fuel Tank: 2 Ltr SS
Starting: Manual & Electric
Battery: 12V 2.6Ah
Net Weight: 11.5 Kgs
Fuel Consumption: 2.6 L/H
Fogging Capacity: 1.5 L/M

COLD FOGGING SPRAYERS



KK-ULV-4000

Tank Capacity: 4L
Tank Material: PE
Droplet Size: 5-30 microns
Voltage: 110-220V
Rotate: 20000 RPM
Flow Rate: 19 L/H
Horizontal Range: 15M
Dimension: 365x285x450 mm



KK-ULV-5000

Tank Capacity: 5L
Tank Material: PE
Droplet Size: 5-50 microns
Voltage: 110-220V
Rotate: 20000 RPM
Flow Rate: 19 L/H
Horizontal Range: 20M
Dimension: 365x285x430 mm

CHAFF CUTTER



KK-FMC-500

FMTTI

HP (Electric Motor): 3 HP
HP (Diesel Engine): 3.7 kW (5 hp)
Speed: 1400 RPM
Maximum Output-Dry: 709 kg/hr

DISCLAIMER:

Pictures used are for illustration purpose only. Product specifications are subject to change without prior notice. Performance of machine may vary with User/field/Working conditions.

MILKING MACHINE



KK-MLK-VB1

Motor: 1.1 kW (1.5 hp)
 Pump: Vacuum
 Pulsator: 1(L-80)
 Tank: 1
 Tank Size/Weight: 25 L/3 kg
 Tank Material: SS-304
 (Stainless Steel)
 Vacuum Speed: 200 L/min
 Milk Claw: 280 cc with Plastic Chasis
 Animal: Cow & Buffalo
 Output Capacity: 3 L/min

ELECTRIC RUN



KK-LME-1400

Rated Power: 1.4 kW (1.8 hp)
 Type of Operation: Manual Push
 Source of Power: Electricity
 Speed: 2900 RPM
 Voltage: 230-240 V (50 Hz)
 Cutting Width: 380 mm
 Cutting Height: 25-75 mm
 Height Adjustment: 6
 Grass Catcher: 40 L



KK-LME-1800

Rated Power: 1.8 kW (2.4 hp)
 Type of Operation: Manual Push
 Source of Power: Electricity
 Speed: 2900 RPM
 Voltage: 230-240 V (50 Hz)
 Cutting Width: 460 mm
 Cutting Height: 25-75 mm
 Height Adjustment: 7
 Grass Catcher: 60 L

PETROL RUN



KK-LME-1900

Rated Power: 1.8 kW (2.4 hp)
 Type of Operation: Self Propelled
 Source of Power: Electricity
 Speed: 2900 RPM
 Voltage: 230-240V (50 Hz)
 Cutting Width: 460 mm
 Cutting Height: 25-75 mm
 Height Adjustment: 7
 Grass Catcher: 60 L



KK-LMP-6416

Rated Power: 3 kW (4 hp)
 Displacement: 135 cc
 Engine Type: 4-Stroke
 Fuel: Petrol ; Speed: 2800 RPM
 Type of Operation: Manual Push
 Fuel Tank Capacity: 1.2 L
 Cutting Width: 400 mm
 Cutting Height: 25-75 mm
 Height Adjustment: 10
 Grass Catcher: 50 L



KK-LMP-6419

Rated Power: 3kW (4hp)
 Displacement: 135cc
 Engine Type: 4-Stroke
 Fuel: Petrol ; Speed: 2800 RPM
 Type of Operation: Self Propelled
 Fuel Tank Capacity: 1.2 L
 Cutting Width: 460 mm
 Cutting Height: 30-75 mm
 Height Adjustment: 7
 Grass Catcher: 60L

MANUAL RUN



KK-LMM-350

Cutting Width: 350 mm (14")
 Height Adjustment: 15-42 mm
 Grass Catcher (Plastic): 34 L
 Wheel Drive: 2



KK-LMM-400

Cutting Width: 400 mm (16")
 Height Adjustment: 15-42 mm
 Grass Catcher (Plastic): 34 L
 Wheel Drive: 2



KK-LMM-450

Cutting Width: 450 mm (18")
 Height Adjustment: 31-62 mm
 Grass Catcher: 10 L
 Wheel Drive: 4

HEDGE SHEAR



KK-AHS-2135

Telescopic
Blade Material: 65Mn Carbon Steel
Blade Length: 63 cm (25")
Blade Thickness: 4.3 mm
Hardness: 56 +/-2 HRC
Full Length: 79 cm (31")
Handle: Oval Steel
Grip: 1 Colour PVC

LOPPERS



KK-ALOP-2504

Telescopic
Blade Material: 50 Mn Carbon Steel
Blade Length: 27 cm (11")
Blade Thickness: 4.7 mm
Hardness: 50-52 deg
Full Length: 71 cm (28")
Handle: Oval Steel
Grip: 2 Color PP+TPR



KK-ALOP-3505

Telescopic
Blade Material: 65 Mn Carbon Steel
Blade Length: 27 cm (11")
Blade Thickness: 4.3 mm
Hardness: 56 +/-2 HRC
Full Length: 79 cm (31")
Handle: Oval Steel
Grip: 1 Colour PVC

PRUNING SAW



KK-AFS-JP02

Folding Pruning Saw
Material: Sk5 Japan Steel
Blade Length: 21 cm (8.3")
Blade Width: 3.5 cm (1.38")
Teeth: 3 Surface Automatic
Machine Grinding
Grip: Soft/Hard
Full Length: 43 cm (16.9")
Safety Lock: Yes

SHEEP SHEAR



KK-SS02

PRUNING SHEARS & SECATEURS



KK-APS-B1318
(Bypass Type)



KK-APS-A1215
(Anvil Type)



KK-APS-G05

GRAPE SHEAR



KK-TSP-525
+
KK-FPB-107

FRUIT PICKERS



KK-ATP-9210 (Manual)
Material: 50# Carbon Steel
Length/Thickness: 33 cm/ 2mm
Handle: Steel Telescopic
Hardness: 50 ± 2 HRC
Full Length: 1.2 - 2.4 m
Cutting Size: 25 mm

POLE PRUNNER

PRESSURE SPRAYERS (Models Available in: 1, 1.5, 2, 3, 5, 8L)



KK-TS1000
(Hand Operated)



KK-PS1000
(Hand Operated)



KK-PS1500
(Hand Operated)



KK-PS2000
(Hand Operated)



KK-PS3000



KK-PS5000



KK-PS8000

WATERING CANS (Models Available in: 1, 1.5, 2, 3, 5, 8L)



KK-MSP-6180
(1.80 Liters)



KK-MSP-6100
(0.90 Liters)



KK-MSP-6300
(3 Liters)

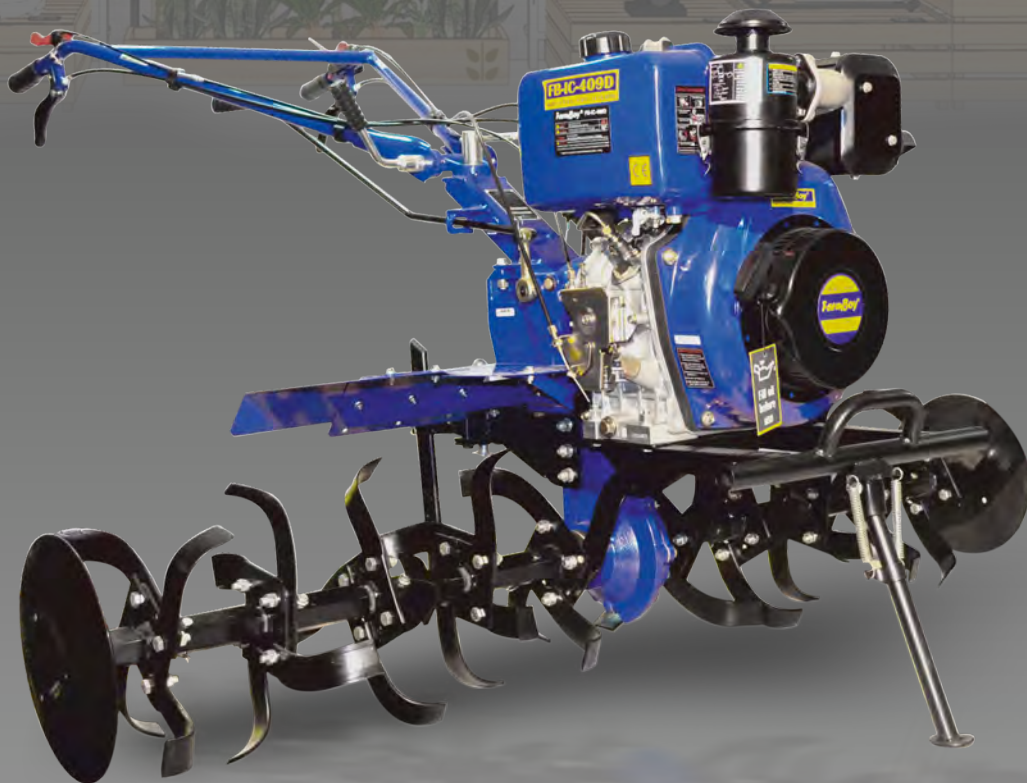
DISCLAIMER:

Pictures used are for illustration purpose only. Product specifications are subject to change without prior notice. Performance of machine may vary with User/field/Working conditions.

FarmBoy®

Economy Series by KisanKraft

FarmBoy®



INTER-CULTIVATORS



FB-IC-409D

Rated Power: 6.7 kW (9 hp)
Displacement: 406 cc
Speed: 3600 RPM
Number of Gears: 2 Fwd, 1 Rev
Cultivation Width: 80-135 cm
Cultivation Depth: 2.5-15.2 cm
Engine/Fuel: 4-Stroke/Diesel
Fuel Tank Capacity: 5.5 L



FB-IC-209P

Rated Power: 4.8 kW (6.5 hp)
Displacement: 196 cc
Speed: 3600 RPM
Number of Gears: 2 Fwd, 1 Rev
Cultivation Width: 90 cm
Cultivation Depth: 2.6-16 cm
Engine/Fuel: 4-Stroke/Petrol
Fuel Tank Capacity: 3.6 L

WATER PUMPS



FB-WPP-21

Rated Power: 3 kW (4 hp)
Inlet/Outlet (Dia): 50 mm(2")
Delivery (Horizontal): 30 m
Speed: 3600 RPM
Suction (Vertical): 8 m
Engine: 4-Stroke
Fuel Used: Petrol



FB-WPP-31

Rated Power: 4.3 kW (5.8 hp)
Inlet/Outlet (Dia): 80 mm(3")
Delivery (Horizontal): 30 m
Speed: 3600 RPM
Suction (Vertical): 8 m
Engine: 4-Stroke
Fuel Used: Petrol

ENGINE



FB-PE4-226

Rated Power: 5.1 kW (7 hp)
Displacement: 210 cc
Speed: 3600 RPM
Engine: 4-Stroke
Fuel Used: Petrol
Fuel Tank Capacity: 3.6 L



FB-KPS-204

Rated Power: 0.7 kW (1 hp)
Displacement: 31 cc
Speed: 7500 RPM
Engine/Fuel: 4-Stroke/Petrol
Suction Volume: 9 L/min
Chemical Tank Capacity: 20 L
Fuel Tank Capacity: 900 ml
Fuel Consumption: 500 ml/hr



FB-P764

Rated Power: 0.7 kW (1 hp)
Displacement: 26cc
Speed: 7500 RPM
Engine/Fuel: 4-Stroke/Petrol
Fuel Tank Capacity: 900 ml
Fuel Consumption: 500 ml/hr



FB-P768

Rated Power: 0.7 kW (1 hp)
Displacement: 26cc
Speed: 7500 RPM
Engine/Fuel: 2-Stroke/Petrol
Fuel Tank Capacity: 600 ml
Fuel Consumption: 500 ml/hr

POWER SPRAYERS

BRUSH CUTTERS



FB-SBC-8604

Rated Power: 1.0 kW (1.34 hp)
Displacement: 37.7 cc
Engine: 4-Stroke
Fuel Used: Petrol
Fuel Tank Capacity: 1 L



FB-BC-8648

Rated Power: 1.45 kW (1.94 hp)
Displacement: 51.7 cc
Engine: 2-Stroke
Fuel Used: Petrol
Fuel Tank Capacity: 1.2 L
Fuel Consumption: 800 ml/hr



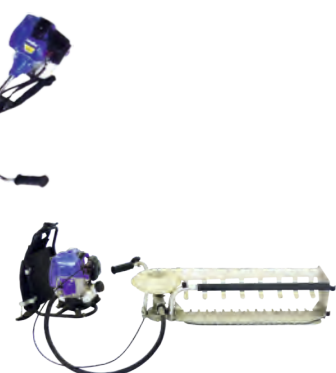
FB-BC-8652

Rated Power: 1.6 kW (2.2 hp)
Displacement: 52 cc
Engine: 2-Stroke, Air Cooled
Fuel Used: Petrol
Fuel Tank Capacity: 1.2 L
Fuel Consumption: 850 ml/hr



FB-BC-3504

Rated Power: 1.0 kW (1.35 hp)
Displacement: 37.7 cc
Engine: 4-Stroke
Fuel Used: Petrol
Fuel Tank Capacity: 1 L



FB-TH-602

Rated Power: 0.75 kW (1 hp)
Engine: 2-Stroke, Petrol
Displacement: 25.4 cc
Speed: 7500 RPM
Cutter Bar Length: 600mm

TEA LEAF HARVESTER

ANGLE GRINDERS

AY-PAG-100A

Volt/Freq.: 220 V/50 Hz
 Wheel/Hole Diameter: 100/16 mm
 Power: 750 W
 Speed: 11000 RPM


AY-PAG-101N

Volt/Freq.: 220 V/50 Hz
 Wheel/Hole Diameter: 100/115/125 mm
 Power: 850 W
 Speed: 11000 RPM


AY-PAG-101X

Volt/Freq.: 220 V/50 Hz
 Wheel/Hole Diameter: 100/115/125 mm
 Power: 850 W
 Speed: 11000 RPM


AY-PAG-125A

Volt/Freq.: 220 V/50 Hz
 Wheel/Hole Diameter: 125 mm / 22 mm
 Power: 1200 W
 Speed: 11800 RPM

MIXTURE DRILL

AY-PMD-950G

Volt/Freq.: 220 V ~ /50 Hz
 Power: 950 W
 Speed: 0-900 RPM
 Chuck Size: 120 mm


AY-PCV-035N

Volt/Freq.: 220 V/50 Hz
 Hose Dia: 35 mm
 Length: 1.5 Mtr
 Power: 650 W
 Speed: 4000 RPM


AY-PCV-353

Rated input power: 1200W
 Rated Voltage: 220-100 V
 No-Load Speed: 4000 RPM
 Hose Diameter: 38 mm
 Hose Length: 5 m

HEAVY DUTY
 FOR PROFESSIONAL USE

CONCRETE VIBRATOR ACCESSORIES

Also available with Petrol Engine


Motor - AY-ECV-30

Speed: 2840 RPM
 Rated Power: 1.5 kW (2 hp)
 Frequency: 50 Hz
 Voltage: 220 V | Ampere: 9.44 A


Frame

AY-EF-1


Coupling

AY-EH-B220


Needles (4 & 6 meter)

AY-CVN-3840
 AY-CVN-3860
 AY-ECVN-3841
 AY-ECVN-3861

DISCLAIMER:

Pictures used are for illustration purpose only. Product specifications are subject to change without prior notice. Performance of machine may vary with User/field/Working conditions.

MARBLE CUTTERS

AY-PMC-110A

Volt/Freq.: 220 V/50 Hz
 Disc Diameter: 110 mm
 Cutting Capacity: 34 mm
 Power: 1150 W
 Speed: 13300 RPM


AY-PMC-111N

Volt/Freq.: 220 V/50 Hz
 Blade Diameter: 110 mm
 Cutting Capacity: 30 mm
 Power: 1240 W
 Speed: 13000 RPM


AY-PMC-125N

Volt/Freq.: 220 V/50 Hz
 Blade Diameter: 125 mm
 Cutting Depth: 40 mm
 Angle: 0-45°
 Power: 1400 W
 Speed: 13000 RPM


AY-PCS-185N

Volt/Freq.: 220 V/50 Hz
 Blade Diameter: 185 -190 mm
 Cutting Depth: 64 mm
 Angle: 0-45°
 Power: 1400 W
 Speed: 5300 RPM

ELECTRIC JIG SAW

AY-JS-70G

Volt/Freq.: 220 V ~ /50 Hz
 Power: 710 W
 Speed: 0-3000 RPM
 Cutting Capacity: 70 mm


AY-JS-82G

Volt/Freq.: 220 V ~ /50 Hz
 Power: 650 W
 Speed: 0-3100 RPM
 Cutting Capacity: 85 mm


AY-PLN-820G

Volt/Freq.: 220 V/50 Hz
 Power: 710 W
 Speed: 16500 r/min
 Cutting Capacity: 82x2 mm


AY-ER-12G

Volt/Freq.: 220 V/50 Hz
 Power: 1800 W
 Speed: 0-23000 RPM
 Cutting Capacity: 8-12 mm

SCREW DRIVER

AY-SD-10G

Volt/Freq.: 220 V ~ /50 Hz
 Input Power: 400 W
 Speed: 0-1100 RPM
 Chuck Size: 10 mm

CORDLESS DRILL

AY-CD-12C

Battery: 1.3AH, 12V
 No Load Speed: 350-1300 RPM
 Steel/Wood Drill Capacity: 10/25mm
 Max Screwing Diameter: 7mm

HEAT GUN

AY-HG-2000G

Voltage: 220 V ~
 Frequency: 50 Hz
 Power: 2000 W

SPRAY GUN

AY-PSG-44G

Volt/Freq.: 220 V/50 Hz
 Cup Capacity: 600 cc
 Max Operating Pressure: 7.0 Bar
 Working Pressure: 26 Bar
 Speed: 16500 r/min

WALL CHASER

AY-WC-3300G

Volt/Freq.: 220 V-/50-60 Hz
 Power: 3000 W
 Max Load Power: 4300 W
 Speed: 5000 RPM
 Cutting Capacity: 42mm(W)/41mm(D)

ELECTRIC BLOWERS & VACUUMS

AY-ELB-600W

Volt / Frequency: 220V ~ /50 Hz
 Power: 600 W
 Gas Volume: 2.8 m³/ min
 Speed: 16000 RPM


AY-EB-40G

Volt / Frequency: 220V ~ /50 Hz
 Power: 580 W
 Gas Volume: 2.3m³
 Speed: 0-13000 RPM

VACUUM CLEANERS - Wet & Dry Brush

AY-VC-35L

Capacity: 35 L
 Power: 1500 V
 Double Stage Motor
 Voltage: 220 V / 50 HZ
 Vacuum Suction: 200 mbar
 Air Flow Rate: 53 L/S


AY-VC-80L

Capacity: 80 L
 Power: 4500 V
 Voltage: 220 V / 50 HZ
 Double Stage Motor | Triple Motor
 Vacuum Suction: 250 mbar
 Air Flow Rate: 120 L/S


AY-VC-100L

Capacity: 100 L
 Power: 4500 V
 Voltage: 220 V / 50 HZ
 Double Stage Motor | Triple Motor
 Vacuum Suction: 250 mbar
 Air Flow Rate: 120 L/S

AIR COMPRESSORS

AY-AC-30X

Air Flow: 178 L/Min
 Pressure: 8 Bar
 Piston: 42 mm
 Stroke: 35 mm
 Power: 1.5 hp
 Tank Size: 24 L
 Motor: Aluminium


AY-AC-50X

Air Flow: 195 L/Min
 Pressure: 8 Bar
 Piston: 47 mm
 Stroke: 35 mm
 Power: 2 hp
 Tank Size: 50 L
 Motor: Aluminium

DISCLAIMER:

Pictures used are for illustration purpose only. Product specifications are subject to change without prior notice. Performance of machine may vary with User/field/Working conditions.

IMPACT DRILLS

AY-PID-013N

Volt/Freq.: 220 V/50 Hz
 Drill: 13 mm Steel / 20 mm Wood
 Power: 600 W
 Speed: 1200 RPM


AY-PID-013G

Volt/Freq.: 220 V/50 Hz
 Drill: 13 mm
 Power: 750 W
 Speed: 2800 RPM


AY-PID-010G

Volt/Freq.: 220 V/50 Hz
 Drill: 10 mm
 Power: 350 W
 Speed: 4500 RPM


AY-PID-065G

Volt/Freq.: 220 V/50 Hz
 Drill: 6.5 mm
 Power: 350 W
 Speed: 4500 RPM

ROTARY HAMMERS

AY-PHD-020A

Volt/Freq.: 220 V/50 Hz
 Drill: 20 mm
 Power: 500 W
 Speed: 850 RPM


AY-PHD-026N

Volt/Freq.: 220 V/50 Hz
 Drill: 26 mm
 Power: 750 W
 Speed: 500 RPM

CUT-OFF MACHINES

AY-PCO-355C

Volt/Freq.: 220 V/50 Hz
 Wheel Diameter: 355 mm
 Power: 1800 W
 Speed: 3800 RPM

HEAVY DUTY
 FOR PROFESSIONAL USE

AY-PCO-335X

Volt/Freq.: 220 V/50 Hz
 Wheel Diameter: 355 mm
 Power: 2600 W
 Speed: 3800 RPM


AY-PCO-355A

Volt/Freq.: 220 V/50 Hz
 Wheel Diameter: 355 mm
 Power: 2100 W
 Speed: 3900 RPM


AY-PCO-355B

Volt/Freq.: 220 V/50 Hz
 Wheel Diameter: 355 mm
 Power: 2200 W
 Speed: 3800 RPM

DEMOLITION HAMMERS

AY-PDH-11E

Volt/Freq.: 220 V - /50 Hz
 Impact Energy: 6-25 Joules
 Impacts/Min: 0-1300
 Capacity: 11 Kg
 Power: 1500 W


AY-PDH-840N

Volt/Freq.: 220 V/50 Hz
 Impact Energy: 10 Joules
 Impacts/Min: 3500
 Capacity: 7 Kg
 Power: 1100 W


AY-DM-65G

Volt/Freq.: 220 V - /50 Hz
 Cylinder Dia: 45 mm
 Capacity: 16 Kg
 Power: 1650 W

ARC WELDING MACHINES (IGBT)

AY-WM-200(MINI)

Rated Voltage: 220 V
 (Single Phase)
 Single PCB IGBT Inverter
 IGBT: 40N60*2 pcs
 Output Diode: D92*2 pcs
 Capacitor: 300UF/400V*2 pcs


AY-WM-200A

Rated Voltage: 220 V
 (Single Phase)
 Single PCB IGBT Inverter
 IGBT: 40N60*2 pcs
 Output Diode: D92-02*3 pcs
 Capacitor: 330UF/400V*3 pcs


AY-WM-250A

Rated Voltage: 220 V
 (Single Phase)
 Single PCB IGBT Inverter
 IGBT: 60N60*2 pcs
 Output Diode: 60F30 *3 pcs
 Capacitor: 330UF/400V*3 pcs


AY-WM-275A

Rated Voltage: 220 V
 (Single Phase)
 Single PCB IGBT Inverter
 IGBT: 40N60*4 pcs
 Output Diode: 60F30 *3 pcs
 Capacitor: 390UF/400V*3 pcs


AY-WM-300A

Input Voltage: 220 V
 (Single Phase)
 Single PCB IGBT Inverter
 IGBT: 60A/600 V*4 pcs
 Output Diode: 60A/300V *4 pcs
 Capacitor: 470UF/400V*6pcs
 with MCB, 2 Knobs


AY-WM-400MIG

IGBT 50A/1200V*2 PCS
 Diode FFA60UP30DN*8 PCS
 Earth clamp with 2.5M Cable
 Electrode Holder
 with 2.5M Cable (35mm2)
 Torch MB36KD Euro Connector
 AC36V Regulator
 Phase: Three Phase


AY-WM-200MA (MOSFET)

Input Voltage: 220 V (Single Phase)
 Top Card: 18N50 *12 pcs
 Middle Card: D92M-02*12 pcs
 Transformer: *3 pcs
 Bottom Card Capacitor: 470UF/400V
 *4 pcs, 1 pcs 35A
 Bridge Diode with Heatsink, NTC


AY-WMH-333

Power: AC 220 V (±15%)
 Frequency: 50/60Hz
 Input Current: 18 A
 Phase: 1 PH
 Rated Input: 3.9 A
 Amperage Range: 20-120 A
 Open Circuit Voltage: 24.8 V

DISCLAIMER:

Pictures used are for illustration purpose only. Product specifications are subject to change without prior notice. Performance of machine may vary with User/field/Working conditions.

PORTABLE PRESSURE WASH SPRAYERS

AY-PWIH-060

Motive Power: 1.3 kW (1.74 hp)
 Power Supply: 220 V
 Rotating Speed: 2800 RPM
 Motor Type: Induction
 Max Pressure: 100 Bar
 Theoretical Flow: 10 L/Min


AY-PWIH-888

Motive Power: 2.6 kW (3.48 hp)
 Power Supply: 220 V / 50Hz
 Rotating Speed: 2800 RPM
 Max Pressure: 150 Bar
 Theoretical Flow: 10 L/Min


AY-PWIH-1880

Motive Power: 2.5 kW (3.35 hp)
 Power Supply: 220 V
 Rotating Speed: 2800 RPM
 Motor Type: Copper Type
 Max Pressure: 150 Bar
 Output Capacity: 10 L/Min


AY-PW-818

(High Pressure)
 Volt/Freq.: 220 V/50 Hz
 Input Power: 1800 W
 Speed: 0-23000 RPM


KK-PWCB-105

Rated Power: 1650 W
 Input Power: 230 V(50 Hz)
 Motor Type: Carbon-Brush
 Maximum Pressure: 10.5 MPa
 Cleaning Pressure: 7 MPa
 Output Capacity: 5 L/Min


KK-PWCB-130

Rated Power: 1850 W
 Input Power: 230 V(50 Hz)
 Motor Type: Carbon-Brush
 Maximum Pressure: 13.5 MPa
 Cleaning Pressure: 9 MPa
 Output Capacity: 5.7 L/Min


KK-PWIM-110

Rated Power: 1800 W
 Input Power: 230 V(50 Hz)
 Motor Type: Induction
 Maximum Pressure: 16.5 MPa
 Cleaning Pressure: 11 MPa
 Output Capacity: 5.5 L/min


KK-PWIN-135

Rated Power: 1500 W
 Input Power: 230 V(50 Hz)
 Motor Type: Induction
 Maximum Pressure: 13.5 MPa
 Cleaning Pressure : 9 MPa
 Output Capacity: 6 L/min


KK-PWIN-165

Rated Power: 1800 W
 Input Power: 230 V(50 Hz)
 Motor Type: Induction
 Maximum Pressure: 16.5 MPa
 Cleaning Pressure: 11 MPa
 Output Capacity: 6 L/min


AY-PWIM-007

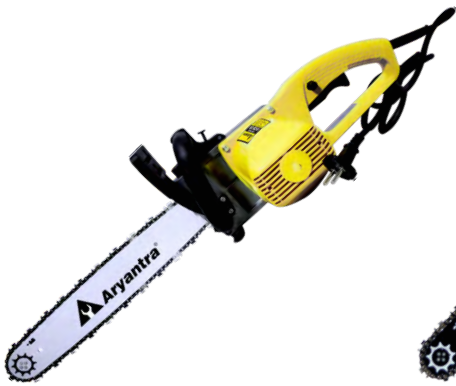
Rated Power: 2500 W
 Input Power: 230V(50Hz)
 Motor Type: Induction
 Maximum Pressure: 19.5 MPa
 Cleaning Pressure : 13 MPa
 Output Capacity: 6.5 L/min


AY-PWIH-2200

Motive Power: 2.2 kW (2.95 hp)
 Power Supply: 220 V
 Rotating Speed: 2800 RPM
 Motor Type: Copper Motor
 Max Pressure: 180 Bar
 Output Capacity: 13.7 L/min


AY-PWIM-3900

Motive Power: 7.5 kW (10 hp)
 Power Supply: 380 V / 50 Hz
 Rotating Speed: 1440 RPM
 Motor Type: Copper Motor
 Max Pressure: 300 Bar
 Output Capacity: 16.7 L/Min
 Phase: Three Phase

CHAINSAWS

AY-CSE-1316 (Electric)

Rated Power: 1300 W
 Speed: 400 m/min
 Length of Bar: 16 Inches
 Power: Electric


AY-CSP-6118

Rated Power: 2.2 kW (2.95 hp)
 Displacement: 58 cc
 Max Speed: 10000 RPM
 Engine/Fuel: 2-Stroke/Petrol
 Chain: Semi Chisel
 Bar Size: 18 Inches
 Fuel Tank Capacity: 550 ml
 Fuel Consumption: 1500 ml/hr


AY-CSP-6120

Rated Power: 2.2 kW (2.95 hp)
 Displacement: 58 cc
 Max Speed: 10000 RPM
 Engine/Fuel: 2-Stroke/Petrol
 Chain: Semi Chisel
 Bar Size: 20 Inches
 Fuel Tank Capacity: 550 ml
 Fuel Consumption: 1500 ml/hr


AY-CSP-6122

Rated Power: 2.2 kW (2.95 hp)
 Displacement: 58 cc
 Max Speed: 10000 RPM
 Engine/Fuel: 2-Stroke/Petrol
 Chain: Semi Chisel
 Bar Size: 18 Inches
 Fuel Tank Capacity: 550 ml
 Fuel Consumption: 1500 ml/hr


AY-CSP-6218

Rated Power: 2.5 kW (3.35 hp)
 Displacement: 58 cc
 Max Speed: 12000 RPM
 Bar Size: 18 Inches


AY-CSP-6222

Rated Power: 2.5 kW (3.35 hp)
 Displacement: 58 cc
 Max Speed: 12000 RPM
 Bar Size: 22 Inches


AY-CSP-676

Rated Power: 2.3 Kw (3.084 hp)
 Displacement: 55 cc
 Max Speed: 11100 RPM
 Bar Size: 18 Inches


AY-CSP-787

Rated Power: 2.8 kW (3.75 hp)
 Displacement: 54.5 cc
 Max Speed: 13200 RPM
 Bar Size: 18 Inches


KK-CSP-5720

Walbro Carburetor
 Rated Power: 2.2 kW (2.95 hp)
 Displacement: 50.8 cc
 Speed: 9000 RPM
 Engine/Fuel: Petrol
 Chain: Full Chisel (Oregon Chain)
 Length of Bar: 51 cm (20")
 Fuel Tank Capacity: 540 ml
 Fuel Consumption: 1200 ml/hr


KK-CSP-5920 **FMTTI**

Rated Power: 2.8 kW
 Displacement: 56.5 cc
 Speed: 8500 RPM
 Engine/Fuel: 2-Stroke/Petrol
 Chain: Full Chisel (Oregon Chain)
 Length of Bar: 510 mm
 Fuel Tank Capacity: 0.450L
 Fuel Consumption: 1.05 L/hr


KK-CSP-8650

Walbro Carburetor
 Rated Power: 2.2 kW (3 hp)
 Displacement: 50 cc; Speed: 9000 RPM
 Engine/Fuel: 2-Stroke/Petrol
 Chain: Full Chisel (Oregon Chain)
 Length of Bar: 46 cm (18")
 Fuel Tank Capacity: 600 ml
 Fuel Consumption: 1500 ml/hr
 Oil Tank Capacity: 260 ml

DISCLAIMER:

Pictures used are for illustration purpose only. Product specifications are subject to change without prior notice. Performance of machine may vary with User/field/Working conditions.

TCT BLADES

Available Sizes:

110 x 20 mm: 30 Teeth
 127 x 20 mm: 30 Teeth
 110 x 20 mm: 40 Teeth
 127 x 20 mm: 40 Teeth

CUTTING BLADES

Available Grits:

36 Grits
 46 Grits
 60 Grits
 80 Grits

WA WHEELS

Available Grits:

36 Grits
 46 Grits
 60 Grits
 80 Grits

DC GRINDING WHEEL

Available Sizes:

100 x 6 x 16 mm
 125 x 6 x 16 mm
 125 x 6 x 22.2 mm

CUP WHEELS

Available Sizes:

80 mm (SEGMENTED)
 80 mm (RIM)

FLAP DISCS

Available Grits:

60 Grits
 80 Grits
 20 Grits

FIBRE DISCS

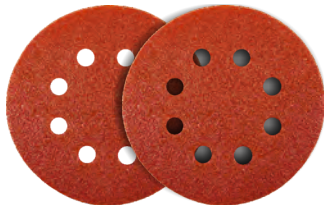
Available Grits:

36 Grits
 60 Grits
 80 Grits
 100 Grits
 120 Grits

NON-WOVEN PADS

Available Sizes:

100 mm, U3
 100 mm, U5

SAND PAPER WITH VELCRO

Available Grits:

40 Grits
 60 Grits
 80 Grits
 100 Grits
 120 Grits

CUT-OFF WHEEL

Available Sizes:

355 x 1.8 x 25.4 mm
 355 x 2.5 x 25.4 mm
 107 x 1.0 x 16 mm
 107 x 1.5 x 16 mm
 107 x 1.3 x 16 mm
 125 x 1.3 x 22 mm
 125 x 1.5 x 22 mm

DRILL BITS

Available Sizes:

10 x 160 mm	6.5 x 110 mm
12 x 160 mm	8 x 160 mm
5 x 110 mm	8 x 110 mm
6 x 110 mm	6.5 x 160 mm
6 x 160 mm	

REGIONAL OFFICES



HO: Bangalore (Karnataka)

Sri Huchhanna Tower # 4, 1st Main,
7-A Cross, Maruthi Layout, Dasarahalli,
HAF Post, Hebbal, Bengaluru 560 024,
Karnataka
Phone: 080 6835 7800
Email: info@kisankraft.com
GSTIN: 29AACCK6445J1Z6



FAC: Nellore (Andhra Pradesh)

818 3B1 to 818 3B18,
Podalakur - Sangam Road, Prabagiripatnam,
Podalakur, Nellore - 524345,
Andhra Pradesh, INDIA
Phone: 080 6835 7800
Email: info@kisankraft.com
GSTIN: 37AACCK6445J1Z9



Ahmedabad (Gujarat)

G-11, Karnavati Estate,
Sarkhej - Sanand Road, Besides Hotel
Orange Inn, Ahemadabad-382210
Phone: +91 92280 00760
Email: info.ahmedabad@kisankraft.com
GSTIN: 24AACCK6445J1ZG



Bhopal (Madhya Pradesh)

Shed #1, Near C-21 Mall,
Hoshangabad Road,
Bhopal - 462026, MP
Phone: +91 70242 11678
Email: info.bhopal@kisankraft.com
GSTIN: 23AACCK6445J1Z1



Bhubaneswar (Odisha)

Plot No. 2509, Near Toyota Showroom,
Nuagada, PO-Telengapentha, PS-Banapur,
Cuttack, Sadar - 753011, Odisha
Phone: +91 81143 77757/ 58/ 59
Email: info.bhubaneswar@kisankraft.com
GSTIN: 21AACCK6445J1ZM



Coimbatore (Tamil Nadu)

291/7, Kothari Nagar, MTP Road,
Opp. Sai Hospital, Vadamadurai Post,
Coimbatore - 641017, Tamil Nadu
Phone: 0422 2460 199, 75581 16333
Email: info.coimbatore@kisankraft.com
GSTIN: 33AACCK6445J1ZH



Guwahati (Assam)

Ground Floor, Word No. 06, Near
LP School, Paschim, Boragaon Post,
Kamrup, Guwahati - 781033, Assam
Phone: +91 98300 39150
Email: info.guwahati@kisankraft.com
GSTIN: 18AACCK6445J1Z9



Hubli (Karnataka)

LG-2, Akshay Enclave, Kusugal Road
Keshwapur, Hubli - 580 023, Karnataka
Phone: 0836 2287877, +91 96321 62929
Email: info.hubli@kisankraft.com
GSTIN: 29AACCK6445J1Z6



Hyderabad (Telangana)

Plot No. 7, H No. 5-5-35/234,
Shaktipeetam, Prashantinagar, I.D.A,
Kukatpalli, Hyderabad 500 072, Telangana
Phone: 040 4025 0114, +91 91333 80186
Email: info.hyderabad@kisankraft.com
GSTIN: 36AACCK6445J1ZB



Jaipur (Rajasthan)

No. 69-A, Sudershanpura Industrial
Area, Bais Godam, Jaipur 302 006,
Rajasthan
Phone: 0141 2219 128
Email: info.jaipur@kisankraft.com
GSTIN: 08AACCK6445J1ZA



Karnal (Haryana)

General and Allied Industries,
Near Shani Mandir, Bypass GT Road,
Karnal 132 001, Haryana
Phone: +91 70822 18207
Email: info.karnal@kisankraft.com
GSTIN: 06AACCK6445J1ZE



Kolkata (West Bengal)

Sadananda Ind. Estate, Dag No. 1183,
Mouza-Balitikuri & Dag No.1504,
Dharsa-Balitikuri, Bakkultala,
Howrah 711 113, West Bengal
Phone: +91 62921 59652
Email: info.kolkata@kisankraft.com
GSTIN: 19AACCK6445J1Z7



Lucknow (Uttar Pradesh)

Plot No. E-45, Phase-2, Transport
Nagar, Kanpur Road,
Lucknow 226 012, Uttar Pradesh
Phone: +91 95175 11174
Email: info.lucknow@kisankraft.com
GSTIN: 09AACCK6445J1Z8



Pune (Maharashtra)

Survey no. 46 Hissa no.1A/2 and survey no.47
Hissa no.2/2, Uruli Devachi, Pune: 412308
Maharashtra
Phone: +91 84829 75446
Email: info.pune@kisankraft.com
GSTIN: 27AACCK6445J1ZA



Raipur (Chhattisgarh)

Block No. 5, Plot No. W1A-04, Dr. Khoob
Chand Baghel, Transport Nagar,
Rawabhata Raipur 492 010, Chhattisgarh
Phone: +91 91099 98071
Email: info.raipur@kisankraft.com
GSTIN: 22AACCK6445J1ZK

OUR REGIONAL OFFICES TO SUPPORT OUR PAN-INDIA DEALER NETWORK



Scan the QR code to
download the app



Available on



Download the KisanKraft app to
Buy | Rent | Learn | Earn

Follow us on



KisanKraft Limited

(Registered office) Sri Huchhanna Tower # 4, 1st Main, 7-A Cross, Maruthi Layout, Dasarahalli, HAF Post, Hebbal, Bengaluru 560 024, Karnataka, INDIA, (CIN: U29220KA2005PLC066051)

(Factory) 818 3B1 To 818 3B18, Podalakur - Sangam Road, Prabagiripatnam, Podalakur Nellore - 524345, Andhra Pradesh, INDIA

Customer Care: 080 6835 7800, Missed Call: 076760 65555
Web: www.kisankraft.com, Email: info@kisankraft.com