

COMPREHENSIVE
ARCHITECTURAL SOLUTIONS

 **TAITON**[®]



Edition #8

www.taiton.in



ABOUT US

The World of TAITON provides you with the Largest and most Comprehensive product range which has been intelligently crafted to suit the modern Hi-tech commercial and residential establishments. We have a rich tradition of manufacturing and distributing high Quality Architectural Hardware which meets and exceeds expectations.

The tradition has inspired us to foray into diverse fields of premium & exclusive products to decorate your interior spaces. Our diversified product portfolio is strategically divided into 9 verticals. In the current dynamic world infrastructural development is witnessing the rapid advancement, hence, there is a requirement to continuously innovate the products utilizing latest technologies to offer solutions that match perfectly to the need of modern customers.

Being a Quality conscious firm, we never compromise with Quality of our products. For that, we conduct an elaborate research on the materials to be used and the prevailing market trends. We ensure that our products undergo strict quality checks on various parameters like durability, finishing and robustness before they are delivered to our customers.

TAITON will keep challenging itself in the new era, dedicating to supply more beautiful and high quality products for a better living. We offer prompt & courteous delivery of our products and efficient customer service.

Exceptional functional & technical expertise coupled with extensive industry knowledge makes TAITON the ideal choice for implementation of your desires into reality.

THE WORLD OF TAITON

GLASS HARDWARE



Glass Facade Hardware

DOOR CONTROL HARDWARE



Wooden & Metal Door Hardware

AUTOMATICS



Automatic Doors

TAVIC
COMPREHENSIVE PARTITION SOLUTIONS



Wardrobe & Slim Partitions

maxia



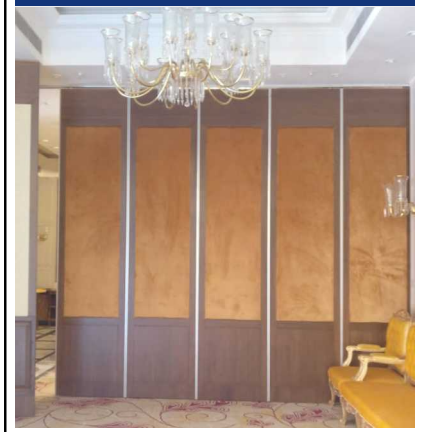
Luxury Shower Cubicles

ELECTRONIC LOCKS



Hotel RFID & Digital Locks

MOVABLE PARTITIONS



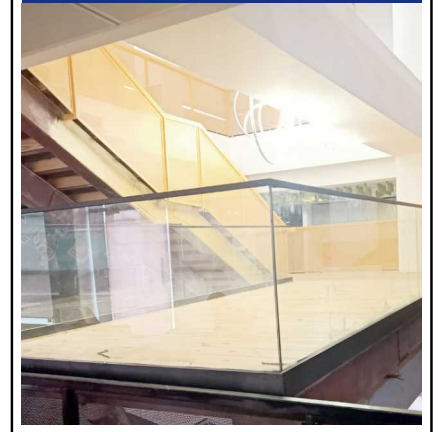
Acoustic & Glass Movable Partitions

SMART SWITCH FILM



Switchable Privacy Film

RAILINGS



Stainless Steel & Aluminium Railings

INDEX

	PAGES
Patch Fittings	01-03
Door Handles	04-05
Wall Connecting Profile & Door Rails	06
Office Partition Hardware	07
Shower Cubicle Fittings	08-12
Sliding Door Systems	13-15
Spider Fittings	16-21
Sliding Folding Systems	22-26
Telescopic Sliding Frame / Frame less Glass Door	27-29
TAITON MAXIA – Exclusive Luxury Shower Cubicles	30-38
Automatic Sliding Doors, Panic Breakout Door	39-42
Automatic Swing Doors	43-44
Automatic Curved Sliding Door	45
Revolving Doors & Hand Sensor	46
Motion Sensor & Auto Door Accessories	47-48
RFID Card Locks	49-50
Elevator Control & DND System	51
Digital Glass Door Locks	52
Digital Biometric Door Locks & Drawer Locks	53-54
Acoustic & Glass Movable Partitions	55-56
Door Control Hardware	57-60
Floor Springs	61
Door Closers	62
Wardrobe Sliding Systems	63-65
Railings	66-69
Smart Switch Film	70

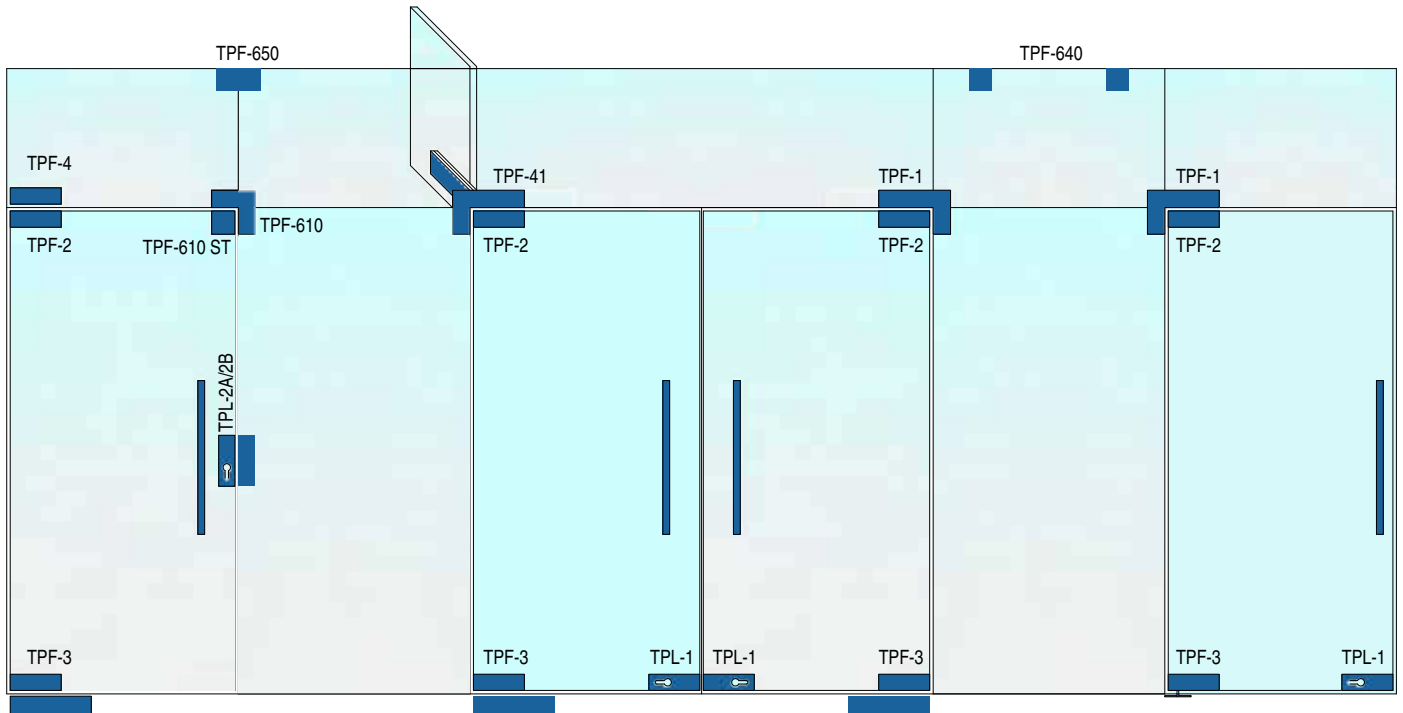


PATCH FITTINGS

TAITON features the finest and most comprehensive range of patch fittings to meet the aesthetic as well as the functional requirement of the space. These not only make the facades look visually appealing but also provide the strength to the façade.

Made from heavy duty materials, the patch fittings are available in various finishes to match with the interiors. These patch fittings are suitable for glass thickness 8-12mm and manufactured as per international standards for quality, stability and safety.





SSS
 BM
 GP
 RGP

MATERIAL: SS 304

PREMIUM SERIES



TPF-1
Over Panel Side Panel
Connecting Patch with Pivot



TPF-2
Top Patch



TPF-3
Bottom Patch



TPF-4
Wall Mounted Over Panel Patch with
Pivot



TPF-610
Over Panel Side Panel Connector



TPF-610 R/L
Triple Glass Connector with Fin (Right/Left)



TPF-610-ST
Over Panel Side Panel Connector with
Stopper (One side opening of door)



TPF-620
Quadruple Connector



TPF-630 F
Double Glass Connector with Fin

PATCH FITTINGS



TPF-640
Wall to Glass Clamping Patch



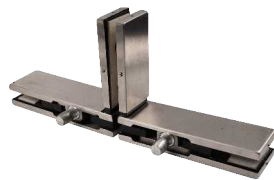
TPF-650
Glass to Glass Connecting Patch to Wall/Ceiling



TPF-660
Glass to Glass Connector



TPF-41 R/L
Over Panel Side Panel Connector with Fin (Right/Left)



TPF-51
Over Panel Connector for Back to Back Doors



TFS-ACC-GDP
Top Pivot for Patch/Point Fitting Doors

Finishes Available



Satin



Black Matte



Gold



Rose Gold

PATCH LOCKS



TPL-1
Corner Patch Lock with Strike Plate



TPL-2A



TPL-2B

Center Patch Lock with Strike Box

• Key Outside & Knob Inside



TPL-3A/3B
Glass Door Lock with Strike Box

• Key Outside & Knob Inside



TPL-3A
Glass Door Lock with Strike Plate



TPL-4A-N-S



TPL-4A/4B-N

Glass Door Lock with Strike Plate/Box (Without Cutout)



TPL-TL

TPL-TL-SB

Thumb Turn Lock with Strike Plate/Box (Without Cutout)

POINT FIXED GLASS CONNECTORS



TSSPL-SDL-G
Sliding Door Lock With Claw Type Dead Bolt & Strike Box



TSSPL-SDL
Sliding Door Lock With Claw Type Dead Bolt & Strike Plate



TPF-GC-3
Wall to Glass Connector

DOOR HANDLES

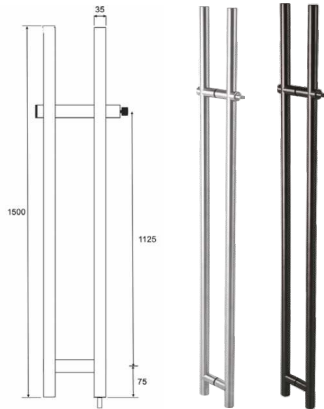
TGH-11
D Type Handle


Product Code (Size in mm)	Handle Diameter	Center to Center of Hole	Overall Length of Handle
TGH-11 19x152x171mm	19mm	152mm	171mm
TGH-11 19x250x269mm	19mm	250mm	269mm
TGH-11 25x300x325mm	25mm	300mm	325mm
TGH-11 25x425x450mm	25mm	425mm	450mm
TGH-11 32x568x600mm	32mm	568mm	600mm

TGH-55
H Type Handle


Product Code (Size in mm)	Handle Diameter	Center to Center of Hole	Overall Length of Handle
TGH-55 25x250x300mm	25mm	250mm	300mm
TGH-55 25x302x450mm-a	25mm	302mm	450mm
TGH-55 25x350x450mm-b	25mm	350mm	450mm
TGH-55 32x302x450mm	32mm	302mm	450mm
TGH-55 32x450x600mm-a	32mm	450mm	600mm
TGH-55 32x480x600mm-b	32mm	480mm	600mm
TGH-55 32x600x900mm-a	32mm	600mm	900mm
TGH-55 32x700x900mm-b	32mm	700mm	900mm
TGH-55 32x1100x1300mm	32mm	1100mm	1300mm

DOOR HANDLES



TGHL-55
Glass Door Handle with Integral Lock

Handle Diameter	Center to Center of Hole	Overall Length of Handle
35mm	1125mm	1500mm
35mm	1125mm	1500mm



TGH-552-ED
Glass Door Handle

Handle Section	Center to Center of Hole	Overall Length of Handle
40mmx10mm	298mm	450mm
40mmx10mm	450mm	600mm



TGH-554-ED
Glass Door Handle

Handle Section	Center to Center of Hole	Overall Length of Handle
20mmx40mm	380mm	400mm
20mmx40mm	780mm	800mm



TGH-664
Hole to Hole Adjustable Handle

Handle Diameter	Center to Center of Hole	Overall Length of Handle
32mm	300-800mm	900mm



TGH-11-D
Offset Handle



TGH-11-D-BM
Offset Handle

Handle Diameter	Center to Center of Hole	Overall Length of Handle
25mm	300mm	325mm
25mm	450mm	475mm
25mm	600mm	625mm



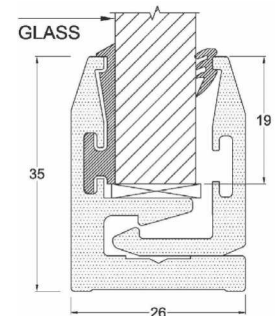
WALL CONNECTING PROFILE SYSTEM



TGL-WCP-22

Features:

- Attached with ceiling, floor or wall
- Available in lengths of 2mtr, 3mtr & 4mtr
- Available for 8mm, 10mm & 12mm Glass
- Does not require any glass preparation
- Easy and simple installation of the glass
- Low maintenance cost
- End Cap for better aesthetics
- Gaskets Included. Please specify glass thk while ordering



GLASS DOOR RAILS

Features:

- Easy to Install
- Quick Door Assembly
- Pre Installed Hardware
- End Cap for Better Aesthetics
- Removable Clip on SS Covers
- Firm Grip with Glass
- For Glass Thickness 10 & 12mm



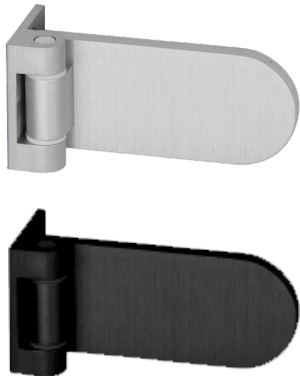
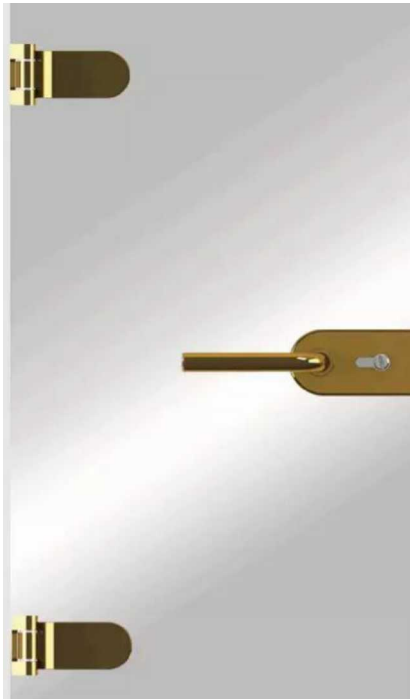
TDR-1

Top Rail (Available in 1mtr & 1.2mtr Length)



TDR-2

Bottom Rail (Available in 1mtr & 1.2mtr Length)



TAGH-1
Wall to Glass 90°
Aluminium Door Hinge
for Door Weight = 45kg



TAGL-11-SB
Strike Box for D Type
Glass Door Lock



TAGHL-11-SET
Lock & Handle Set
Available in K2K & K2N



K2N

K2K



TAGHL-33-SET
Lock & Handle Set
Available in K2K & K2N



K2N

K2K



SHOWER CUBICLE FITTINGS

Taiton features standard range of shower cubicle fittings such as shower hinges, shower screen brackets & connectors, towel bar handles, knight head accessories & plastic profiles.

Shower hinges are available in SS 304 in various finishes to be selected from as per taste.

Glass connectors are available in SS 304 Grade.

Shower cubicle fittings are suitable for glass thickness 8mm & 10mm.



SHOWER FITTINGS



SHOWER HINGES



MATERIAL: SS 304



TSH-1
Wall to Glass Hinge



TSH-OFS-1
Wall to Glass Offset Hinge



TSH-2
Glass to Glass Hinge 180°

Finishes Available



Satin Polish



Black Matte Gold

Rose Gold available against order



TSH-2T
Double Action 3-Way 'T' Hinge



TSH-3
Glass to Glass Hinge 135°



TSH-4
Glass to Glass Hinge 90°



TSH-5
Wall to Glass Bracket

GLASS CONNECTORS



MATERIAL: SS 304



TGC-1
Glass Connector for
Wall / Floor Mounting



TGC-2
Glass to Glass Connector 135°



TGC-3
Glass to Glass Connector 90°

Finishes Available



Satin Polish



Black Matte Gold

Rose Gold available against order

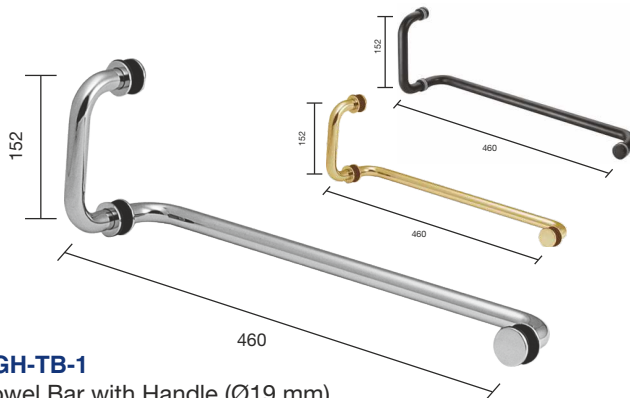


TGC-4
Wall to Glass Connector 90°

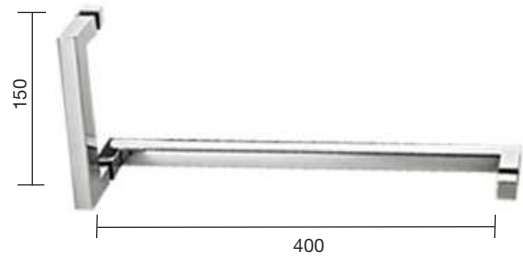


TGC-5
Glass to Glass Connector 180°

TOWEL BAR HANDLES



TGH-TB-1
Towel Bar with Handle (Ø19 mm)

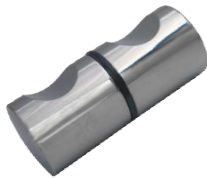


TGH-TB-ED
Towel Bar with Handle (20x20mm)

DOOR KNOBS



MATERIAL: SS 304



TDK-1
Glass Door Knob



TDK-2
Glass Door Knob

SHOWER KNIGHT HEAD ACCESSORIES



TSKH-1
Reinforcing Rod
With Wall Connector



TSKH-2
Reinforcing Rod Support
from Glass Through and Through



TSKH-2A
Reinforcing Rod Support from
Glass One Side Blind



TSKH-3
Reinforcing Rod Connector Universal



TSKH-4
Rod to Rod 'T' Connector



TSKH-ACC-19
Reinforcing Rod 19 mm Diameter
(Available in 2mtr & 3mtr)

EDGE LINE KNIGHT HEAD ACCESSORIES



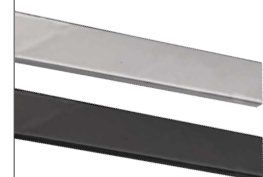
TSSKH-1-ED
Wall to Track Connector



TSSKH-2-ED
Track to Glass Connector



TSSKH-3-ED
Glass to Track end Connector
Track to Track 90° Connector

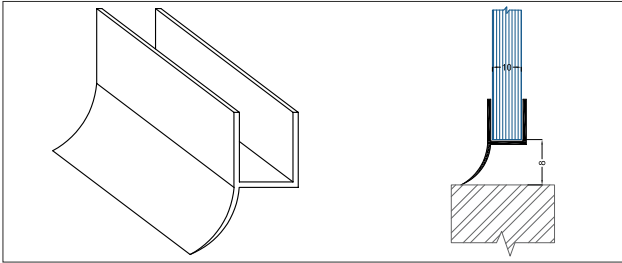


TSL-11-TRACK
Track Available in
2mtr & 3mtr

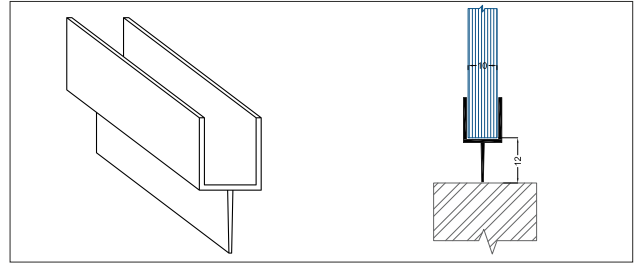
PLASTIC PROFILES

 PVC
  BM

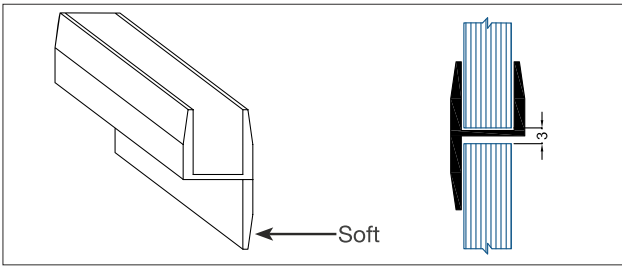
Available for 8, 10 & 12mm Glass
Standard Length: 2.2mtr & 2.4mtr



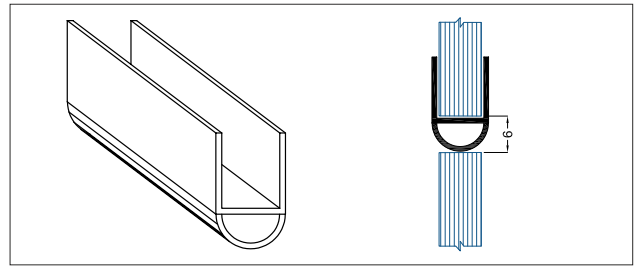
TPS-1
Wall Seal



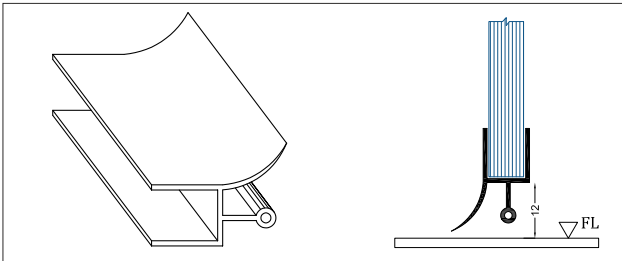
TPS-2
Central Seal



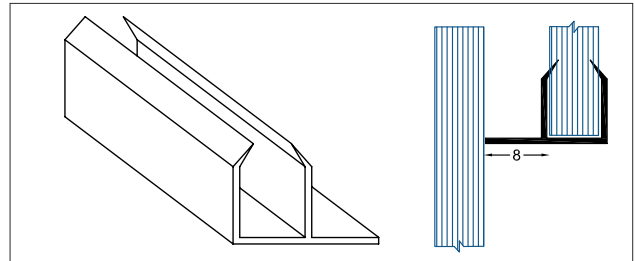
TPS-3 (Soft)
Central 180° Weather Seal



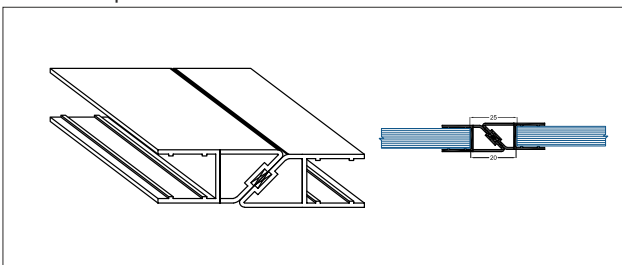
TPS-4
Central 180° Weather Seal



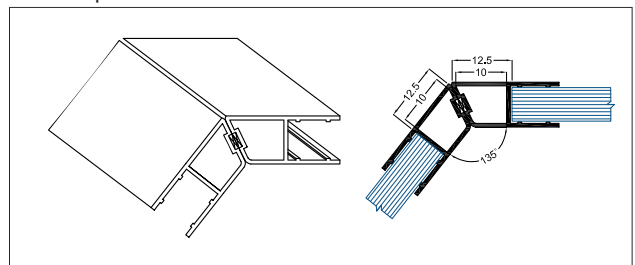
TPS-7
Water Dispersal Seal



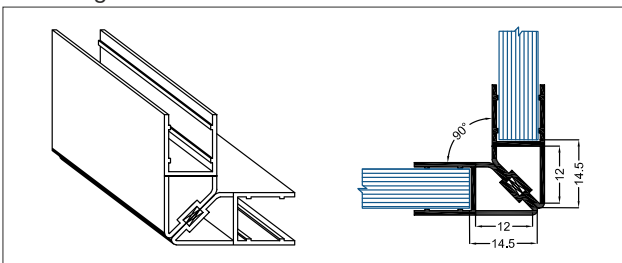
TPS-9
Offset Lip Seal



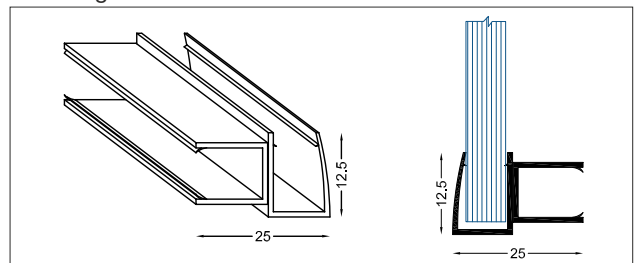
TPS-M1
180° Magnetic Seal



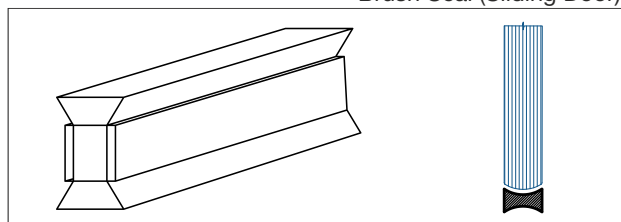
TPS-M2
135° Magnetic Seal



TPS-M3
90° Magnetic Seal



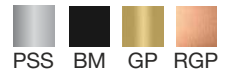
TPS-SL-BR-11
Brush Seal (Sliding Door)



ECONOMY SLIDING SHOWER SCREEN



ECONOMY SLIDING SHOWER SCREEN



(BM, GP and RGP available on demand)



TESL-SS-KIT
Single Door Sliding System wheel kit



TESL-SS-90-CNTR
90° Connector



TESL-SS-180-TRACK
(Available in 1.6mtr, 2mtr & 3mt)
Single Door



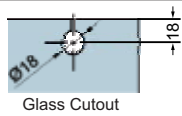
Double Door 90°

SPECIFICATIONS:

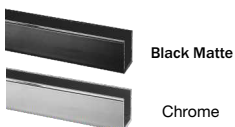
- Maximum Door Weight: 55kg
- Maximum Door Height: 2100mm
- Maximum Door Width: 800mm
- Suitable Glass Thickness: 8 & 10mm

COMPONENT DETAILS

PART LIST		SINGLE DOOR	DOUBLE DOOR 90°
	Aluminium Top Track Finish: Chrome	2 & 3mtr Length	1.65 mtr - 2 Length
	Track Corner Joint Finish: Chrome (for Corner Entry System)	N.A.	1 pc.
	Ø35 Stainless Steel Knob Clamp Roller Finish: Polished or Satin Stainless Steel *Suits 8-10mm Glass Thickness	2 pcs.	4 pcs.
	Nylon End Stopper	2 pcs.	4 pcs.
	Stainless Steel Mounting Bracket (LH/RH) Finish: Polished Stainless Steel	1 Set (1 LH & 1 RH)	1 Set (1 LH & 1 RH)
	Single-U Nylon Floor Guide	1 pc.	2 pcs.



OPTIONAL ACCESSORIES



TGL-UPR
Al. U Channel
19 x 25 x 2400mm



TSL-HN-50
Sliding Door Handle



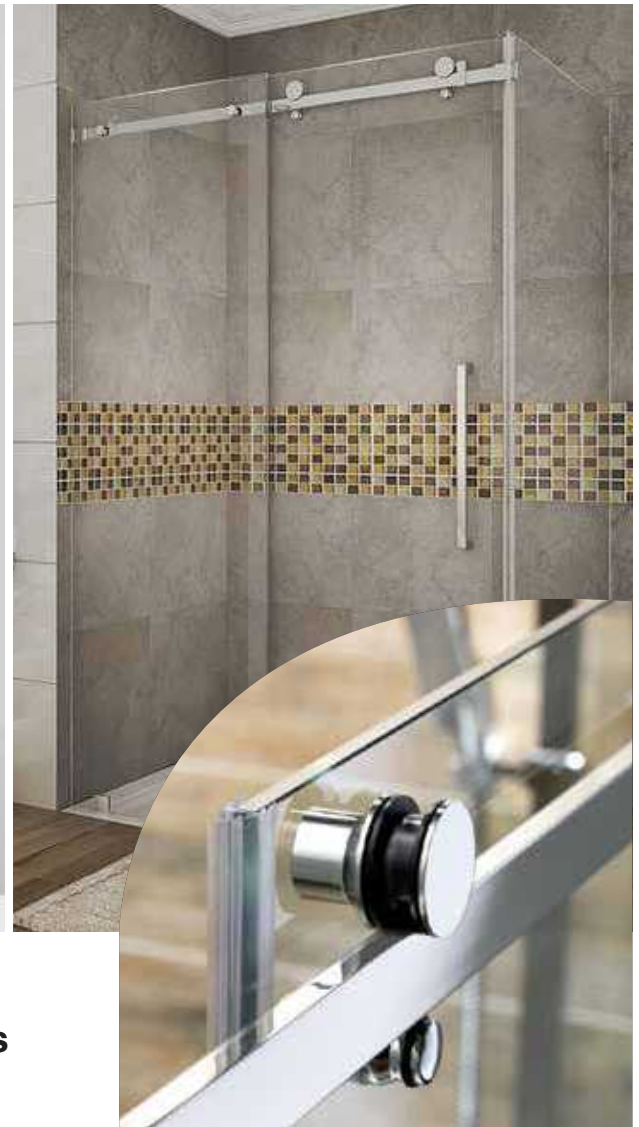
TSL-WPB 2 Mtr
Water Proof Bars
50x60x2000mm



TPS-9
Offset Lip Seal



TGC-4
Wall to Glass Connector 90°



SLIDING DOOR SYSTEM-11 for Shower Cubicles & internal Applications

TSL-11-KIT

System consists of:

- Rollers 2 sets
- Track to Glass Holder 2 pcs
- Stopper 2 pcs
- Floor Guide 1 pc
- Wall to Track Connector 2 pcs
- Sliding Door Handle (TSL-HN-50) 1 Pc
- Track to be ordered separately as per requirement

Suitable for 8mm-10mm Glass



TSL-11-A1
Sliding Door Roller Set



TSL-11-A2
Track to Glass Holder



TSL-11-A3
Stopper



TSL-11-A4
Floor Guide



TSSKH-1-ED
Wall to Track Connector



TSL-HN-50
Sliding Door Handle



TSL-11-TRACK
Track Available in
2mt & 3mt length



TSL-11-A6
Track to Glass Holder
Optional for 90° Application

SLIDING DOOR SYSTEMS



SILVER BM

STANDARD SLIDING SYSTEM FOR WOODEN / FRAMED DOORS



TSL-WD-100
Sliding System Set for Single Framed / Wooden Door of 100 Kg



TSL-TRACK-E2
Top Track Suitable for TSL-WD-100 & TSL-WD-001 (Available in 2mt,3mt & 4mt)

STANDARD SLIDING SYSTEM FOR FRAMELESS GLASS DOORS



TSL-GL-120
Sliding System for Single Frameless Glass Door of 120kg



TSL-TRACK-E2
Top Track Suitable for TSL-GL-120 (Available in 2mt,3mt & 4mt)

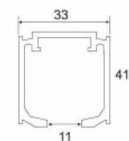
SOFT CLOSE SLIDING DOOR SYSTEM 44



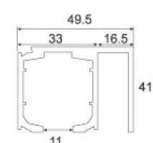
- Soft Closing on Both Side
- High Speed Precise Bearings
- Material: Super Aluminum Alloy
- Minimum Door Width: 700mm

TSL-44-A1-SC KIT-1
Single Buffer Damping Roller for Glass Door of 40kg

TSL-44-A1-SC KIT-2
Double Buffer Damping Roller for Glass Door of 40kg



TSL-44-B1-SC TRACK
Soft Close Track Suitable for TSL-44-A1-SC (Available in 2mt,3mt & 4mt) (Only door)



TSL-44-B3-SC TRACK
Soft Close Track Suitable for TSL-44-A1-SC (Available in 2mt,3mt & 4mt) (Door & fixed glass)



SLIDING DOOR SYSTEM-44

SSS BM GP RGP



TSL-44-A1 KIT

System consists of

- Rollers 2pcs (Door weight upto 40kg)
 - Stopper 2pcs
 - Floor Guide 1Pc
- (Available in Plastic and Metal Body)



TSL-44-A2 KIT

System consists of

- Rollers 2pcs (Door weight upto 80kg)
 - Stopper 2pcs
 - Floor Guide 1Pc
- (Available in Metal Body Only)

SLIDING DOOR HANDLES FOR GLASS DOORS



TSL-44-A5
Wall to Track Fixer



TSL-44-A9
Wall to Track Fixer



TSL-HN-10
Sliding Door Handle



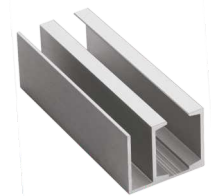
TSL-HN-50
Sliding Door Handle



TSL-44-B1 Track
Aluminium Anodized Track (Only Door)
(Available in 2mt, 3mt & 4mt length)



TSL-44-B2 Track
Aluminium Anodized Track (Double Door)
(Available in 2mt, 3mt & 4mt length)



TSL-44-B3 Track
Aluminium Anodized Track (Door & Fixed Glass)
(Available in 2mt, 3mt, 4mt & 5mt length)

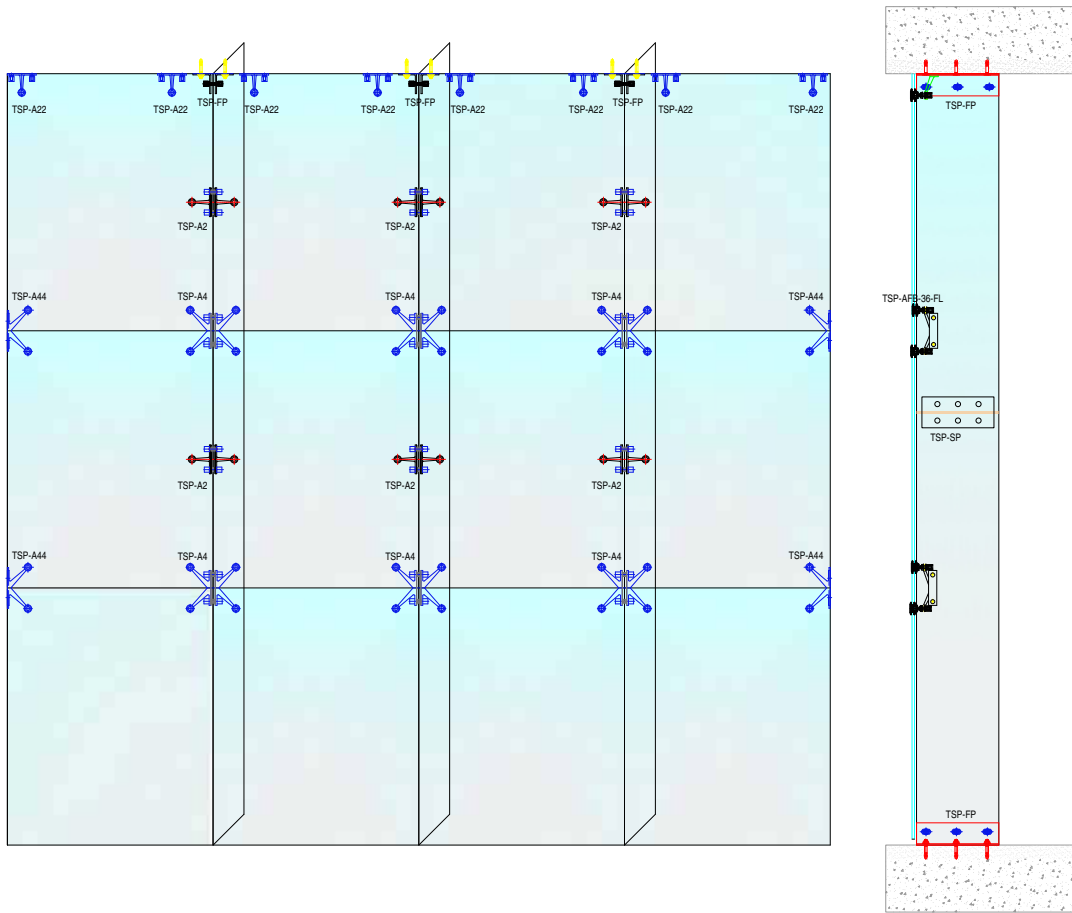
*** 60 months warranty**



SPIDER FITTINGS

Spider systems are used to create spaces with minimal visual weight. Spider fittings are designed for mounting glass to walls, posts or other structural substrates with minimal visible connections. Manufactured from stainless steel 316 grade and 304 grade, available in two finishes : Satin Stainless Steel and Polished Stainless Steel, Spider Fittings Support the four glass corners and keep the glass panels leveled, can be placed within the building, with only a small flushed screw on outside which results in completely smooth outer view.

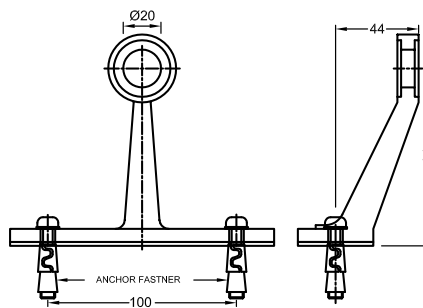




SPIDER FITTINGS WITH FIN

SS 316

Finish: SSS (PSS available on demand)

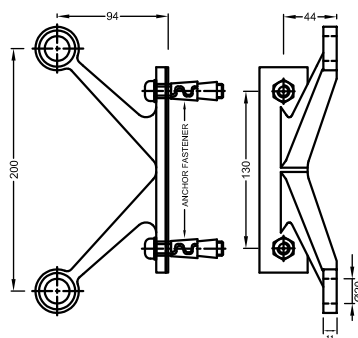


Specifications:

- Installed with routels
- Teflon washers prevent glass damage
- For ceiling/wall to glass installation
- Supplied with Anchor Fasteners

TSP-A22

One Way Spider for Ceiling/Wall

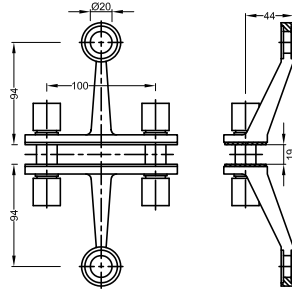


Specifications:

- Installed with routels
- Teflon washers prevent glass damage
- For ceiling/wall to glass installation
- Supplied with Anchor Fasteners

TSP-A44

Two Way Spider for Ceiling/Wall

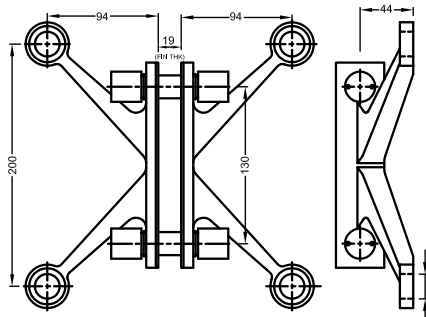


Specifications:

- Installed with routels
- Teflon washers prevent glass damage
- Firm holding with fin

TSP-A2

Two Way Spider with Fin



Specifications:

- Installed with routels
- Teflon washers prevent glass damage
- Firm holding with fin

TSP-A4

Four Way Spider with Fin

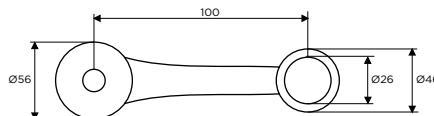
Fin thickness is suggestive

Dimensions are subject to change. Kindly refer to actual products for glass preparation

SPIDER FITTINGS WITHOUT FIN (200MM ARM DISTANCE)

SS 316

Finish: SSS (PSS available on demand)

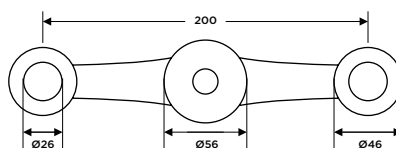


Specifications:

- 145mm Arm
- Attached to a fixed structure
- Installed with routels

TSP-B-201

One Way Spider without Fin



Specifications:

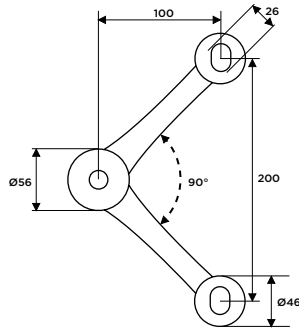
- 200mm Arm
- Attached to a fixed structure
- Installed with routels

TSP-B-202

Two Way Spider without Fin 180°



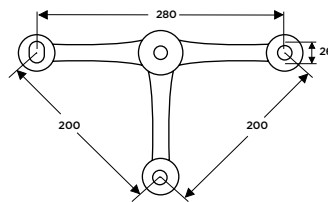
TSP-B-202A
Two Way Spider without Fin 90°



- Specifications:**
- 200mm Arm
 - Attached to a fixed structure
 - Installed with routels



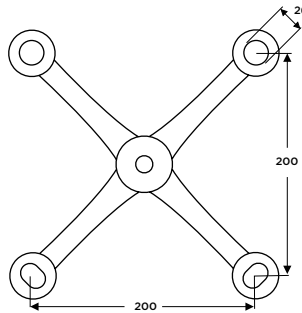
TSP-B-203
Three Way Spider without Fin



- Specifications:**
- 200mm Arm
 - Attached to a fixed structure
 - Installed with routels



TSP-B-204
Four Way Spider without Fin



- Specifications:**
- 200mm Arm
 - Attached to a fixed structure
 - Installed with routels

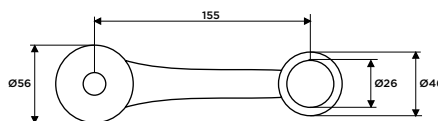
SPIDER FITTINGS WITHOUT FIN (220MM ARM DISTANCE)

SS 316

Finish: SSS (PSS available on demand)



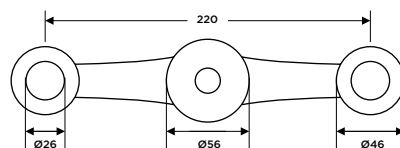
TSP-B-221
One Way Spider without Fin



- Specifications:**
- 155mm Arm
 - Attached to a fixed structure
 - Installed with routels



TSP-B-222
Two Way Spider without Fin 180°

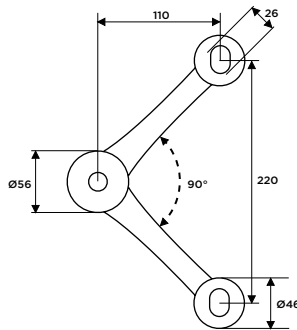


- Specifications:**
- 220mm Arm
 - Attached to a fixed structure
 - Installed with routels

SPIDER FITTINGS



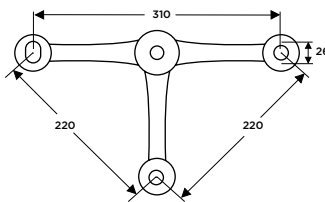
TSP-B-222A
Two Way Spider without Fin 90°



- Specifications:**
- 220mm Arm
 - Attached to a fixed structure
 - Installed with routels



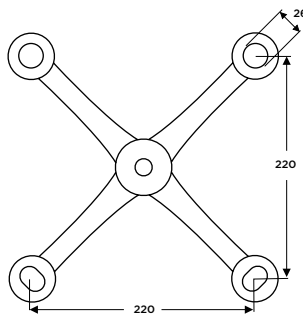
TSP-B-223
Three Way Spider without Fin



- Specifications:**
- 220mm Arm
 - Attached to a fixed structure
 - Installed with routels



TSP-B-224
Four Way Spider without Fin



- Specifications:**
- 220mm Arm
 - Attached to a fixed structure
 - Installed with routels

SPLICE PLATES



TSP-SP-200
Splice Plate 200mm



TSP-SP-300
Splice Plate 300mm



TSP-SP-350
Splice Plate 350mm
(400 & 450mm also available)

SS 304
Finish: SSS (PSS available on demand)

FIN PLATES



TSP-FP-200
Fin Plate 200mm



TSP-FP-300
Fin Plate 300mm



TSP-FP-350
Fin Plate 350mm
(400 & 450mm also available)

SS 304
Finish: SSS (PSS available on demand)

SS 316

Finish: SSS (PSS available on demand)

SPIDER BOLTS



TSP-FB-FL
Fixed Bolt (Flat Head)



TSP-AFB-36-FL
Articulate Bolt (Flat head)



TSP-SH-01
To Hold Without Fin
Spiders to any Structure

GLASS CANOPY FITTINGS

SS 304

Finish: SSS (PSS available on demand)



TCF-01
Wall to Glass Connector



TCF-02
Adjustable Glass Connector
for TCF-316



TCF-03
Wall Fitting for TCF-316



TCF-316
Threaded Sleeve for
TCF-ROD (Supplied In Pairs)



TCF-ROD-12mm/16mm
Rod 12mm for TCF-02S & 03S
Rod 16mm for TCF-316



TCF-01-S
Wall to Glass Connector



TCF-02-S
Glass Fitting for
TCF-ROD-12mm



TCF-03-S
Wall Fittings for
TCF-ROD-12mm

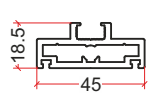
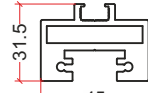
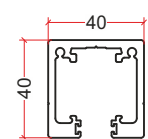
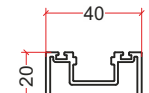
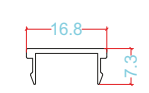
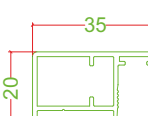
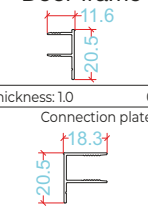



SLIDING FOLDING

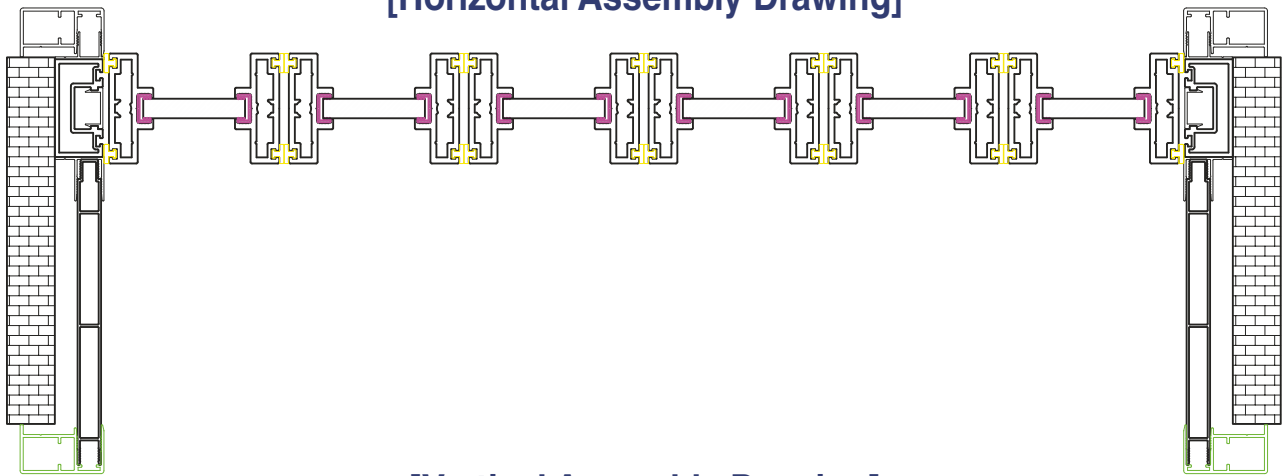
Taiton provides a sliding folding glass door system that is designed to offer a modern and sleek look while also providing maximum functionality and convenience. The sliding folding glass door system is ideal for use in residential and commercial buildings, allowing for easy and efficient access between indoor and outdoor spaces.

The sliding folding glass door system is made using high-quality materials and is designed to be durable and long-lasting. It is available in a variety of configurations, including bi-fold and multi-fold, and can be customized to fit any building or room.

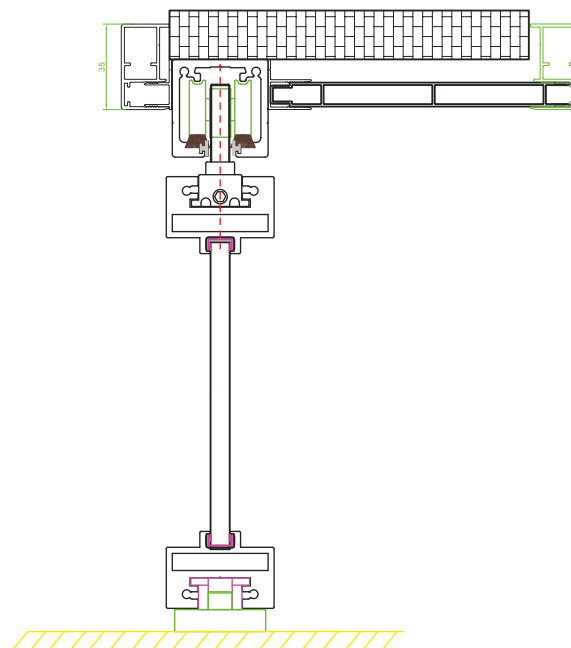


<p>TAV-SFS-V-45 Side mullions</p>  <p>Wall thickness: 2.5 0.85kg/m</p>	<p>TAV-SFS-H-45 up and down horizontal</p>  <p>Wall thickness: 2.5 1.61kg/m</p>	<p>TAV-SFS-T-45 Single hanging rail</p>  <p>Wall Thickness: 3.0 1.44kg/m</p>	<p>TAV-SFS-S1 Single side seal</p>  <p>Wall thickness: 1.8 0.68kg/m</p>	<p>TAV-SFS-S2 Side seal cover</p>  <p>Wall Thickness: 1.0 0.08kg/m</p>
<p>TAV-SFS-DC Door cover</p>  <p>Wall thickness: 1.3 0.40kg/m</p>	<p>TAV-SFS-DF Door frame</p>  <p>Wall Thickness: 1.0 0.10kg/m Connection plate F strip</p> <p>Wall Thickness: 1.0 0.15kg/m</p>	<p>TAV-SFS-CP Connecting plate</p>  <p>Wall Thickness: 1.0 0.79kg/m</p>		

[Horizontal Assembly Drawing]

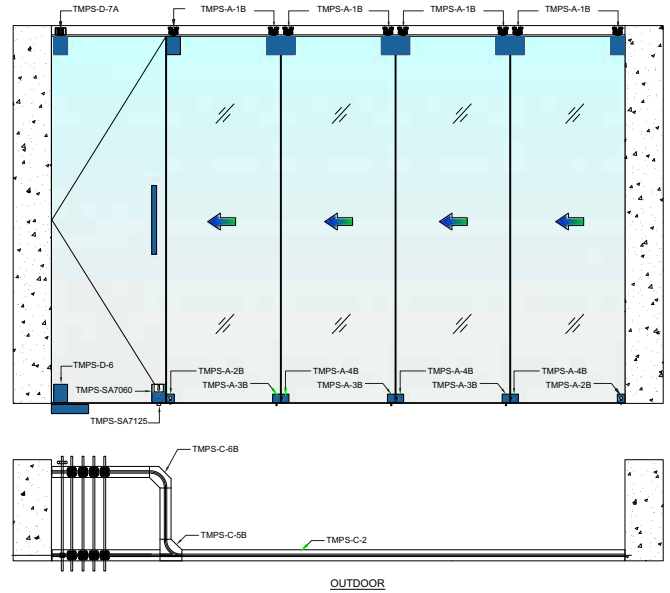


[Vertical Assembly Drawing]



MOVABLE GLASS PARTITION SYSTEM

TMPS-A-B



TMPS-A-1B
Top Glass Holder with Roller



TMPS-A-2B
Bottom Bolt (with hole)



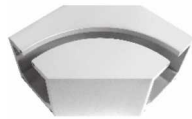
TMPS-A-3B-L/R
Bottom Bolt (with side bolt)



TMPS-A-4B
Bottom Bolt



TMPS-C-5B-L/R
'T' Joint Module



TMPS-C-6B
'L' Joint Module



TMPS-D-6
Bottom Patch Fittings



TMPS-D-7A
Top Patch Fittings



TMPS-SA7060
Corner Patch Lock



TMPS-SA7125
Strike Plate for SA7060



TMPS-C-2 Track
Standard Length: 3mtr/4mtr

SLIDING FOLDING SYSTEM-TSFS

SSS



TSFS-E1
End Panel Fitting with Top Pivot



TSFS-E2
End Panel Fitting with Bottom Pivot



TSFS-E3
Glass to Glass Connecting Hinge with Floor Lock



TSFS-E4
Glass to Glass Interconnecting Hinge



TSFS-E5
Glass to Glass Connector With Roller



TSFS-E6
Glass to Glass Connecting Hinge with Guide Locator



TSFS-E7
End Sliding Folding Panel Fitting with Roller



TSFS-E8
End Sliding Folding Panel Fitting with Guide Locator



TSFS-E9
End Panel Fitting with Bottom Pivot (for odd panels)



TSFS-E10
Wall to Glass Hinge



TSFS-C2 / TSFS-C3
Top Track / Bottom Track 3mtr & 4mtr



TSSPL-SDL-G / TSSPL-SDL
Sliding Door Lock With Claw Type Dead Bolt & Strike Box/Plate

Panel Qty.	E1 & E2	E3 & E4	E5 & E6	E7 & E8	E9
2 Panels	01 Set	01 Set	-	01 Set	-
3 Panels	01 Set	01 Set	01 Set	-	01 Pc
4 Panels	01 Set	02 Sets	01 Set	01 Set	-
5 Panels	01 Set	02 Sets	02 Sets	-	01 Pc
6 Panels	01 Set	03 Sets	02 Sets	01 Set	-

WOODEN SLIDING FOLDING SYSTEM-TWSF



TWSF-01



TWSF-02



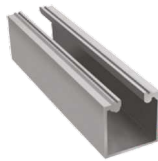
TWSF-03



TWSF-04



TWSF-05



TWSF-011



TWSF-043

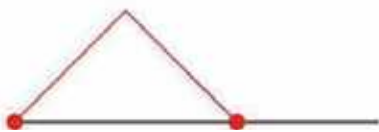


TWSL-ACC-22

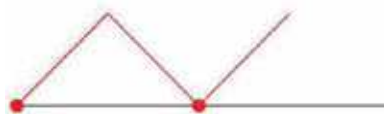
SPECIFICATIONS:

- Max panel height: 3300mm
- Max panel weight: 75kg.
- Max panel width: 900mm
- Suitable panel thk: 35 - 50mm

Panel Qty.	TWSF-01	TWSF-02	TWSF-03	TWSF-04
2 Panels	01 Set	01 Set	-	01 Set
3 Panels	01 Set	01 Set	01 Set	-
4 Panels	01 Set	02 Set	01 Set	01 Set
5 Panels	01 Set	02 Set	02 Set	-
6 Panels	01 Set	03 Set	02 Set	01 Set
8 Panels	01 Set	04 Set	03 Set	01 Set



2 Panels



3 Panels



4 Panels



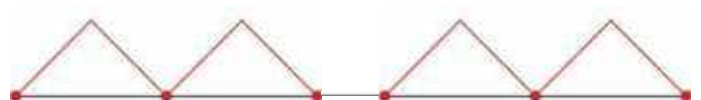
5 Panels



6 Panels



8 Panels



TELESCOPIC SLIDING FRAMELESS GLASS DOOR SYSTEM

TAITON features A telescopic sliding frameless glass door system is a type of door system that features two or more glass panels that slide horizontally along a track, allowing the door to open and close without a traditional frame. The term "telescopic" refers to the fact that the panels can overlap or "telescope" one another as they slide, allowing the door to fully open with minimal clearance required.

This type of door system is often used in commercial or residential settings where a modern, sleek appearance is desired. Because the door panels are made of glass and there is no visible frame, the system can provide a seamless transition between interior and exterior spaces and allow natural light to flow freely throughout a room.



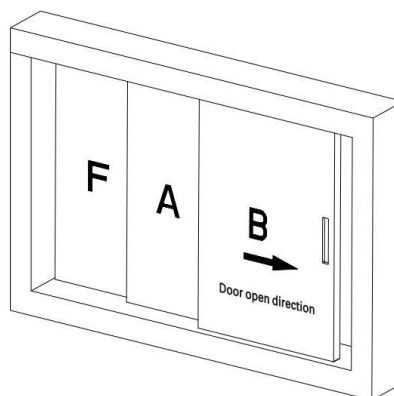
TELESCOPIC SLIDING FRAMELESS GLASS DOOR SYSTEM



Glass Thickness : 8-12mm
 Min Door width : 550 mm
 Max Door width : 1200mm

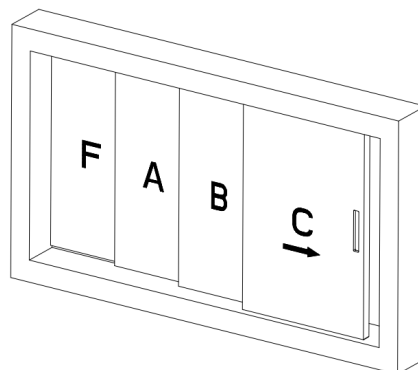
Telescopic Sliding Frameless Glass 2 Door System

TSL-FL-02



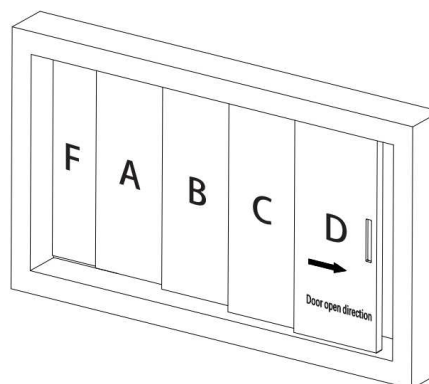
Telescopic Sliding Frameless Glass 3 Door System

TSL-FL-03

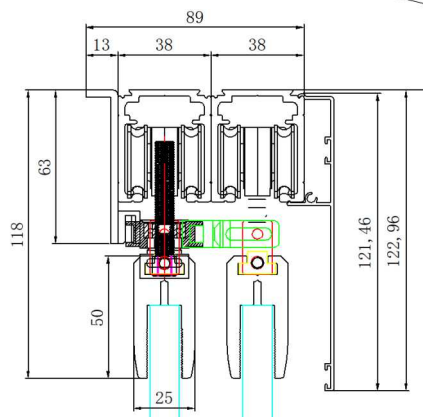
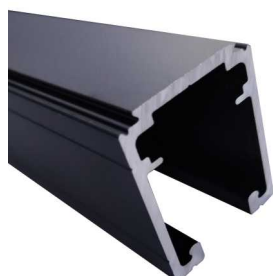


Telescopic Sliding Frameless Glass 4 Door System

TSL-FL-04



TAV-HD-TT Top Track



Description	Manual partition	Semi-automatic partition	Fully automatic partition
Height	12mtr	9mtr	9mtr
Thickness	100mm	100mm	100mm
Weight	55kg/m ²	30kg/m ²	30kg/m ²
Sound insulation	53dB	55dB	55dB
Track system	Steel track, load-bearing capacity upto 3500kg/m	Steel track, load-bearing capacity upto 3500kg/m	Steel track, load-bearing capacity upto 3500kg/m
Sealing system	Manual, continuous shaking	Electric control, double motor	Electric control, double motor
Operations use	Manual push door, Manual seal	Manual push door, Electric seal	Fully Automatic, Electric seal
Starting thrust	20kg	5kg	5kg
Layout time	(30pcs) 60min	(30pcs) 20min	(30pcs) 20min

SOFT CLOSE TELESCOPIC SLIDING SYSTEM

Features:

- Door panels stacking on one side in-line with top track
- Soft closing mechanism for smooth movement
- No track at the Bottom
- Suitable for Residences, Hotels, Offices etc
- Sliding track: Aluminium Anodized
- Hanging rollers: Zinc Alloy, SN
- Bracket: Iron, SN
- Finish: Black Matte, Gold Matte

MANUAL FRAMED DOOR

Features:-

Wt. Capacity	: 80kg
Door Thickness	: 30-45mm
Door Height Formula	: H-92mm
Door Width (Telescopic)	: 700-950mm
Door Width (Bi-parting)	: 700-950mm



TVC-3+1-AL



TVC-OOP-2+2-AL

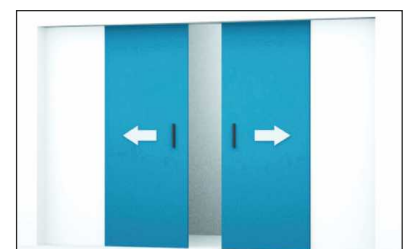
MANUAL WOODEN DOOR

Features:-

Wt. Capacity	: 80kg
Door Thickness	: 45mm
Door Height Formula	: H-85mm
Door Width (Telescopic)	: 700-950mm
Door Width (Bi-parting)	: 700-950mm



TVC-3+1-WD



TVC-OOP-2+2-WD

EXCLUSIVE LUXURY SHOWER CUBICLES

TAITON MAXIA features the next generation luxury shower cubicles which are crafted to give elegance and style to the bathroom.

TAITON MAXIA's luxurious range of shower cubicles takes the aesthetics of the bathroom to the next level. There is no better way to elevate your spirits to refresh and rejuvenate than taking bath in your customized TAITON MAXIA Shower Cubicle.

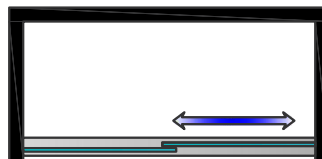
Glasses are supplied with blast resistant film which ensures that the glass is not scattered in the event of breakage.





TMAX-DS2501

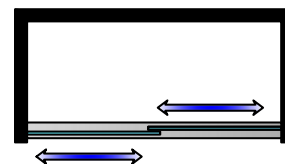
Automatic Sliding Door Shower Cubicle



- One Fixed One Sliding Magic Smart Glass (Available without smart glass also)
- Driven by new generation magnetic levitation power, which is safe, stable & reliable
- System Automatically Rebound when meet resistance during closing
- Infrared Sensor Switch for Safe & Convenient Opening
- The voltage is controlled within 24 volts, allowing you to enjoy the shower without worry
- Standard size: 1500x2000mm (customization available on demand)
- Standard Glass Thickness: 10mm
- Standard color: Black Matte
- Material: SS 304



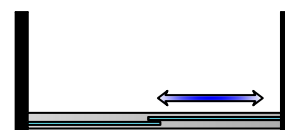
TMAX-S4102
Double Sliding Door Shower Cubicle



- Door opening can be done in dual direction, more humane.
- Roller Inclined plane design for noiseless operation and durability
- Innovative dust-removal track wheel design.
- Glass Crystal embedded frame, trendy and elegant.
- Integral buffering and wheel design reduces buffer noise and vibration, and reduces resistance
- Standard size: 1600x2000mm (customization available on demand)
- Standard glass thickness: 10mm
- Standard color: Rose Gold inlaid with Crystal
- Material: SS 304



TMAX-S8401
Sliding Door Shower Cubicle

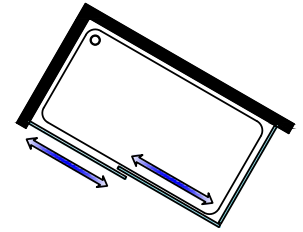


- Dustproof and quiet track design
- Beveled design of the pulley is quiet and durable
- Customized design hanging wheel and fixed towel bar
- Standard size: 1600x2000mm (customization available on demand)
- Standard glass thickness: 10mm
- Standard color: Black Matte
- Material : SS 304



TMAX-DL2C02

Double Sliding Door Shower Cubicle

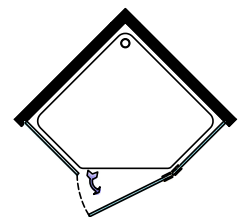


- Door opening can be done in dual direction, more humane
- Hollow square rounded corner hanging clips, stylish and luxurious
- Slim hollow long handle, can be used as a towel bar, sleek and simple
- Standard size : 1000x1400x2000mm (customization available on demand)
- Standard glass thickness : 10mm
- Standard color : Green Bronze
- Material : SS 304



TMAX-D5301

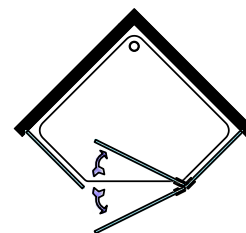
Swing Door Shower Cubicle



- 'Balance beam' structure design hinge in the middle to prevent hinge sinking
- Etch carving and rose color electroplating on all hardware
- Angle line combination design of handles
- Back water tank design at bottom of door to completely separate wet and dry areas.
- Standard size : 1000x1000x2000mm (customization available on demand)
- Standard glass thickness : 8/10mm
- Standard color : Green Bronze
- Material : SS 304



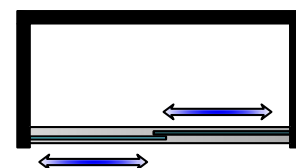
TMAX-D5601
Swing Door Shower Cubicle



- Built-in hinge design, beautiful and not sinking
- The glass is simple and framed, with a strong Nordic style
- Door can be opened inside and outside as per requirement
- Standard size: 1000x1000x2000mm (customization available on demand)
- Standard glass thickness: 8mm
- Standard color: Black Matte
- Material : Original 6463 Aluminum profile



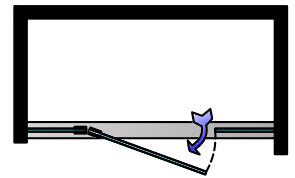
TMAX-S8302
Double Sliding Door Shower Cubicle



- Door opening can be done in dual direction, more humane
- Beveled pulley design, quiet and durable
- Innovative dustproof & silent track design
- Georgian bar design add a rich Nordic minimalist style
- Standard size: 1600x2000mm (customization available on demand)
- Standard glass thickness: 8mm
- Standard color: Black Matte
- Material: SS 304 Stainless Steel/6463 Aluminium Alloy



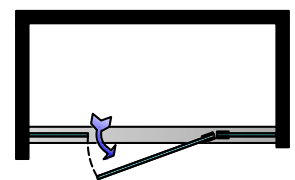
TMAX-S5851
Swing Door Shower Cubicle



- The narrow all-inclusive design of the frame is simple and stylish
- L-Shaped long handle, parent-child design, suitable for both young and old
- The slender hinges echo the minimalist style
- Standard size : 1500x2000mm (customization available on demand)
- Standard glass thickness : 10mm
- Standard color : Clear Chrome/Black Matte
- Material : SS 304



TMAX-S5151E
Swing Door Shower Cubicle

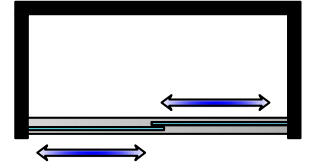


- Extremely simple product, with elegant framed design, with harmonious matching, high-class and clear
- Back water tank design at bottom of door to completely separate wet and dry areas
- Standard size: 1500x2000mm (customization available on demand)
- Standard glass thickness: 8/10mm
- Standard color: Black Matte
- Material : SS 304



TMAX-S4202

Double Sliding Door Shower Cubicle

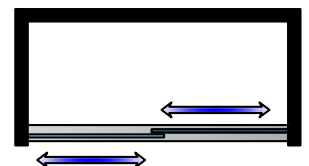


- Door opening can be done in dual direction, more humane
- Roller Inclined plane design for noiseless operation and durability
- Innovative dust-removal track wheel design
- Integral buffering and wheel design reduces buffer noise and vibration, and reduces resistance.
- Shell embedded Hanging wheel and handle, trendy and elegant
- Standard size : 1600x2000mm (customization available on demand)
- Standard glass thickness : 10mm
- Standard color : Clear Chrome
- Material : SS 304/8K



TMAX-S4002

Double Sliding Door Shower Cubicle



- Door opening can be done in dual direction, more humane
- Self lubricating totally closed bearing, super quiet sliding
- Glide block design, better for cleaning
- Track appearance design is unique and delicate, with concise and trendy textures
- Square round-angle design handle, safe and comfortable
- Standard size: 1600x2000mm (customization available on demand)
- Standard glass thickness: 8mm
- Standard color: Clear Chrome
- Material: SS 304/8K



TMAX- C 6902
Shower Cabinet with Fan Sliding Door



- Opening method: Shower Cabinet with Fan sliding door
- Standard size: 900x900x1900mm 1000x1000x1900mm
- Standard thickness of galss: 8mm super-strong all-tough ened safety galss
- Standard Color: Clear chrome

Non-standard specifications can be ordered



TMAX- L 9401
Outside Openable Door Shower Room



- Opening method: Rectangular Outside Openable Door Shower Room
- Standard Size: 800x1000x2000mm
- Standard Thickness of galss: 8/10mm super-strong all- toughened safety galss
- Standard Color: Green bronze

Non-standard specifications can be ordered



TMAX- D 5501

Diamond Outside Openable Door Shower Room



- Opening method: Diamond id outside Openable door shower room
- Standard size: 900x900x2000mm 1000x1000x2000mm
- Standard thickness of galss: 8/10mm super-strong all-tough ened safety galss
- Standard Color: Rose Gold in laid with galss

Non-standard specifications can be ordered



TMAX- S 5751

Two fixed one Drop Outside Openable Door Screen



- Opening method: Two Fixed One Drop Outside Openable Door Screen
- Standard size: (1200-1200)x2000mm
- Standard thickness of galss: 10mm super-strong all-tough ened safety galss
- Standard Color: Clear chrome,Matte black, Metalic gray

Non-standard specifications can be ordered



AUTOMATIC SLIDING DOORS

TAITON features Automatic Sliding Doors which are designed for ease and convenience, better aesthetics, secured door entry and above all savings due to thermal management. Automatic Sliding doors can be integrated with various accessories available to operate the door as per the site requirements.

TAITON also offers breakout doors which are highly recommended in emergency exit and escape route doors in Airports, Commercial spaces, hospitals and many other building types.



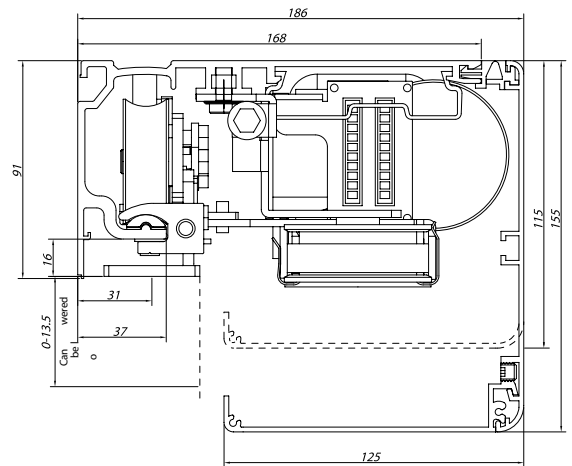
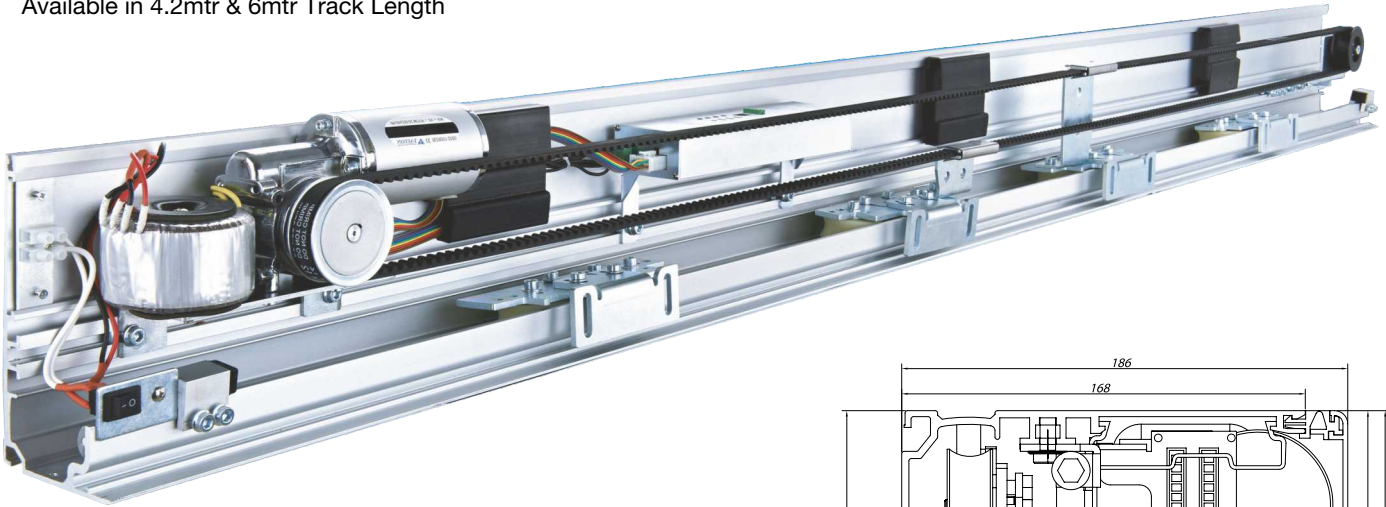
AUTOMATIC SLIDING DOORS



PREMIUM SLIDE

TAM-PS-01

Available in 4.2mtr & 6mtr Track Length



Modes of Operation

- Permanent Open
- Closed
- Automatic
- Partial Open
- Exit Only
- Off

Adjustable Parameters for:

- Opening Speed
- Door Buffer Distance
- Door Buffer Intensity
- Starting Force
- Opening Hours
- Closing Speed
- Closed Buffer Distance
- Closed Buffer Force

PART LIST

Specification	TAM-PS-01 (4.2 Mtr/6 Mtr)	
Horizontal Pull	Single Door	Double Doors
Leaf Weight	<150Kg	<120kg x 2
Width of Door	700-1500mm	600-1500mm
Controller	High-Performance Digital Micro-Controller	
Motor	DC 24V 65W with Toroidal Transformer	
Opening Speed	< 400mm / s (adjustable)	
Closing Speed	< 300mm / s (adjustable)	
Door Hold Time	0.5 - 10s (adjustable)	
Manual Thrust	< 45N	
Opening Direction	Optional	
Supply Voltage	AC110V/AC220V 50/60Hz	
Admissible Temp.	-30°C to +50°C	
Admissible Humidity	35 - 85% RH (non-condensing)	
Extensions	Safety light barrier, such as remote control of various types of access control	

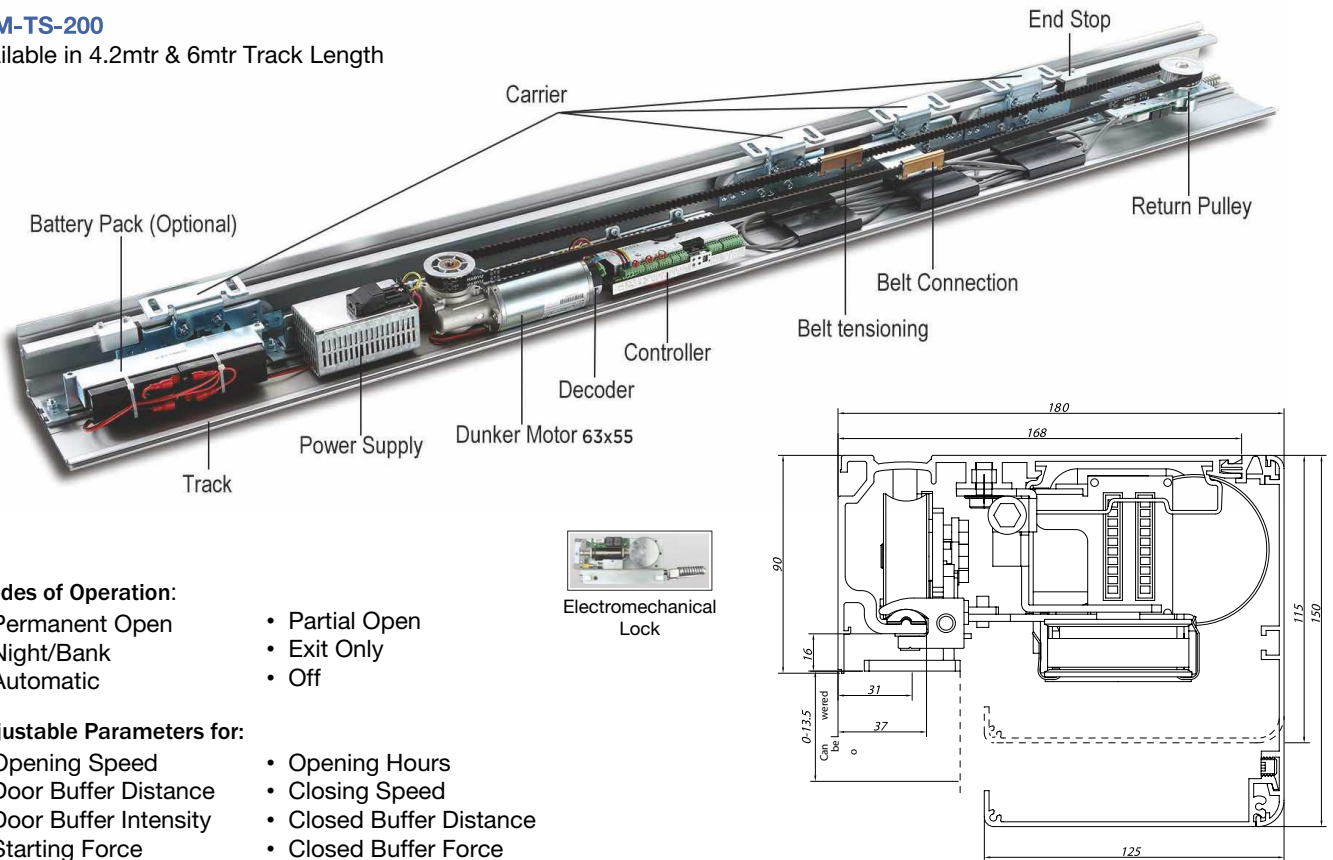
STANDARD		
Product Code	Fitting	Quantity
TAM-PS-01 TRACK	Track	1 Pcs (4.2/6 Mtr)
TAM-PS-01-CNTR	Controller	1 Pcs
TAM-PS-01-MT	Motor	1 Pcs
TAM-PS-01-PS	Power Switch	1 Pcs
TAM-TB	Toothed Belt	1 Pcs (8/12 Mtr)
TAM-BC	Belt Connection	1 Set
TAM-PS-01-RC	Remote Control	1 Pair
TAM-PS-01-TW	Adjustable Tension Wheel	1 Pcs
TAM-MS	Sensor	2 Pcs
TAM-PS-01-STPR	Stopper	1 Pcs
TAM-PS-01-HGR	Hanger	4 Pcs
TAM-SLB (optional)	Infrared Safety Light Barrier	1 Pair
TAM-GAC	Aluminium Clamps for Glass	1 Pair (1/1.5 Mtr)
TAM-GFG	Floor Guide for Glass Door	1 Pair
TAM-WFG	Floor Guide for Wooden Door	1 Pair

* 18 months warranty

TERRIFIC SLIDE

TAM-TS-200

Available in 4.2mtr & 6mtr Track Length



Modes of Operation:

- Permanent Open
- Night/Bank
- Automatic
- Partial Open
- Exit Only
- Off

Adjustable Parameters for:

- Opening Speed
- Door Buffer Distance
- Door Buffer Intensity
- Starting Force
- Opening Hours
- Closing Speed
- Closed Buffer Distance
- Closed Buffer Force

PART LIST

Specification	TAM-TS-200 (4.2 Mtr/6 Mtr)	
Horizontal Pull	Single Door	Double Doors
Leaf Weight	<200Kg	<150kg x 2
Width of Door	700-3000mm	400-1500mm
Controller	High-Performance Digital Micro-Controller	
Motor	Dunker motor GR 63x55 24V 95W with decoder	
Opening Speed	100 - 700mm / s (adjustable)	
Closing Speed	100 - 500mm / s (adjustable)	
Door Hold Time	0 - 180 s (adjustable)	
IP Protection Class	IP20	
Opening Direction	Optional	
Supply Voltage	AC230V 50/60Hz	
Rated Power	200W	
Admissible Temp.	-20°C to 60°C	
Admissible Humidity	93%	
Extensions	Safety light barrier, such as remote control of various types of access control	
Optional	Electromechanical Lock, Battery Pack	

STANDARD		
Product Code	Fitting	Quantity
TAM-TS-200 TRACK	Track	1 Pcs (4.2/6 Mtr)
TAM-TS-200-CNTR	Controller	1 Pcs
TAM-TS-200-MT	Motor	1 Pcs
TAM-TS-200-PS	Power Switch	1 Pcs
TAM-TB	Toothed Belt	1 Pcs (8/12 Mtr)
TAM-BC	Belt Connection	1 Set
TAM-TS-200-RC	Remote Control	1 Pair
TAM-TS-200-TW	Adjustable Tension Wheel	1 Pcs
TAM-MS	Sensor	2 Pcs
TAM-TS-200-STPR	Stopper	1 Pcs
TAM-TS-200-HGR	Hanger	4 Pcs
TAM-SLB (optional)	Infrared Safety Light Barrier	1 Pair
TAM-GAC	Aluminium Clamps for Glass	1 Pair (1/1.5 Mtr)
TAM-GFG	Floor Guide for Glass Door	1 Pair
TAM-WFG	Floor Guide for Wooden Door	1 Pair

* 24 months warranty

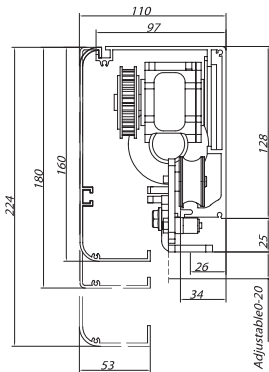
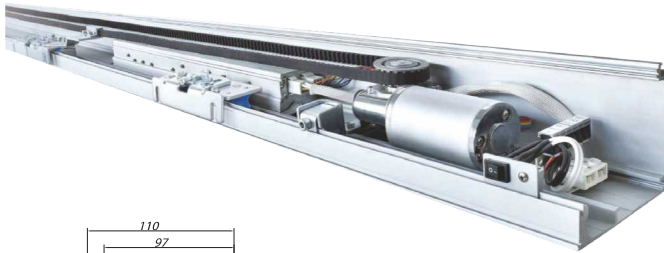
AUTOMATIC SLIDING DOORS



ECO SLIDE

TAM-ES-01

Available in 4.2mtr & 2.4mtr Track Length



Specification	TAM-ES-01 (4.2 Mtr)	
Horizontal Pull	Single Door	Double Doors
Leaf Weight	<120Kg	<100kg x 2
Width of Door	700-1300mm	600-1050mm
Controller	High-Performance Micro-Controller	
Motor	DC 24V 55W Brushless Motor	
Opening Speed	< 400mm / s (adjustable)	
Closing Speed	< 300mm / s (adjustable)	
Door Hold Time	0.5 - 10s (adjustable)	
Manual Thrust	< 45N	
Opening Direction	Optional	
Supply Voltage	AC AC220-250V 50/60Hz	
Admissible Temp.	-30°C to +50°C	
Admissible Humidity	35 - 85% RH (non-condensing)	
Extensions	Safety light barrier, such as remote control of various types of access control	

PANIC BREAK OUT

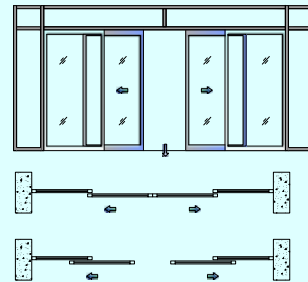
TAM-PBO

Customized Doors

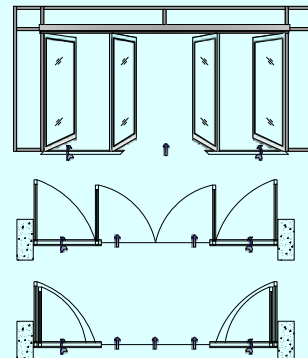
The full breakout sliding door is specially designed to meet emergency escape requirements. In an emergency, the sliding doors & fixed panels can be pushed straight away to facilitate escape. These doors give an emergency opening of about 85% to 90% of the structure width.



Double-leaf, standard operation



Double-leaf, escape situation



Clear opening width with sliding doors	700-2500mm
Clear opening height	2000-3300mm
Max. clear opening width in break out situation	5000mm

* 12 months warranty

RETRO SWING - SURFACE (Wooden Doors)



Advanced Operating System

High efficient and small drive torque DC brushless motor, gentle opening and closing, smooth braking, energy saving & environmental protection.

Safety

Excellent pinch performance. The door returns back automatically in case of any obstacle or resistance during closing.

Convenient

Modular & compact design, beautiful appearance, easy installation.

Reliable

New drive, high quality DC Brushless motor, gear box helical gears, wheels and high wear characteristics reasonable structural design makes it reliable, quiet operation and longer life

Compatible

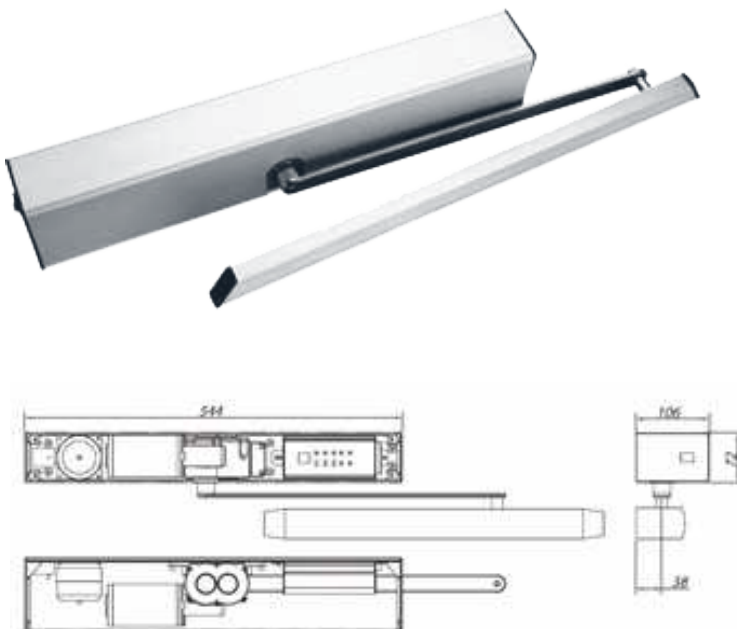
Standard configuration can be integrated with variety of additional accessories as per the site requirements.



Scan for Product Video

TAM-ASD-01

For Single Action Doors



Specification	TAM-ASD-01
Controller Dimensions	85 x 124 x 600mm
Weight	12 Kg
Max Door weight	200 Kg
Open Range	70° to 115°
Closing Speed	100 to 400 mm/s (adjustable)
Door Hold Time	0.5 – 10s (adjustable)
Opening Direction	Optional
Supply Voltage	AC 220V~250V, 50/60Hz
Max current	1A
Max Motor Power	55W
Wait Power	14W
Fuse	Min 3.5A Slow
Admissible Temperature	-30°C to +50°C

* 12 months warranty

RETRO SWING - BOTTOM



Advanced Operating System

High efficient and small drive torque DC brushless motor, gentle opening and closing, smooth braking, energy saving & environmental protection.

Safety

Excellent pinch performance. The door returns back automatically in case of any obstacle or resistance during closing.

Convenient

Modular & compact design, beautiful appearance, easy installation.

Reliable

New drive, high quality DC Brushless motor, gear box helical gears, wheels and high wear characteristics reasonable structural design makes it reliable, quiet operation and longer life

Compatible

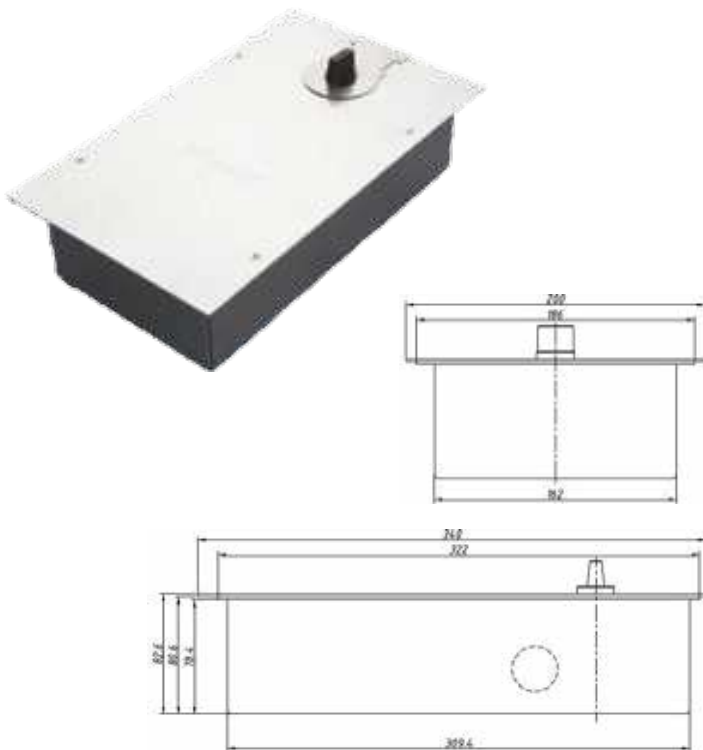
Standard configuration can be integrated with variety of additional



Scan for Product Video

TAM-CASD-03

For Double Action Doors



Specification	TAM-CASD-03
Dimensions	82 x 186 x 310mm
Controller	High Performance Micro-Controller
Motor	DC24V 45W Brushless Motor
Max Door weight	200 Kg
Open Range	± 90°
Opening & Closing Time	3 to 14 s
Door Hold Time	0.5 – 10s (adjustable)
Opening Direction	Optional
Supply Voltage	AC 220V~250V, 50/60Hz
IP Protection	IP44
Admissible Temperature	-30°C to +50°C
Admissible Humidity	35 - 85% RH (non condensing)
Extensions	Safety Light Barrier, such as remote control of various types of access control

* 12 months warranty

AUTOMATIC CURVED SLIDING DOORS



Drive Unit

Equipped with Dunker Motor drive unit. Integrated drive module combined with curved hardware realizes the superiority of curved shaped door in terms of structural stability & driving performance.

Exquisite Hardware Design

Design adopts the drive mode of synchronous wheel. Compared with traditional design, it reduce the loss of hardware during transmission, enabling smooth & noise free operation of the door.

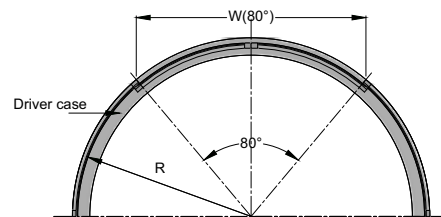
Liberty of Design

Design can be customized into Half circles, full circles, ovals, segments, double segments etc.

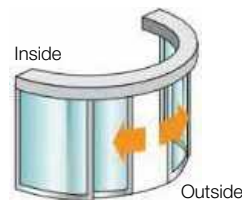
Technical Specification

Standard Size

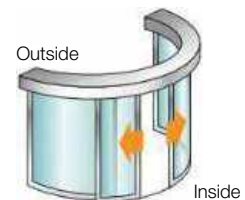
Convex Radius R in mm	Clear Width W in mm	Concave Radius R in mm	Clear Width W in mm
1000	1200	1000	1240
1200	1450	1200	1500
1400	1720	1400	1760
1600	1980	1600	2010
1800	2240	1800	2270
2000	2500	2000	2530



Convex Installation



Concave Installation



Technical Data

Mains power supply	230V, 50/60Hz, 13A
Mains cable	4mtr length
Rated power	100W
Static drive power	Max. 150N
Admissible temp.	-15 to 50°C

Functions

Adjustable speed	500 – 700 cm/s
Electronic control panel	Yes
Auto-reverse safety mechanism	Yes
Safety stopping mechanism	Yes
Battery pack (24V)	Optional
Locking	Optional
Manual unlocking inside/outside	Optional

Components

Dunker Motor	30V 100W DC Motor GR 63x55, IP 65 with Encoder, 3350 rpm
Micro Controller	Connections port for Safety sensor with adjustments of all basic parameters via integrated display & pushbuttons. 24V output for external accessories
Power supply	Input 80-250V AC, output 35V DC

* 12 months warranty

MANUAL & AUTOMATIC REVOLVING DOORS



Features:

- Offer Impressive aesthetic appearance
- Effectively separate indoor and outdoor conditions
- Minimize building's heating & air-conditioning losses, maximizing energy savings
- Equipped with drive units and sensor systems makes the door operate automatically
- Key switch has 3 functions; night lock, go-stop and continuous revolving
- Disabled access function slow the door speed for young, old & differently abled
- Emergency stop button to stop the door movement in emergency
- Manual doors does not require electric power and will never suffer from severe weather conditions.

Specifications:

Diameter	1800-3600 mm
Height	Max. 2700mm
Door Leaf	3 / 4 leafs
Speed	1-4 rpm

TOUCHLESS HAND SENSOR

TAM-MS-THS

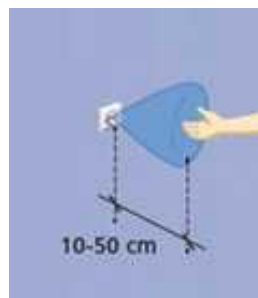
Touchless Intentional Sensor for Automatic Doors

Magic Switch is an intentional touchless microwave sensor which reacts to every intentional motion approaching and allowing to activate the door without any physical contact with the sensor.

In addition to the comfort, it offers a Hygienic opening solution for the Hospitals, Hotels, Restaurants, Retail, Pharmaceutical Industries & Logistics.

Features

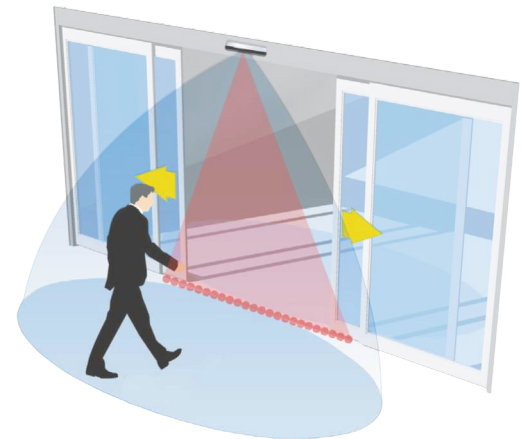
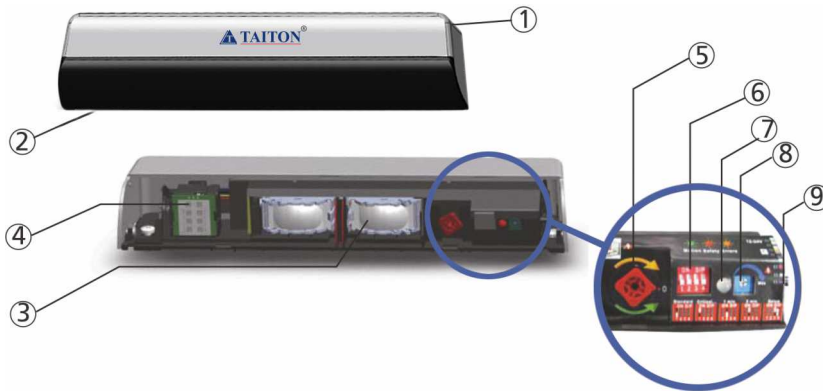
- Microwave module with an adjustable detection area from 10 to 50 cm
- Ideal Hygienic Solution for the Retail, Pharmaceutical, Chemical & Healthcare sectors.
- Efficient alternative to push-buttons and other manual solutions.
- The microwave technology allows to hide the sensor behind any non metallic material for aesthetics and safety



Technology	Microwave motion sensor
Radiated frequency	24.150 GHz
Radiated power density	< 5 mW/cm ²
Detection range (hand)	+/- 10 to 50 cm if movement towards sensor at 90° (adjustable)
Detection mode	Motion (bidirectional)
Speed of target for detection	Min. 5Hz or +/- 3 cm/s, Max. 200 Hz or +/- 1.2 m/s
Supply voltage	12V - 24V AC ± 10 % 12V - 30V DC -5%/+10%
Mains frequency	50 - 60 Hz
Power consumption	< 1.2 W
Output Max. voltage Max. current Max. switching power	Relay with switch-over contact (free of potential) 48 V AC - 60 V DC 1A (resistive) 30 W (DC) / 48 VA (AC)
Output hold time	0.5 s (in PULSE mode)
Temperature range	-20°C to +55°C
Degree of protection	IP 30 with cable connected IP40 flush-mounted without front face IP52 flush-mounted with front face and silicone seal mounted in surface mount box
Material	ABS/Polycarbonate
Color	White
Dimensions	85 mm (L) × 85 mm (H) × 45 mm (W)



TAM-MS-ZS

Dual Technology Sensor combining the microwave technology for the opening and active infrared technology for the safety



- | | |
|--------------------------------|--------------------------------------|
| 1. Cover | 6. Dip switch |
| 2. Front cover | 7. LED |
| 3. Infrared lens | 8. Microwave sensitive potentiometer |
| 4. Microwave antenna | 9. Cable plug |
| 5. IR-curtain adjustment screw | |

Technical Specification

Supply voltage	12 V - 24 V AC +/-10% ; 12 V - 30 V DC -5%/+10%	
Power consumption	< 3 W (VA)	
Mounting height	1.8 m to 3 m	
Admissible Temperature	-25 °C to +55 °C	
IP Protection Class	IP54	
		
Detection mode	Motion Min. detection speed: 5 cm/s	Presence Typical response time: <128 ms (max. 500 ms)
Technology	Microwave doppler radar Transmitter frequency: 24.150 GHz Transmitter radiated power: < 20 dBm EIRP Transmitter power density: < 5 mW/cm ²	Active infrared with background analysis Spot diameter: 6 cm (typ) Number of spots: 24 by curtain Number of curtains: 1
Angle	From 15 ° to 45 ° vertical (adjustable)	From -5 ° to +8 ° (adjustable)
Output	Relay (free of potential change-over contact)	Relay (free of potential change-over contact)
Max. contact voltage	42V AC/DC	42V AC/DC
Max. contact current	1A (resistive)	1A (resistive)
Max. switching power	30W (DC)/60VA (AC)	30W (DC)/60VA (AC)
Hold time output signal	0.5 s	0.5 s

Taiton reserves the right to change the specifications without prior notice

TAM-MS

Economical bi-directional radar sensor for automatic sliding doors.

Technical Specification	
Technology	Microwave and Microprocessor
Transmitter frequency	24.125 Ghz
Transmitter radiated power	<20dBm EIRP
Transmitter power density	<5m W/cm ²
Detection mode	Motion
Minimum detection speed	5 cm/s (measure in the sensor axis)
Supply voltage	12V-24V AC+/-10%, 12V-30V DC
Mains frequency	50 to 60 Hz
Max. power consumption	< 2W (VA)
Output	Relay (free of potential change-over contact)
Max. contact voltage	42V AC/DC
Max. contact current	1A (resistive)
Max. switching power	30W (DC)/60VA (AC)
Max. mounting height	3 mtr
IP Protection Class	IP54
Admissible Temperature	-20°C to +55°C



Taiton reserves the right to change the specifications without prior notice

WIRELESS PRESS BUTTON

TAM-WPB

Features

- Sensitive FM Wireless switch can be integrated with all types of Automatic Doors
- Uses Radio wave to transmit the signal
- Very convenient for places where laying wires is not possible

Power supply of Wireless Button	6V
Power Supply of received	AC/DC 12-36V
Output Capacity	10A 24V DC
Wireless Button Dimensions	203 x 41 x 12.5mm



AUTO DOOR ACCESSORIES



TAM-GAC

Aluminium clamp
Available in 1 mtr. & 1.5 mtr (pair)



TAM-GFG

Floor guides for frameless glass doors (pair).



TAM-WFG

Floor guides for framed doors with adjustable width (pair)



TAM-SW-11

Large area push button for automatic doors



SW-11M



RFID CARD LOCKS

TAITON features stylish, Innovative & affordable Electronic RFID Hotel Locks. Manufactured from heavy duty materials, RFID Hotels Locks are available in various designs & finishes to select from to suit your interior scheme.

Our RFID locks have various certifications like Intertek, CE & manufactured as per ISO 9001 to ensure smooth & unmatched guest convenience.



RFID CARD LOCKS



HOTEL RFID CARD LOCKS

2 years Warranty

SS 304



TAM-RF-LEANA
Finish: Satin
Min. Door Thickness: 30mm



TAM-RF-URBANA
Finish: Satin
Min. Door Thickness: 38mm



TAM-RF-ARENA
Finish: Polished
Min. Door Thickness: 38mm



TAM-RF-MAGNA
Finish: Black Matte
Min. Door Thickness: 38mm



TAM-RF-PLATINA
Finish: Coffee Golden
Min. Door Thickness: 38mm

HOTEL RFID CARD LOCK WITH BLUETOOTH FUNCTION



TAM-RF-DIVINA-BTH
Finish: Satin
Min. Door Thickness: 38mm

ACCESSORIES FOR RFID CARD LOCKS



TAM-RF-CARD
Mifareone Card



TAM-RF-QC-CARD
Query Card



TAM-RF-CR
Encoder



TAM-RF-PDA
Personal Digital Assistant



TAM-RF-PS
Power Saver



TAM-RF-SW
Software

TAITON in Collaboration with Revo-Ex Presents: *Smart Hotel Locks & Guest Management Solution*

- Mobile/Kiosk Check-In
- Mobile Checkout & Payment
- Personalized Offers
- Digital Key & Power
- Digital Dining Experience
- Online Service Requests



TAM-RF-ECS (Intelligent Elevator Control System)



Card Reader

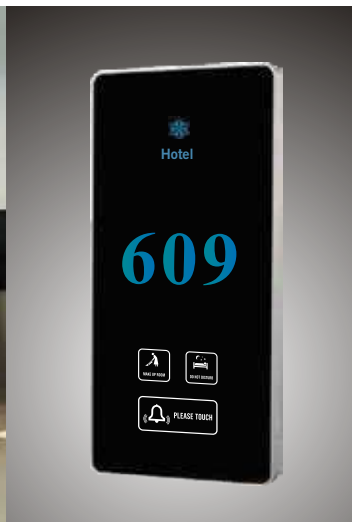


Multiple Elevator Control Box



- 16 Floor Elevator Controller
- Guest card can open the elevator at designated floor

DND SYSTEM



Functions:

- Hotel Name Display
- Room Number Display
- Make up Room
- Do Not Disturb
- Door Bell



TAM-RF-DND-OP

Outside panel
Do Not Disturb System for Hotel Room



TAM-RF-DND-IP

inside panel
Do Not Disturb System for Hotel Room



TAM-RF-DND-DB

Dingdong bell

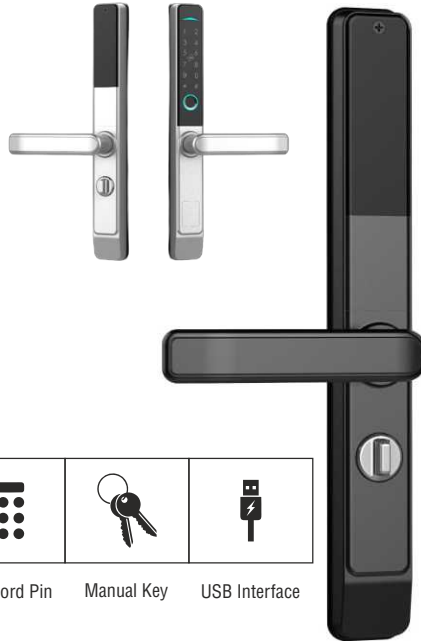
DIGITAL GLASS DOOR LOCKS



TAM-DL-SLIMSEC

Slim Digital Biometric Lock
for uPVC & Aluminium Profile Doors

NEW ARRIVAL
ORDER NOW >



Touch keypad with Backlight & Waterproof Surface

FEATURES :-

300 Fingerprint Capacity	300 Card Capacity	Mobile App	Password Pin	Manual Key	USB Interface

BIOMETRIC & DIGITAL GLASS DOOR LOCKS

NO Glass Cutout Required



TAM-DL-G2G-BLACK
For Swing Door



TAM-SDL-G2G-BLACK
For Sliding Door

Features of RFID Locks:

- 5 way unlocking - Fingerprint, IC Card Password, Key & Remote Control
- Easy installation, no need Glass Preparation
- Automatic locking function
- Dual combination access
- Touch keypad with backlight & waterproof surface
- LED color screen to view all operations
- USB interface for emergency power supply
- Rotary switch & unlock button inside
- Low battery indicator
- Door bell function
- Suitable for glass door thickness 10-12mm
- Finger print capacity: 100 pcs
- Card capacity: 1000 pcs
- Password capacity: 1000 pcs
- Admissible Temperature: (-20°C to 55°C)
- Power supply - 4 x AA battery (4.5V - 6.5V)



TAM-DL-G2G-REMOTE
Remote Control



DIGITAL BIOMETRIC DOOR LOCKS

TAM-DL-SUPREMA

Digital Biometric Residential Wooden Door Lock

Features

- 6 way unlocking - Fingerprint, RFID Card, Password, Mobile App (Bluetooth), Manual Key & Remote Control (optional)
- Suitable for Door Thickness – 38mm - 100mm
- Automatic locking function
- Door failure alarm/anti demolition alarm
- Effective unlock time δ 0.8 seconds
- Touch keypad with backlight & waterproof surface
- Voice prompt throughout the whole process
- Adopt Semiconductor fingerprint for fast recognition Speed
- USB interface for emergency power supply
- 304 Stainless Steel Material
- Low battery indicator
- Size – 315*75 mm, Net Weight – 6.5 Kg
- Suitable for Security and Wooden Doors
- Finger print: 100, Password: 10 (6-10 digits)
- Card capacity: 50, Manual key: 02
- Admissible Temperature: (-20°C to 60°C)
- Power supply - 8 x AA battery (Working Volt. - DC 6V)



TAM-DL-SECURA

Digital Biometric Residential Wooden Door Lock

Features

- 4 way unlocking - Fingerprint, RFID Card, Password, Manual Key
- Suitable for Door Thickness – 38mm - 100mm
- Automatic locking function
- Door failure alarm/anti demolition alarm
- Effective unlock time δ 0.8 seconds
- Touch keypad with backlight & waterproof surface
- Digital display throughout the whole process
- Adopt Semiconductor fingerprint for fast recognition Speed
- USB interface for emergency power supply
- Panel Material: Aluminium Alloy
- Low battery indicator
- Size – 380*75 mm, Net Weight – 4.5 Kg
- Suitable for Security and Wooden Doors
- Finger print: 100, Password: 10 (6-8 digits)
- Card capacity: 50, Manual Key: 02
- Admissible Temperature: (-20°C to 60°C)
- Power supply - 4 x AA battery (Working Volt. - DC 6V)



* 24 months warranty

DIGITAL BIOMETRIC DOOR LOCK

TAM-DL-MINISEC

Digital Biometric Residential Wooden Door Lock

Features

- 4 way unlocking - Fingerprint, RFID Card, Password, Manual Key
- Suitable for Door Thickness – 38mm - 65mm
- Automatic locking function
- Effective unlock time δ 0.8 seconds
- Touch keypad with backlight & waterproof surface
- Voice prompt throughout the whole process
- Adopt Semiconductor fingerprint for fast recognition Speed
- USB interface for emergency power supply
- Panel Material: Zinc Alloy
- Low battery indicator
- Size – 355x75 mm, Net Weight – 4.0 Kg
- Suitable for Security and Wooden Doors
- Finger print: 100, Password : 100 (6-8 digits)
- Card capacity: 100, Manual Key : 02
- Admissible Temperature: (-10°C to 60°C)
- Power supply - 4 x AA battery (Working Volt. - DC 6V)



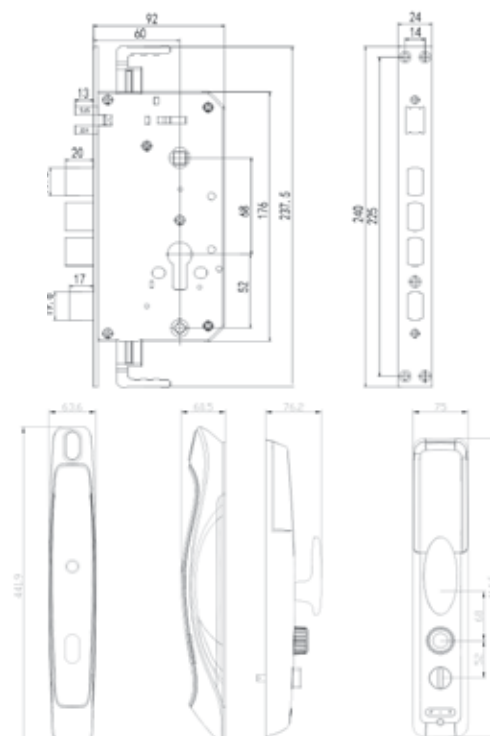
DIGITAL BIOMETRIC DOOR LOCK

TAM-DL-NIRVANA

Password & Fingerprint Wooden Door Lock

Features

- 4 way unlocking - Fingerprint, Card, Password, Manual Key & Mobile App Digital Door Viewer
- Mortise- 60-68mm Center Distance
- SS 304





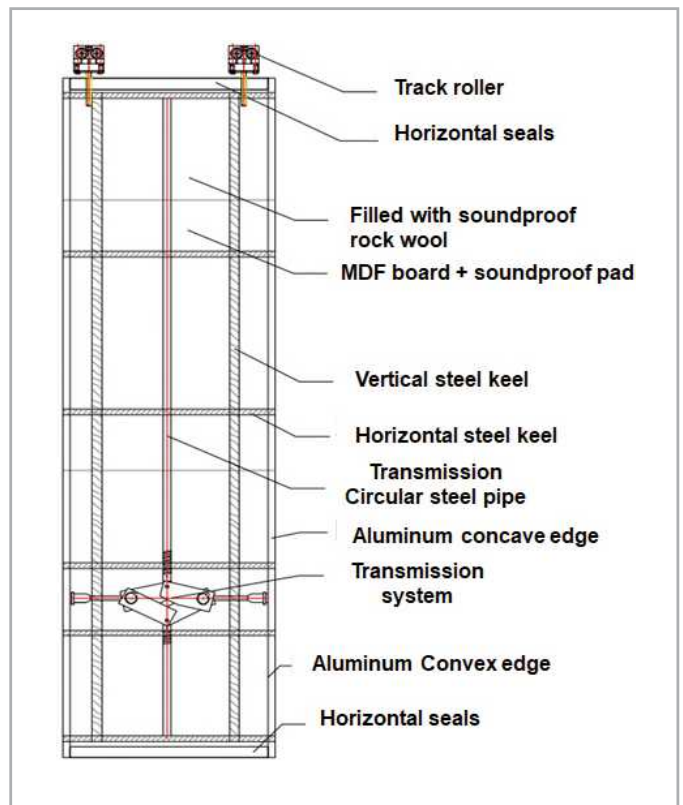
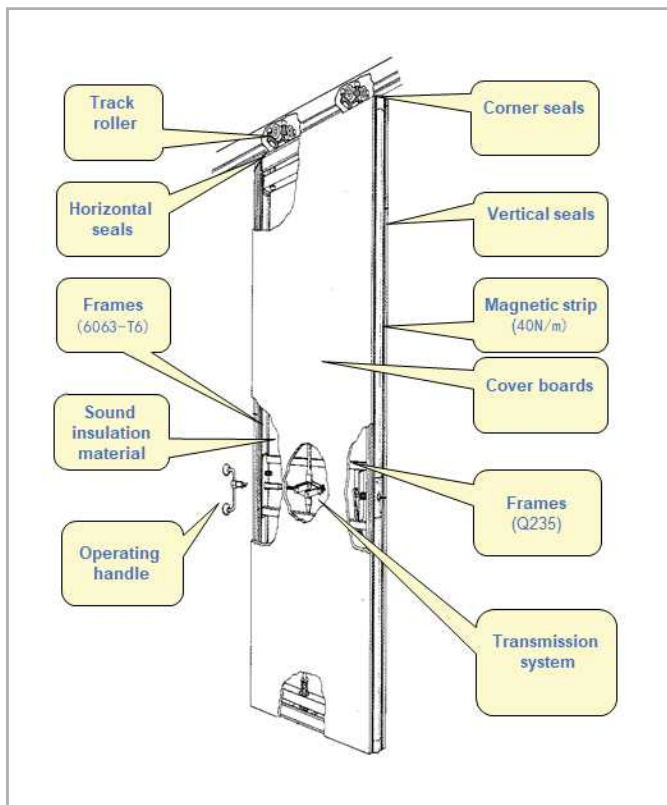
ACOUSTIC & GLASS MOVABLE PARTITIONS

TAITON features Acoustic Sliding Wall Partitions which are designed as non load bearing sliding and folding walls according to the sound rating required. These can maximize your potential for increased revenue by increasing your available space in completely flexible way.

We offer Acoustic sliding panels suspended from Aluminum track in ceiling to subdivide open areas which is flexible for events like weddings and conferencing simultaneously in a single big hall. We also offer Movable Glass Partition system with streamlined design without any visual obstruction therein. In addition, the movable glass partitions are more transparent where both upper and lower door patches are connected into integrity to ensure stability and smoothness so only one person can complete the whole partitioning process.



MANUAL ACOUSTIC SLIDING WALL PARTITION



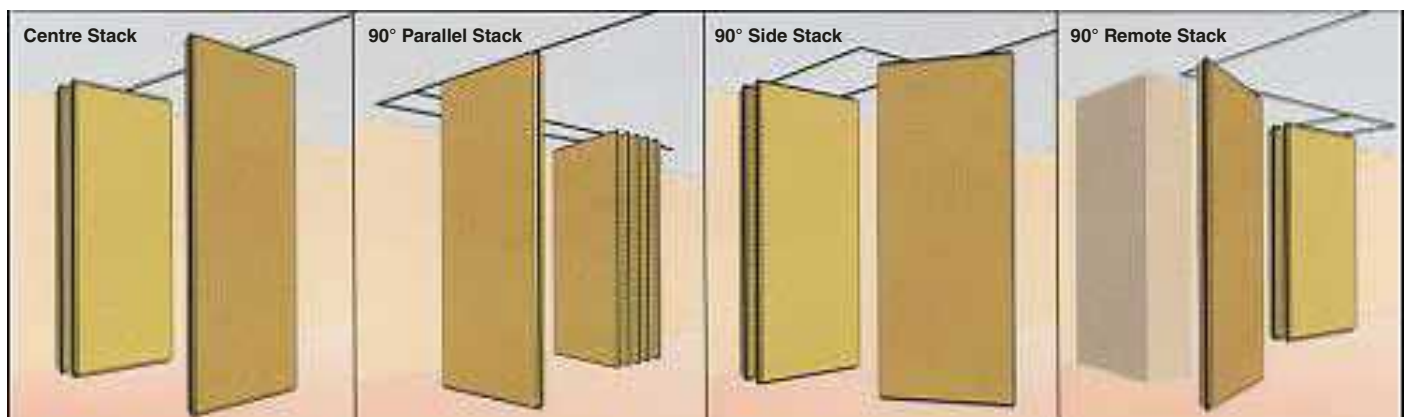
SPECIFICATIONS:

- Designed according to the sound rating required.
- Several choices for how the panels stack to the side of opening.
- Top Hung system without the need for a floor track.
- Manually operated Acoustic panels which can be linked together to form an acoustic sliding wall partition.
- High Quality multi-directional roller assemblies ensures smooth and silent movement.
- Panels will seal acoustically to track by sweep seals and to the floor by retractable seals.

STC	Panel Thickness	Max. Height	Max. Panel Width
35 dB	65mm	6mtr	1250mm
45 dB	85mm	12mtr	1250mm
53 dB	100mm	12mtr	1250mm

Semi Automatic & Automatic Acoustic Sliding Wall Partition also Available

PANEL STACKING OPTIONS



Any other panel stacking can be done as per site requirements



DOOR CONTROL HARDWARE

TAITON features innovative collection of Wooden/metal door fittings. Every fitting is designed to meet the modern design aesthetic requirements apart from the functional performance.

Manufactured from high quality materials, wide range of fittings are available in different finishes to select from to suit your needs.



LUXURY DOOR HANDLES

Brass



TMH- LX-B1
Finish: Copper, Antique, Satin, Rose Gold.



TMH- LX-B2
Finish: Copper, Antique, Satin, Rose Gold.



TMH- LX-B3
Finish: Copper, Antique, Satin, Rose Gold.



TMH- LX-B4
Finish: Copper, Antique, Satin, Rose Gold.



TMH- LX-B5
Finish: Copper, Antique, Satin, Rose Gold.



TMH- LX-B6
Finish: Copper, Antique, Satin, Rose Gold.



TMH- LX-B7
Finish: Copper, Antique, Satin, Rose Gold.

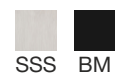


TMH- LX-B8
Finish: Copper, Antique, Satin, Rose Gold.



TMH- LX-B9
Finish: Copper, Antique, Satin, Rose Gold.

DOOR HANDLES, MORTISE LOCK BODY & EP CYLINDER



DOOR HANDLES



TMH-11
D-Type Mortise Handle



TMH-22
Tubular Mortise Handle

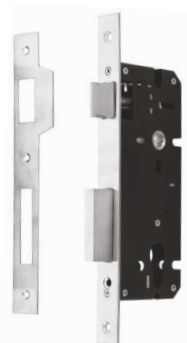


TMH-33
Tubular Mortise Handle



TMH-33N
Tubular Mortise Handle for
Narrow Style Doors

MORTISE LOCK BODY



TML-45 (45x85mm)
TML-35 (35x85mm)
TML-30 (30x85mm)
Lock Body for Wooden Doors
with Latch & Dead Bolt



TML-DL-45mm
TML-DL-35mm
TML-DL-30mm
Dead Lock for
Steel/Wooden Door



TML-L-43mm
Latch Bolt for
Steel/Wooden Door



TML-20 (20x85mm)
Narrow Style Lock Body for
Al./Wooden Doors with
Latch & Dead Bolt



TML-HL-20mm
Hook Lock for
Steel/Wooden Door

EURO PROFILE CYLINDERS



TMC-22-K2K-N
Both Side keys
(Available in 60/70/80mm)



TMC-22-K2N-N
One Side key & One Side Knob
(Available in 60/70/80mm)



TMC-22-BT-N
One Side Knob & Other Side
Coin Release
(Available in 60/70/80mm)

HALF CYLINDERS



TMC-22-HC-K-45
Half Cylinder with 3 Keys



TMC-22-HC-N-45
Half Cylinder with Knob

CYLINDRICAL KNOB LOCKS



TCKL-11
Knob Lock with Key Operation
& Push Button



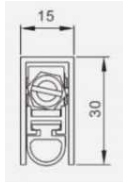
TCKL-22
Knob Lock with Push Button &
Coin Release

AUTO DROP DOWN DOOR SEAL

TA-DWDS

Features:

- Available in 900mm & 1000mm
- Unilateral Sealing
- Max. Sealing Height: 12mm
- Slotting Width: 15mm
- Shell Material: Aluminium
- Strip: PVC



INDICATOR ESCUTCHEON



TIL-RA
Indicator with Knob



TML-IL
Indicator Lock Body



TIL-RB
Indicator with Turn Latch Bolt

SS BUTT HINGES



TA-BH 4BB 5x3x3
Four Ball Bearings

SS 304



TA-BH-4BB 4x3x3
Four Ball Bearings



TA-BH-NBB 5x2.5x2.5
Without Ball Bearings

SS 202



TA-BH-NBB 4x2.5x2.5
Without Ball Bearings



TA-BH-SC 5x3x3
Soft Closing Hinges



TA-BH-SC 4x3x3
Soft Closing Hinges

DOOR ACCESSORIES



TA-DE-1
Door Viewer



TA-DC-1
Door Chain



TA-DG-1
Door Guard



TA-CFB-300
Concealed Flush Bolt

SS 304



TA-DST-1
Door Stopper



TA-DB-1
Door Buffer-PVC White 3"



TA-DST-4M
Magnetic Door Stopper



TA-DST-2
Door Mounted Hanging Type Stopper



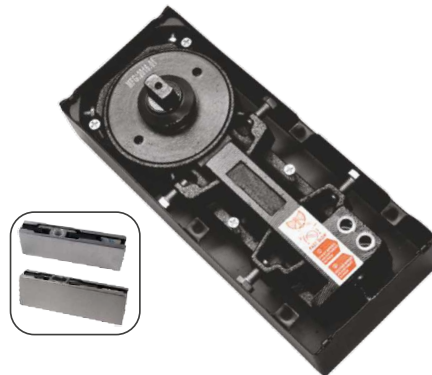
Tower Bolt

STANDARD TYPE	
TA-TB-4"	TA-TB-10"
TA-TB-6"	TA-TB-12"
TA-TB-8"	TA-TB-18"

SINGLE CYLINDER FLOOR SPRING



TFS-5400-TP/BP
Single Cylinder Floor Spring for Wood/Aluminium Door with Accessories (Maximum Door Weight Upto 60Kg)



TFS-6000-GD
Single Cylinder Floor Spring for Glass Door with Top & Bottom Patch (Maximum Door Weight Upto 70Kg)



TFS-6400
Single Cylinder Floor Spring for Wood/Aluminium/Glass Door (Maximum Door Weight Upto 80Kg)

DOUBLE CYLINDER FLOOR SPRING



TFS-RV-8400
Single Cylinder 360 Revolving Floor Spring (Max Door Weight Upto 85Kg) 5,00,000 Cycle Tested



TFS-8400
Double Cylinder Floor Spring (Max Door Weight Upto 100Kg) 5,00,000 Cycle Tested

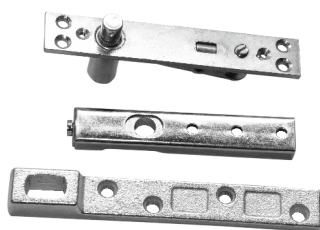


TFS-9400
Double Cylinder Floor Spring (Max Door Weight Upto 150Kg) 5,00,000 Cycle Tested



TFS-10400
Double Cylinder Floor Spring (Max Door Weight Upto 300Kg) 5,00,000 Cycle Tested

ACCESSORIES FOR FLOOR SPRING



TFS-ACC-TP/BP
Top & Bottom Pivot for Wooden/Aluminium Door



TFS-ACC-MH-1
Mini Floor Hinge Compatible with Patch Fittings

HYDRAULIC FLOOR HINGE



TCFH-100
Hydraulic Floor Hinge
• Max door Weight: Upto 100kg



 SILVER BM

OVERHEAD DOOR CLOSER



TSK-60

- With Standard Arm
- Maximum door weight: 60kg
- Maximum Door Width: 950mm
- 3,00,000 Cycles Tested



TSK-80

- With Standard Arm
- Maximum door weight: 80kg
- Maximum Door Width: 1100mm
- 3,00,000 Cycles Tested



TSK-800

- With Track Arm
- Maximum door weight: 80kg
- Maximum Door Width: 1100mm
- 3,00,000 Cycles Tested



TSK-900

- With Track Arm
- Maximum door weight: 80kg
- Maximum Door Width: 1200mm
- 5,00,000 Cycles Tested



CONCEALED DOOR CLOSER



TCD-3500

- With Track Arm
- Maximum door weight: 60kg
- Maximum Door Width: 950mm
- Minimum Door Thickness for Installation: 35mm
- 3,00,000 Cycles Tested

ACCESSORY



TSK-ACC-900-PLATE

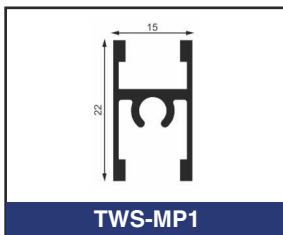
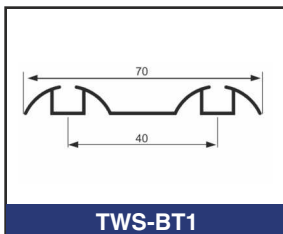
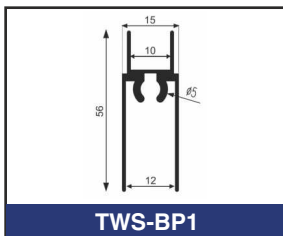
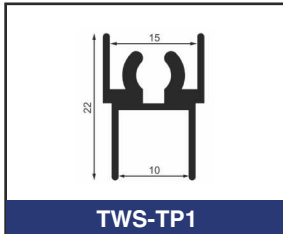
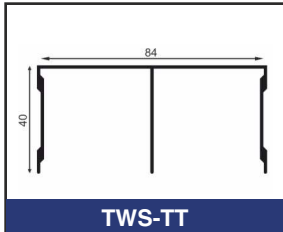
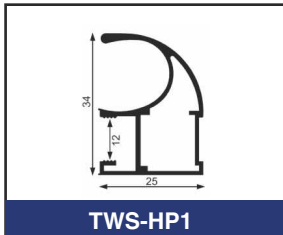
- Plate for Mounting Door Closer on Glass

WARDROBE SLIDING SYSTEMS

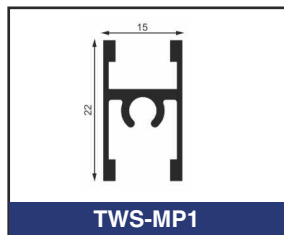
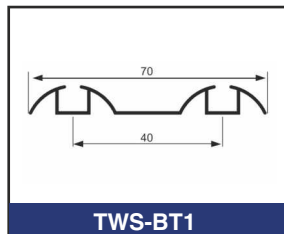
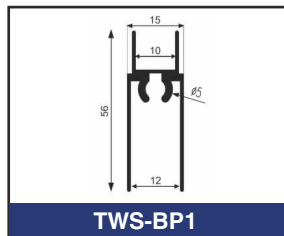
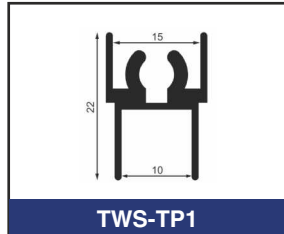
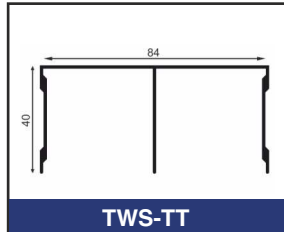
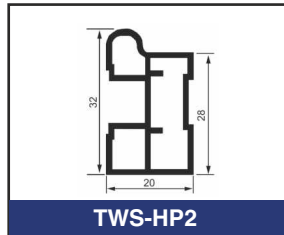


TAITON features Wardrobe sliding systems in all sort of sizes and designs to suit your clothes, style and space. These systems are manufactured using premium grade material in superior surface finish. Our Wardrobes are very stylish and have the ability to give an elegant look to home or hotel bedroom.

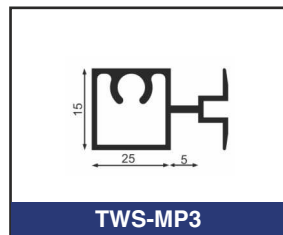
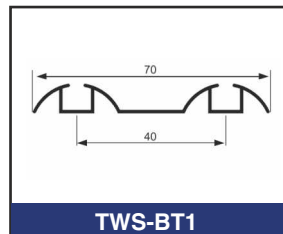
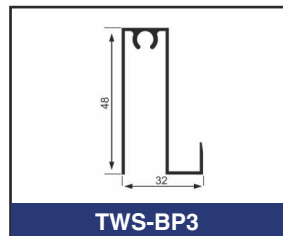
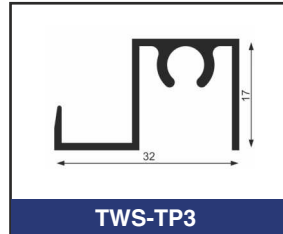
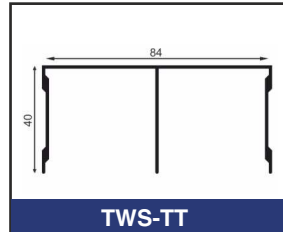
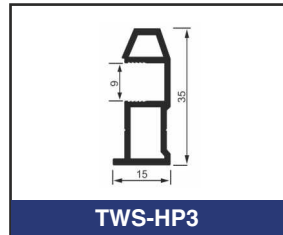
CARNIVAL



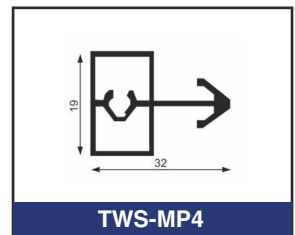
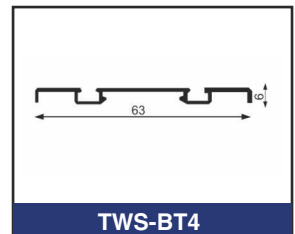
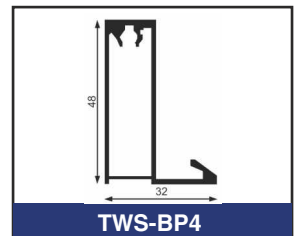
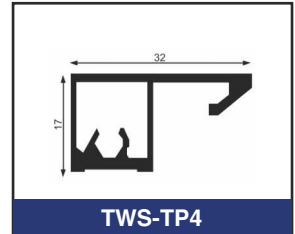
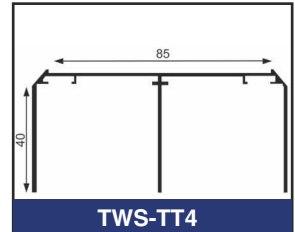
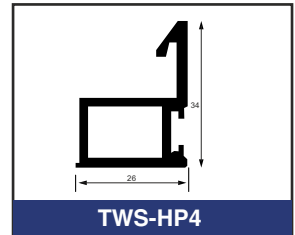
COSTA



CELEBRITY



CAPRI



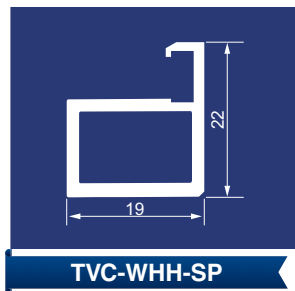
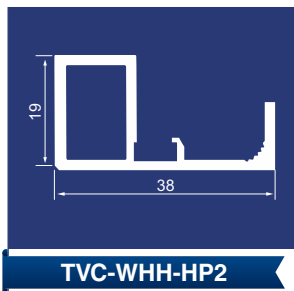
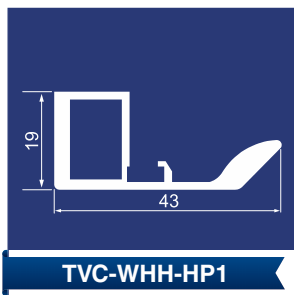
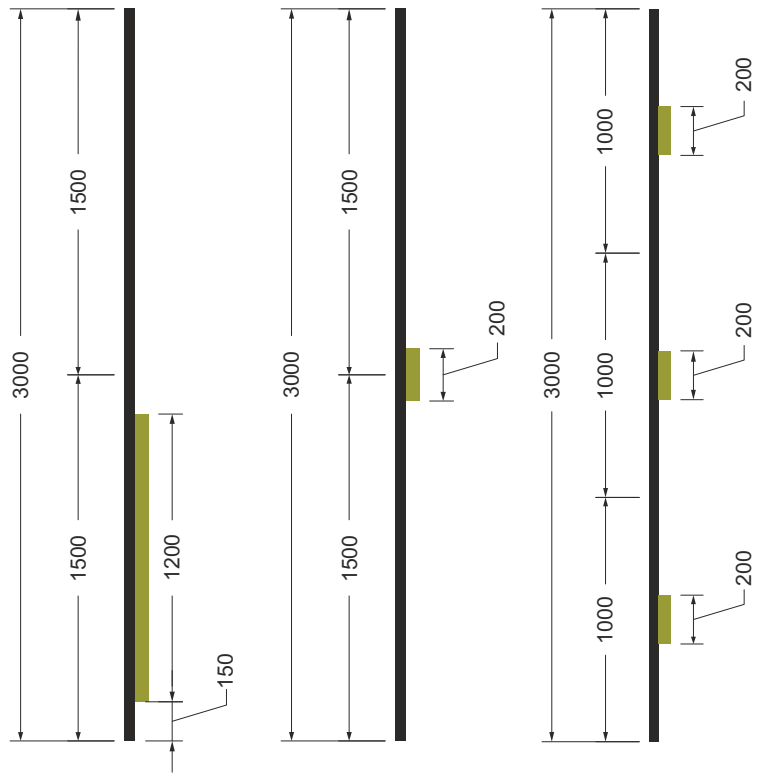
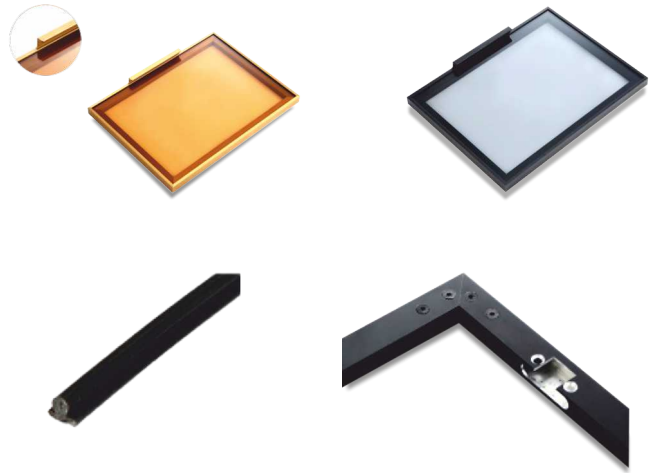
WARDROBE HYDRAULIC HINGES

Features:-

- ✦ Door Weight Capacity:- 20kg Max
- ✦ Door Hinge with 3D adjustment
- ✦ Opening angle 100
- ✦ Max Door Size: 450mm (W)x2400mm (H)
- ✦ Profile With inbuilt handle 200mm & 1150mm
- ✦ Handle Profile available in Left & Right option
- ✦ Suitable for 5mm thick Glass

Finish Color:-

- ✦ Silver, Rose Gold, Brush Gold & Black Matte



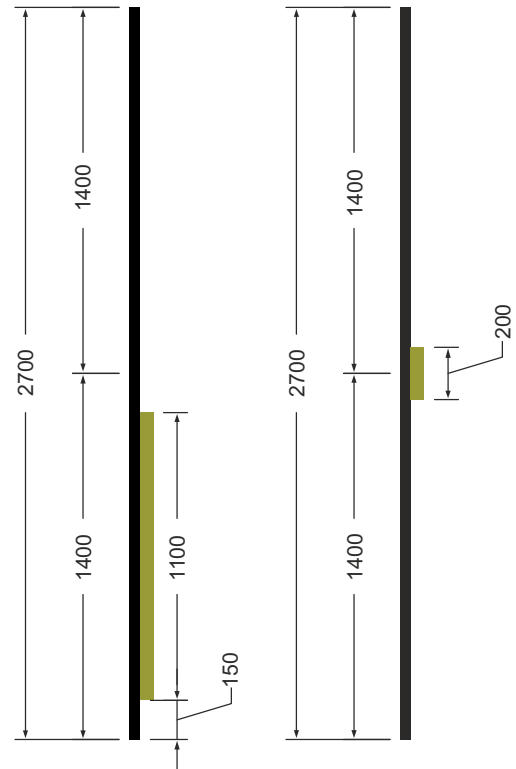
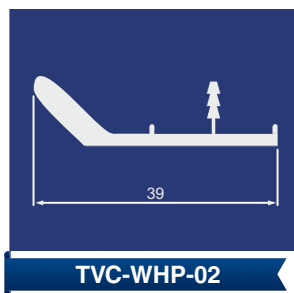
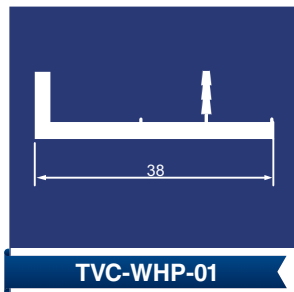
WARDROBE EDGE HANDLES

Features:-

- ✦ Edge handles for openable wooden wardrobes
- ✦ Profile Length: 2700mm
- ✦ Suitable for 18mm thick Ply
- ✦ Handle Profile available in Left & Right option

Finish Available:-

- ✦ Silver, Rose Gold, Brush Gold & Black Matte





RAILINGS

TAITON features Railing systems in Stainless Steel and Aluminum. We offer wide range of Spigots to create Glass Fencing. We also offer Clear line Railing systems to create seamless glass railings for balconies, atriums, staircases etc.

Manufactured in Stainless Steel grade 304, it ensures durability and low maintenance covering the safety and aesthetical requirements.



SPIGOTS & CLEAR LINE RAILING SYSTEMS



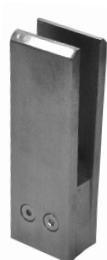
SS 304

Finish: SSS/PSS

SPIGOTS



TBF-SG-B-6
6" Spigot With Base



TBF-SG-6
6" Spigot Without Base



TBF-SG-B-6W
6" Spigot With Base
(without cutout)



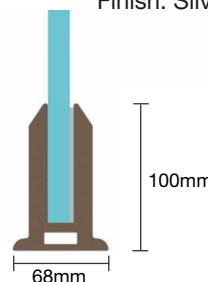
TBF-SG-B-12
12" Spigot With Base



TBF-SG-B-9
9" Spigot With Base



TBF-SG-BR-9
9" Spigot With Base (Round)

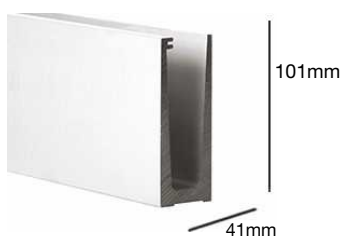


TBF-SG-AL-4
Floor to Glass Clamp
Length 70mm

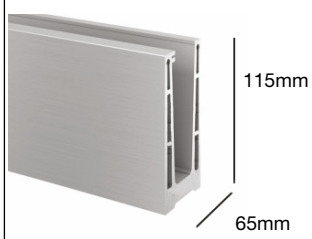
ALUMINIUM

Finish: Silver Anodized

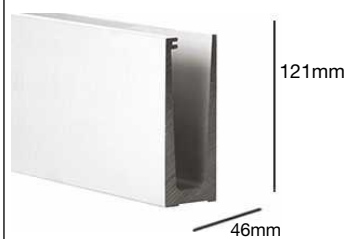
CLEAR LINE RAILING SYSTEM



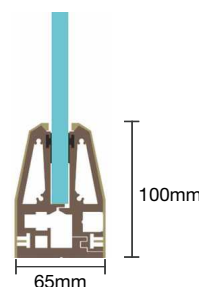
TCL-01
Floor to Glass Clamp
Length : 3mtr



TCL-02
Floor to Glass Clamp
Length : 3mtr



TCL-03
Floor to Glass Clamp
Length : 3mtr



TCL-04
Floor to Glass Clamp
Length : 140mm

ALUMINIUM

Finish: Silver Anodized

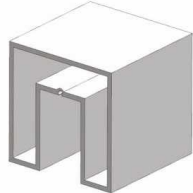


TCL-PC-04
Profile Cover for TCL-04
Length : 4mtr

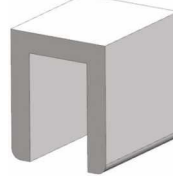
FITTINGS FOR CLEAR LINE RAILING



TRF-UTB-AL-50
50mm Slotted Handrail
Length : 3mtr



TRF-UTB-RCT-AL-50-50
50x50mm Slotted
Rectangular Handrail
Length : 3mtr



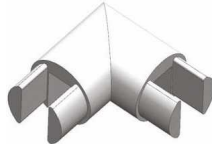
TRF-UTB-RCT-AL-21-25
21x25mm U Type
Rectangular Handrail
Length : 3mtr



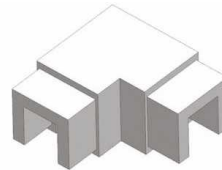
TRF-UTB-EC-AL-01
End Cap for TRF-UTB-AL-50



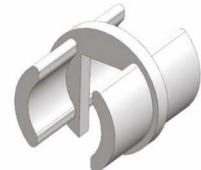
TRF-UTB-EC-AL-02
End Cap for
TRF-UTB-RCT-AL-50-50



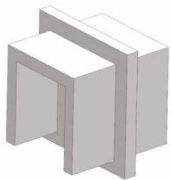
TRF-UTB-AL-90
Corner Elbow for
TRF-UTB-AL-50



TRF-RCT-AL-90
Corner Elbow for
TRF-UTB-RCT-AL-50-50



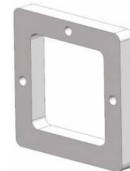
TRF-UTB-AL-180
180° Connector for
TRF-UTB-AL-50



TRF-RCT-AL-180
180° Connector for
TRF-UTB-RCT-AL-50-50



TRF-UTB-WC-AL-01
Wall Connector for
TRF-UTB-AL-50



TRF-UTB-WC-AL-02
Wall Connector for
TRF-UTB-RCT-AL-50-50



TRF-UTB-EC-AL-03
End Cap for TCL-04

SS 304
Finish: SSS



TRF-UTB-42
Slotted Round Handrail
(25 & 42mm)



TRF-UTB-90
90° Connector for
TRF-UTB-42



TRF-UTB-ADJ-90
90° Adjustable Connector for
TRF-UTB-42



TRF-UTB-180
180° Connector for
TRF-UTB-42



TRF-UTB-EC
End Cap for
TRF-UTB-42



TRF-UTB-WC
Wall to Handrail Connector for
TRF-UTB-42



TRF-UTB-RCT-60-40
Slotted Rectangular Handrail
(25x21, 40x40 & 60x40)



TRF-UTB-RCT-90
90° Connector for
TRF-UTB-RCT-60-40

FITTINGS FOR CLEAR LINE RAILING



TRF-UTB-RCT-ADJ-90
90° Adjustable Connector for
TRF-UTB-RCT-60-40



TRF-UTB-RCT-180
180° Connector for
TRF-UTB-RCT-60-40



TRF-UTB-RCT-EC
End Cap for
TRF-UTB-RCT-60-40



TRF-UTB-RCT-WC
Wall to Handrail Connector for
TRF-UTB-RCT-60-40

RAILING ACCESSORIES

SS 304
Finish: SSS/PSS



TRF-GH-01
Embedded Wall to Glass holder



TRF-GH-02
Embedded Wall to Glass holder



TRF-HR-01
Glass Mounted Adjustable
Handrail Support



TRF-HR-W-01
Wall Mounted Adjustable
Handrail Support



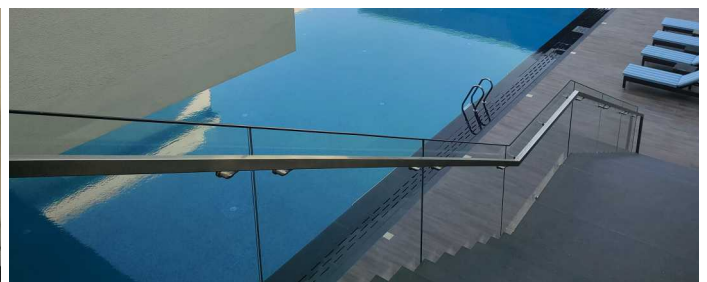
TRF-HR-02
Glass Mounted Adjustable
Handrail Support



TRF-GC-01
Round Glass Clamp for
Flat Surface



TRF-GC-02
Round Glass Clamp for
Ø50mm Tube



SMART SWITCH FILM

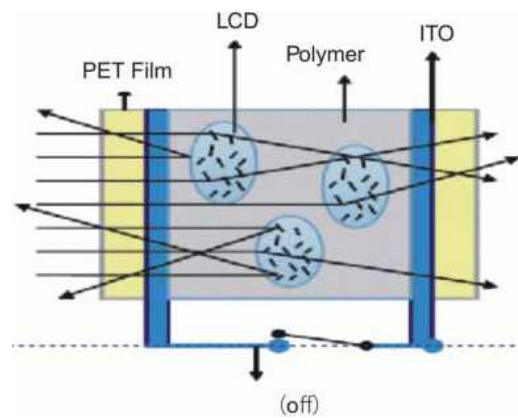
Introducing



Smart film is new electronic controlled optical product, with a scientific name of polymer dispersed liquid crystal film (PDLC FILM). In the switchable privacy film, small droplets of liquid crystal at micron meter level is dispersed in a polymer matrix, which is kept between two films. In order to produce this PDLC film, special process is required.

Applications:

- Corporate Offices
- Airports
- Hotels
- Medical Institutions
- Jewellery Showrooms
- Banks
- Shopping Malls
- Museums
- Residences



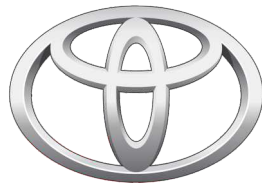
FILM PARAMETERS

Test Parameter		State	Results
Optics	Transmittance (parallel light)	Power on	About: 80%(+/-3%)
		Power off	1%
	Haze	Power on	4%
		Power off	90%
	Visual angle	Power on	about: 150°
	Screening of UV Light	Power on	>99%
Power off		>99%	
Screening of IR Light	Power on	>30%	
	Power off	>90%	
Electricity	(Power Adapter) Vop	Power on	60V AC/ 45V AC
	Responsive time	Power on → Power off	200 (ms)
		Power off → Power on	10 (ms)
Power	Power on	about: 5 W/m ²	
Size	Thickness	/	0.4mm
Environment	Operating Temperature	/	-10°C to 60°C
	Storage Temperature	/	-20°C to 60°C
Life	Life time	Power on	more than 50000Hr

* 24 months warranty



JAIN SADGURU IMAGE'S
CAPITAL PARK



TOYOTA



HYUNDAI



BOSCH



Notes:

Disclaimer: Product Visuals, Information & Specifications shown in this catalogue are illustrative in nature. The Customers are requested to kindly check Technical Specifications & Details before placing orders. Company will not be liable for any such loss to customers for technically unsuitable/unfit products. TAITON reserves the right to change or modify the specifications any time without prior notice/information. The Company shall only be responsible for defects covered under the product warranty and shall be in no way accountable for any defects (including but not limited to packaging, installation instructions, manuals, specification instructions and care maintenance instructions), after the delivery of goods to the Customer. All risk and obligations in the goods and products delivered by the Company passes to the Buyer immediately upon delivery to the Buyer.

- 1 Agra
- 2 Bangalore
- 3 Bhubaneswar
- 4 Calicut
- 5 Chandigarh
- 6 Chennai
- 7 Coimbatore
- 8 Dehradun
- 9 Dharamshala
- 10 Gujrat
- 11 Gurgaon
- 12 Guwahati
- 13 Haridwar
- 14 Hyderabad
- 15 Kochi
- 16 Kolhapur

OUR PRESENCE



- 17 Kolkata
- 18 Kota
- 19 Lucknow
- 20 Ludhiana
- 21 Madurai
- 22 Mohali
- 23 Mumbai
- 24 New Delhi
- 25 Nashik
- 26 Noida
- 27 Pune
- 28 Salem
- 29 Shimla
- 30 Trivandrum
- 31 Vijayawada
- 32 Vizag



Scan QR Code
for Website

Follow us on:



BEST SUITED FOR



OUR PRODUCT RANGE

Maxia | Tavic | Automatics | Electronic Locks | Movable Partitions
Glass Hardware | Door Control Hardware | Smart Switch Film | Railing

HYDERABAD

#8-3-677/21, Sri Krishna
Devaraya Nagar, Yellareddyguda,
Hyderabad - 500073
Tel : +91-9063090009
E-mail : customercare@taiton.in

KERALA (CALICUT)

Door No 65/3058, Ground Floor
Meridiyan Mansion Shopping
Complex Near Manorama Jn,
Wayanad Road, Calicut – 673001
Ph no: 0495 4013355, 9946104308,
9946104309, 8129124452

TAMIL NADU (CHENNAI)

+91 9677006697

ANDHRA PRADESH (VIJAYAWADA)

+91 9553527711

NEW DELHI

D-15A, FF, Lajpat Nagar II,
New Delhi - 110024
Tel : +91-11-45040117
E-mail : taitondelhi@taiton.in

KERALA (TRIVANDRUM)

TC 84/2248 (1), Ground floor
NH Bypass, Enchakkal
Thiruvananthapuram Pin – 695008
Ph no: 0471 2476315, 8129124452

BANGALORE

SM Lake Pride,#168,
13th Main Road,
Sector 5, HSR Layout,
Tel : +91-9591491115
Bangalore - 560102

KERALA (COCHIN)

Door No. 42/2200 C to C5
Arakkakadavu Road
Vennala P.O, Ernakulam - 682028
Ph no: 0484-3522156
9946104308, 9946104309
Email :vm@taiton.in

MAHARASTRA (PUNE)

+91 8999920000

AHMEDABAD, RAJKOT, SURAT

EXPORTS

+91 7428097601
exports@taiton.in

www.taiton.in

Auth. Partner