

Premium®



Brass
Fittings



PREMIUM: Precision, Performance, Perfection in Hardware

Since 1994, we've been on a mission to blend quality and customer satisfaction into every piece of hardware we craft. Welcome to PREMIUM, where our name says it all!

Our Story

It all started in 1994, and since then, we've never looked back. Our relentless pursuit of excellence has led us to establish a state-of-the-art manufacturing facility in Jamnagar, Gujarat, India.

What We Do

PREMIUM is your go-to brand for exclusive building hardware fittings. Our products are known for their stellar performance, thanks to cutting-edge technology and machines that churn out hardware with zero defects. Whether you need a small batch or a massive order, we've got the capacity and the expertise to deliver consistent, top-notch quality every time.

Why Choose PREMIUM ? Top-Notch Quality

We don't just aim for high performance; we hit the bulls eye. Our sophisticated production facilities ensure that every product that leaves our plant is flawless.



Premium[®]



Advanced Infrastructure

Our facility isn't just about making great hardware; it's about ensuring it gets to you in perfect condition. Our advanced packaging equipment guarantees your products are safe and sound during transit.

Innovation at Our Core

Our dedicated R&D team is the heartbeat of our innovation. They're always on the hunt for ways to enhance our current offerings and develop new products that set industry standards.

PREMIUM is more than just a brand; it's a promise of quality, innovation, and unmatched performance. Join us on our journey of creating hardware that's not only functional but also phenomenal.

The PREMIUM Advantage

Precision : We use the latest technology to ensure every piece of hardware is crafted to perfection.

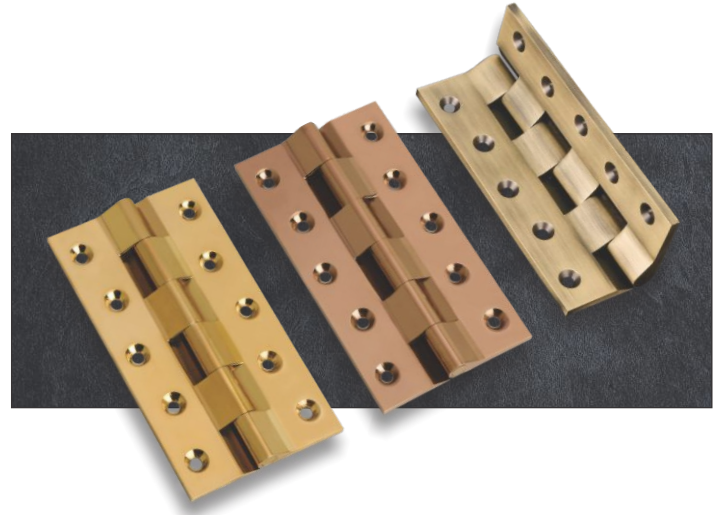
Performance : Our products are built to last and perform exceptionally in every setting.

Perfection : From production to packaging, we strive for excellence in every step.

Contents

BRASS HINGES

CODE	PRODUCTS	PAGE NO.
P0001-P0003	Brass Conceal Hinges	02
P0011-P0024	Brass Butt Hinges	04
P0031-P0040	Brass Extra Heavy But Hinges / Locking Hinges	04
P0041-P0091	Brass Railway Hinges	05
P0111-P0139	Brass Bearing Hinges (Flat Tip / Fancy Tip)	06
P0141-P0144	Door Closer Hinges	06
P0151-P0162	Parliament Hinges	07
P0171	Table Hinges	07
P0181-P0228	Brass L Hinges (Regular / Locking)	08
P0241-P0243	Brass W - Hinges	09
P0251-P0256	Brass Z - Hinges	09
P0261-P0273	Brass Duck W Hinges	09



BRASS TOWER BOLT

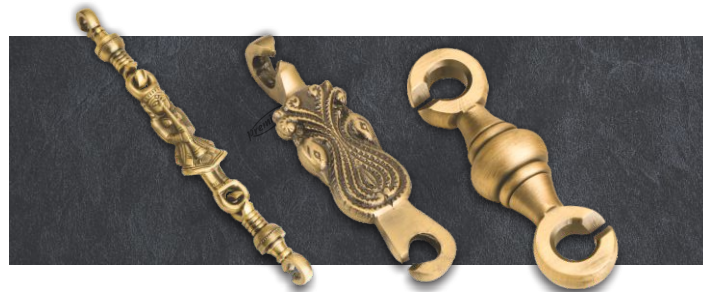
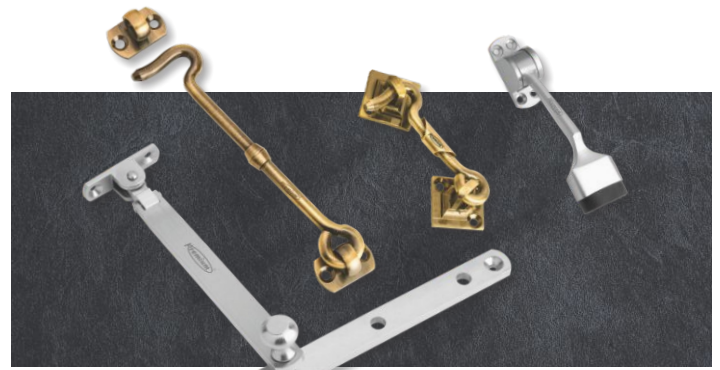
CODE	PRODUCTS	PAGE NO.
P0300-P0303	Tower Bolt - 6 mm (1/4")	11
P0310-P0313	Tower Bolt - 8 mm (5/16")	11
P0321-P0330	Tower Bolt - 9 mm (3/8")	11
P0341-P0354	Tower Bolt - 12 mm (1/2") Regular	12
P0361-P0374	Tower Bolt - 12 mm (1/2") Heavy Plate	12
P0391-P0402	Tower Bolt - 16 mm (5/8")	13
P0411-P0421	Tower Bolt - 9 mm Crancked	13
P0431-P0444	Tower Bolt - 12 mm Crancked	13
P0451-P0464	Tower Bolt - New Crancked	14
P0471-P0478	Tower Bolt Zorik Crancked Medium 8 mm Rod	14
P0491-P0504	Tower Bolt Zorik Crancked Heavy 9mm Rod	14
P0521-P0531	Tower Bolt Audi Zorik Medium 8 mm Rod	15
P0541-P0554	Tower Bolt Audi Zorik Heavy 9 mm Rod	15
P0571-P0582	Tower Bolt Audi Zorik Extra Heavy 12 mm Rod	15
P0591-P0602	Tower Bolt - 8 mm Diamond / Diamond Audi	16
P0611-P0622	Tower Bolt - 10 mm Diamond / Diamond Audi	16
P0631-P0641	Tower Bolt - 12 mm Diamond / Diamond Audi	16
P0651-P0659	Tower Bolt - 16 mm Diamond / Diamond Audi	17
P0671	Tower Bolt - 8 mm Nano	17
P0691-P0692	Tower Bolt - Capsule	17
P0701-P0703	Baby Latch - Zen	17
P0711-P0713	Tower Bolt - Patti	17
P0721	Tower Bolt - Kent	18
P0731	Tower Bolt - Parliament	18
P0741-P0751	Tower Bolt - 19 mm Conceal	18
P0761-P0771	Tower Bolt - 25 mm Conceal	18
P0781-P0786	Tower Bolt - Round Conceal	18

Contents



BRASS FITTINGS

CODE	PRODUCTS	PAGE NO.
P0800-P0801	Gate Hook	20
P0811-P0814	Gate Hook - Extra Heavy	20
P0821-P0822	Windows Stay	20
P0831	Windows Stay - Deluxe	20
P0841	Windows Stay - Solid	20
P0851	Windows Stay - Sliding	21
P0861	Brass Conceal Flat Latch	21
P0871	Door Chain	21
P0881	Panel Lock	21
P0891	Kitchen Brackets	21
P0901	Push Magnet	21
P0911-P0915	Ball Bearing Pivot (Side/Centre)	22
P0921-P0928	Real Bearing Pivot (Side/Centre)	22
P0931-P0932	Mala Tadi	22
P0941-P0944	Rod Latch	22
P0951-P0955	Door Stopper	23
P0961	Door Magnet	23
P0971	Brass Door Holder	23
P0981	Floor Mount Door Stop	23
P0991-P1021	Aldrop - (Plain) (Fancy)	24
P1031-P1033	Brass Window Handle	25
P1041-P1043	Brass Window Handle	25
P1051-P1053	Brass Window Handle	25
P1061-P1063	Brass Window Handle	25
P1071-P1075	Hooks	26
P1076	Hooks Square	26

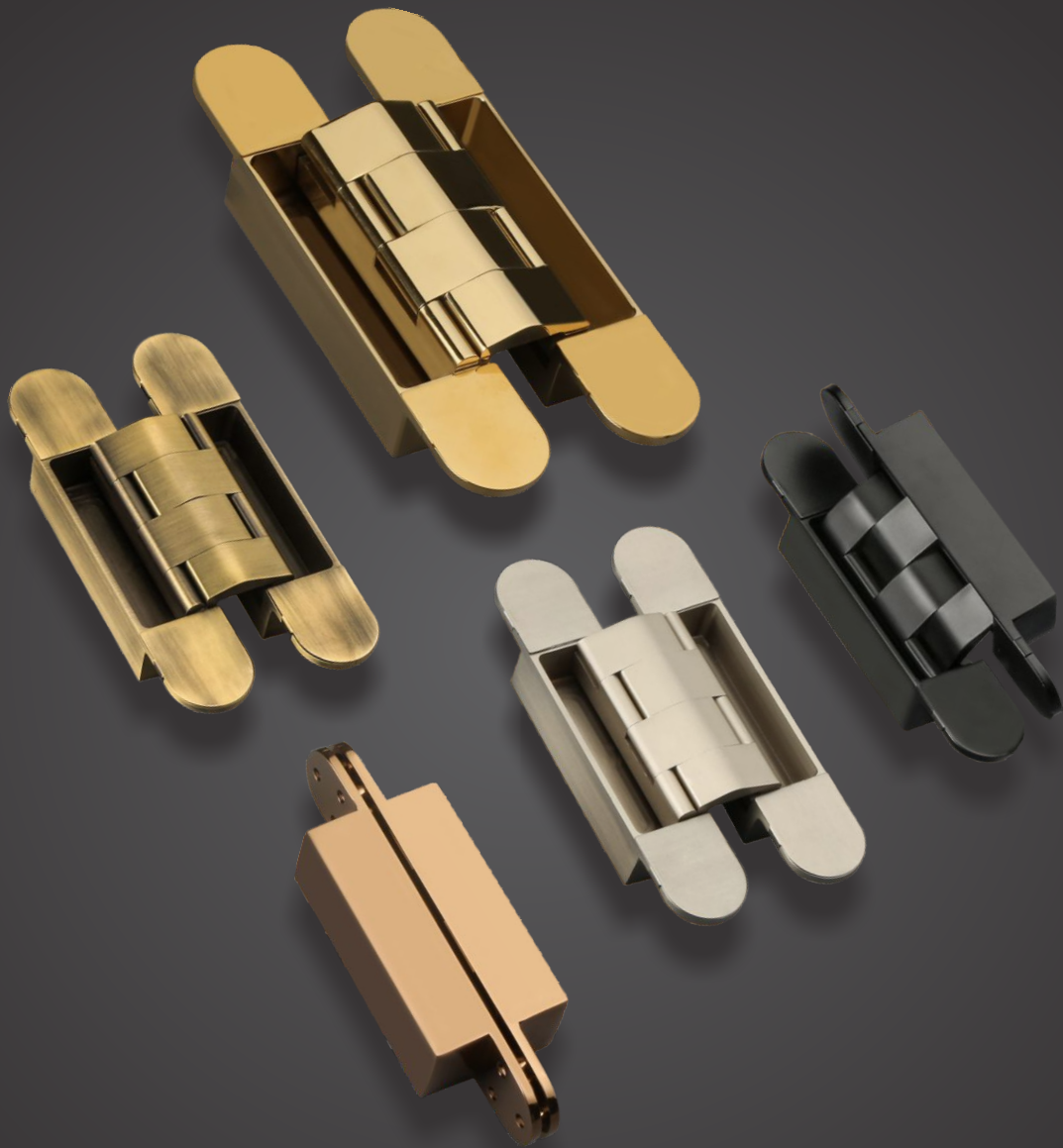


BRASS ZULLA ACCESSORIES

CODE	PRODUCTS	PAGE NO.
P1101-P1104	Zulla Set - Small Kadi	28
P1111-P1119	Zulla - Animal Kadi	28
P1131-P1140	Zulla Set 12" (300 mm)	29
P1141-P1144	Zulla Set - 6" (150mm) & 8" (300mm)	30
P1151-P1154	Zulla Set - 8" (200mm) & 12" (300mm).	30
P1161-P1164	Zulla Set 8" (200 mm)	30
P1171-P1172	Zulla Set - Patti 6" (150 mm)	30
P1181-P1182	Zulla 19 mm Pipe	31
P1191-P1192	Zulla Hinges	31
P1201	S Hook	31
P1211	W Hook	31
P1221	D Hook	32
P1231	Rajwadi Hook	32
P1241	Anchor Hook	32
P1251	L Corner	32
P1261-P1263	Bearing Kada	33
P1271	Bottom Kada	33

BRASS GLASS FITTINGS

CODE	PRODUCTS	PAGE NO.
P1301-P1302	D Brackets	35
P1311	Corner Brackets	35
P1321-P1330	Folding Brackets	35
P1341-P1342	Folding Brackets - Corner	35
P1351-P1352	Mirror Brackets Fancy	35
P1361-P1367	Patti Pivot	36
P1371-P1374	Glass Pivot	36
P1381-P1383	Bat	36
P1391-P1392	Bat Delux	36
P1401-P1403	L Bat	36
P1411-P1415	Crystal Mirror Cap	37
P1421-P1423	Crystal Mirror Stand	37
P1431-P1439	Round Flat Mirror Cap	37
P1441	Swastik Mirror Cap	37
P1451-P1456	Square Flat Mirror Cap	37
P1461-P1466	Square Royal Mirror Cap	38
P1471-P1476	Royal Pyramid Mirror Cap	38
P1481-P1488	Pyramid Mirror Cap	38
P1491-P1496	Mirror Cap	38
P1501-P1504	Mirror Dome	38
P1511-P1515	Flower Dome	39
P1521-P1523	Mandir Dome	39
P1531-P1533	Mirror Stand	39
P1541-P1548	Mirror Screw C.P.	39
P1551-P1554	Glass Hinges - Ply to Glass	40
P1561-P1564	Glass Hinges - Glass to Glass	40
P1571-P1574	Glass Hinges - Direct to Glass	40
P1581	Glass Hinges - Hole to Glass	40
P1591-P1592	Rope Fittings	40
P1601-P1602	Rope Fittings - Shelf Support	41
P1611-P1613	Duster Guard	41
P1621-P1622	Shelf Bracket	41

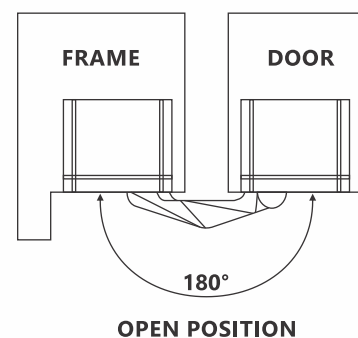
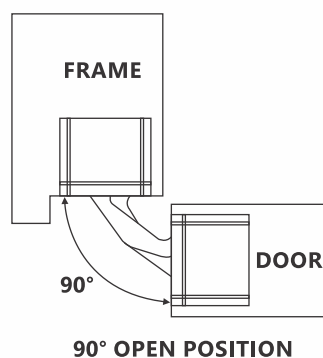
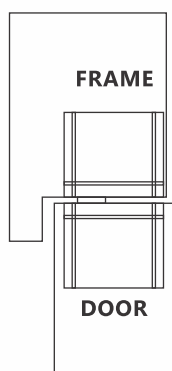
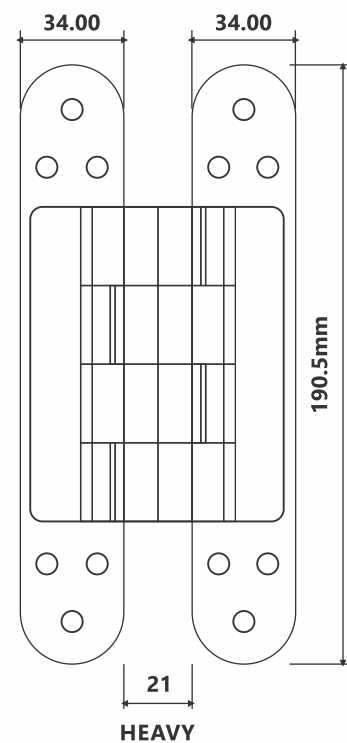
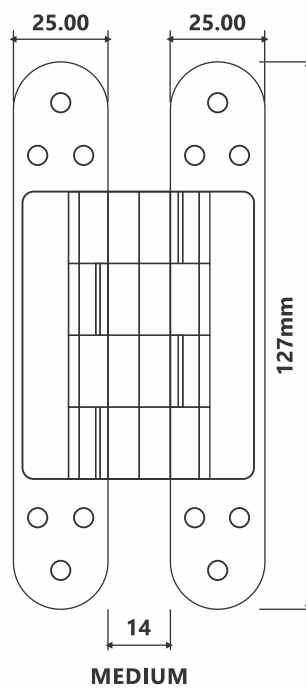
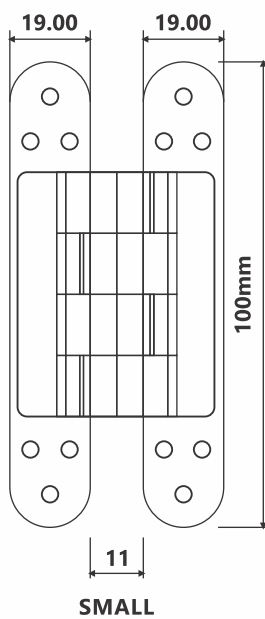


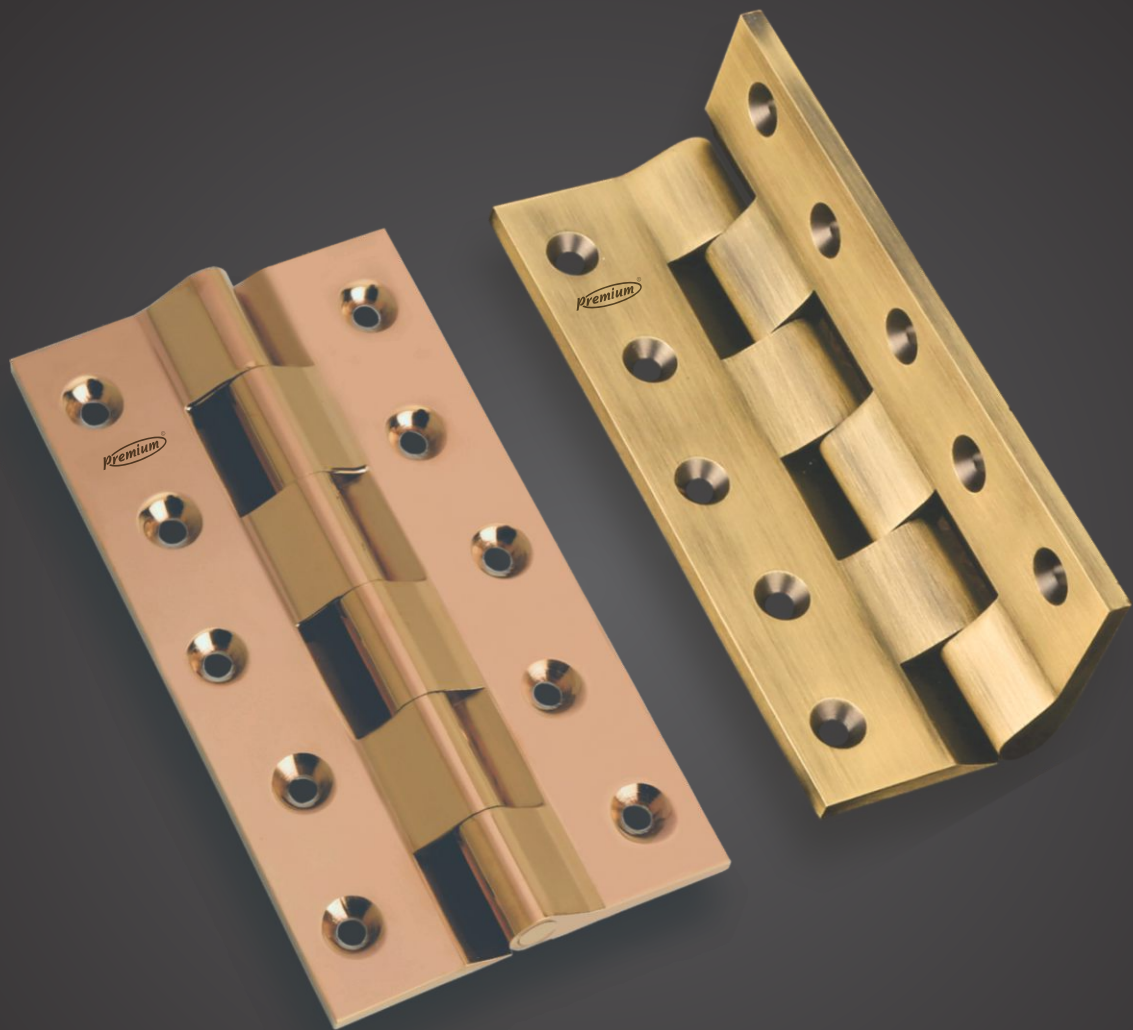
BRASS
CONCEAL HINGES

Brass Conceal Hinges

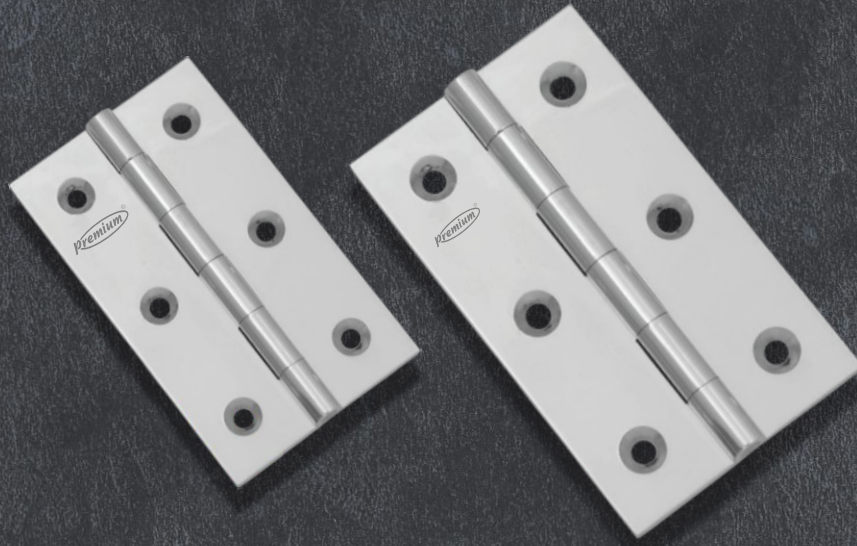
(Rate Per Pcs)

CODE	ITEM	SIZE	FINISH	
			MATT	PVD
P0001	Brass Conceal Hinges	Small	2470	3360
P0002	Brass Conceal Hinges	Medium	4688	5438
P0003	Brass Conceal Hinges	Heavy	10875	12940





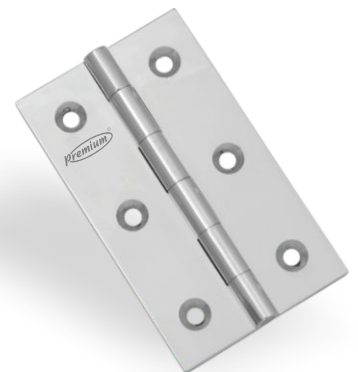
BRASS
HINGES



Brass Butt Hinges

(Rate Per Pcs)

CODE	SIZE		FINISH		
	INCH	MM	STANDARD	MATT	PVD
P0011	3 x 1/2 x 1/2 x 3/32	75 x 12 x 12 x 2	145	155	264
P0012	3 x 3/8 x 5/8 x 3/32	75 x 9 x 16 x 2	148	157	276
P0013	3 x 1/2 x 3/4 x 3/32	75 x 12 x 19 x 2	151	162	281
P0014	3 x 3/4 x 3/4 x 3/32	75 x 19 x 19 x 2	173	184	323
P0015	3 x 1 x 1/2 x 3/32	75 x 25 x 12 x 2	173	184	323
P0016	3 x 1 x 3/4 x 3/32	75 x 25 x 19 x 2	180	191	336
P0017	3 x 7/8 x 7/8 x 3/32	75 x 22 x 22 x 2	194	209	361
P0018	3 x 1 x 1 x 3/32	75 x 25 x 25 x 2	202	216	374
P0019	4 x 1/2 x 3/4 x 3/32	100 x 12 x 19 x 2	202	216	378
P0020	4 x 3/4 x 3/4 x 3/32	100 x 19 x 19 x 2	230	248	433
P0021	4 x 1 x 1/2 x 3/32	100 x 25 x 12 x 2	230	248	433
P0022	4 x 1 x 3/4 x 3/32	100 x 25 x 19 x 2	241	256	445
P0023	4 x 7/8 x 7/8 x 3/32	100 x 22 x 22 x 2	259	277	483
P0024	4 x 1 x 1 x 3/32	100 x 25 x 25 x 2	270	288	504



Brass Extra Heavy Butt Hinges / Locking Hinges

(Rate Per Pcs)

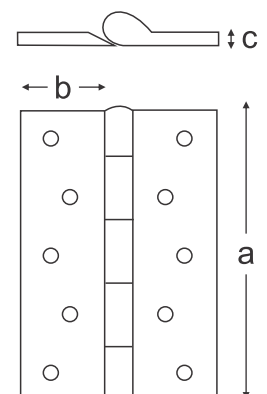
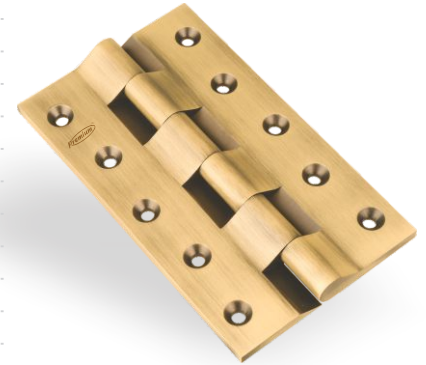
CODE	SIZE		STANDARD FINISH
	INCH	MM	
P0031	3 x 1/2 x 3/4 x 3/32	75 x 12 x 19 x 2	189
P0032	3 x 3/4 x 3/4 x 3/32	75 x 19 x 19 x 2	212
P0033	3 x 1 x 1/2 x 3/32	75 x 25 x 12 x 2	214
P0034	3 x 1 x 3/4 x 3/32	75 x 25 x 19 x 2	235
P0035	3 x 1 x 1 x 3/32	75 x 25 x 25 x 2	263
P0036	4 x 1/2 x 3/4 x 3/32	100 x 12 x 19 x 2	252
P0037	4 x 3/4 x 3/4 x 3/32	100 x 19 x 19 x 2	284
P0038	4 x 1 x 1/2 x 3/32	100 x 25 x 12 x 2	285
P0039	4 x 1 x 3/4 x 3/32	100 x 25 x 19 x 2	313
P0040	4 x 1 x 1 x 3/32	100 x 25 x 25 x 2	350



Brass Railway Hinges

(Rate Per Pcs)

CODE	SIZE		FINISH		
	INCH	MM	STANDARD	MATT	PVD
P0041	3 x 3/4 x 3/4 x 3/32	75 x 19 x 19 x 2	193	209	330
P0042	3 x 7/8 x 7/8 x 1/8	75 x 22 x 22 x 3	252	270	483
P0043	3x 1 x 1 x 1/8	75 x 25 x 25 x 3	338	360	643
P0044	4 x 7/8 x 7/8 x 1/8	100 x 22 x 22 x 3	335	360	643
P0045	4 x 1 x 1 x 1/8	100 x 25 x 25 x 3	380	412	785
P0046	4 x 1.1/8 x 1.1/8 x 1/8	100 x 28 x 28 x 3	462	498	904
P0047	4 x 1.1/8 x 1.1/8 x 5/32	100 x 28 x 28 x 4	553	596	1082
P0048	4 x 1.1/4 x 1.1/4 x 5/32	100 x 31 x 31 x 4	614	663	1205
P0049	4 x 1.1/4 x 1.1/4 x 3/16	100 x 31 x 31 x 4.5	803	864	1541
P0050	5 x 1 x 1 x 1/8	125 x 25 x 25 x 3	475	515	981
P0051	5 x 1.1/8 x 1.1/8 x 1/8	125 x 28 x 28 x 3	578	623	1130
P0052	5x 1.1/8 x 1.1/8 x 5/32	125 x 28 x 28 x 4	690	745	1353
P0053	5 x 1.1/4 x 1.1/4 x 5/32	125 x 31 x 31 x 4	768	829	1506
P0054	5 x 1.1/4 x 1.1/4 x 3/16	125 x 31 x 31 x 4.5	951	1027	1871
P0055	5 x 1.1/2 x 1.1/2 x 3/16	125 x 37 x 37 x 4.5	1285	1379	2465
P0056	5 x 2 x 2 x 3/16	125 x 50 x 50 x 4.5	1577	1688	3020
P0057	6 x 1.1/8 x 1.1/8 x 5/32	150 x 28 x 28 x 4	868	932	1663
P0058	6 x 1.1/4 x 1.1/4 x 5/32	150 x 31 x 31 x 4	965	1037	1848
P0059	6 x 1.1/4 x 1.1/4 x 3/16	150 x 31 x 31 x 4.5	1141	1232	2245
P0060	6 x 1.1/2 x 1.1/2 x 3/16	150 x 37 x 37 x 4.5	1541	1652	2957
P0061	6 x 2 x 2 x 3/16	150 x 50 x 50 x 4.5	1890	2027	3625
P0062	8 x 1.1/4 x 1.1/4 x 3/16	200 x 31 x 31 x 4.5	1753	1872	3217
P0063	8 x 1.1/2 x 1.1/2 x 3/16	200 x 37 x 37 x 4.5	2146	2290	3940
P0064	8 x 2 x 2 x 3/16	200 x 50 x 50 x 4.5	2628	2808	4830
P0065	10 x 1.1/4 x 1.1/4 x 3/16	250 x 31 x 31 x 4.5	2459	2610	4200
P0066	10 x 1.1/2 x 1.1/2 x 3/16	250 x 37 x 37 x 4.5	3010	3193	5141
P0067	10 x 2 x 2 x 3/16	250 x 50 x 50 x 4.5	3690	3917	6300
P0068	12 x 1.1/4 x 1.1/4 x 3/16	300 x 31 x 31 x 4.5 mm	2952	3132	5040
P0069	12 x 1.1/2 x 1.1/2 x 3/16	300 x 37 x 37 x 4.5 mm	3614	3834	6170
P0070	12 x 2 x 2 x 3/16	300 x 50 x 50 x 4.5 mm	4428	4698	7560
P0071	14 x 2 x 2 x 3/16	350 x 50 x 50 x 4.5 mm	15000	15370	22175
P0072	16 x 2 x 2 x 3/16	400 x 50 x 50 x 4.5 mm	18990	19480	27440
P0073	18 x 2 x 2 x 3/16	450 x 50 x 50 x 4.5 mm	22965	24640	34020
P0074	20 x 2 x 2 x 3/16	500 x 50 x 50 x 4.5 mm	29600	31610	42950
P0075	22 x 2 x 2 x 3/16	550 x 50 x 50 x 4.5 mm	37170	39480	52600
P0076	24 x 2 x 2 x 3/16	600 x 50 x 50 x 4.5 mm	46280	48950	64230
P0077	5 x 1.1/4 x 1/4	125 x 31 x 6 mm	1642	1757	3020
P0078	5 x 1.1/2 x 1/4	125 x 37 x 6 mm	1890	2020	3473
P0079	5 x 2 x 1/4	125 x 50 x 6 mm	2023	2164	3721
P0080	6 x 1.1/4 x 1/4	150 x 31 x 6 mm	1973	2106	3625
P0081	6 x 1.1/2 x 1/4	150 x 37 x 6 mm	2264	2419	4162
P0082	6 x 2 x 1/4	100 x 50 x 6 mm	2430	2599	4469
P0083	8 x 1.1/4 x 1/4	200 x 31 x 6 mm	2808	2988	5040
P0084	8 x 1.1/2 x 1/4	200 x 37 x 6 mm	3229	3438	5796
P0085	8 x 2 x 1/4	200 x 50 x 6 mm	3463	3686	6216
P0086	10 x 1.1/4 x 1/4	250 x 31 x 6 mm	4050	4277	7090
P0087	10 x 1.1/2 x 1/4	250 x 37 x 6 mm	4666	4925	8165
P0088	10 x 2 x 1/4	250 x 50 x 6 mm	4997	5274	8740
P0089	12 x 1.1/4 x 1/4	300 x 31 x 6 mm	4860	5130	8505
P0090	12 x 1.1/2 x 1/4	300 x 37 x 6 mm	5591	5900	9761
P0091	12 x 2 x 1/4	300 x 50 x 6 mm	5724	6041	10017



Brass Bearing Hinges

(Flat Tip / Fancy Tip)

(Rate Per Pcs)

CODE	SIZE		FINISH		
	INCH	MM	STANDARD	MATT	PVD
P0111	3 x 2 x 2.5 mm	75 x 50 x 2.5	372	402	623
P0112	3 x 2.1/2 x 3 mm	75 x 65 x 3	451	488	756
P0113	4 x 3 x 3 mm	100 x 75 x 3	723	782	1212
P0114	5 x 3 x 3 mm	125 x 75 x 3	873	944	1463
P0115	6 x 3 x 3 mm	150 x 75 x 3	1080	1168	1810
P0116	4 x 3 x 4 mm	100 x 75 x 4	847	916	1420
P0117	5 x 3 x 4 mm	125 x 75 x 4	1021	1104	1711
P0118	6 x 3 x 4 mm	150 x 75 x 4	1273	1376	2133
P0119	5 x 3 x 5 mm	125 x 75 x 5	1436	1552	2406
P0120	6 x 3 x 5 mm	150 x 75 x 5	1711	1850	2868
P0121	5 x 3.1/2 x 5 mm	125 x 89 x 5	1613	1744	2703
P0122	6 x 3.1/2 x 5 mm	150 x 89 x 5	1935	2092	3243
P0123	8 x 3.1/2 x 5 mm	200 x 89 x 5	3073	3322	5149
P0124	10 x 3.1/2 x 5 mm	250 x 89 x 5	4307	4656	7217
P0125	12 x 3.1/2 x 5 mm	300 x 89 x 5	5211	5634	8733
P0126	5 x 4 x 5 mm	125 x 100 x 5	2609	2820	4371
P0127	6 x 4 x 5 mm	150 x 100 x 5	3127	3380	5239
P0128	8 x 4 x 5 mm	200 x 100 x 5	4168	4506	6984
P0129	10 x 4 x 5 mm	250 x 100 x 5	5210	5632	8730
P0130	12 x 4 x 5 mm	300 x 100 x 5	6447	6970	10804
P0131	5 x 5 x 5 mm	125 x 125 x 5	2923	3160	4898
P0132	6 x 5 x 5 mm	150 x 125 x 5	3478	3760	5828
P0133	8 x 5 x 5 mm	200 x 125 x 5	4529	4896	7589
P0134	10 x 5 x 5 mm	250 x 125 x 5	6216	6720	10416
P0135	12 x 5 x 5 mm	300 x 125 x 5	7459	8064	12499
P0136	6 x 6 x 5 mm	150 x 150 x 5	3907	4224	6547
P0137	8 x 6 x 5 mm	200 x 150 x 5	5691	6152	9536
P0138	10 x 6 x 5 mm	250 x 150 x 5	7193	7776	12053
P0139	12 x 6 x 5 mm	300 x 150 x 5	9117	9856	15277



Flat Tip



Fancy Tip

Brass Door Closer Hinges

(Rate Per Pcs)

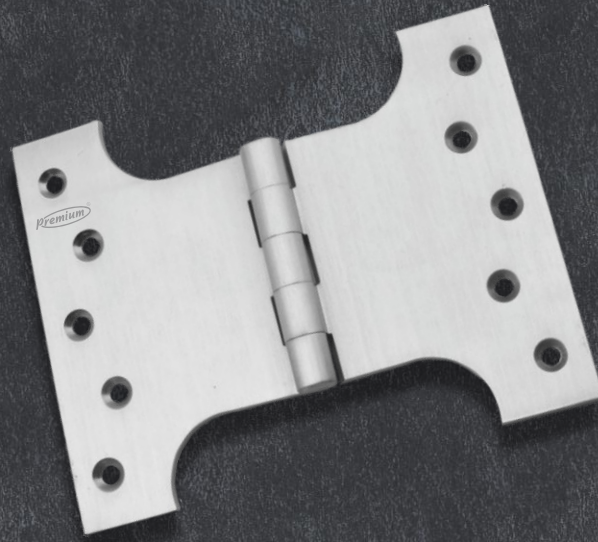
CODE	SIZE		FINISH		
	INCH	MM	STANDARD	MATT	PVD
P0141	4" SINGLE	100 SINGLE	940	983	1621
P0142	4" DOUBLE	100 DOUBLE	1548	1631	2726
P0143	5" SINGLE	125 SINGLE	1163	1228	2037
P0144	5" DOUBLE	125 DOUBLE	1987	2113	3511



Double



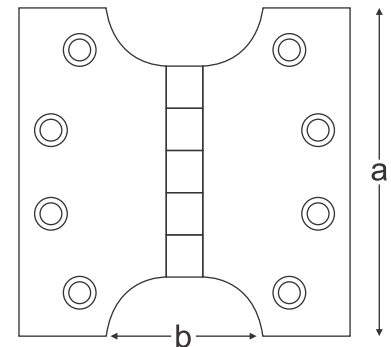
Single



Brass Parliament Hinges

(Rate Per Pcs)

CODE	SIZE		FINISH		
	INCH	MM	STANDARD	MATT	PVD
P0151	3 x 2	75 x 50	945	1030	1654
P0152	3 x 3	75 x 75	1091	1189	1909
P0153	4 x 2	100 x 50	1145	1248	2004
P0154	4 x 3	100 x 75	1361	1483	2382
P0155	4 x 4	100 x 100	1588	1731	2779
P0156	4 x 5	100 x 125	1750	1907	3062
P0157	4 x 6	100 x 150	1890	2060	3307
P0158	5 x 4	125 x 100	1912	2084	3346
P0159	5 x 5	125 x 125	2030	2213	3552
P0160	5 x 6	125 x 150	2182	2378	3818
P0161	6 x 6	150 x 150	2516	2742	4403
P0162	5 x 8	125 x 200	4093	4461	7162



Brass Table Hinges

(Rate Per Pcs)

CODE	SIZE		STANDARD FINISH
	INCH	MM	
P0171	1 x 1	25 x 25	90



Brass L Hinges

(Regular / Locking)

(Rate Per Pcs)

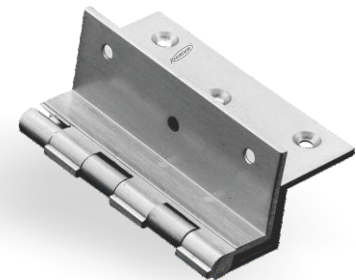
CODE	SIZE		PLYWOOD SIZE IN MM	STANDARD FINISH
	INCH	MM		
P0181	3 x 3/8 x 6	75 x 9 x 6	12	259
P0182	4 x 3/8 x 6	100 x 9 x 6	12	349
P0183	3 x 1/2 x 6	75 x 12 x 6	19	292
P0184	4 x 1/2 x 6	100 x 12 x 6	19	392
P0185	3 x 3/4 x 6	75 x 19 x 6	25	382
P0186	4 x 3/4 x 6	100 x 19 x 6	25	511
P0187	3 x 1 x 6	75 x 25 x 6	31	439
P0188	4 x 1 x 6	100 x 25 x 6	31	587
P0189	3 x W(2 x 1) x 1/2 x 6	75 x W(2 x 1) x 12 x 6	19	432
P0190	4 x W(2 x 1) x 1/2 x 6	100 x W(2 x 1) x 12 x 6	19	583
P0191	3 x W(2 x 1) x 3/4 x 6	75 x W(2 x 1) x 19 x 6	25	490
P0192	4 x W(2 x 1) x 3/4 x 6	100 x W(2 x 1) x 19 x 6	25	652
P0193	3 x 3/8 x 12	75 x 9 x 12	12	317
P0194	4 x 3/8 x 12	100 x 9 x 12	12	421
P0195	3 x 1/2 x 12	75 x 12 x 12	19	349
P0196	4 x 1/2 x 12	100 x 12 x 12	19	464
P0197	3 x 3/4 x 12	75 x 19 x 12	25	403
P0198	4 x 3/4 x 12	100 x 19 x 12	25	536
P0199	3 x 1 x 12	75 x 25 x 12	31	461
P0200	4 x 1 x 12	100 x 25 x 12	31	619
P0201	3 x W(2 x 1) x 1/2 x 12	75 x W(2 x 1) x 12 x 12	19	472
P0202	4 x W(2 x 1) x 1/2 x 12	100 x W(2 x 1) x 12 x 12	19	630
P0203	3 x W(2 x 1) x 3/4 x 12	75 x W(2 x 1) x 19 x 12	25	526
P0204	4 x W(2 x 1) x 3/4 x 12	100 x W(2 x 1) x 19 x 12	25	695
P0205	3 x 3/8 x 19	75 x 9 x 19	12	346
P0206	4 x 3/8 x 19	100 x 9 x 19	12	461
P0207	3 x 1/2 x 19	75 x 12 x 19	19	382
P0208	4 x 1/2 x 19	100 x 12 x 19	19	511
P0209	3 x 3/4 x 19	75 x 19 x 19	25	428
P0210	4 x 3/4 x 19	100 x 19 x 19	25	572
P0211	3 x 1 x 19	75 x 25 x 19	31	490
P0212	4 x 1 x 19	100 x 25 x 19	31	652
P0213	3 x W(2 x 1) x 1/2 x 19	75 x W(2 x 1) x 12 x 19	19	508
P0214	4 x W(2 x 1) x 1/2 x 19	100 x W(2 x 1) x 12 x 19	19	673
P0215	3 x W(2 x 1) x 3/4 x 19	75 x W(2 x 1) x 19 x 19	25	544
P0216	4 x W(2 x 1) x 3/4 x 19	100 x W(2 x 1) x 19 x 19	25	724
P0217	3 x 3/8 x 25	75 x 9 x 25	12	378
P0218	4 x 3/8 x 25	100 x 9 x 25	12	504
P0219	3 x 1/2 x 25	75 x 12 x 25	19	407
P0220	4 x 1/2 x 25	100 x 12 x 25	19	540
P0221	3 x 3/4 x 25	75 x 19 x 25	25	457
P0222	4 x 3/4 x 25	100 x 19 x 25	25	608
P0223	3 x 1 x 25	75 x 25 x 25	31	508
P0224	4 x 1 x 25	100 x 25 x 25	31	677
P0225	3 x W(2 x 1) x 1/2 x 25	75 x W(2 x 1) x 12 x 25	19	529
P0226	4 x W(2 x 1) x 1/2 x 25	100 x W(2 x 1) x 12 x 25	19	706
P0227	3 x W(2 x 1) x 3/4 x 25	75 x W(2 x 1) x 19 x 25	25	558
P0228	4 x W(2 x 1) x 3/4 x 25	100 x W(2 x 1) x 19 x 25	25	742



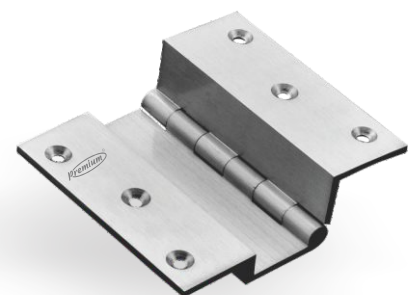
3 x W(2 x 1) x 1/2 x 6 mm Regular



3 x 1/2 x 12 mm Regular



3 x W(2 x 1) x 1/2 x 19 mm Locking



3 x W(2 x 1) x 3/4 x 12 mm Regular

Note : Regular & Locking L Hinges are the Same Price



75 / 100 mm

Brass W Hinges

(Rate Per Pcs)

CODE	SIZE		STANDARD FINISH
	INCH	MM	
P0241	2"	50	288
P0242	3"	75	454
P0243	4"	100	605

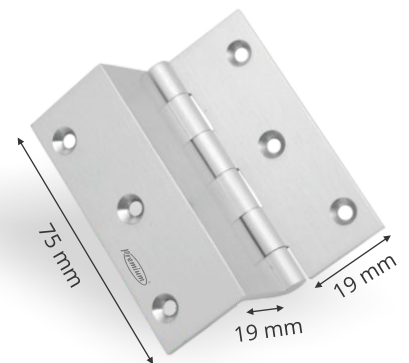


50 mm

Brass Z Hinges

(Rate Per Pcs)

CODE	SIZE		STANDARD FINISH
	INCH	MM	
P0251	3 x Z x 1/2	75 x 1/2 x Z	292
P0252	4 x Z x 1/2	100 x 1/2 x Z	392
P0253	3 x Z x 3/4	75 x 3/4 x Z	338
P0254	4 x Z x 3/4	100 x 3/4 x Z	450
P0255	3 x Z x 1	75 x Z x 25 mm	382
P0256	4 x Z x 1	100 x Z x 25 mm	508



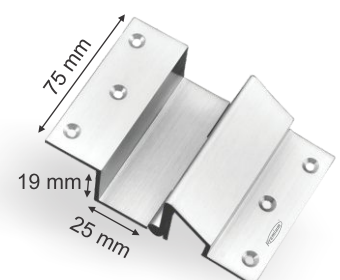
Brass Duck W Hinges

(Rate Per Pcs)

CODE	SIZE	DOOR	FRAME	STANDARD FINISH
	MM	MM	MM	
P0261	50 x 19 x 19 mm	19mm	19mm	342
P0262	75 x 19 x 19 mm	19mm	19mm	554
P0263	100 x 19 x 19 mm	19mm	19mm	738
P0264	75 x 19 x 25 mm	19mm	25mm	562
P0265	100 x 19 x 25 mm	19mm	25mm	767
P0266	75 x 25 x 25 mm	25mm	25mm	713
P0267	100 x 25 x 25 mm	25mm	25mm	958
P0268	75 x 25 x 19 mm	25mm	19mm	716
P0269	100 x 25 x 19 mm	25mm	19mm	972
P0270	75 x 35 x 19 mm (Full)	35mm	19mm	1638
P0271	100 x 35 x 19 mm (Full)	35mm	19mm	2182
P0272	75 x 35 x 25 mm	35mm	25mm	1674
P0273	100 x 35 x 25 mm	35mm	25mm	2232



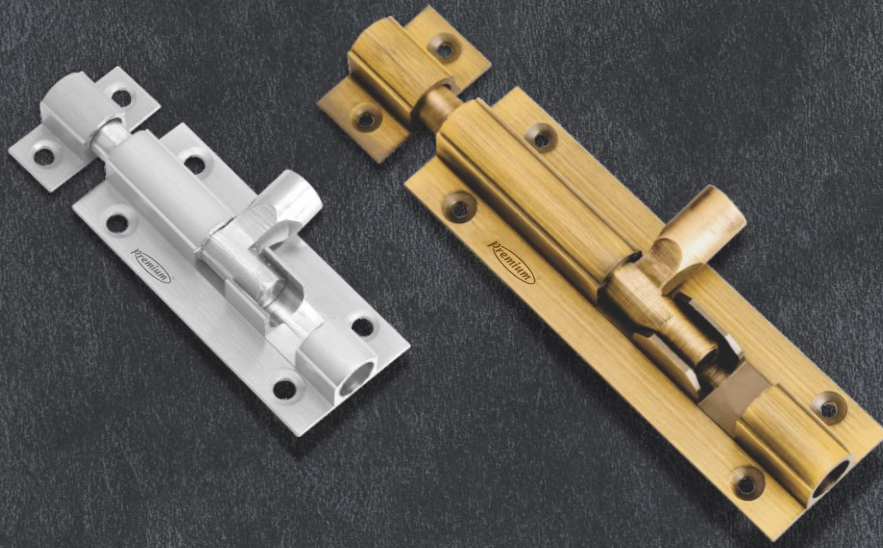
Full



Half



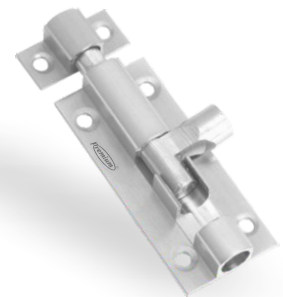
BRASS
TOWER BOLT



Brass Tower Bolt - 6 mm (1/4")

(Rate Per Pcs)

CODE	SIZE		STANDARD FINISH
	INCH	MM	
P0300	2"	50	130
P0301	2.1/2"	65	159
P0302	3"	75	191
P0303	4"	100	254



Brass Tower Bolt - 8 mm (5/16")

(Rate Per Pcs)

CODE	SIZE		STANDARD FINISH
	INCH	MM	
P0310	2.1/2"	65	198
P0311	3"	75	235
P0312	4"	100	315
P0313	6"	150	473

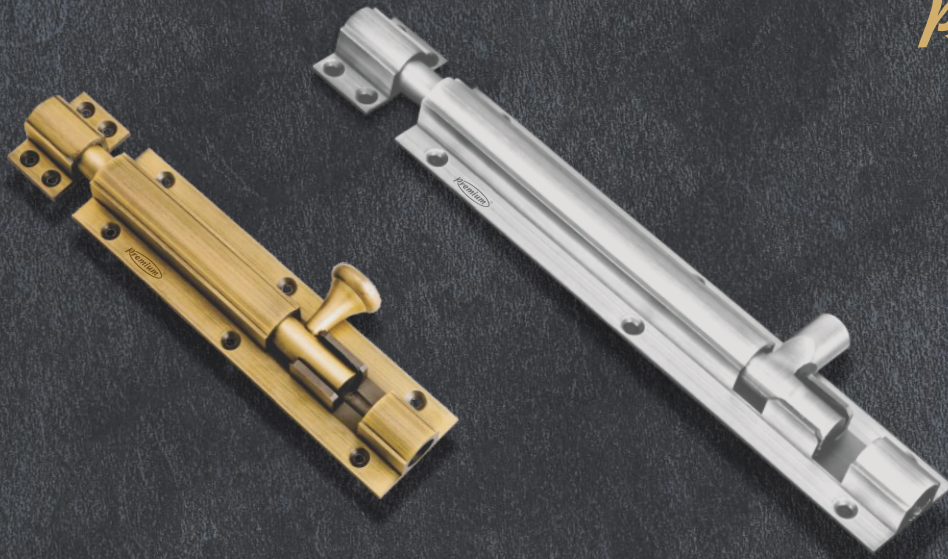


Brass Tower Bolt - 9 mm (3/8")

(Rate Per Pcs)

CODE	SIZE		FINISH	
	INCH	MM	STANDARD	MATT
P0321	3"	75	259	274
P0322	4"	100	346	366
P0323	6"	150	518	556
P0324	8"	200	691	732
P0325	10"	250	864	910
P0326	12"	300	1037	1098
P0327	15"	375	1296	1460
P0328	18"	450	1555	1682
P0329	24"	600	2074	2260
P0330	30"	750	2592	2890

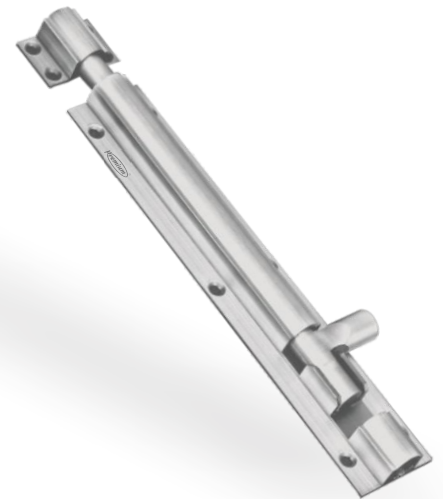




Brass Tower Bolt - (12 mm) (1/2") Regular

(Rate Per Pcs)

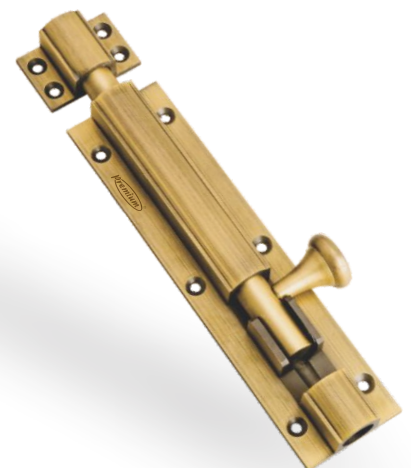
CODE	SIZE		STANDARD FINISH
	INCH	MM	
P0341	4"	100	601
P0342	6"	150	820
P0343	8"	200	1093
P0344	10"	250	1396
P0345	12"	300	1675
P0346	15"	375	2250
P0347	18"	450	2700
P0348	24"	600	3600
P0349	30"	750	4716
P0350	36"	900	5670
P0351	48"	1200	7560
P0352	60"	1500	9720
P0353	72"	1800	11880
P0354	84"	2100	14040



Brass Tower Bolt - (12 mm) (1/2") Heavy Plate

(Rate Per Pcs)

CODE	SIZE		FINISH		
	INCH	MM	STANDARD	MATT	PVD
P0361	4"	100	734	785	1428
P0362	6"	150	1102	1181	2142
P0363	8"	200	1469	1573	2856
P0364	10"	250	1836	1966	3570
P0365	12"	300	2203	2358	4284
P0366	15"	375	2754	2948	5355
P0367	18"	450	3305	3539	6426
P0368	24"	600	4406	4716	8568
P0369	30"	750	5688	6163	11340
P0370	36"	900	6880	7344	14112
P0371	48"	1200	9173	9792	-
P0372	60"	1500	12096	12870	-
P0373	72"	1800	14479	15588	-
P0374	84"	2100	16862	17838	-



Brass Tower Bolt - (16 mm) (5/8")

(Rate Per Pcs)

CODE	SIZE		FINISH		
	INCH	MM	STANDARD	MATT	PVD
P0391	6"	150	1890	2016	3528
P0392	8"	200	2520	2689	4704
P0393	10"	250	3150	3359	5880
P0394	12"	300	3780	4032	7056
P0395	15"	375	4727	5040	8820
P0396	18"	450	5670	6048	10584
P0397	24"	600	7560	8064	14112
P0398	30"	750	9720	10350	18480
P0399	36"	900	11700	12456	22428
P0400	48"	1200	15120	16668	-
P0401	60"	1500	19800	21240	-
P0402	72"	1800	23760	25632	-



Brass Tower Bolt - Crancked (9 mm)

(Rate Per Pcs)

CODE	SIZE		FINISH	
	INCH	MM	STANDARD	MATT
P0411	3"	75	245	263
P0412	4"	100	324	349
P0413	6"	150	486	522
P0414	8"	200	648	695
P0415	10"	250	810	871
P0416	12"	300	972	1044
P0417	15"	375	1217	1307
P0418	18"	450	1458	1566
P0419	24"	600	1944	2088
P0420	30"	750	2430	2718
P0421	36"	900	3276	3492



Brass Tower Bolt - Crancked (12 mm)

(Rate Per Pcs)

CODE	SIZE		FINISH	
	INCH	MM	STANDARD	MATT
P0431	4"	100	702	745
P0432	6"	150	1051	1116
P0433	8"	200	1400	1487
P0434	10"	250	1753	1861
P0435	12"	300	2102	2232
P0436	15"	375	2628	2790
P0437	18"	450	3154	3348
P0438	24"	600	4205	4464
P0439	30"	750	5436	5760
P0440	36"	900	6577	6966
P0441	48"	1200	8770	9288
P0442	60"	1500	11052	11700
P0443	72"	1800	13334	14112
P0444	84"	2100	16157	16848



Brass Tower Bolt - New Crancked

(Rate Per Pcs)

CODE	SIZE		FINISH		
	INCH	MM	STANDARD	MATT	PVD
P0451	3"	75	432	461	819
P0452	4"	100	576	616	1092
P0453	6"	150	864	922	1638
P0454	8"	200	1152	1228	2184
P0455	10"	250	1440	1537	2730
P0456	12"	300	1728	1843	3276
P0457	15"	375	2160	2304	4095
P0458	18"	450	2592	2765	4914
P0459	24"	600	3456	3686	6552
P0460	30"	750	4500	4824	8610
P0461	36"	900	5544	5890	10668
P0462	48"	1200	7632	8057	-
P0463	60"	1500	9540	10116	-
P0464	72"		11448	12139	-



Brass Tower Bolt - Zorik Crancked (Medium 8mm Rod)

(Rate Per Pcs)

CODE	SIZE		FINISH		
	INCH	MM	STANDARD	MATT	PVD
P0471	3"	75	324	346	613
P0472	4"	100	432	457	819
P0473	6"	150	648	688	1231
P0474	8"	200	864	918	1638
P0475	10"	250	1080	1145	2050
P0476	12"	300	1296	1375	2457
P0477	15"	375	1620	1721	3070
P0478	18"	450	1944	2070	3688



Brass Tower Bolt - Zorik Crancked (Heavy 9mm Rod)

(Rate Per Pcs)

CODE	SIZE		FINISH		
	INCH	MM	STANDARD	MATT	PVD
P0491	4"	100	648	688	1231
P0492	6"	150	972	1033	1844
P0493	8"	200	1296	1379	2457
P0494	10"	250	1620	1721	3074
P0495	12"	300	1944	2066	3688
P0496	15"	375	2430	2585	4612
P0497	18"	450	2916	3100	5531
P0498	24"	600	3888	4133	7375
P0499	30"	750	5040	5346	9429
P0500	36"	900	6102	6289	11378
P0501	48"	1200	8316	8806	-
P0502	60"	1500	10440	11052	-
P0503	72"	1800	12744	13478	-
P0504	84"	2100	15048	15905	-



Brass Tower Bolt - Audi - Zorik (Medium 8mm Rod)

(Rate Per Pcs)

CODE	SIZE		FINISH		
	INCH	MM	STANDARD	MATT	PVD
P0521	3"	75	320	342	626
P0522	4"	100	428	457	832
P0523	6"	150	641	684	1247
P0524	8"	200	853	911	1663
P0525	10"	250	1069	1141	2079
P0526	12"	300	1282	1368	2495
P0527	15"	375	1602	1710	3116
P0528	18"	450	1922	2052	3742
P0529	24"	600	2563	2736	4990
P0530	30"	750	3384	3420	6447
P0531	36"	900	4205	4464	7799

Brass Tower Bolt - Audi - Zorik (Heavy 9mm Rod)

(Rate Per Pcs)

CODE	SIZE		FINISH		
	INCH	MM	STANDARD	MATT	PVD
P0541	4"	100	644	688	1252
P0542	6"	150	965	1030	1877
P0543	8"	200	1285	1372	2503
P0544	10"	250	1609	1717	3129
P0545	12"	300	1930	2059	3755
P0546	15"	375	2412	2574	4691
P0547	18"	450	2894	3089	5632
P0548	24"	600	3859	4118	7510
P0549	30"	750	5004	5328	9597
P0550	36"	900	6059	6448	11579
P0551	48"	1200	8258	8777	-
P0552	60"	1500	10368	11016	-
P0553	72"	1800	12658	13435	-
P0554	84"	2100	14947	15854	-



Audi
(Both Side Molded)

Brass Tower Bolt - Audi - Zorik (Extra Heavy 12mm Rod)

(Rate Per Pcs)

CODE	SIZE		FINISH		
	INCH	MM	STANDARD	MATT	PVD
P0571	6"	150	1757	1872	3415
P0572	8"	200	2340	2495	4549
P0573	10"	250	2927	3121	5687
P0574	12"	300	3510	3744	6825
P0575	15"	375	4388	4680	8530
P0576	18"	450	5263	5616	10240
P0577	24"	600	7020	7488	13650
P0578	30"	750	8957	9540	17270
P0579	36"	900	10800	11502	20790
P0580	48"	1200	14580	15516	-
P0581	60"	1500	18270	19440	-
P0582	72"	1800	22140	23544	-

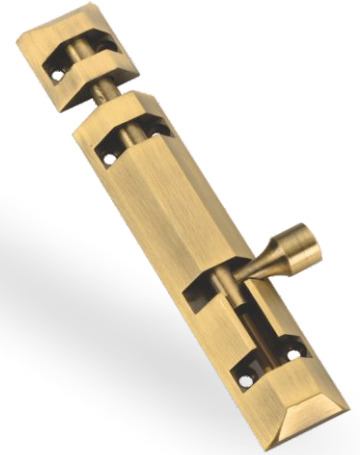


Zorik
(Both Side Open)

Brass Tower Bolt - (8 mm) Diamond / Diamond Audi

(Rate Per Pcs)

CODE	SIZE		FINISH		
	INCH	MM	STANDARD	MATT	PVD
P0591	4"	100	515	584	809
P0592	6"	150	772	876	1213
P0593	8"	200	1029	1167	1617
P0594	10"	250	1287	1459	2021
P0595	12"	300	1544	1751	2426
P0596	15"	375	1930	2189	3032
P0597	18"	450	2316	2626	3639
P0598	24"	600	3088	3502	4852
P0599	30"	750	3860	4378	6065
P0600	36"	900	4632	5253	7278
P0601	48"	1200	6176	7004	-
P0602	60"	1500	7720	8755	-



Diamond Audi

Brass Tower Bolt - (10 mm) Diamond / Diamond Audi

(Rate Per Pcs)

CODE	SIZE		FINISH		
	INCH	MM	STANDARD	MATT	PVD
P0611	4"	100	643	675	1007
P0612	6"	150	965	1013	1511
P0613	8"	200	1286	1335	2015
P0614	10"	250	1608	1685	2518
P0615	12"	300	1930	1995	2022
P0616	15"	375	2415	2520	3825
P0617	18"	450	2995	3120	4685
P0618	24"	600	3980	4150	6260
P0619	30"	750	4975	5150	7725
P0620	36"	900	5990	6200	9325
P0621	48"	1200	-	-	-
P0622	60"	1500	-	-	-



Diamond

Brass Tower Bolt - (12 mm) Diamond / Diamond Audi

(Rate Per Pcs)

CODE	SIZE		FINISH		
	INCH	MM	STANDARD	MATT	PVD
P0631	6"	150	2058	2096	3601
P0632	8"	200	2744	2810	4802
P0633	10"	250	3360	3430	5880
P0634	12"	300	4116	4220	6203
P0635	15"	375	5670	5790	9922
P0636	18"	450	6804	6958	11907
P0637	24"	600	9997	11120	17495
P0638	30"	750	12266	12470	21465
P0639	36"	900	15876	16060	27783
P0640	48"	1200	20535	20720	-
P0641	60"	1500	26600	26840	-

Brass Tower Bolt - (16 mm) Diamond / Diamond Audi

(Rate Per Pcs)

CODE	SIZE		FINISH		
	INCH	MM	STANDARD	MATT	PVD
P0651	6"	150	3386	3490	5925
P0652	8"	200	4515	4638	7901
P0653	10"	250	5644	5795	9877
P0654	12"	300	6773	6961	11853
P0655	15"	375	9365	9578	16389
P0656	18"	450	11239	11429	19668
P0657	24"	600	14985	15260	26224
P0658	30"	750	18731	19005	32779
P0659	36"	900	23085	23395	40399



Diamond Audi

Diamond

Brass Nano Tower Bolt (9 mm)

(Rate Per Inch)

CODE	SIZE	FINISH		
		STANDARD	MATT	PVD
P0671	4" TO 48" (100 mm TO 1200 mm)	117	125	196



Nano Tower Bolt

Brass Tower Bolt - Capsule

(Rate Per Inch)

CODE	SIZE	STANDARD FINISH
P0691	3" TO 18" (MEDIUM)	103
P0692	4" TO 24" (HEAVY)	159

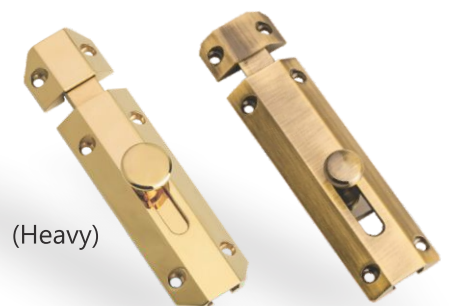


Capsule Tower Bolt

Brass Baby Latch - Zen

(Rate Per Pcs)

CODE	SIZE		FINISH		
	INCH	MM	STANDARD	MATT	PVD
P0701	3"	75	302	323	555
P0702	4"	100	401	430	740
P0703	4" (Heavy)	100 (Heavy)	800	889	1220



(Heavy)

Brass Tower Bolt - Patti

(Rate Per Pcs)

CODE	SIZE		FINISH		
	INCH	MM	STANDARD	MATT	PVD
P0711	5/16"	8	25	27	42
P0712	3/8"	9	25	27	42
P0713	1/2"	12	25	27	42



Brass Kent Tower Bolt

(Rate Per Set)

CODE	SIZE	STANDARD FINISH
P0721	-	919

Brass Tower Bolt - Parliament

(Rate Per Inch)

CODE	SIZE	FINISH	
		STANDARD	MATT
P0731	100 mm TO 900 mm	158	188

Brass Conceal Tower Bolt 19 mm

(Rate Per Pcs)

CODE	SIZE		19MM	
	INCH	MM	STANDARD	MATT
P0741	4"	100	275	300
P0742	6"	150	394	429
P0743	8"	200	525	572
P0744	10"	250	656	715
P0745	12"	300	788	859
P0746	15"	375	975	1063
P0747	18"	450	1162	1267
P0748	24"	600	1552	1692
P0749	30"	750	2025	2207
P0750	36"	900	2535	2763
P0751	48"	1200	-	-

Brass Conceal Tower Bolt 25 mm

(Rate Per Pcs)

CODE	SIZE		25MM	
	INCH	MM	STANDARD	MATT
P0761	4"	100	-	-
P0762	6"	150	506	552
P0763	8"	200	656	715
P0764	10"	250	825	899
P0765	12"	300	975	1063
P0766	15"	375	1238	1349
P0767	18"	450	1462	1594
P0768	24"	600	1950	2125
P0769	30"	750	2625	2861
P0770	36"	900	3150	3433
P0771	48"	1200	4162	4537

Brass Round Conceal Tower Bolt

(Rate Per Pcs)

CODE	SIZE		STANDARD FINISH
	INCH	MM	
P0781	2"	50	161
P0782	2.1/2"	65	173
P0783	3"	75	218
P0784	4"	100	260
P0785	6"	150	390
P0786	8"	200	488





BRASS
FITTINGS

Brass Gate Hook

(Rate Per Pcs)

CODE	SIZE		FINISH		
	INCH	MM	STANDARD	MATT	PVD
P0800	2"	50	173	188	297
P0801	2.1/2"	65	177	192	303
P0802	3"	75	182	198	312
P0803	4"	100	189	205	324
P0804	5"	125	196	213	336
P0805	6"	150	200	217	342
P0806	8"	200	233	253	399



Brass Gate Hook-Extra Heavy

(Rate Per Pcs)

CODE	SIZE		FINISH		
	INCH	MM	STANDARD	MATT	PVD
P0811	3"	75	368	399	630
P0812	4"	100	376	409	645
P0813	5"	125	385	418	660
P0814	6"	150	392	426	672



Brass Window Stay

(Rate Per Pcs)

CODE	SIZE		FINISH		
	INCH	MM	STANDARD	MATT	PVD
P0821	8"	200	315	342	540
P0822	10"	250	382	414	654



Brass Window Stay - Deluxe

(Rate Per Pcs)

CODE	SIZE		FINISH		
	INCH	MM	STANDARD	MATT	PVD
P0831	6"	150	348	378	597



Brass Window Stay - Solid

(Rate Per Pcs)

CODE	SIZE		FINISH		
	INCH	MM	STANDARD	MATT	PVD
P0841	6"	150	548	595	939



Brass Window Stay - Sliding

(Rate Per Pcs)

CODE	SIZE		FINISH		
	INCH	MM	STANDARD	MATT	PVD
P0851	6"	150	882	958	1512



Brass Concealed Flat Latch

(Rate Per Pcs)

CODE	SIZE	STANDARD FINISH
P0861	-	890



Brass Door Chain

(Rate Per Pcs)

CODE	TYPE	FINISH	
		STANDARD	MATT
P0871	SQUARE	1010	1096



Brass Panel Lock

(Rate Per Pcs)

CODE	SIZE	WITH KEY	WITHOUT KEY
P0881	31 mm	333	263



Key

Panel Lock

Brass Kitchen Brackets

(Rate Per Pcs)

CODE	TYPE	STANDARD FINISH
P0891	Side / Centre	459



Brass Push Magnet

(Rate Per Pcs)

CODE	TYPE	STANDARD FINISH
P0901	Plain	245



Brass Ball Bearing Pivot (Side/Centre)

(Rate Per Pcs)

CODE	SIZE		STANDARD FINISH
	INCH	MM	
P0911	2.1/2 x 5/8	65 x 16	166
P0912	3 x 3/4	75 x 19	245
P0913	4 x 1	100 x 25	361
P0914	5 x 1	125 x 25	635
P0915	6 x 1	150 x 25	763



Brass Real Bearing Pivot (Side/Centre)

(Rate Per Pcs)

CODE	SIZE		STANDARD FINISH
	INCH	MM	
P0921	3 x 3/4	75 x 19	578
P0922	4 x 1	100 x 25	1006
P0923	4 x 1.1/4	100 x 31	1057
P0924	4 x 1.1/2	100 x 37	1309
P0925	5 x 1.1/4	125 x 31	1811
P0926	6 x 1.1/4	150 x 31	1911
P0927	8 x 2	200 x 50	7109
P0928	8 x 2.1/2	200 x 65	9083



Brass Mala Tadi

(Rate Per Pcs)

CODE	SIZE		FINISH		
	INCH	MM	STANDARD	MATT	PVD
P0931	8"	200	938	1018	1608
P0932	10"	250	1096	1189	1878



Brass Rod Latch

(Rate Per Pcs)

CODE	SIZE		STANDARD FINISH
	INCH	MM	
P0941	6"	150	510
P0942	8"	200	562
P0943	10"	250	619
P0944	12"	300	675





Crown

Ovel

Fancy

Brass Door Stopper

(Rate Per Pcs)

CODE	TYPE	FINISH		
		STANDARD	MATT	PVD
P0951	ROYAL	709	770	1215
P0952	PRINCE	858	931	1470
P0953	CROWN	788	855	1350
P0954	OVEL	788	855	1350
P0955	FANCY	800	865	1450



Royal

Prince

Brass Door Magnet

(Rate Per Pcs)

CODE	SIZE	FINISH	
		MATT	PVD
P0961	25 mm (ROD)	1612	2044



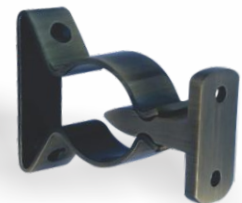
Round

Hex

Brass Door Holder

(Rate Per Pcs)

CODE	SIZE	STANDARD FINISH
P0971	-	368



Brass Floor Mount Door Stopper

(Rate Per Pcs)

CODE	SIZE	FINISH	
		MATT	PVD
P0981	-	360	425

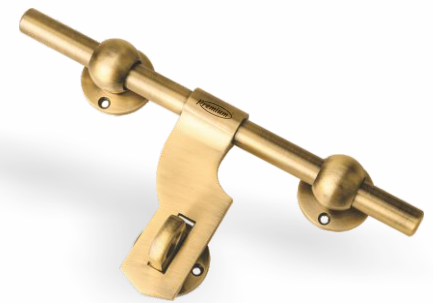




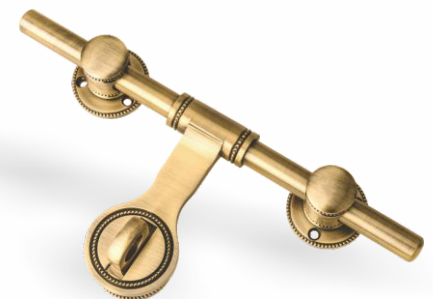
Brass Aldrops (Plain / Fancy)

(Rate Per Pcs)

CODE	SIZE		FINISH		
	INCH	MM	STANDARD	MATT	PVD
P0991	8 x 5/8	(2+1) 200 x 16	2800	3000	4200
P0992	10 x 5/8	(2+1) 250 x 16	3040	3250	4400
P0993	12 x 5/8	(3+1) 300 x 16	3680	3920	5060
P0994	14 x 5/8	(3+1) 350 x 16	3920	4180	5390
P0995	16 x 5/8	(4+1) 400 x 16	4660	4950	6460
P0996	18 x 5/8	(4+1) 450 x 16	4880	5210	6760
P0997	16 mm Extra Clip		480	510	660
P0998	16 mm Extra Lock		480	510	660
P0999	10 x 3/4	(3+1) 250 x 19	5840	6200	8030
P1000	12 x 3/4	(3+1) 300 x 19	6240	6630	8580
P1001	14 x 3/4	(3+1) 350 x 19	6640	7080	9150
P1002	16 x 3/4	(4+1) 400 x 19	7840	8300	10780
P1003	18 x 3/4	(4+1) 450 x 19	8240	8730	11330
P1004	20 x 3/4	(4+1) 500 x 19	8640	9150	11880
P1005	22 x 3/4	(4+1) 550 x 19	9040	9590	12450
P1006	24 x 3/4	(4+1) 600 x 19	9440	10000	12980
P1007	19 mm Extra Clip		800	820	1100
P1008	19 mm Extra Lock		660	680	920
P1009	16 x 1	(4+1) 400 x 25	24300	25500	31580
P1010	18 x 1	(4+1) 450 x 25	25200	26450	32750
P1011	20 x 1	(4+1) 500 x 25	26100	27400	34000
P1012	22 x 1	(4+1) 550 x 25	27000	28300	35100
P1013	24 x 1	(4+1) 600 x 25	27900	29300	36300
P1014	26 x 1	(4+1) 650 x 25	28800	30300	37500
P1015	28 x 1	(4+1) 700 x 25	29700	31200	38600
P1016	30 x 1	(4+1) 750 x 25	30600	32100	39800
P1017	32 x 1	(4+1) 800 x 25	31500	33040	41000
P1018	34 x 1	(4+1) 850 x 25	32400	34000	42200
P1019	36 x 1	(4+1) 900 x 25	33300	34930	43300
P1020	25 mm Extra Clip		2700	2800	3500
P1021	25 mm Extra Lock		2700	2800	3500



Plain



Fancy



Brass Window Handle

(Rate Per Pcs)

CODE	SIZE		FINISH	
	INCH	MM	MATT	PVD
P1030	3"	75	360	560
P1031	4"	100	400	600
P1032	6"	150	600	900
P1033	8"	200	800	1200



Brass Window Handle

(Rate Per Pcs)

CODE	SIZE		FINISH	
	INCH	MM	MATT	PVD
P1040	3"	75	460	600
P1041	4"	100	500	640
P1042	6"	150	650	810
P1043	8"	200	740	1080



Brass Window Handle

(Rate Per Pcs)

CODE	SIZE		FINISH	
	INCH	MM	MATT	PVD
P1050	3"	75	360	460
P1051	4"	100	400	500
P1052	6"	150	600	750
P1053	8"	200	800	1000



Brass Window Handle

(Rate Per Pcs)

CODE	SIZE		FINISH	
	INCH	MM	MATT	PVD
P1060	3"	75	360	490
P1061	4"	100	400	530
P1062	6"	150	550	750
P1063	8"	200	740	1000





P1072



P1074



P1071

Brass Hooks

(Rate Per Pcs)

CODE	CODE	CODE	CODE	CODE	TYPE	FINISH	
						STANDARD	PVD
P1071	P1072	P1073	P1074	P1075	1 Hook	190	255
"	"	"	"	"	2 Hook	380	510
"	"	"	"	"	3 Hook	570	765
"	"	"	"	"	4 Hook	760	1020
"	"	"	"	"	5 Hook	950	1275
"	"	"	"	"	6 Hook	1140	1530
"	"	"	"	"	8 Hook	1520	2040
"	"	"	"	"	10 Hook	1900	2550



P1073



P1075

Brass Hooks Square

(Rate Per Pcs)

CODE	TYPE	FINISH	
		STANDARD	PVD
P1081	1 Hook	206	274
"	2 Hook	412	548
"	3 Hook	618	822
"	4 Hook	824	1096
"	5 Hook	1030	1370
"	6 Hook	1236	1644
"	8 Hook	1648	2192
"	10 Hook	2060	2740



P1081



BRASS
ZULLA ACCESSORIES



Fancy Peacock (Single)

Fancy Peacock (Double)

Brass Zulla Set - Small Kadi

1 Set = 84 Pcs + 8 S.Hook

(Rate Per Set)

CODE	TYPE	FINISH		
		STANDARD	MATT	PVD
P1101	PLAIN	37100	40280	63600
P1102	GEORGIAN	37100	40280	63600
P1103	RING	37100	40280	63600
P1104	Extra Pcs	446	485	765



Plain

Georgian

Ring



Bell

Statue

Horse

Lion

Elephant

Peacock

Parrot

Brass Zulla - Animal Kadi

(Rate Per Pcs)

CODE	TYPE	FINISH		
		STANDARD	MATT	PVD
P1111	Bell	674	732	1155
P1112	Statue with Kadi Fitting	2912	3162	4992
P1113	Horse with Kadi Fitting	3024	3283	5184
P1114	Lion with Kadi Fitting	3024	3283	5184
P1115	Elephant with Kadi Fitting	3024	3283	5184
P1116	Peacock with Kadi Fitting	2779	3017	4764
P1117	Parrot with Kadi Fitting	2847	3091	4881
P1118	Fancy Peacock (Single)	758	788	-
P1119	Fancy Peacock (Double)	844	881	-



Fancy Peacock (Single)

Fancy Peacock (Double)

Brass Zulla Set - 12" (300 mm) (Rate Per Set)

CODE	SIZE	FINISH		
		STANDARD	MATT	PVD
P1131	1 Set = 28 Pcs + 8 S.Hook	31771	34495	54465
P1132	Extra Pcs	1216	1321	2085



Brass Zulla Set - 12" (300 mm) (Rate Per Set)

CODE	SIZE	FINISH		
		STANDARD	MATT	PVD
P1133	1 Set = 28 Pcs + 8 S.Hook	31771	34495	54465
P1134	Extra Pcs	1216	1321	2085



Brass Zulla Set - 12" (300 mm) (Rate Per Set)

CODE	SIZE	FINISH		
		STANDARD	MATT	PVD
P1135	1 Set = 28 Pcs + 8 S.Hook	31771	34495	54465
P1136	Extra Pcs	1216	1321	2085



Brass Zulla Set - 12" (300 mm) (Rate Per Set)

CODE	SIZE	FINISH		
		STANDARD	MATT	PVD
P1137	1 Set = 28 Pcs + 8 S.Hook	31771	34495	54465
P1138	Extra Pcs	1216	1321	2085



Brass Zulla Set - 12" (300 mm) (Rate Per Set)

CODE	SIZE	FINISH		
		STANDARD	MATT	PVD
P1139	1 Set = 28 Pcs + 8 S.Hook	31771	34495	54465
P1140	Extra Pcs	1216	1321	2085



Brass Zulla Set

(Rate Per Set)

CODE	SIZE		FINISH		
			STANDARD	MATT	PVD
P1141	6"(150mm)	1 Set = 56 Pcs + 8 S.Hook	40768	43720	75288
P1142		Extra Pcs	672	680	1248
P1143	12" (300mm)	1 Set = 28 Pcs + 8 S.Hook	46640	49800	76000
P1144		Extra Pcs	1666	1779	2714



Brass Zulla Set

(Rate Per Set)

CODE	SIZE		FINISH		
			STANDARD	MATT	PVD
P1151	8"(200mm)	1 Set = 44 Pcs + 8 S.Hook	50200	53500	77500
P1152		Extra Pcs	1141	1216	1761
P1153	12"(300mm)	1 Set = 28 Pcs + 8 S.Hook	47396	51400	78200
P1154		Extra Pcs	1600	1700	2600



Brass Zulla Set - 8" (200 mm)

(Rate Per Set)

CODE	SIZE		FINISH		
			STANDARD	MATT	PVD
P1161		1 Set = 44 Pcs + 8 S.Hook	43600	46500	69500
P1162		Extra Pcs	991	1057	1580



Brass Zulla Set - 8" (200 mm)

(Rate Per Set)

CODE	SIZE		FINISH		
			STANDARD	MATT	PVD
P1163		1 Set = 44 Pcs + 8 S.Hook	41800	44500	68000
P1164		Extra Pcs	950	1011	1545



Brass Zulla Set Patti - 6" (150 mm)

(Rate Per Set)

CODE	SIZE		FINISH		
			STANDARD	MATT	PVD
P1171		1 Set = 56 Pcs + 8 S.Hook	38220	46284	70690
P1172		Extra Pcs	630	774	1170





Satin Laquer

Black

Antique

Brass Zulla (19 mm Pipe)

(Rate Per Set)

CODE	TYPE	RATE
P1181	CNC CUT (28 Pcs + 8 S.Hook)	54375
P1182	Extra Pcs	1942



S.S.

Brass Zulla Hinges

(Rate Per Set)

CODE	SIZE		FINISH		
	INCH	MM	STANDARD	MATT	PVD
P1191	10"	250	4050	4305	6880
P1192	12"	300	4650	4942	7956



Brass S Hook

(Rate Per Pcs)

CODE	SIZE	FINISH		
		STANDARD	MATT	PVD
P1201	-	368	399	630



Brass W Hook

(Rate Per Pcs)

CODE	SIZE	FINISH		
		STANDARD	MATT	PVD
P1211	-	634	712	1050





Rajwadi Hook



L Corner

Brass D Hook

(Rate Per Set)

CODE	SIZE	FINISH		
		STANDARD	MATT	PVD
P1221	4 Pcs Set	2325	2426	3338



Brass Rajwadi Hook

(Rate Per Pcs)

CODE	SIZE	FINISH		
		STANDARD	MATT	PVD
P1231	-	686	731	-



Brass Anchor Hook

(Rate Per Set)

CODE	SIZE	FINISH		
		STANDARD	MATT	PVD
P1241	2 Pcs Set	2520	2700	4620



Brass L Corner

(Rate Per Set)

CODE	SIZE	FINISH		
		STANDARD	MATT	PVD
P1251	4 Pcs Set	3300	3506	5363





Single Ball Bearing



Double Ball Bearing

Brass Bearing Kada

(Rate Per Set)

CODE	TYPE	FINISH		
		STANDARD	MATT	PVD
P1261	Single Ball Bearing (1 Set = 2 Pcs)	5120	5400	8580
P1262	Double Ball Bearing (1 Set = 2 Pcs)	6120	6450	8900
P1263	Ceiling Kada with Plate (1 Set = 2 Pcs) (Including American Nuts & Bolts 12 mm 6 Pcs)	11200	11800	16800



Ceiling Kada With Plate

Brass Bottom Kada

(Rate Per Set)

CODE	TYPE	FINISH		
		STANDARD	MATT	PVD
P1271	1 Set = 4 Pcs	4500	4800	7800





BRASS

GLASS FITTINGS

Brass D Brackets

(Rate Per Pcs)

CODE	SIZE		STANDARD FINISH	PVD
	INCH	MM		
P1301	1.1/2 x 6 mm	37 x 6	82	131
P1302	1.1/2 x 8 mm	37 x 8	86	138
P1303	1.1/2 x 10 mm	37 x 10	91	146
P1304	1.1/2 x 12 mm	37 x 12	102	163
P1305	2 x 6 mm	50 x 6	116	186
P1306	2 x 8 mm	50 x 8	130	208
P1307	2 x 10 mm	50 x 10	140	224
P1308	2 x 12 mm	50 x 12	145	232
P1309	2 x 19 mm	50 x 19	245	392
P1310	2.1/2 x 19 mm	65 x 19	368	589



Brass Corner Brackets

(Rate Per Pcs)

CODE	SIZE	STANDARD FINISH
P1311	12 mm	300



Brass Folding Brackets

(Rate Per Pcs)

CODE	SIZE		STANDARD FINISH
	INCH	MM	
P1321	2 x 1 x 8 mm	50 x 25 x 8	249
P1322	2 x 1 x 12 mm	50 x 25 x 12	292
P1323	1.1/2 x 1.1/2 x 8 mm	37 x 37 x 8	309
P1324	1.1/2 x 1.1/2 x 12 mm	37 x 37 x 12	322
P1325	2 x 1.1/2 x 12 mm	50 x 37 x 12	420
P1326	3 x 1.1/2 x 8 mm	75 x 37 x 8	594
P1327	3 x 1.1/2 x 12 mm	75 x 37 x 12	634
P1328	2 x 2 x 12 mm	50 x 50 x 12	532
P1329	3 x 2 x 12 mm	75 x 50 x 12	820
P1330	4 x 2 x 12 mm	100 x 50 x 12	1090



Brass Folding Brackets (Corner)

(Rate Per Pair)

CODE	SIZE		STANDARD FINISH
	INCH	MM	
P1341	2 x 1 x 8 mm	50 x 25 x 8	558
P1342	2 x 1 x 12 mm	50 x 25 x 12	648



Brass Mirror Brackets Fancy

(Rate Per Pcs)

CODE	SIZE	STANDARD FINISH
P1351	6 mm	123
P1352	8 mm	138



Brass Patti Pivot

(Rate Per Pair)

CODE	SIZE	STANDARD FINISH
P1361	50 x 37 x 8	742
P1362	50 x 37 x 12	918
P1363	65 x 37 x 8	918
P1364	65 x 37 x 12	1108
P1365	75 x 37 x 8	1138
P1366	75 x 37 x 12	1296
P1367	100 x 37 x 12	1778



Brass Glass Pivot

(Rate Per Pair)

CODE	SIZE	STANDARD FINISH
P1371	37 x 6	245
P1372	37 x 8	248
P1373	50 x 6	325
P1374	50 x 8	340



Brass Bat

(Rate Per Gross)

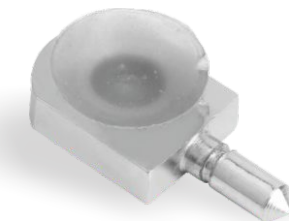
CODE	SIZE	STANDARD FINISH	
		PLAIN	VACUUM
P1381	Small	2772	-
P1382	Medium	4284	4536
P1383	Heavy	7056	7560



Brass Bat Deluxe

(Rate Per Pcs)

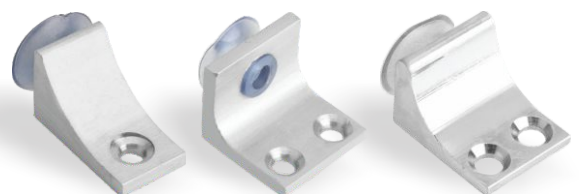
CODE	SIZE	STANDARD FINISH	
		PLAIN	VACUUM
P1391	Medium	40	42
P1392	Heavy	54	56



Brass L Bat

(Rate Per Pcs)

CODE	SIZE	FINISH		
		STANDARD	MATT	PVD
P1401	Small	39	43	70
P1402	Medium	48	52	85
P1403	Heavy	57	61	100



Medium

Heavy

Solid

Brass Crystal Mirror Cap (Rate Per Pcs)

CODE	SIZE	STANDARD FINISH
P1411	12 mm	41
P1412	19 mm	60
P1413	25 mm	90
P1414	31 mm	157
P1415	37 mm	202



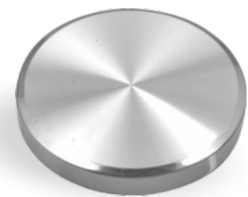
Brass Crystal Mirror Stand (Rate Per Pcs)

CODE	SIZE	STANDARD FINISH	
		HALF	FULL
P1421	6 mm	128	161
P1422	8 mm	143	176
P1423	12 mm	173	214



Brass Round Flat Mirror Cap (Rate Per Pcs)

CODE	SIZE	STANDARD FINISH
P1431	12 mm	26
P1432	16 mm	32
P1433	19 mm	35
P1434	25 mm	48
P1435	31 mm	72
P1436	37 mm	92
P1437	50 mm	166
P1438	65 mm	328
P1439	75 mm	490



Brass Swastik Mirror Cap (Rate Per Pcs)

CODE	SIZE	STANDARD FINISH
P1441	50 mm	300



Brass Square Flat Mirror Cap (Rate Per Pcs)

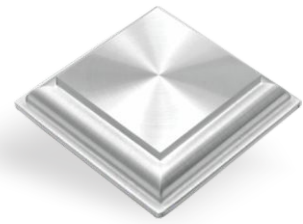
CODE	SIZE	STANDARD FINISH
P1451	12 mm	38
P1452	19 mm	49
P1453	25 mm	71
P1454	31 mm	112
P1455	37 mm	142
P1456	50 mm	289



Brass Square Royal Mirror Cap

(Rate Per Pcs)

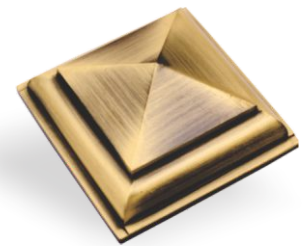
CODE	SIZE	STANDARD FINISH
P1461	25 mm	105
P1462	31 mm	131
P1463	37 mm	176
P1464	50 mm	356
P1465	65 mm	581
P1466	75 mm	975



Brass Royal Pyramid Mirror Cap

(Rate Per Pcs)

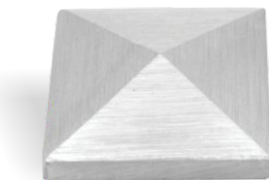
CODE	SIZE	FINISH	
		STANDARD	PVD
P1471	25 mm	128	169
P1472	31 mm	161	225
P1473	37 mm	225	290
P1474	50 mm	412	506
P1475	65 mm	765	900
P1476	75 mm	1125	1294



Brass Pyramid Mirror Cap

(Rate Per Pcs)

CODE	SIZE	FINISH	
		STANDARD	PVD
P1481	12 mm	32	68
P1482	19 mm	49	86
P1483	25 mm	68	109
P1484	31 mm	113	188
P1485	37 mm	161	233
P1486	50 mm	320	413
P1487	65 mm	562	731
P1488	75 mm	684	862



Brass Mirror Cap

(Rate Per Pcs)

CODE	SIZE	STANDARD FINISH
P1491	12 mm	34
P1492	19 mm	45
P1493	25 mm	64
P1494	31 mm	101
P1495	37 mm	124
P1496	50 mm	311



Brass Mirror Dome

(Rate Per Pcs)

CODE	SIZE	STANDARD FINISH
P1501	19 mm	75
P1502	25 mm	101
P1503	37 mm	150
P1504	50 mm	382



Brass Flower Dome

(Rate Per Pcs)

CODE	SIZE	STANDARD FINISH
P1511	25 mm	94
P1512	37 mm	142
P1513	50 mm	206
P1514	65 mm	356
P1515	75 mm	450



Brass Mandir Dome

(Rate Per Pcs)

CODE	SIZE	FINISH	
		STANDARD	PVD
P1521	37 mm	188	282
P1522	50 mm	281	422
P1523	65 mm	469	703



Brass Mirror Stand

(Rate Per Pcs)

CODE	SIZE	HALF	FULL
P1531	6 mm	101	128
P1532	8 mm	109	139
P1533	12 mm	143	176



Brass Mirror Screw C.P.

(Rate Per Gross)

CODE	SIZE	ROUND CAP	CRONICAL CAP
P1541	12 mm	637	1425
P1542	19 mm	637	1425
P1543	25 mm	660	1447
P1544	31 mm	682	1470
P1545	37 mm	716	1508
P1546	50 mm	791	1582
P1547	65 mm	866	1669
P1548	75 mm	998	1800



Round



Cronical

Brass Glass Hinges Ply to Glass (1 Set = 2 Pcs)

(Rate Per Set)

CODE	SIZE	STANDARD FINISH
P1551	6 mm	735
P1552	8 mm	735
P1553	10 mm	1031
P1554	12 mm	1031



Brass Glass Hinges Glass to Glass (1 Set = 2 Pcs)

(Rate Per Set)

CODE	SIZE	STANDARD FINISH
P1561	6 mm	1190
P1562	8 mm	1190
P1563	10 mm	1190
P1564	12 mm	1575



Brass Glass Hinges Direct to Glass (1 Set = 2 Pcs)

(Rate Per Set)

CODE	SIZE	STANDARD FINISH
P1571	6 mm	740
P1572	8 mm	740
P1573	10 mm	840
P1574	12 mm	840



Brass Glass Hinges Hole to Glass

(Rate Per Pcs)

CODE	SIZE	STANDARD FINISH
P1581	-	350



Brass Rope Fittings

(Rate Per Pcs)

CODE	TYPE	STANDARD FINISH
P1591	Top	158
P1592	Top Bottom	296



Top

Top Bottom

Brass Rope Fittings Shelf Support

(Rate Per Pcs)

CODE	SIZE	STANDARD FINISH
P1601	8 mm	145
P1602	12 mm	145



Brass Duster Guard

(Rate Per Pcs)

CODE	SIZE	STANDARD FINISH
P1611	10 mm	154
P1612	12 mm	184
P1613	16 mm	245



Brass Shelf Bracket

(Rate Per Pcs)

CODE	TYPE	STANDARD FINISH
P1621	Single	219
P1622	Double	294



Return Policy

- Returns and exchanges accepted within 14 days of purchase.
- Include all original packaging (box, cover, bubble wrap, accessories) for returns/exchanges.
- GST bill required for returns/exchanges.
- Manufacturer's warranty covers product defects.
- Used items or those with altered finishes are not eligible for returns/exchanges.

Standard Finish



Standard Antique



Standard S.S.



Satin Lacquer



Chrome

Matt Finish



Matt Antique



Matt S.S.



Matt Graphite



Matt Black

PVD Finish



PVD Gold



PVD Black



PVD Rose Gold

PVD Matt Finish



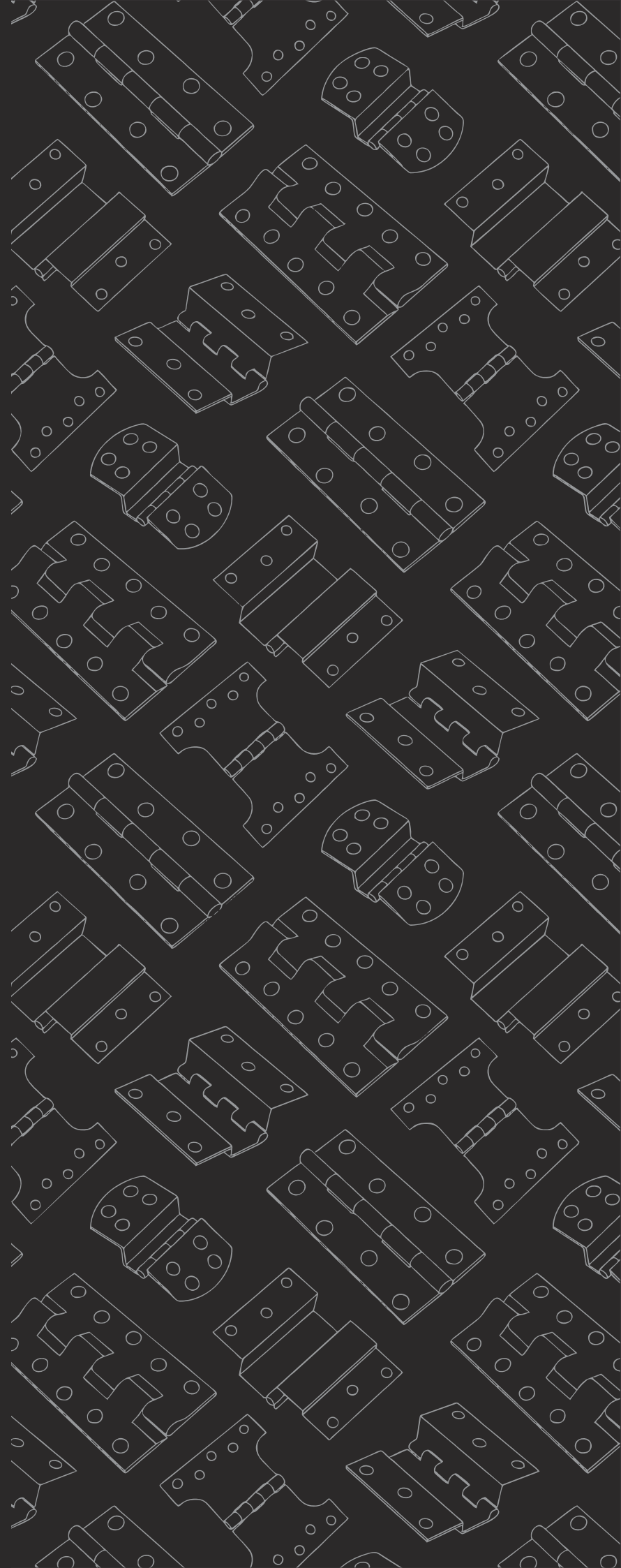
PVD Matt Gold



PVD Matt Rose Gold

Please Note that Black PVD will be charged 5% extra on the given price.

Premium[®]



SARIYA PREMIUM

HARDWARE PRODUCTS PRIVATE LIMITED

Manufacturers of Brass, S.S. & Aluminium Architectural Products

📍 Plot No. 735, GIDC-II,
Jamnagar-361004,
(Gujarat) India.

☎ +91-288-2730442

✉ sariyapremium@gmail.com

🌐 www.premiumbrass.in



एक कदम स्वच्छता की ओर