

MASS IS NOW MARS



MARS

US Technology Collaboration

www.masselevators.in



MARS

US Technology Collaboration

FACTORY & OFFICE



MARS
US Technology Collaboration

Mars Staffs



IEE - EXPO



Acetech Expo



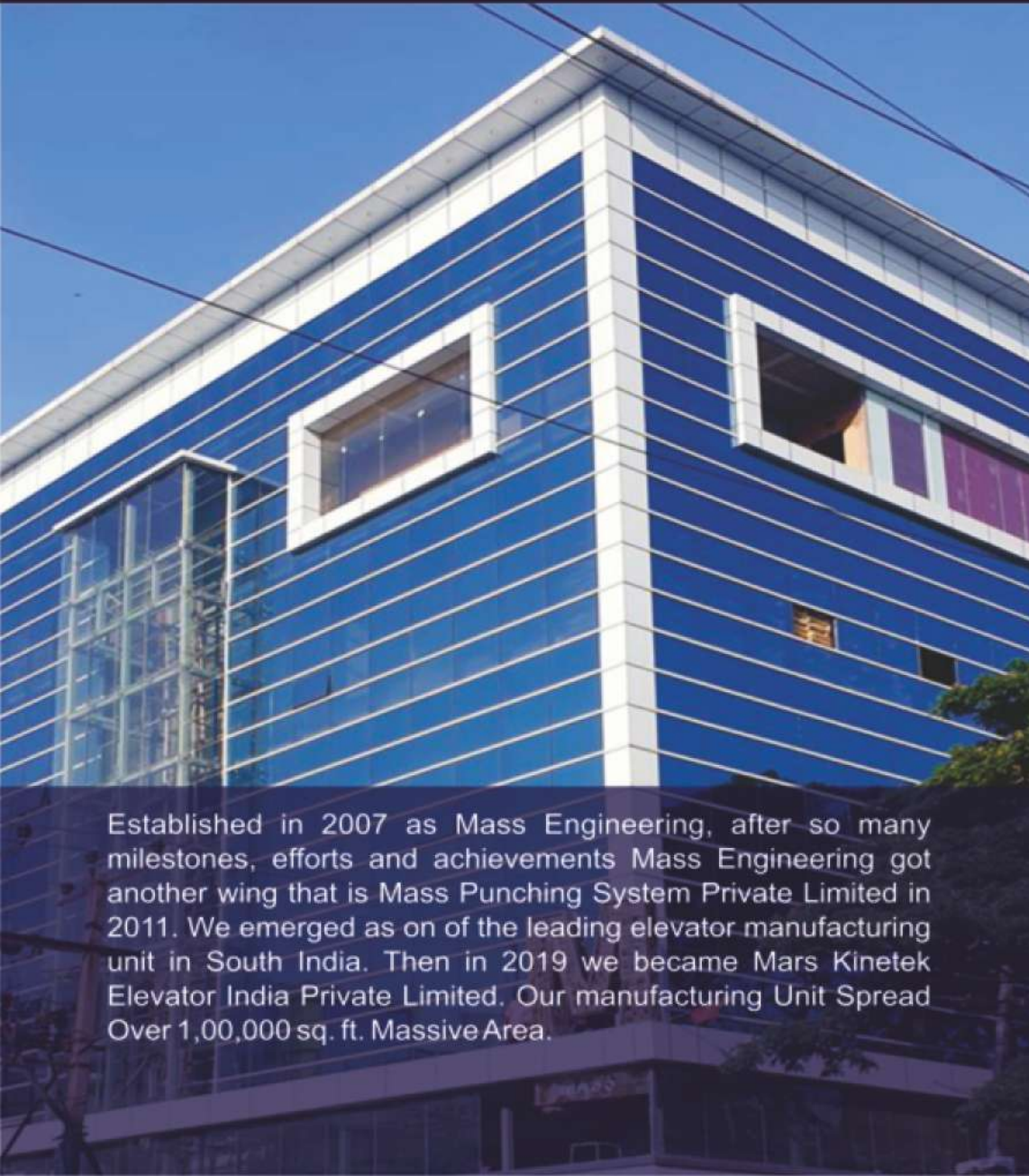
JR & CO Italy



MARS

US Technology Collaboration

ABOUT US



Established in 2007 as Mass Engineering, after so many milestones, efforts and achievements Mass Engineering got another wing that is Mass Punching System Private Limited in 2011. We emerged as one of the leading elevator manufacturing unit in South India. Then in 2019 we became Mars Kinetek Elevator India Private Limited. Our manufacturing Unit Spread Over 1,00,000 sq. ft. Massive Area.



BASAVARAJU D R
MD & CEO



MARS

US Technology Collaboration

PRESTIGIOUS PROJECTS & EVENTS



STRENGTH

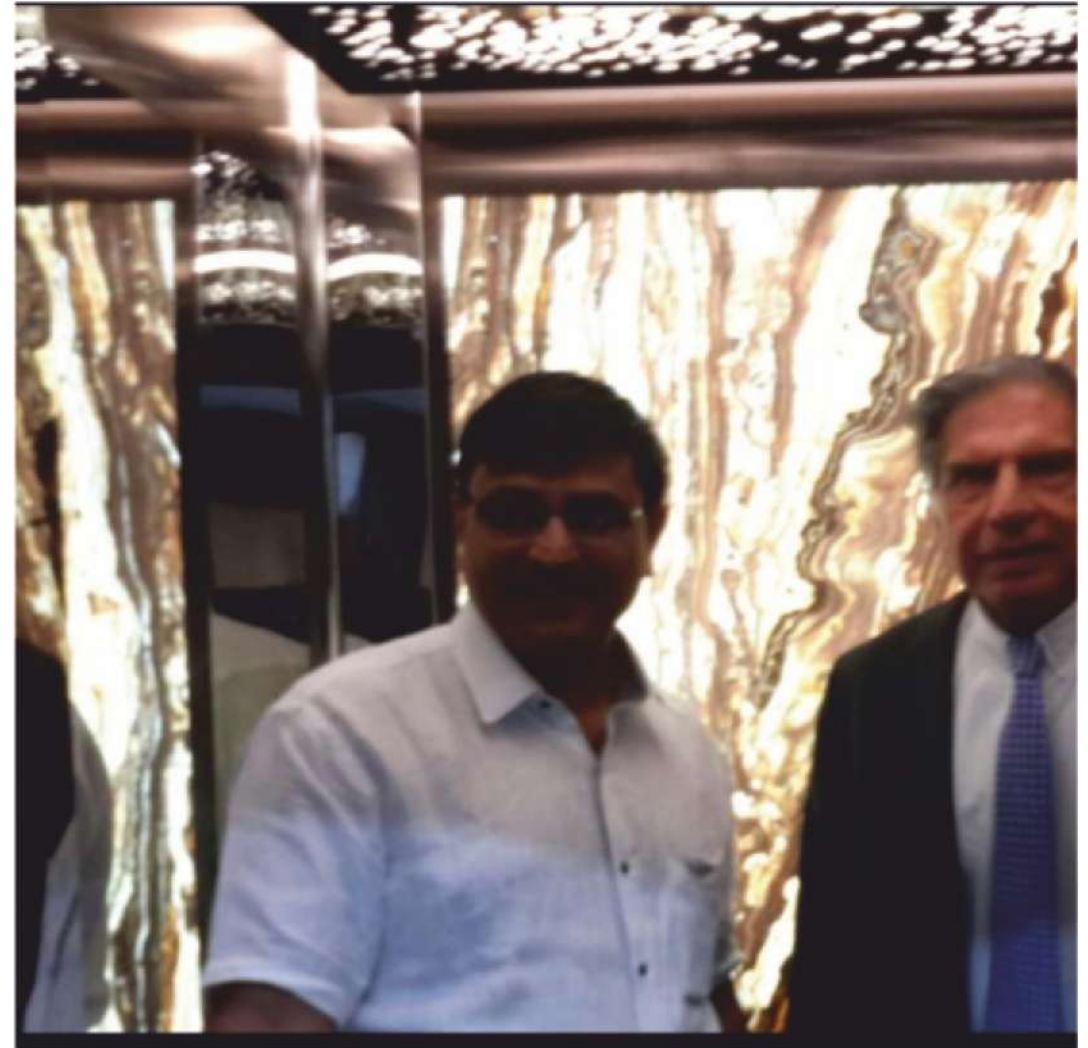
More than 125+ talented and hardworking employees are care strength of the company, He work together, across boundaries to meet the needs of our customer and to help the company win.

MISSION

We provide best design possible with high quality product in market, customized elevators



WITH MORIS & MONTEFFERO



Mr. Rathan Tata House Mumbai with Mr. Mandhar Sahara

MARS KINETEK

US Technology Collaboration



WITH MR. SIDDARAMAIAH (CHIEF MINISTER OF KARNATAKA)



WITH MR. CHIEF SECRETARY OF KARNATAKA



WITH MR. RAVISHANKAR IAS



WITH MR. P. RAVIKUMAR IAS



WITH Ms. KATARINA YAO. CEO OF GENESIS



MARS

US Technology Collaboration

PRESTIGIOUS PROJECTS & EVENTS



THE INDIA WOOD EXHIBITION



WITH MR. MANDAR & ANUPAM KHER



WITH MR. P M VASUDEV (TECHNICAL DIRECTOR OF MARS)



WITH MR. V. SOMANNA



MARS

US Technology Collaboration

SS DESIGN CABIN ASSEY



"Mars Kinetek Elevator India Private Limited", is known for producing high quality range of products and we manufacture these products according to set industry norms. The offered products are manufactured using supreme quality components and latest technology under the strict supervision of our skilled professionals. The components which we use to manufacture these products are procured from the most trustworthy and certified vendors of the industry. These products are highly appreciated among our clients for their optimum performance, low maintenance, easy to operate, smooth functioning and high durability. Further, these products are available in various specifications as per the variegated needs of our valuable clients. In addition to this, we also offer Maintenance & Installation Service to our clients.



WITH MR. SHIVARAJ KUMAR



Mrs. SHOBHA S (DIRECTOR OF MARS)



MARS
US Technology Collaboration

PRESTIGIOUS PROJECTS



**PEARL ACADEMY
MG ROAD (G+9)
4 LIFTS (16P)**





MARS

US Technology Collaboration

MARS SHOW ROOM





MARS

US Technology Collaboration

SS DESIGN CABINS



SS DESIGN CABIN - 01



SS DESIGN CABIN - 02



SS GLASS CABIN - 03



CAPSULE CABIN - 04



SS DESIGN CABIN - 05



SS DESIGN CABIN - 06



CAPSULE CABIN - 07



SS GLASS CABIN - 08



SS GLASS CABIN - 09



SS GLASS CABIN - 10



MARS

US Technology Collaboration

DOOR DESIGNS



GOLD GLASS LIFT



Wood Cabin (J.P. Nagar)



Mirror Glass Door (HMT Layout)



S.S. Door (Trinity NDT Peenya)



Gold Cabin (Raju G.G. Palya)



Gold Glass Door (Megha Punch)



Design Cabin (Near BIEC)



MARS

US Technology Collaboration

MASS HOUSE



LAKSHMI

#46, 2nd Cross, Suvarna Nagar,
Doddabidarakal, Bangalore - 73.

MASS HOUSE, Glass Lift G+4, (8 Pass,)



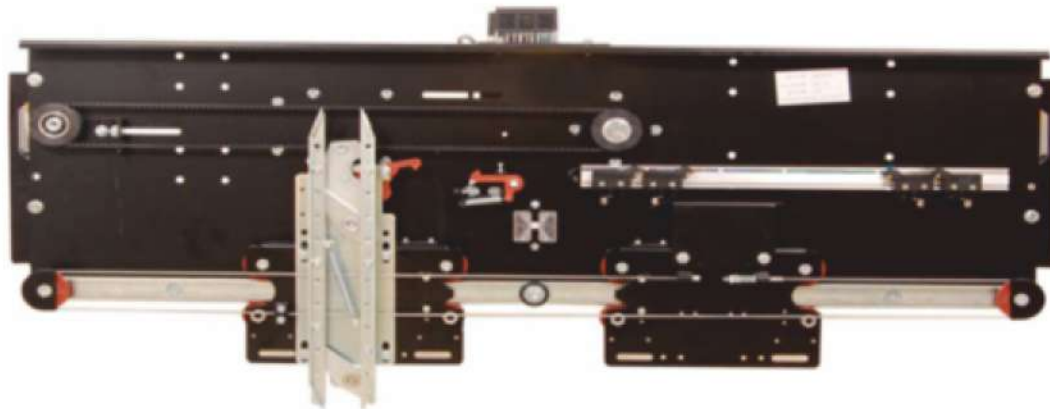
MARS

US Technology Collaboration

GENESIS TELESCOPIC CAR OPERATORS & LANDING HEADERS



GENESIS AUTOMATIC CENTER OPENING CAR OPERATORS & LANDING HEADERS





MARS

US Technology Collaboration

GEARLESS MACHINES



MONA BELT DRIVE



Sicor Machines
Geared & gearless



MONA MCK SERIES



MONA 200 SERIES



MONA 200 SERIES

At "Mars Kinetek Elevator India Private Limited", we use the latest kind of traction machine for major high rise elevations designed and manufactured to offer easy trouble shooting with reduced number of moving parts and problem of alignment. These units save space, reduce load on infrastructure, consumes less electricity, works more efficiency with easy maintenance, stable brake adjustments and rare shut downs.



MARS

US Technology Collaboration

ELEVATOR ACCESSORIES



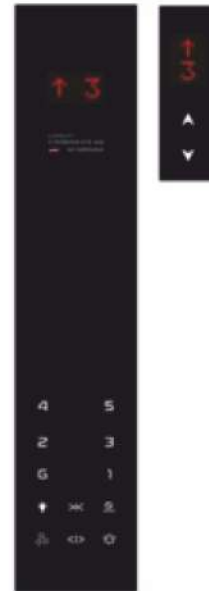
RECO WALL



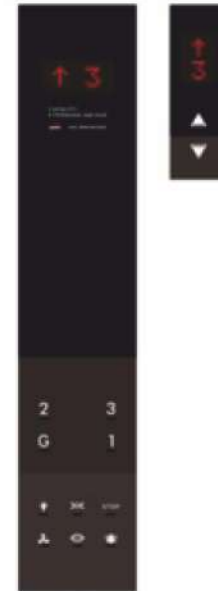
LEGO



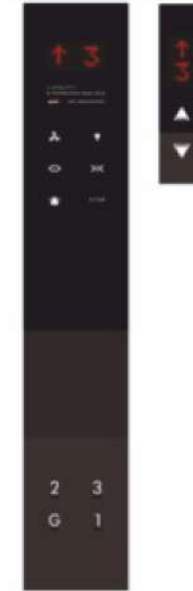
AURA



EDGE



AIRI



MOJO



Touch COP



Touch IOP



MONARCH CONTROLLER



DOOR DRIVE



BRACKETS





MARS

US Technology Collaboration

INFRASTRUCTURE : 01



CNC Turret Punch Press - AMADA AE2510NT

CNC TPP From 0.5 to 3.2mm Thick
Sheet size 1250 Width x 2500mm without Repositioning.
Up to 3000mm Length is also Possible for
Punching Capacity-20Ton

CNC Press Break AMADA RGM2

BENDING:

Components can be bend up to 3mm of any material with an accuracy of 0.2mm by using CNC Press break Machine. Up to 0.8 to 3.00mm steel sheet for the length of 2.5mm with tab folding accuracy of ± 0.2 mm.





Fiber Laser Cutting Machine - AMADA



CNC V Grooving Machine



HDS Press Break Machine - AMADA

Fiber Laser Cutting Machine, industrial high precision cutting machine for Plate and Tube. Not only suitable for sheet metal cutting, but also cutting square tube, round tube, flat round tube and other shapes of various metal materials. Also equipped big cover, It's safe and environmentally friendly.

1. High power servo motor, faster running speed is ensured.
2. Heavy-duty industrial steel structure, low resonance, high-speed running, more stable in operation.
3. Automatic focusing cutting head, thick plate perforation and cutting more perfect. Adopt intelligent gas set device, more convenient for processing.
4. More professional industrial control system with more functions.



MARS

US Technology Collaboration

MOTORS

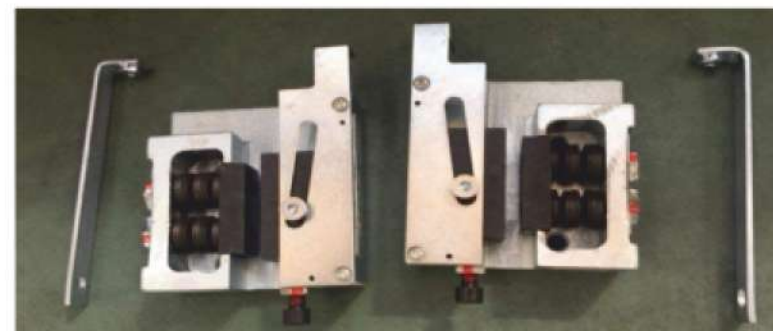




MARS

US Technology Collaboration

STRUCTURE WITH GLASS LIFT



GLASS LIFT

SAFETY

OSG



MARS

US Technology Collaboration

CAR FRAME & SHAFT





MARS

US Technology Collaboration

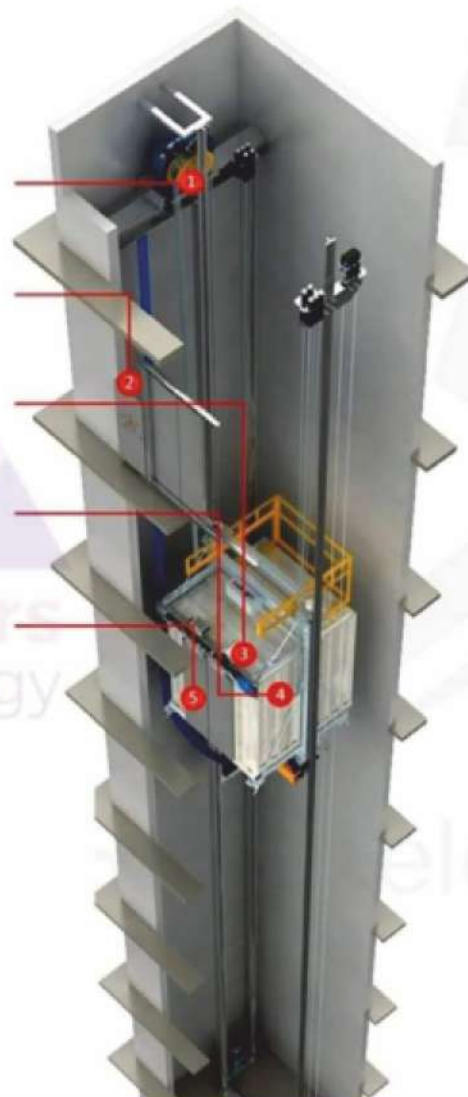
ROOM & ROOM LESS



SMALL MACHINE ROOM
PASSGERELEVATOR



MACHINE ROOM LESS
PASSGER ELEVATOR



- 1 Efficient traction machine
- 2 Control system
- 3 Door operator
- 4 Car
- 5 Door





MARS

US Technology Collaboration

EVENTS



Siddharth DCP Excellence Award at Sherton



With Mr. Ravikanthe Gowda



UMA Kureshi Economic Times (Power Icons)



Business Achievement Award India 2022



With Mr. Venugopal, Mega Punch MD



MARS

US Technology Collaboration

EVENTS

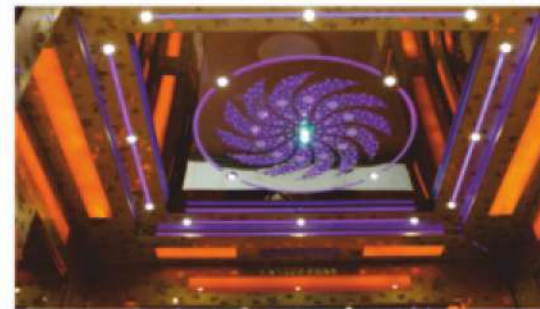




MARS

US Technology Collaboration

FALSE CEILING DESIGNS





MARS

US Technology Collaboration

PRESTIGIOUS PROJECTS & EVENTS





MARS

US Technology Collaboration

PRESTIGIOUS PROJECTS & EVENTS





MARS

US Technology Collaboration

PRESTIGIOUS PROJECTS & EVENTS



MARS KINETEK ELEVATORS

US TECHNOLOGY COLLABORATION

CONTACT:
9980077466 / 9845300057





MARS

US Technology Collaboration

PRESTIGIOUS PROJECTS & EVENTS





MARS

US Technology Collaboration

PRESTIGIOUS PROJECTS & EVENTS





MARS

US Technology Collaboration

PRESTIGIOUS PROJECTS & EVENTS

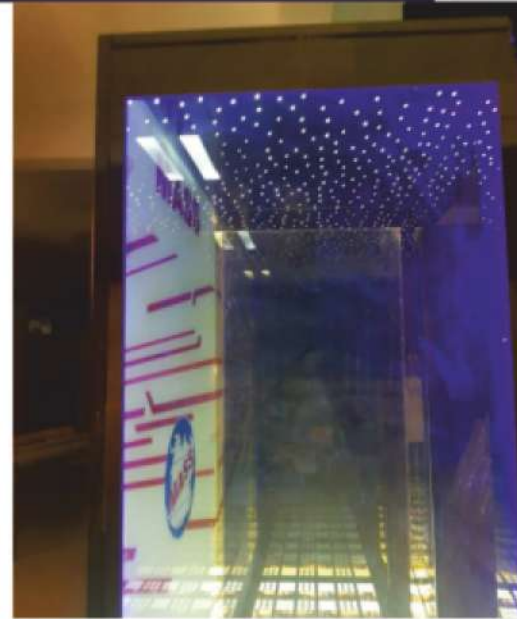




MARS

US Technology Collaboration

PRESTIGIOUS PROJECTS & EVENTS





MARS

US Technology Collaboration

PRESTIGIOUS PROJECTS & EVENTS





MARS

US Technology Collaboration

PRESTIGIOUS PROJECTS & EVENTS





MARS

US Technology Collaboration

PRESTIGIOUS PROJECTS & EVENTS





MARS

US Technology Collaboration

PRESTIGIOUS PROJECTS & EVENTS





MARS

US Technology Collaboration

PRESTIGIOUS PROJECTS & EVENTS





MARS

US Technology Collaboration

PRESTIGIOUS PROJECTS & EVENTS



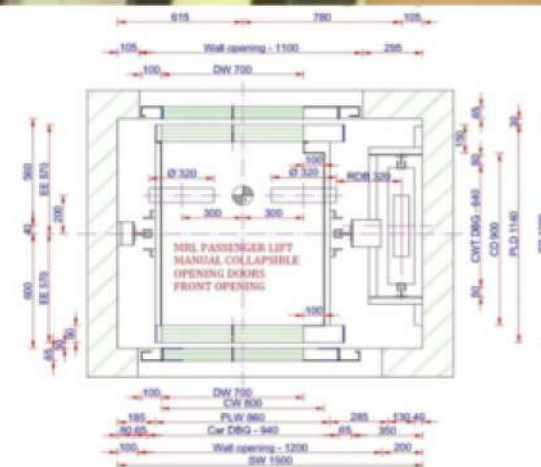


MARS

US Technology Collaboration

PRESTIGIOUS PROJECTS & EVENTS



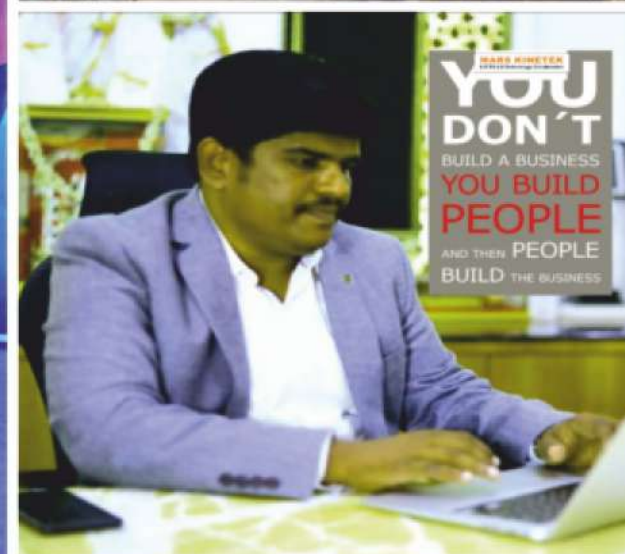




MARS

US Technology Collaboration

PRESTIGIOUS PROJECTS & EVENTS





MARS

US Technology Collaboration

MARS





MARS

US Technology Collaboration





MARS

US Technology Collaboration

EXHIBITIONS





MARS

US Technology Collaboration

PRESTIGIOUS PROJECTS & EVENTS



MARS

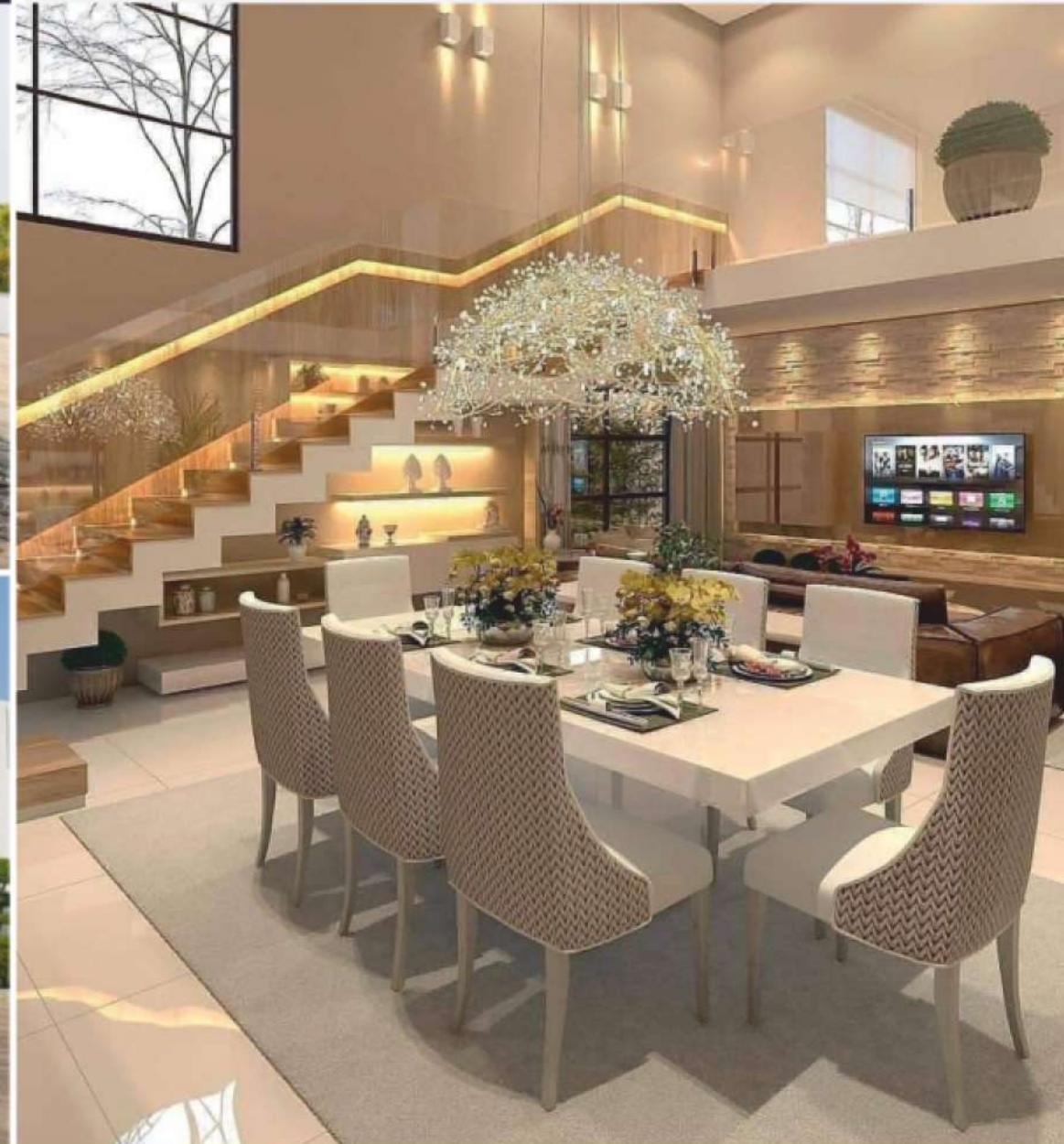
US Technology Collaboration



MARS

US Technology Collaboration

PRESTIGIOUS PROJECTS & EVENTS





MARS

US Technology Collaboration

PRESTIGIOUS PROJECTS & EVENTS

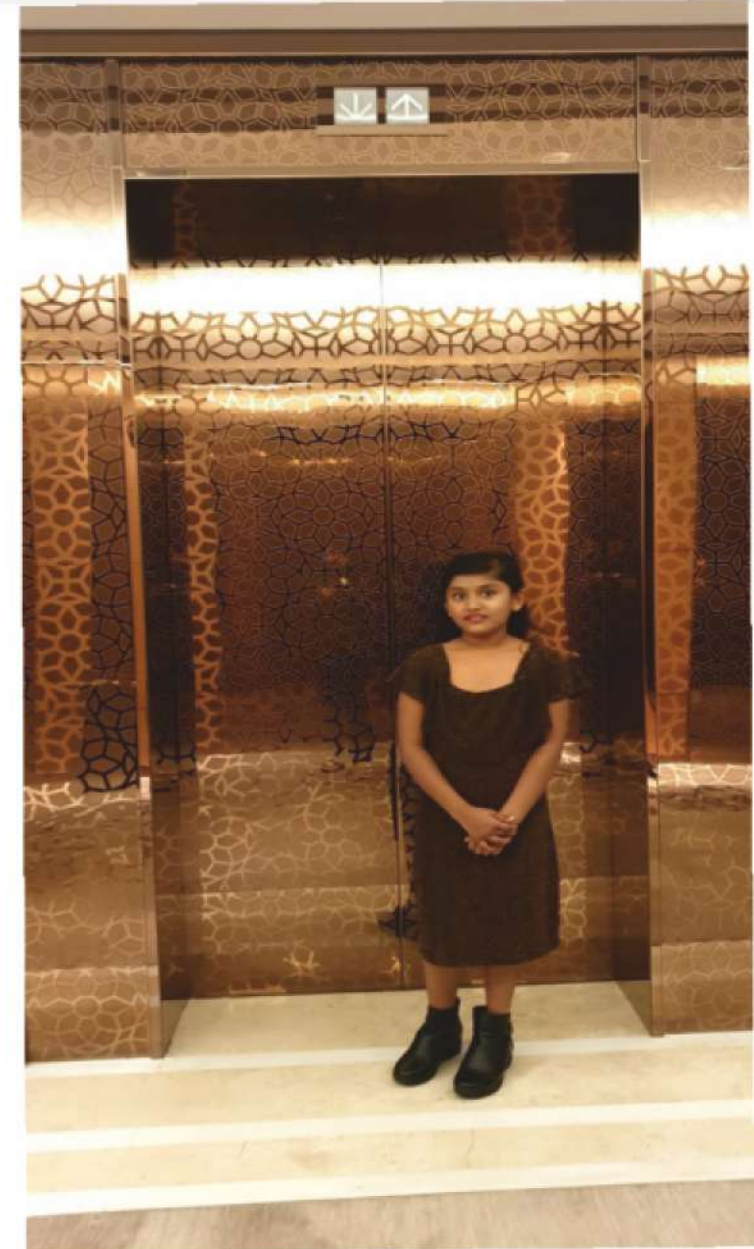




MARS

US Technology Collaboration

PRESTIGIOUS PROJECTS & EVENTS





MARS

US Technology Collaboration

PRESTIGIOUS PROJECTS & EVENTS





MARS

US Technology Collaboration

PRESTIGIOUS PROJECTS

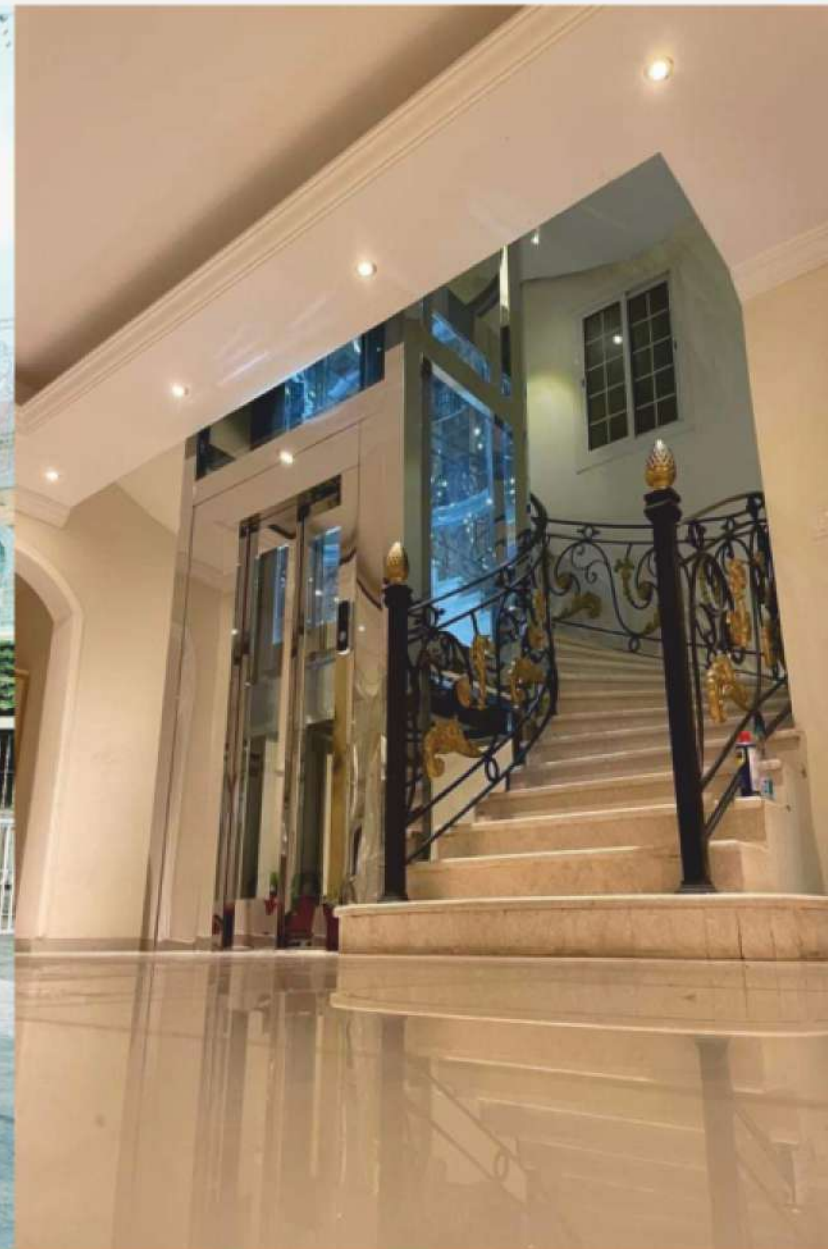




MARS

US Technology Collaboration

HOME LIFT





MARS

US Technology Collaboration

PRESTIGIOUS PROJECTS & EVENTS





MARS

US Technology Collaboration

PRESTIGIOUS PROJECTS & EVENTS





MARS

US Technology Collaboration

PRESTIGIOUS PROJECTS & EVENTS

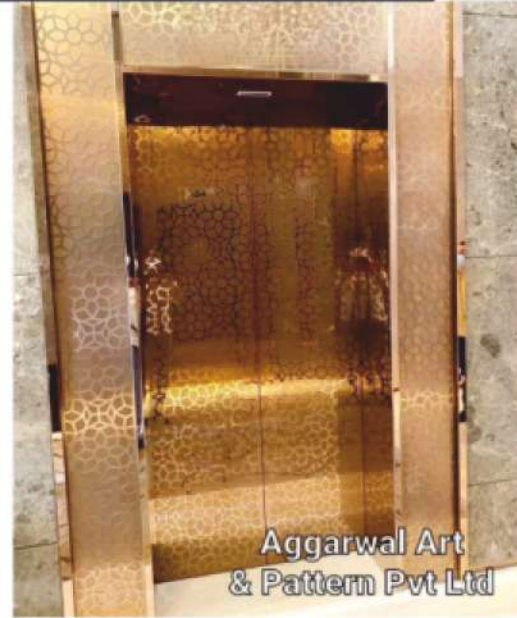




MARS

US Technology Collaboration

PRESTIGIOUS PROJECTS & EVENTS





MARS

US Technology Collaboration

PRESTIGIOUS PROJECTS & EVENTS





MARS

US Technology Collaboration

PRESTIGIOUS PROJECTS & EVENTS





MARS

US Technology Collaboration

PRESTIGIOUS PROJECTS & EVENTS





MARS

US Technology Collaboration

PRESTIGIOUS PROJECTS & EVENTS





MARS

US Technology Collaboration

MARS OFFICE





MARS

US Technology Collaboration

MARS OFFICE





MARS

US Technology Collaboration

PRESTIGIOUS PROJECTS





MARS

US Technology Collaboration

PRESTIGIOUS PROJECTS





MARS

US Technology Collaboration

PRESTIGIOUS PROJECTS

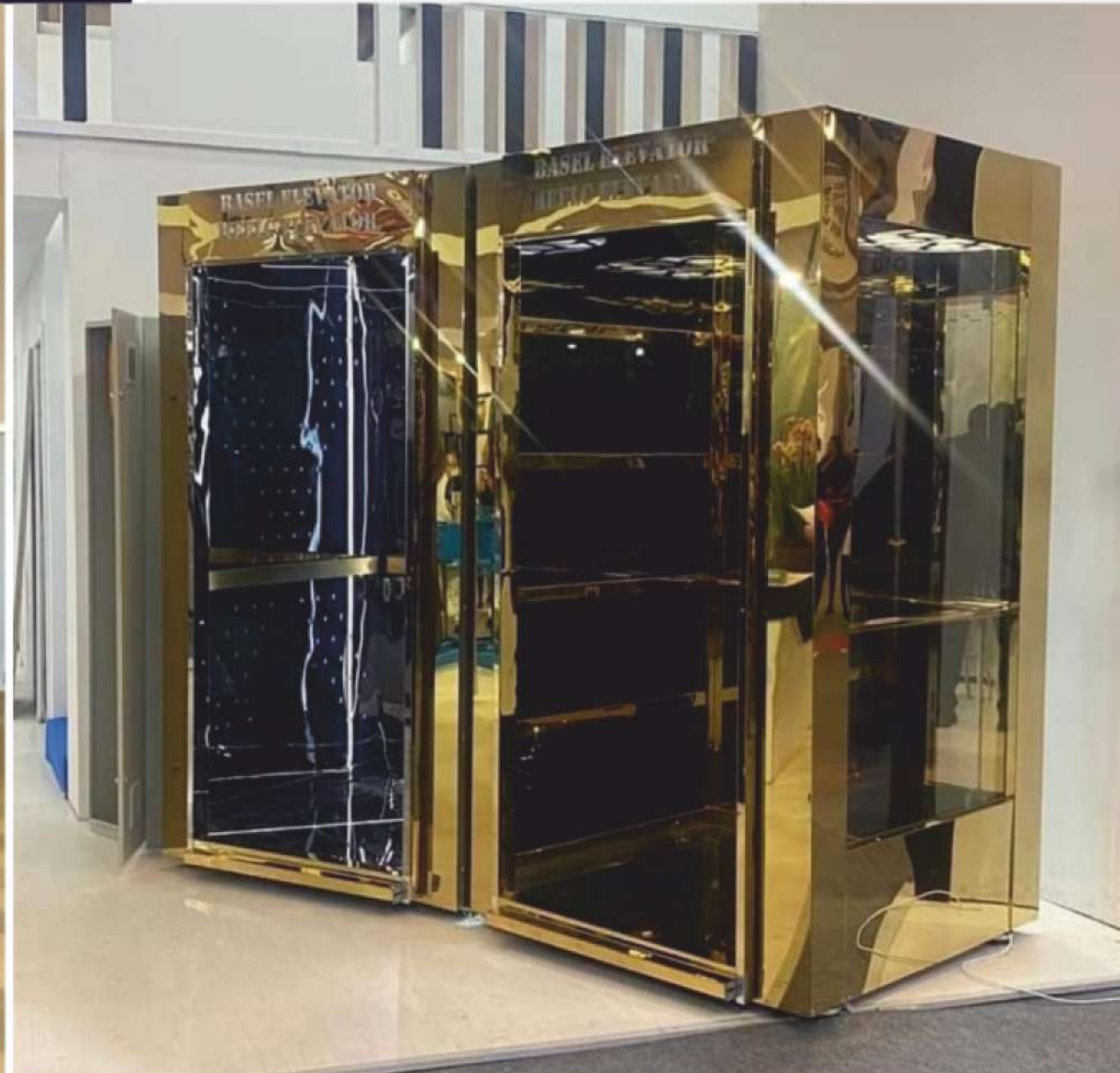




MARS

US Technology Collaboration

PRESTIGIOUS PROJECTS





MARS

US Technology Collaboration

HOME LIFT



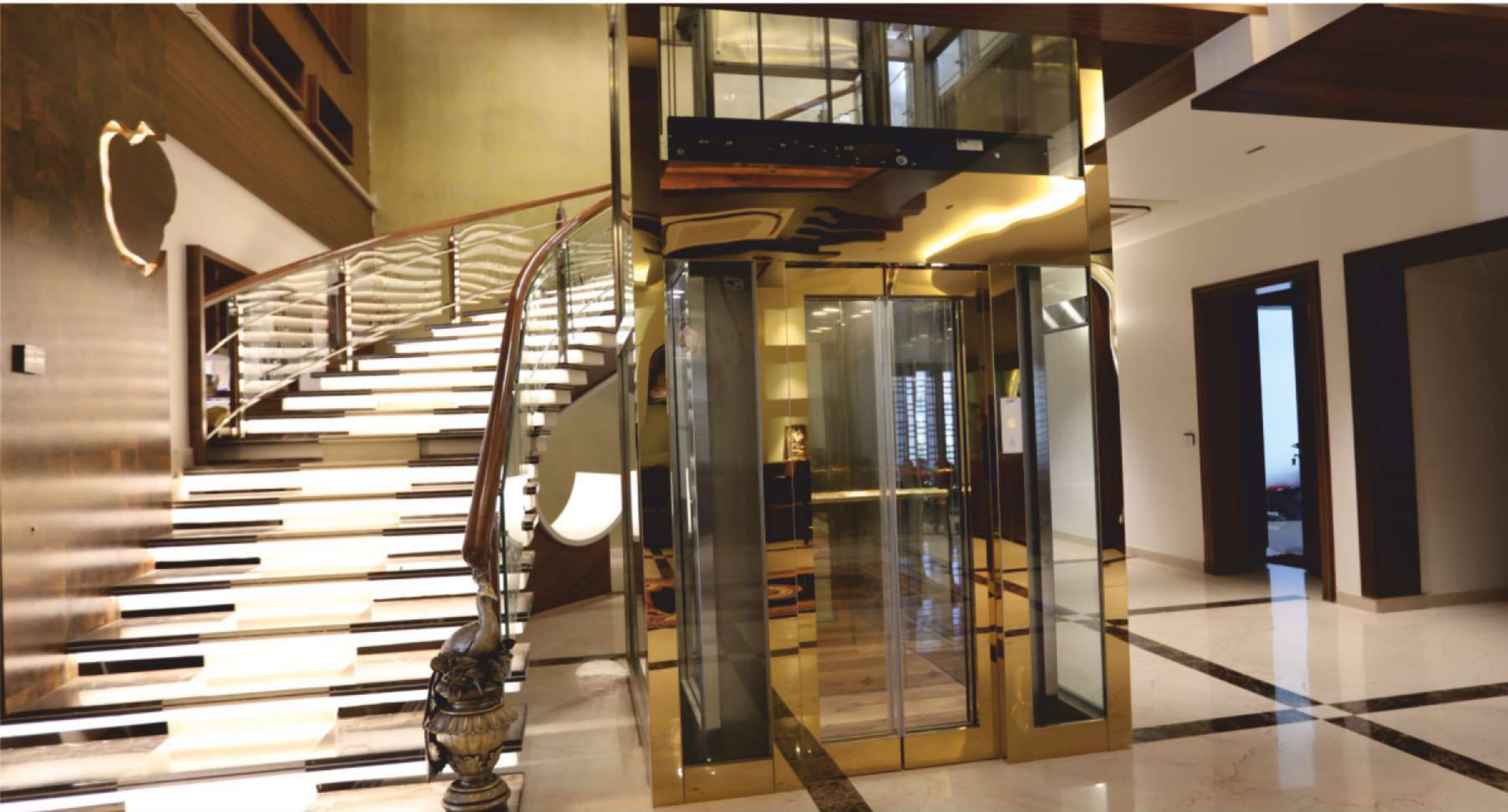
honor 9

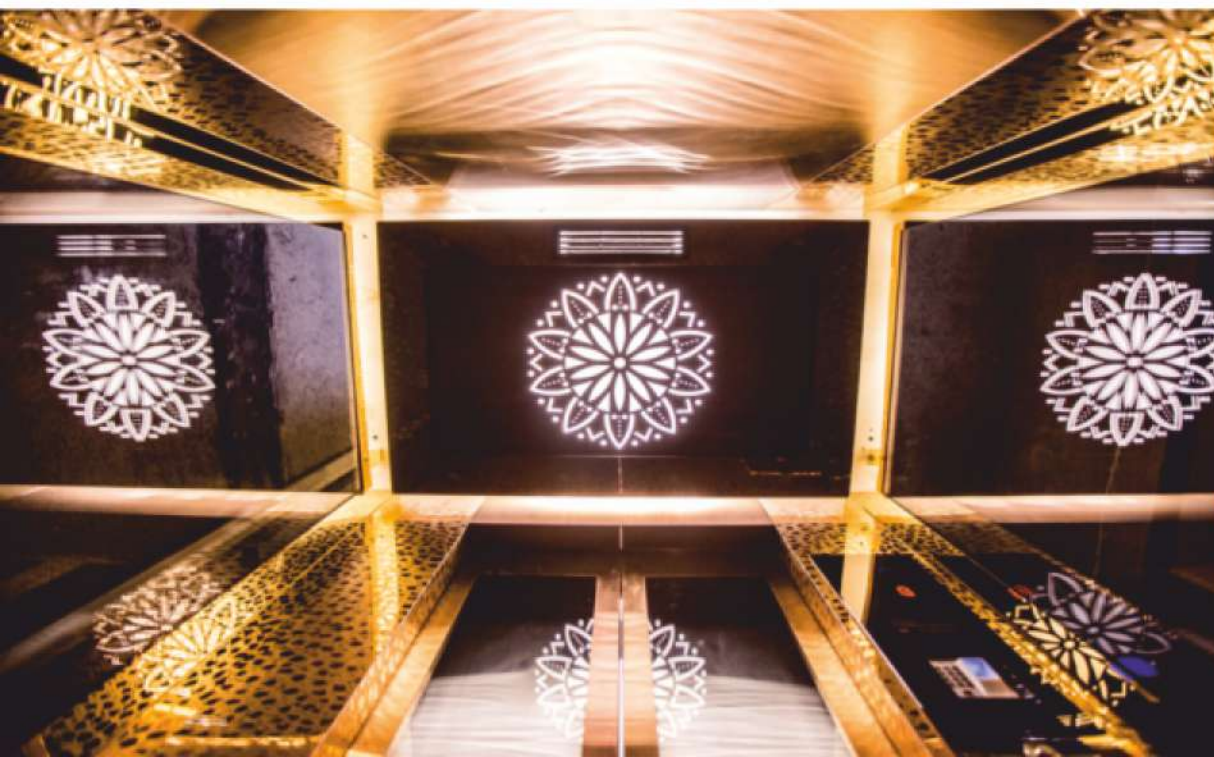


MARS

US Technology Collaboration

HOME LIFT







MARS

US Technology Collaboration

EVENTS





MARS

US Technology Collaboration

BRANDS & TECHNICAL COLLABORATION



TORIN DRIVE
INDIA PRIVATE LIMITED

Made in USA



monoDrive

Made in Japan

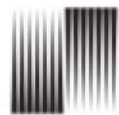


Montanari Group
GEARLESS & GEARBOX
TRACTION MACHINES

Made in Italy



Made in India



OMAR

Made in Italy



MORIS
Macchine Oleodinamiche
Riduttori Impianti Speciali

Made in Italy

BONLY



BOSCH



Bharat Bijlee



usha martin

SHARP



TATA STEEL



3M





MARS
US Technology Collaboration

BENGALURU



WORLD TRADE CENTER BANGALORE



MASS

MASS

INFRASTRUCTURE

MASS

MASS



MARS

MARS KINETEK ELEVATORS INDIA PVT LTD

US Technology Collaboration

HEAD OFFICE ADDRESS :

R G Tower # 485/9, Peenya 14th Cross,
Peenya 4th Phase, Bangalore - 560058.

Ph: 080-28361699 / 99800 77466

Email: masselevators@yahoo.in

Website: info@masselevators.in