



INDUSTRIAL PUMPS & INSTRUMENT
C O M P A N Y



Elevate Efficiency,
Drive Excellence:
Pumping the Pulse of Industry!

www.industrialpumpsandinstruments.com



Huzefa Estatewala
(Director)

Since its inception 23 years ago, Industrial Pumps and Instrument Co., has been a pioneering force in the industrial solutions sector, specializing in top-of-the-line pressure gauges, transmitters, oil and chemical pumps. Founded with a vision to provide unparalleled quality and service to clients, It has continuously exceeded expectations, earning a sterling reputation both domestically in India and abroad. Our longstanding partnerships with esteemed brands such as Wika, Micro, Rotofluid, Taha and Orion have fortified our position as a trusted supplier in the industry.

Through these enduring alliances, we have consistently delivered innovative solutions to our customers, catering to their diverse needs and surpassing industry standards. Our unwavering commitment to customer satisfaction has enabled us to not only maintain a stronghold in the Indian market but also expand our reach globally.

Mission

At Industrial Pumps & Instrument Co.,

our mission is to deliver cutting-edge industrial solutions that exceed customer expectations. We are committed to providing reliable products, exceptional service, and innovative solutions that contribute to the success and efficiency of our clients' operations.

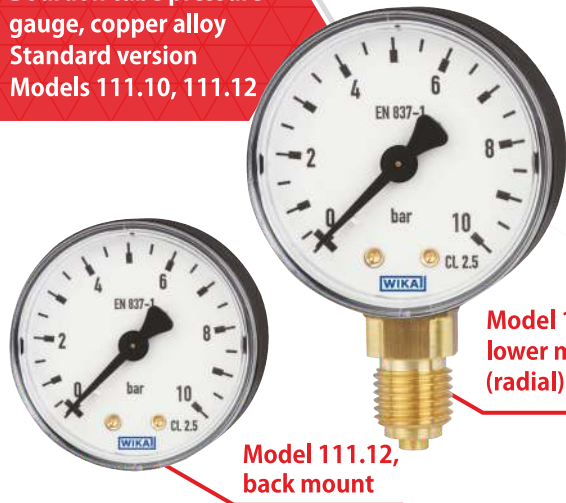
Quality Assurance

We pride ourselves on the quality of our products. All items in our inventory undergo rigorous testing and quality assurance processes to ensure they meet the highest industry standards. This commitment to quality ensures the reliability and longevity of our solutions.

Vision

As the Director of Industrial Pumps & Instrument Co., my vision is to position our company as the foremost provider of industrial solutions, setting the benchmark for excellence and innovation in the field. We aspire to be the go-to partner for businesses seeking top-notch pressure gauge and transmitter systems, as well as chemical and oil pumps from esteemed brands like Wika, Micro, Rotofluid, and Taha.

Bourdon tube pressure gauge, copper alloy Standard version Models 111.10, 111.12



Model 111.10, lower mount (radial)

Model 111.12, back mount

Application

- » For gaseous and liquid media that are not highly viscous or crystallising and will not attack copper alloy parts
- » Pneumatics
- » Heating and air-conditioning technology
- » Medical engineering

Special Features

- » Reliable and cost-effective
- » Design per EN 837-1 or ASME B40.100
- » Nominal size 40 [1 1/2"], 50 [2"], 63 [2 1/2"], 80 [3"], 100 [4"] and 160 [6"]
- » Scale ranges to 0 ... 400 bar [0 ... 6,000 psi]

Pressure transmitter For general industrial applications Model A-10



Application

- » Machine building
- » Measurement and control technology
- » Hydraulics and pneumatics
- » Pumps and compressors
- » Shipbuilding

Special Features

- » Excellent quality and proven technology
- » Exceptionally large variety covers almost all applications
- » All configurable variants are available at short notice from quantities of 1 upwards
- » Particularly cost-efficient

Application

- » For measuring locations with high dynamic pressure loads and vibrations
- » For gaseous and liquid media that are not highly viscous or crystallising and will not attack copper alloy parts
- » Hydraulics
- » Compressors, shipbuilding

Special Features

- » Very good vibration and shock resistance
- » Especially robust design
- » Type approval for the shipbuilding industry
- » Scale ranges to 0 ... 1,000 bar or 0 ... 15,000 psi

Bourdon tube pressure gauge, model 213.53.100, lower mount



Bourdon tube pressure gauge, model 232.50, NS 100 [4"]



Application

- » For gaseous and liquid aggressive media that are not highly viscous or crystallising, also in aggressive environments
- » Chemical and petrochemical industries, oil and gas industry, power engineering and also water and wastewater technology
- » Machine building and general plant construction

Special Features

- » Excellent load cycle stability and shock resistance
- » With case filling (model 233.50) for applications with high dynamic pressure loads and vibrations
- » Completely from stainless steel
- » Scale ranges from 0 ... 0.6 to 0 ... 1,600 bar or 0 ... 10 to 0 ... 20,000 psi

Application

- » Hydraulics and pneumatics
- » Pumps and compressors
- » Machine building

Special Features

- » Always the ideal solution, whether standard or customer specific
- » Long-term stability – Reliable measured values over the complete life cycle
- » Consistent quality and delivery performance

OEM pressure sensor For industrial applications Model O-10 (T)



Flush pressure transmitter For viscous & particle-laden media Model S-11



Pressure transmitter model S-11 with cooling element

Pressure transmitter model S-11

Application

- » General industrial applications
- » Food and beverage industry
- » Filling and packing machinery
- » Dosing technology
- » Level measurement

Special Features

- » High-quality product
- » Many configurations possible
- » Flush process connection
- » Large stocks for short delivery times
- » Vacuum-tight

Pressure transmitter For applications in hazardous areas Model IS-3



With field case

High-pressure version

With angular connector and flush process connection

Application

- » Chemical, petrochemical industry
- » Oil, natural gas
- » Machine building

Special Features

- » Measuring ranges from 0 ... 0.1 to 0 ... 6,000 bar [0 ... 3 to 0 ... 15,000 psi]
- » Approved for use in hazardous areas, e.g. ATEX, IECEx, FM and CSA

High-quality pressure transmitter For general industrial applications Model S-20



Application

- » Critical industrial applications
- » Demanding applications in research and development
- » Harsh environments in the process industry

Special Features

- » Measuring ranges from 0 ... 0.4 to 0 ... 1,600 bar (0 ... 10 to 0 ... 20,000 psi)
- » Non-linearity of up to 0.125 % of span
- » Different output signals, e.g. 4 ... 20 mA, DC 0 ... 10V, DC 1 ... 5V and others
- » Market-standard electrical connections, e.g. DIN EN 175301-803 A angular connector
- » Common international process connections

Application

- » Process industry
- » Machine building and plant construction

Special Features

- » For the connection of Pt100 and Pt1000 sensors in a 2-, 3- or 4-wire connection
- » For the connection of reed chains in a potentiometer circuit
- » Parameterisation with the WIKAI soft-TT configuration software and electrical connection via quick connector magWIK
- » Connection terminals also accessible from the outside
- » Accuracy < 0.2K (< 0.36 °F) / 0.1 %

Digital temperature transmitter For resistance sensors, head-and rail-mounted version Models T15.H, T15.R



Head mounting version, model T15.H

Rail mounting version, model T15.R

**Pressure switch
For industrial
applications
Model PSM-520**



**Pressure switch,
model PSM-520**

Application

- » Pumps
- » Compressors

Special Features

- » Adjustable on site
- » Protection cap for switch point setting
- » Setting ranges:
-0.4 ... +7 to 6 ... 30 bar
-6 ... 100 to 85 ... 425 psi
-0.04 ... +0.7 to 0.6 ... 3 MPa
- » Electrical rating up to AC 230 V, 50/60 Hz, 10 A

**Solenoid valve
Model WSV**



**Solenoid valve,
model WSV**

Application

- » Oil and gas burners
- » Liquid metering systems
- » Compressed air systems
- » Irrigation systems

Special Features

- » Sturdy heavy duty forged body
- » Robust solenoid coil
- » Low power consumption
- » Tight shut-off

Application

- » Pumps
- » Lubrication systems
- » Hydraulic systems
- » Autoclaves

Special Features

- » Non-repeatability $\leq 1\%$
- » Setting ranges for vacuum, +/- and gauge pressure



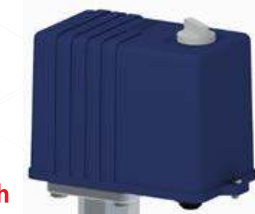
**Pressure switch,
heavy-duty version
For superior industrial
applications
Model PSM-550**

Application

- » Air compressor
- » Water pump

Special Features

- » Setting ranges
1 ... 5 to 6 ... 16 bar
- » Electrical rating up to
AC 440V 16A
- » Including on/off knob to
control switching manually.
- » Integrated relief valve to ensure smooth
restart of the compressor.



**Pressure switch
mechanical,
model PSM-630**



**Pressure switch
mechanical with relief
valve, model PSM-630**

**Pressure switch,
heavy-duty version
TPST / DPST
Model PSM-630**

**Pressure switch mechanical
for refrigeration applications
With settable/fixed differential
Model PSM-690**



**Refrigeration pressure
switch, single pressure
port, model PSM-690**



**Refrigeration pressure
switch,
dual pressure port,
model PSM-690**

Application

- » Refrigeration compressors
- » Chillers
- » Driers
- » HVAC

Special Features

- » Robust mechanism
- » Auto or manual reset
- » Designed for use in refrigeration systems
- » No tools required to adjust the setpoint
- » Fail safe double ply bellow element for high pressure

**Temperature switch
Model TSM-550**



**Temperature switch,
model TSM-550**

Application

- » Pumps, filters
- » Lubrication system,
hydraulic system
- » HVAC
- » Circuit breakers
- » Turbines

Special Features

- » Wide adjustable range
- » Adjustable on-off differential
- » Sturdy snap action switch
- » Repeatability $\pm 1\%$
- » Weatherproof to Ip67

Confirming to
EN-837-1 & IS-3624



MS PRESSURE
GAUGE
BOTTOM
CONNECTION

MS PRESSURE
GAUGE
Back connection

Application

- » Compressors
- » Filters
- » Regulators
- » Water Pumps
- » Beverage-dispensing equipment
- » Paint sprayers
- » Air conditioning
- » Pneumatic control systems
- » Fire sprinkler system etc.

Electrical Contact
Gauge



Application

- » Monitoring
- » Controlling & Regulating Industrial Processes by using contact signals.

Application

- » Air Compressors
- » Hydraulic Press
- » Pump
- » Marine Engines
- » Pipe line & Transmission station where vibration & pulsation are destructive factor



SS Pressure Gauge

Nominal size :

Ø 40, 50, 63, 100, 115, 150, 200, 250 & 300 mm

Accuracy :

≤ Ø 63 mm - ± 1.6% of FS (± 1% of FS Optional)
≥ Ø 100 mm - ± 1% of FS (± 0.5% of FS Optional)

Pressure range

-30" Hg .. 0 ... 700 bar (1000 bar optional)

Optional Available features :

Ammonia (NH₃), Freon Scale
Customized Scale with different Unit of Measurement or logo
For Oxygen (O₂) Application decrease wetted parts

Over pressure limit :

≤ 100 bar - 125% of FS
> 100 bar < 600 bar - 115% of FS
> 600 bar < 1600 bar - 110% of FS

Type of mounting

Bottom Connection Direct Mounting
Bottom Connection Surface Mounting
Back Connection Panel Mounting (Ø 63 mm only)

Application

- » Pulp & Paper Industries
- » Food processing plant
- » Pharmaceutical Ind.
- » Dairy Plants
- » Paper & Pulp Ind.

HOMOGENISER
GAUGE



DIAPHRAM SEALED
GAUGES

SS MMWC Gauge



Application

- » Gas regulators
- » Boilers/furnace manufacturer
- » Ventilation and air conditioning equipments
- » Artificial respiration devices
- » Lead testers
- » Exhaust system
- » Blowers
- » Filter monitoring and level indication etc.



Master Gauge



Application

- » Field inspection
- » Calibration & Testing Labs
- » Testing & Validation etc

Temperature Gauge



Application

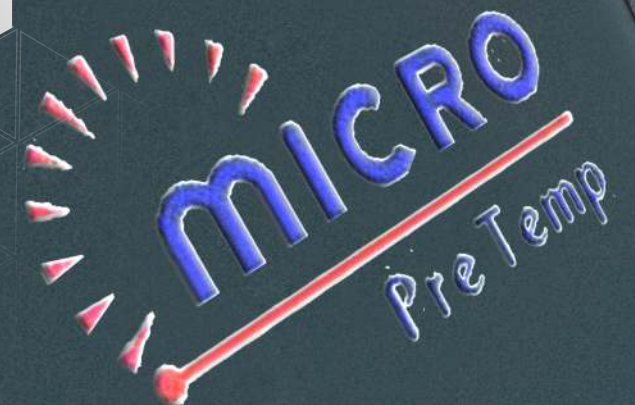
- » Extrusion & Polymer processing
- » Industrial application where medium temperature is very high
- » Gas regulators
- » Boilers/furnace manufacturer
- » Ventilation and air conditioning equipments
- » Artificial respiration devices
- » Lead testers
- » Exhaust System
- » Blowers
- » Filter monitoring and level indication etc

Micro Diaphragm Pressure switch



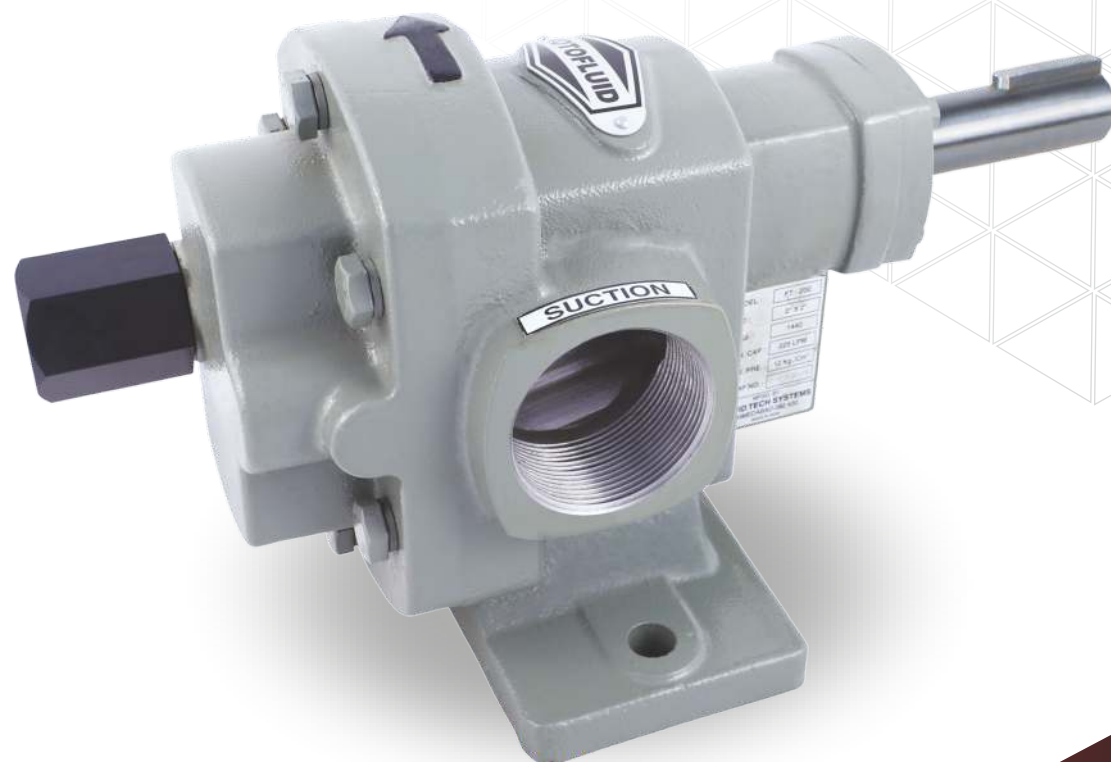
Application

- » Power Generation & Distribution
- » Textile
- » Boiler
- » Furnace
- » Railway
- » Steel Plant
- » Fertilizer Unit
- » Pulp & Paper Industries
- » Pharmaceutical plants
- » Food & Beverage Industries
- » Cement Industries etc.



Series

FT



Rotary Gear Pump Material of Construction

Part	Material For Standard	Material For H.T.
Body	IS.210 FG 220 C.I. Grade	IS.210 FG 220 C.I. Grade
Back Cover	IS.210 FG 220 C.I. Grade	IS.210 FG 220 C.I. Grade
Gland Cover	IS.210 FG 220 C.I. Grade	IS.210 FG 220 C.I. Grade
R.H. & L.H. Gear	EN-8	EN-24 [H. Nitrated]
Rotor/Stator Shaft	EN-19	EN-19
Bearing[Bushes]	Non Ferrous Sintered Bronze	Non Ferrous Sintered Bronze
Sealing	Neoprene oil Seal / Mechanical seal	"GFO" Pack Teflon / Mechanical Seal
R.V. Cap	Aluminum	Aluminum
Key for coupling	EN-8	EN-8

Technical Specification

Model	Suction & Delivery Size	Capacity at 1440 RPM		
		LPM	US GPM	M ³ /hr
FT - 025	1/4" x 1/4"	2.5	0.6	0.1
		5	1.3	0.3
FT - 050	1/2" x 1/2"	10	2.6	0.6
		20	5.2	1.2
FT - 075	3/4" x 3/4"	25	6.6	1.5
		30	7.9	1.8
FT - 100	1" x 1"	35	9.2	2.1
		50	13.2	3.0
FT - 125	1 1/4" x 1 1/4"	75	19.8	4.5
FT - 150	1 1/2" x 1 1/2"	110	29.0	6.6
FT - 200	2" x 2"	225	59.4	13.5
FT - 250	2 1/2" x 2 1/2"	350	92.5	21.0
FT - 300	3" x 3"	500	132.0	30.0

Features

Simple and Efficient design.
Single helical gear design.
Low noise.
Wide capacity range.
Easy to maintain.
With relief valve design.
High efficiency.
Optionally available in double helical gear design.
Self priming pump.
Bi-direction positive displacement pumps.

Application

Refineries.
All kind of mineral Oils.
Printing inks.
Dyes and Resins.
Glycerin and Glycol.
Bitumen.
Fuel oil, Diesel oil, Furnace oil.
Power plant.
Steel plant.
Cement plant.
Oil storage installation

Series

FTSS



Rotary Gear Pump
Material of Construction

Part	Material For FTSS
Pump Body	CF8M [SS-316]
Front Cover	CF8M [SS-316]
Back Cover	CF8M [SS-316]
Gland Cover	CF8M [SS-316]
Packing	Teflon Sheet
Sealing	"GFO" Pack Teflon / Mech. Seal / Viton oil seal
Bush Bearings	Teflon Coated "DU"
Mounting Bracket	C.I.Gr.-20 IS 210
Dom Nut	AISI [SS-316]
Rotor/Stator Shaft	AISI [SS-316]
R.H. & L.H. Gear	AISI [SS-316]
Key For Coupling	SS-304

Technical
Specification

Model	Suction & Delivery Size	Capacity at 1440 RPM		
		LPM	US GPM	M ³ /hr
FTSS - 025	1/4" x 1/4"	8	2.1	0.5
FTSS - 040	3/8" x 3/8"	15	3.9	0.9
FTSS - 050	1/2" x 1/2"	25	6.6	1.5
FTSS - 075	3/4" x 3/4"	30	7.9	1.8
FTSS - 100	1" x 1"	50	13.2	3.0
FTSS - 125	1 1/4" x 1 1/4"	100	26.4	6.0
FTSS - 150	1 1/2" x 1 1/2"	125	33.0	7.5
FTSS - 200	2" x 2"	200	52.8	12.0
FTSS - 250	2 1/2" x 2 1/2"	300	79.2	18.0
FTSS - 300	3" x 3"	500	132.0	30.0

Features

Construction is in three piece so easily cleanable and maintainable.
PTFE coated DU bush for smooth running and dry bearing condition.
Self priming pump
Single helical gear design.
Optionally available in double helical gear design.
Bi-direction positive displacement pump.
Corrosion prevent pump

Application

Food product like Ghee, Butter, Pulp, Vegetable sauce.
Pharmaceutical industries.
Cosmetic industries.
Dyes and Resins.
Chemical industries for corrosive viscose chemical.
Dyeing and Printing house.
Special chemical and Acid industries.



Series

FTRN | FTRB | FTRX



Technical Specification

Model FTRN FTRB FTRX	Suction & Delivery Size	Capacity at 1440 RPM		
		LPM	US GPM	M ³ /hr
050 - S	1/2" x 1/2"	10	2.6	0.6
050 - M	1/2" x 1/2"	15	3.9	0.9
050 - L	1/2" x 1/2"	25	6.6	1.5
100 - S	1" x 1"	30	7.9	1.8
100 - M	1" x 1"	50	13.2	3.6
100 - L	1" x 1"	60	15.8	3.6
150 - S	1 1/2" x 1 1/2"	80	21.1	4.8
150 - M	1 1/2" x 1 1/2"	100	26.4	6.0
150 - L	1 1/2" x 1 1/2"	125	33.0	7.5
200 - S	2" x 2"	150	39.6	9.0
200 - M	2" x 2"	165	43.5	9.9
200 - L	2" x 2"	200	52.8	12.0
250 - S	2 1/2" x 2 1/2"	250	66.0	15.0
250 - M	2 1/2" x 2 1/2"	300	79.2	18.0
250 - L	2 1/2" x 2 1/2"	330	87.1	19.8
300 - S	3" x 3"	415	109.6	24.9
300 - M	3" x 3"	450	118.8	27.0
300 - L	3" x 3"	500	132.0	30.0
400 - S	4" x 4"	600	158.5	36.0
400 - M	4" x 4"	665	175.6	39.9
400 - L	4" x 4"	830	219.2	49.8
500 - S	5" x 5"	1000	264.1	60.0
500 - M	5" x 5"	1250	330.2	75.0
500 - L	5" x 5"	1500	396.2	90.0
600 - S	6" x 6"	1650	435.8	99.0
600 - M	6" x 6"	1825	482.1	132.0
600 - L	6" x 6"	2083	549.4	124.8
600A - S	6" x 6"	2500	660.4	150.0
600A - M	6" x 6"	2915	770.0	174.9
600A - L	6" x 6"	3330	879.6	199.8
800 - S	8" x 8"	3750	990.6	225.0
800 - M	8" x 8"	4165	1100.2	250.0
800 - L	8" x 8"	4583	1210.7	275.0

Rotary Gear Pump Material of Construction

Part	Material For FTRN / FTRX	Material For FTRB
Pump Body	CI/CS	CI/CS
Front Cover	CI/CS	CI/CS
Back Cover	CI/CS	CI/CS
Gland Cover	CI/CS	CI/CS
Rotor & Stator Shaft	EN-19	EN-19
Gear	EN-24/EN-353	EN-24/EN-353
Bush/Needle Bearing	INA/IKO [Japan]	Non-Ferrous
Wear Plate	Non-Ferrous	Non-Ferrous
Lifting Hook	Mild Steel	Mild Steel
R.V. Housing	Mild Steel	Mild Steel
R.V. Piston	EN-8	EN-8
R.V. Spring	Spring Steel	Spring Steel
R.V. AD. Screw	EN-8	EN-8
Sealing	'GFO' Teflone/Mechanical Seal	"GFO" Teflone/Mechanical Seal
Key	EN-8	EN-8
Dowel Pin	EN-31	EN-31
Hex - Bolt	Mild Steel	Mild Steel

Features

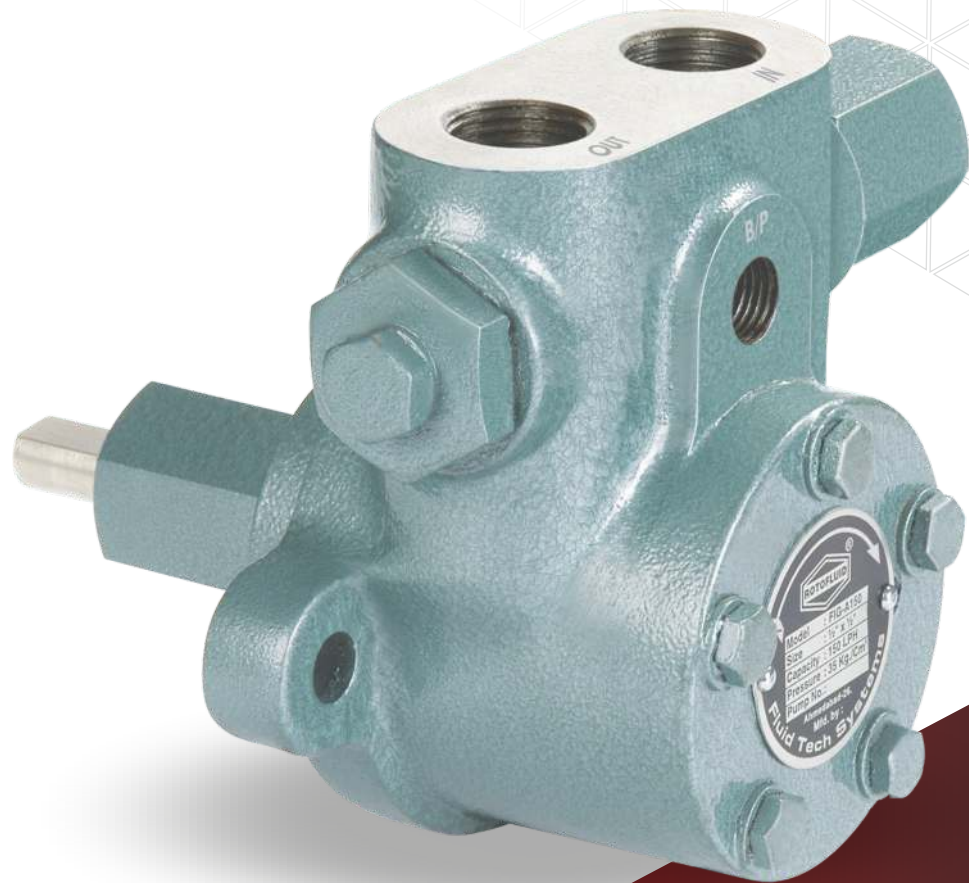
Heavy duty gear pump design for continuous application.
Herringbone rotor design eliminate side thrust.
Modified tooth profile enhance tooth life.
Floating gear design ensures uniform load distribution.
Optionally steam jacket available.
Double helical gear design prevent axial load.
Low leakage path by design improve volumetric efficiency.
Shorter bearing span reduces bending effect.

Application

Power plant.
Steel plant.
Cement plant.
Bitumen plant.
Petroleum industries.
Refineries.
Pumping station.
All kind of liquid loading and unloading.

Series

FIG



Technical Specification

Model	Capacity in LPH at 1440 RPM	Suction & Delivery Size	Motor HP	
			3 kg/cm ²	30 kg/cm ²
FIG - S60	60	3/8" x 3/8"	0.25	1.0
FIG - S90	90	3/8" x 3/8"	0.25	1.0
FIG - S120	120	3/8" x 3/8"	0.25	1.0
FIG - A150	150	1/2" x 1/2"	0.25	1.5
FIG - A300	300	1/2" x 1/2"	0.25	1.5
FIG - A450	450	1/2" x 1/2"	0.25	2.0
FIG - A600	600	1/2" x 1/2"	0.25	2.0
FIG - B1000	1000	3/4" x 3/4"	0.75	3.0
FIG - B1500	1500	3/4" x 3/4"	0.75	3.0
FIG - B2000	2000	3/4" x 3/4"	0.75	5.0
FIG - B2500	2500	3/4" x 3/4"	0.75	5.0
FIG - C3000	3000	1" x 1"	1.5	7.5
FIG - C4500	4500	1" x 1"	1.5	10.0
FIG - C6000	6000	1" x 1"	1.5	15.0

Rotary Gear Pump
Material of Construction

Part	Material For FIG
Body	IIS.210FG 220 C.I. Grade
Eccentric	IIS.210FG 220 C.I. Grade
Idler Gear	SAE-8620
Rotor shaft	SAE-8620
Sealing	Mechanical seal
Piston	EN-8
Adjusting Screw	EN-8
Spring	Spring Steel

Features

Higher suction lift.
Self priming pump and Capacity to create vacuum up to 600/650 mm hg
Flange and Foot mounting option.
Optionally available in investment casting.
Zero leakage mechanical seal.
Maximum temperature up to 200° c.
Continues duty pump.
Internal lubrication systems.
Available with or without built-in pressure relief valve and external by pass.
Pressure regulator, progressively adjustable.

Application

Highly used in fuel injection Burners, Boilers, Furnaces.
Booster application in diesel locomotive.
Force feed lubrication.
Eventually with separate pressure regulating valves.
For gas oil, medium, heavy and very heavy oil.
Filter pumping.
Pumps for PHF units.
Pump for hydraulic oil.
Pump suitable for LDO, FO, HSD and LSHS.



Series

FTMP



Technical Specification

Model	Capacity in LPH at 1440 RPM	Suction & Delivery Size	Motor Rating Required [HP]
FTMP - 0.5	0.5	1/8" x 1/8"	0.25
FTMP - 1	1	1/4" x 1/4"	0.25
FTMP - 3	3	1/4" x 1/4"	0.25
FTMP - 6	6	1/4" x 1/4"	0.5
FTMP - 10	10	3/8" x 3/8"	0.5
FTMP - 16	16	1/2" x 1/2"	1
FTMP - 25	25	1/2" x 1/2"	1.5
FTMP - 40	40	1" x 1"	1.5

Gear Oil Pump

Material of Construction

Part	Material For FTMP
Body	IS.210 FG 220 C.I. Grade
Back Cover	IS.210 FG 220 C.I. Grade
Shaft	EN-19
Gear	Sintered Iron
Bush Bearing	Non Ferrous Sintered Bronze
Sealing	Neoprene oil Seal
Key for coupling	EN-8

Features

Gear Oil Pump Features
 Compact in size.
 smooth running and Low noise.
 Monoblock version is available.
 Maximum suction head is 1 meter at 1500 RPM, keeping pressure line open.

Application

Lubrication of gear boxes.
 Lead stocks.
 Transfer of oil.
 Low pressure hydraulic power packs.
 Rotary oil fillers.
 Automobile and Machine tools.
 Heavy machineries and equipments.



Series
FTHS | FTMB



Gear Oil Pump
Material of Construction

Part	Material For FTMB
Body	IS.210 FG 220 C.I. Grade
Back Cover	IS.210 FG 220 C.I. Grade
Rotor/Stator Shaft	EN-19
R.H. & L.H. Gear	EN-8
R.V. Spring	Spring Steel
Bearing[Bushes]	Non Ferrous Sintered Bronze
Sealing	Neoprene oil Seal
R.V. Cap	Aluminum
Key for coupling	EN-8

Technical
Specification

Model	Suction & Delivery Size	Capacity at 1440 RPM		
		LPM	US GPM	M ³ /hr
FTHS FTMB 050	1/2" x 1/2"	15	4.0	0.9
FTHS FTMB 075	3/4" x 3/4"	25	6.6	1.5
FTHS FTMB 100	1" x 1"	50	13.2	3.0

Features

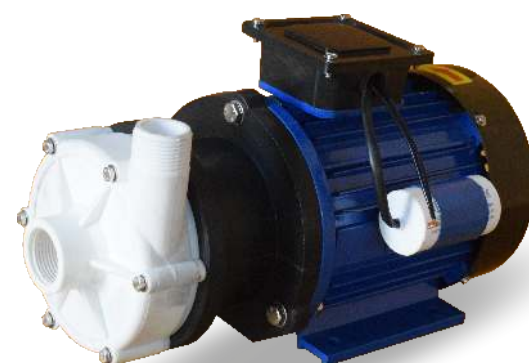
High reliable.
Easily portable.
Base plate, Coupling, Coupling Guard is not required.
Compact size and Space saving model.
In built relief valve available.
Self priming pump.
Bi-direction positive displacement pump.
Ensure perfect alignments.

Application

Machine tools application.
Pre-Lubrication of engines.
Transfer of oil.
Lubrication of gear boxes.

Series

PMD Seal-less Magnetic Pumps



Magnetic Drive pumps in PP & PVDF construction

These pumps are 100% Leak Proof and ideally suitable for handling corrosive chemicals, toxic and fuming liquids, acids, electroplating chemicals, dyes, solvents, petrol, kerosene, pharmaceutical and food syrups etc.

These pumps are 100% Leak Proof Magnetic Drive pumps. There is no shaft seal used and the impeller is provided the rotation with the help of Magnetic drive. High Power permanent rare earth Magnets are used in magnetic drive arrangement which gives high mechanical efficiency with zero slippage.

All PMD Magnetic Drive Pumps are available in Monoblock type only with Std TEFC motor and Flame Proof motors

Material of Construction: GFRPP (Reinforced Polypropylene), PVDF (polyvinylidene fluoride)

Operating Temp: PP upto 70 deg C. PVDF upto 100 deg C

Technical Specification

Model	Suction & Delivery Size	HP	VOLT	RPM	Max. Capacity LPM	Max. Head Mtrs
PMD 15	14 x 14 mm Nozzle	0.12	230	2900	15	2.5
PMD 30	18 x 18 mm Nozzle	0.16	230	2900	30	4
PMD 50	20 x 20 mm Nozzle	0.25	230/415	2900	50	5
PMD 85	26 x 26 mm Nozzle	0.5	230/415	2900	85	9
PMD 125	26 x 26 mm Nozzle	0.75	230/415	2900	125	12
PMD 170	1" x 1" BSP / Flanged	1	230/415	2900	170	14
PMD 300	40 x 40 BSP / Flanged	1.5	415	2900	280	20
PMD 400	40 x 40 BSP / Flanged	2	415	2900	375	21
PMD 500	50 x 40 BSP / Flanged	3	415	2900	475	30
PMD 650	50 x 40 BSP / Flanged	5	415	2900	600	32

Features & Application

100% Leak Proof Pumps
No Shaft Seal to maintain, replace
High Efficiency due to permanent magnet power coupling
Simple design, easy to operate & maintain
Very useful for handling highly corrosive chemicals, plating chemicals, toxic & fuming liquids

Range

Capacity from 10 LPM upto 570 LPM
Head upto 32 mtrs.
Moc in PP, SS-316 & PVDF

Series

CFP



SS 316 Centrifugal Chemical transfer Pumps

Complete SS 316 Horizontal Centrifugal pumps with High head & High discharge design. Front openable Suction casing for easy operation and maintenance. Hydraulically balanced impeller for better efficiency and lower power consumption. Fabricated from SS 316 rolled steel sheet give better surface finish and low liquid friction. Sealing by Mechanical seal of either Carbon, Ceramic, Silicon or Pure Teflon gland packing.

Ideally suitable for mild chemical transfer from underground to overhead tank, unloading from tanker, washing and cleaning of parts, Food and dairy products, beverages etc.

All CFP series pumps are available in Bare Shaft and Monoblock design with std. TEFC motors OR Flameproof motors.

Material of Construction : SS 316

Operating Temp : Std. 110 deg.

Technical Specification

Model	HP	Size	Head in Meters Discharge in LPM at 2900 RPM													
			4	6	8	10	12	14	16	18	20	22	24	26	28	30
CFP - 1	0.25	12X12	25	22	18	14										
CFP - 2	0.5	25X25		120	112	108	80	70								
CFP - 2A	0.5	40X40			225	175	60	25								
CFP - 3	1	25X25				160	140	130	122	100	95	80	70	30		
CFP - 3A	1	40X40			270	250	220	190	150							
CFP - 3B	1	50X50			400	375	340	280								
CFP - 4A	1.5	40X40								175	160	150	130	90		
CFP - 4B	1.5	50X40					280	250	220	180	150	80				
CFP - 5A	2	50X40									230	200	186	130	90	
CFP - 5B	2	50X50					325	290	245	180	120				50	
CFP - 5C	2	80X80			550	500	470	350								

Model	HP	Size	Head in Meters Discharge in LPM at 2900 RPM													
			6	8	12	16	20	24	28	32	36	40	45	48	54	56
CFP - 6A	3	50X40					230	200	180		150	75	25			
CFP - 6B	3	65X50			375	320	265	225								
CFP - 7A	5	50X40								260	230	190	145	90	25	
CFP - 7B	5	65X50				650	580	520	300	210	150					
CFP - 7C	5	80X80			1050	900	756	480								
CFP - 7D	5	100X100	1296	1120	1080	650										
CFP - 7E	5	80X65				750	650	556	345							
CFP - 8A	7.5	50X40								290	280	250	225	190	120	60
CFP - 8B	7.5	65X50					785	700	640	575	470					
CFP - 8C	7.5	100X80			1250	1150	950	800								

Model	HP	Size	Head in Meters Discharge in LPM													
			10	12	16	20	24	28	32	36	40	45	48	54	57	60
CFP - 8D	7.5	100X100		1458	1296	1080	750									
CFP - 8E	7.5	80X65			1025	918	810	700								
CFP - 9A	10	50X40					500	480	470	450	430		340	260		
CFP - 9B	10	65X50							700	650	590		290			
CFP - 9C	10	80X65	1270	1242	1180	1080	1026	918	810	700	486					
CFP - 9D	10	100X100		1700	1560	1450	1240	972								
CFP - 10A	12.5	80X65				1026	972	950	918	810	756					
CFP - 10B	12.5	100X100			1780	1725	1566	1242	648							
CFP - 11A	15	65X50		52	56	60	64	68	72	76	Head in Meters					
			432	378	365	350	330	270	216	Discharge in LPM						

Head in Meters
Discharge in LPM

Model	HP	Size	Head in Meters Discharge in LPM												
			20	24	28	32	36	40	44	48	52	54			
CFP - 11B	15	80X65				1026	972	918	864	756	648	540			
CFP - 11C	15	100X100	1890	1782	1620	1350	910								
CFP - 12A	20	100X80	1782	1700	1620	1510	1458	1350	1188	1026					

The data provided above are calculated for water as test media.
The actual performance of pump may vary due to liquid pumped, pipe and site conditions.
Also due to constant improvement and changes in design the performance is subject to change.

Features & Application

Range

simple & Front open design
All contact parts of SS-316 material
Best in class efficiency with high head and high capacity
Available in mono block & Bare type
Sealing by Mechanical Seal of Carbon, Ceramic, SC,
TC, & Pure Teflon Packing

Capacity from 20 LPM to 2000 LPM
Head upto 60 mtrs.

Series
PCX-M



Technical
Specification



Model	Size (S X D)	HP	All Pumps at 2900 RPM									
PCX 100 M	25 x 25	1	4	6	8	10	11	12	13	Head (Mtrs)		
			14	12	9	6	5	3	0	Capacity (M3/hr)		
PCX 120 M	40 x 32	2	5	8	10	12	15	16	18			
			29	26	24	20	12	8	2			
PCX 130 M	50 x 40	3	5	8	12	15	18	20	23			
			32	30	24	18	12	8	0			
PCX 160 M	75 x 40	5	10	14	18	22	25	27	31			
			35	31	27	20	15	10				

M PP pumps with
Mechanical Seal in
monoblock construction

Series PCX - MPP pumps with Mechanical Seal in monoblock construction

Monoblock type PP pumps which are small, economical and easy to use and maintain. Ideal to for transfer of corrosive liquids, pharmaceutical products, food and dairy products, chemical transfer and filtration etc. These pumps are specially designed for economic application with high capacity and discharge . Std. pumps are available with GFT Mechanical Seal.

All PCX - M series pumps are available in Monoblock design with std. TEFC motors OR Flameproof motors.

Material of Construction : Poly Propylene

Operating Temp : Max. upto 70 deg C



Spitmaan Style

11
Steam



Description:

These Jointings are consistently uniform, solid run constructed resilient quality product with ahightly dependable performance. Its adaptability to many sealing requirements makes this product the most Economical sheet packing choice of Plant Engineers and maintenance men

Specifications:

IS 2712: 1998 Gr.-W/3, IS 2712: 1971 Gr. C & IS 2712: 1965 Gr.-C.

Suitable Industries/Properties:

General purpose applications in all industries with less severe working conditions of temperature and Pressure (Low service conditions).

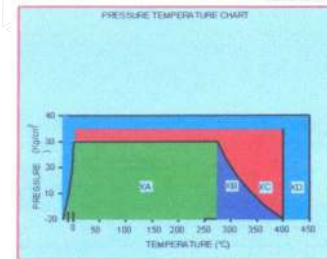
Suitable Media:

Water, LP Steam, Gases, Dilute Acids & Alkalies.

Identity Colour:

Red / Graphited as Standard.

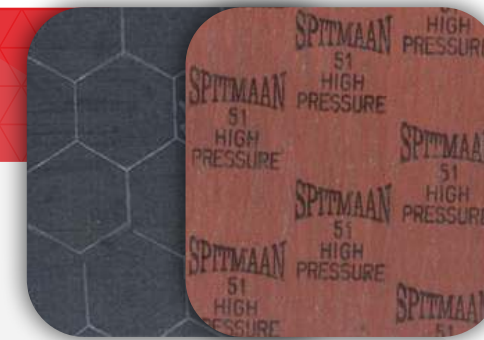
Optional Steel Wire Mesh Insert available with Graphite Finish.



Temperature Rating	Non-Metallic	Metallic
Recommended Maximum Temperature	360 °C	400 °C
Recommended Maximum Pressure	30 bar	35 bar

Spitmaan Style

51
Brown



Description:

Manufactured from selected Asbestos Fibres and bonded with premium Gr. Binder compound. This product has a wide range of industrial applications.

Specifications:

IS 2712: 1998 Gr.- W/ 2 (R 2015), IS 2712: 1971 Gr.- B/ S, IS 2712: 1979 Gr.- W/ 2, IS 6210: 1971, DGS & DS/ MISC/ 81-c Item 12(b) Commercial Quality, BS 1832: 1991.

Properties:

General purpose Gasketing material (Medium Service conditions).

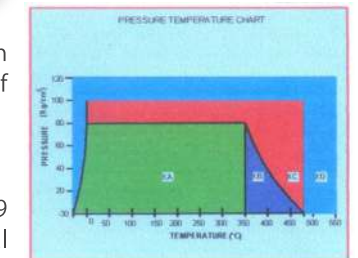
Suitable Media:

Steam, Neutral non- flammable gases, Alkaline solutions, Fats, Lyes, Oils, Alcohol, Motor Fuels and such other Engineering Services.

Identity Colour:

Grey & Brown

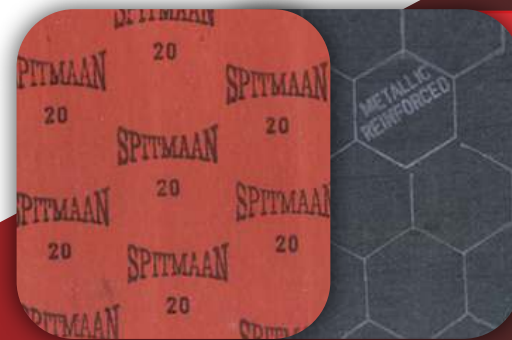
Optional Steel Wire Mesh Insert available with Graphite Finish.



Temperature Rating	Non-Metallic	Metallic
Recommended Maximum Temperature	440 °C	480 °C
Recommended Maximum Pressure	80 bar	100 bar

Spitmaan Style

20
Steam



Description:

These Jointings are consistently uniform, solid run constructed resilient quality product with ahightly dependable performance. Its adaptability to many sealing requirements makes this product the most Economical sheet packing choice of Plant Engineers and maintenance men.

Specifications:

IS 2712: 1998 Gr.-W/3, IS 2712: 1971 Gr. C & IS 2712: 1965 Gr.-C

Suitable Industries/Properties:

General purpose applications in all industries with less severe working conditions of temperature and Pressure (Low service conditions).

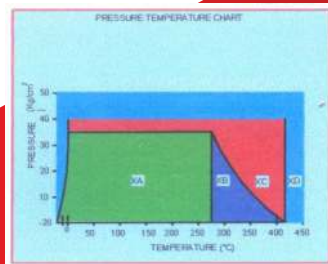
Suitable Media:

Water, LP Steam, Gases, Dilute Acids & Alkalies.

Identity Colour:

Red / Graphited as Standard.

Optional Steel Wire Mesh Insert available with Graphite Finish.



Temperature Rating	Non-Metallic	Metallic
Recommended Maximum Temperature	440 °C	480 °C
Recommended Maximum Pressure	80 bar	100 bar



Spitmaan Style

54
Super

Description:

Manufactured from an excellent quality of Chrysotile Asbestos Fiber and raw materials blended intimately with heat resistant rubber & its compounds under a special process to ensure maximum stability to withstand high Pressures and Temperatures.

Specifications:

IS 2712: 1998 Gr.- W/ 1 (R 2015), IS 2712: 1971 Gr.- A/ S, IS 6210: 1971, DGS & D G/ MISC/ 81-c Item 12(a) Special Quality, BS 1832: 1991.

Suitable Industries/Properties:

Popularly used in Marine Engines, Electricity generating Sets etc.

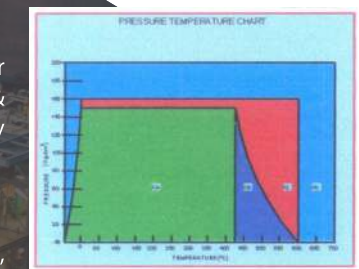
Suitable Media:

Saturated Steam, Oxygen, Petroleum distillates, Oils, Fats, Fuels, Internal Combustion engines, Hydrocarbons, Alcohols, Solvents, Lyes etc.

Identity Colour:

Yellow & Grey/ Graphited as Standard.

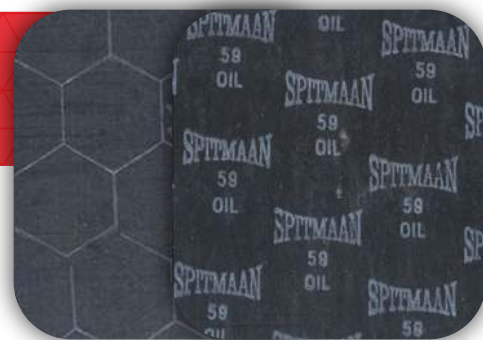
Optional Steel Wire Mesh Insert available with Graphite Finish.



Temperature Rating	Non-Metallic	Metallic
Recommended Maximum Temperature	550 °C	600 °C
Recommended Maximum Pressure	150 bar	160 bar

SPITMAAN®

Spitmaan Style 59 Oil



Description:

A high grade Asbestos Fiber Jointing bonded with a premium compound. This specialized Jointing withstands the most exacting demands of Oil and Petrochemical Plants, Solvents, Refrigerators etc. Use of SPITMAAN Style 59 Oil Gasket Sheet assures safety and economy even in critical working conditions.

Specifications:

IS 2712: 1998 Gr.-O/1 (R 2015), IS 2712: 1979 Gr.-O/1, IS 2712: 1971 Gr.-A/O, IS 6210: 1971, DEFENCE TS RED/71/59, BS 1832: 1991.

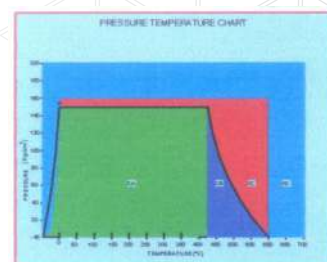
Suitable Industries/Properties:

Used in pipelines, apparatus of the petrochemical fields, petrochemical distillates, oils and petroleum refining industries. It is also recommended in industrial processes with high contents of aromatic substances, sulphurous compounds, chloric hydrocarbons, phenols, refrigerants etc. including steam.

Identity Colour:

Greyish Black/Graphited as Standard.

Optional steel wire mesh insert on request with Graphite finish as Standard.



Temperature Rating	Non-Metallic	Metallic
Recommended Maximum Temperature	550°C	600°C
Recommended Maximum Pressure	150 bar	160 bar

Spitmaan Style S-1001



Description:

Top Grade Compressed Asbestos Gasket Sheet material primarily composed of High Grade Chrysotile Asbestos Fibres and Binders reinforced with Steel wire gauze insertion. Developed to comply extremely demanding sealing applications for stability at high fluctuating temperatures and Pressures.

Specifications:

IS 2712: 1998 Gr. W/1 (R 2015), IS 2712: 1971 Gr. A/S, IS 6210: 1971 & BS 1832: 1991.

Suitable Industries/Properties:

Excellent and Economical choice for Sugar Plants/ Boiler Engineers. (High Service Conditions).

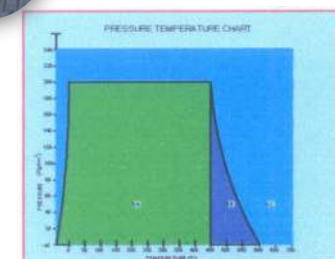
Suitable Media:

Saturated Steam, Oxygen, Petroleum Distillates, Oils, Fats, Fuels, Internal Combustion Engines, Hydrocarbons, Alcohols, Solvents, Lyes Etc.

Identity Colour:

Black Graphited.

Optional Steel Wire Mesh Insert available with Graphite Finish.



Temperature Rating	Non-Metallic	Metallic
Recommended Maximum Temperature	600°C	625°C
Recommended Maximum Pressure	200 bar	225 bar

Spitmaan Style 60 Acid



Description:

This is a specialized Asbestos Fibre Jointing Sheet which is intimately bonded with Acid resisting compound to withstand the corrosive action of Acids and Chemicals.

Specifications:

IS 2712: 1998 Gr.-A/1. (R 2015)

Suitable Industries/Properties:

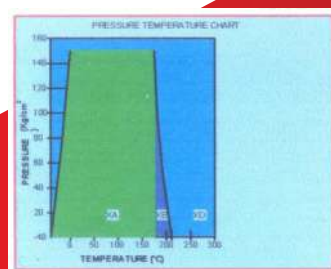
Chemical Industries. (High Service Conditions).

Suitable Media:

Recommended for use against hot & concentrated organic, Inorganic and mineral Acids including Hydrochloric Acid, Sulphuric (Oleum) Acid and Nitric Acids under service conditions of temperatures and pressures commonly encountered in chemical industries.

Identity Colour:

Cream & Light Grey



Temperature Rating	Non-Metallic
Recommended Maximum Temperature	210°C
Recommended Maximum Pressure	150 bar

Notes

☐ Thermic fluid ☐ Process ☐ ETP ☐ Filtration
☐ Transfer ☐ Load - unloading ☐ STP Other ☐ Other

☐ Continuous ☐ Intermittent ☐ Rate

Name of the Liquid Any other Chemicals present.....

Nature of Liquid Presence of any Impurity / Foreign ☐ Yes ☐ No

If yes then its Nature ☐ Abrasive ☐ Non Abrasive ☐ Soft

Specific Gravity Viscosity

Operating Temperature pH Value Concentration (%)

Discharge Capacity Suction Head

Delivery Head Total Differential Head

Wetted Parts New Wetted Parts

☐ Gland Packing ☐ Mechanical Seal ☐ Oil Seal

Motor / Engine KW / HP RPM

Phase Volt Hz

Suc. x Del. Size Coupling Type Flanges Standard

As per above pump selection

Pump Model Pump Series Pump Detail

M.O.C. H.P. R.P.M.

Seal Type Suc. x Del. Size



INDUSTRIAL PUMPS & INSTRUMENT
C O M P A N Y

INDUSTRIAL PUMPS & INSTRUMENT CO.

H.O: 9/240, DR NANJAPPA ROAD,
COIMBATORE-18, 0422

BRANCH:

63, RANGAKONAR STREET, IDEAL COMPLEX,
KATTOOR, COIMBATORE-09

+91 98422 88195

www.industrialpumpsandinstruments.com



Rotary Gear Pumps
SINCE : 1993

