

S U N S H A D E  
ART CURTAIN



VIENTO  
BLINDS



Technical Data

Extraction Formaldehyde Amount

< 30.p.p.m

Color fastness to Light

Up to 4-5-Grade

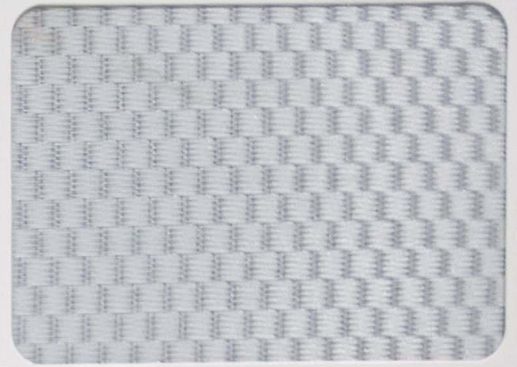
# Zebra Blinds



**VIENTO**  
BLINDS



3379



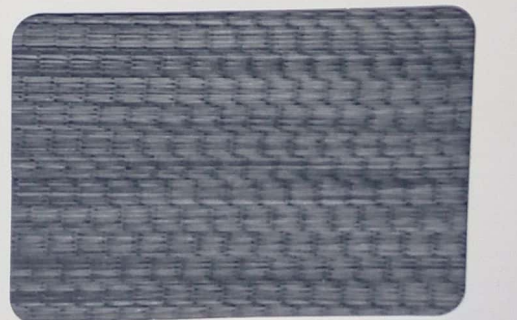
3380



3381



3382

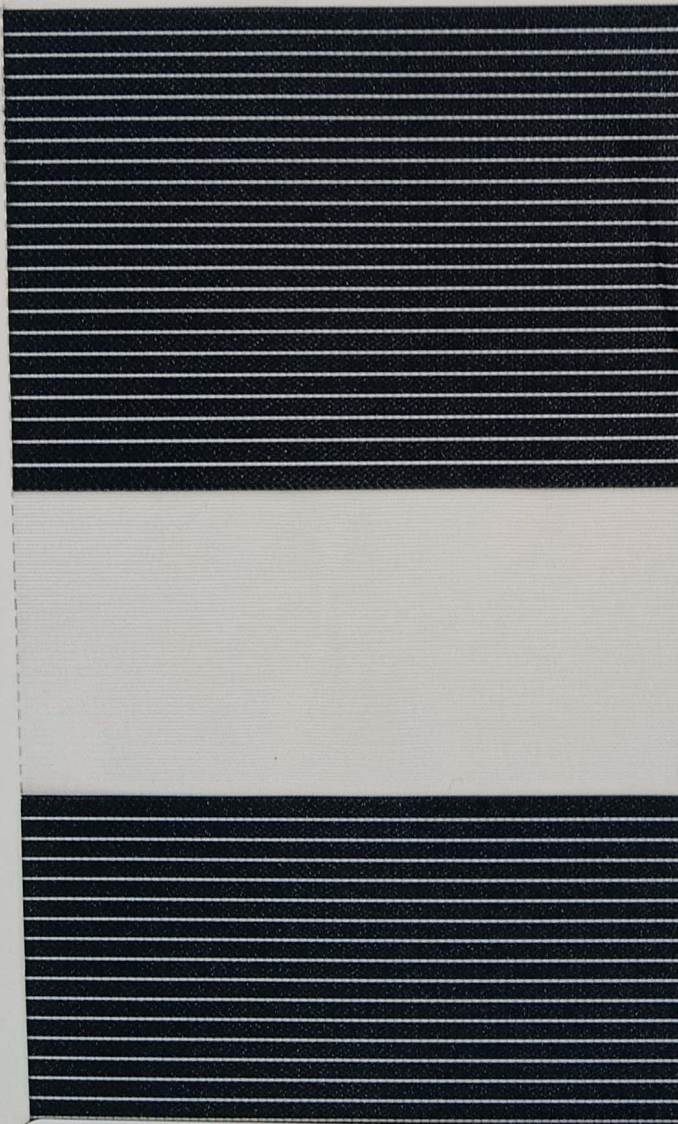


3383

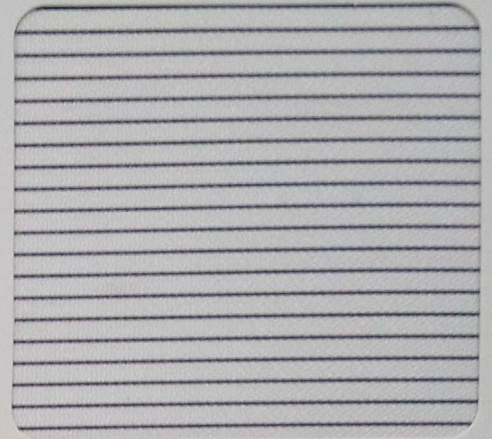


Extinction-Formaldehyde Amount Up to 4-5-Grade  
< 30 p.p.m

# Zebra Blinds



3365



3366



3367



3368

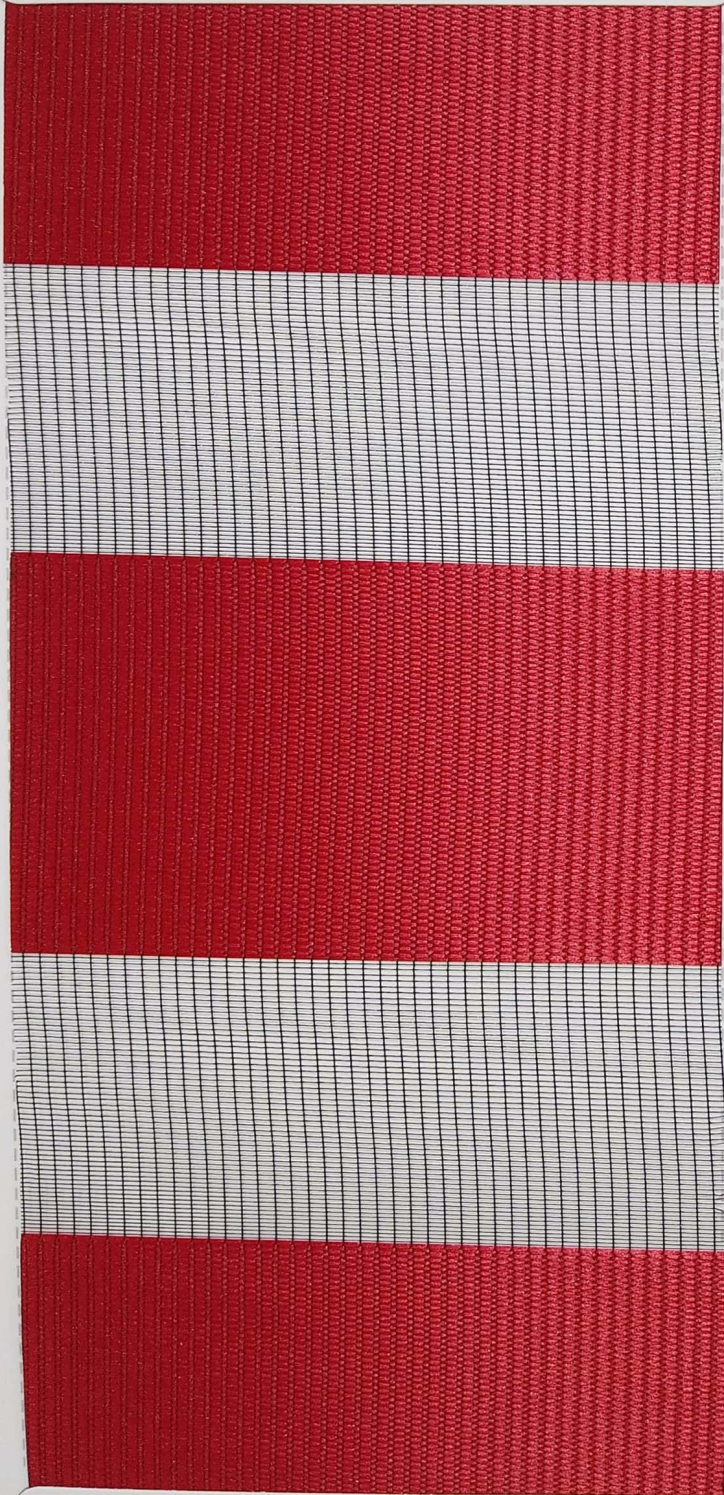


Extraction Formaldehyde Amount  
< 30.p.p.m

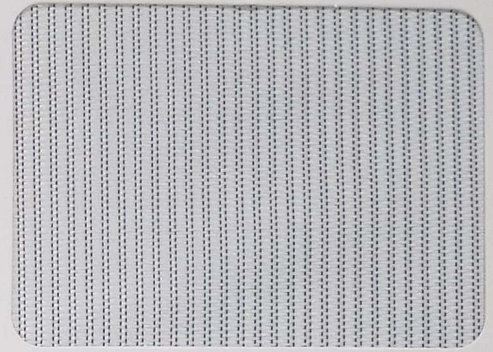
Up to 4-5 Grade

# Zebra Blinds

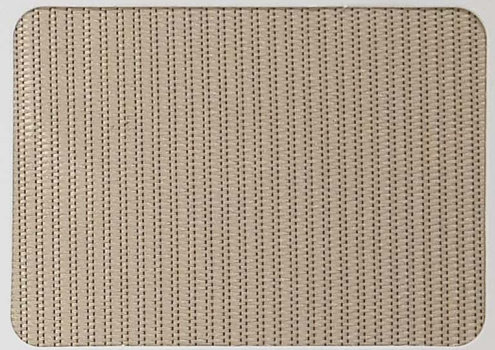
  
**VIENTO**  
BLINDS



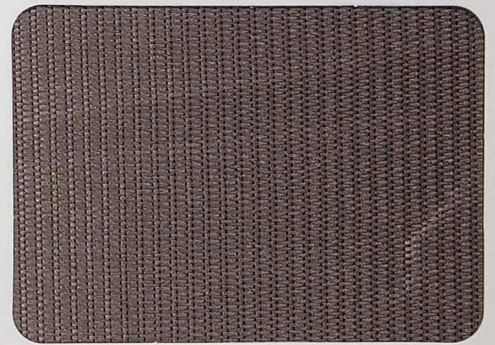
3369



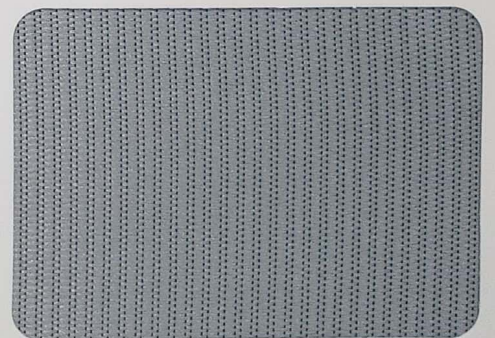
3370



3371



3372



3373



Technical Data  
Extraction Formaldehyde Amount  
<30.p.p.m

Color fastness to light  
up to 4-5-Grade

# Zebra Blinds

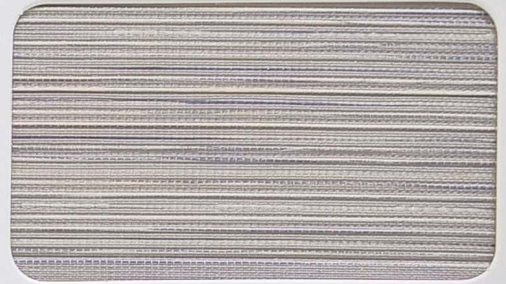
  
**VIENTO**  
BLINDS



3329



3325



3326



3327



3328



3330



Technical Data

Extraction Formaldehyde Amount

<30 p.p.m

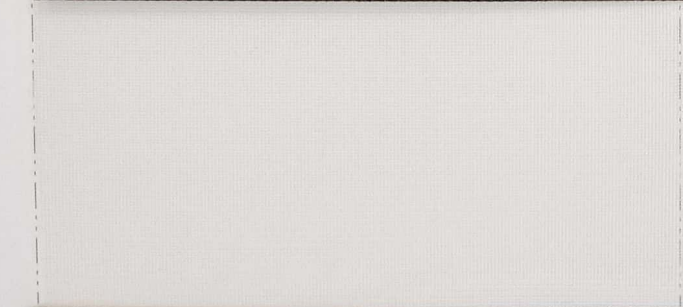
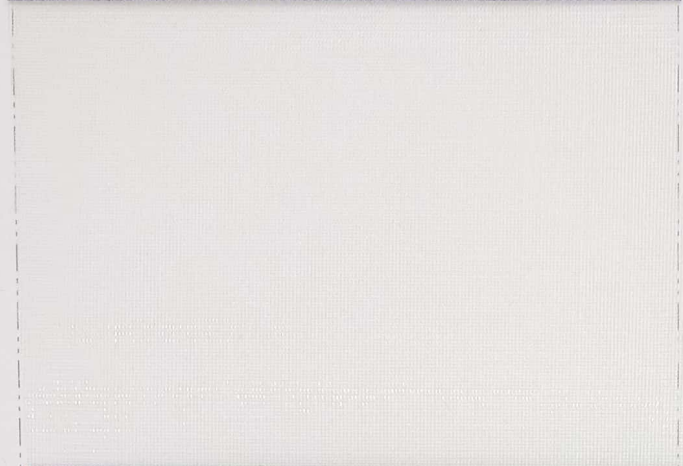
Color fastness to light

up to 4-5-Grade

# Zebra Blinds



## VIENTO BLINDS



3323



3321



3322



3324



Extraction Formaldehyde Amount up to 4-5-Grade  
<30 p.p.m

# Zebra Blinds



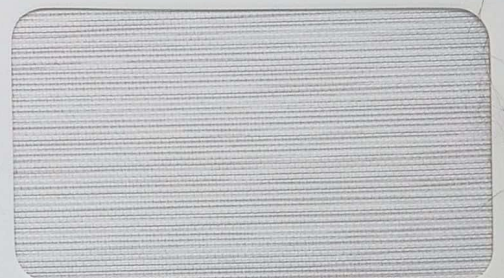
3331



3332



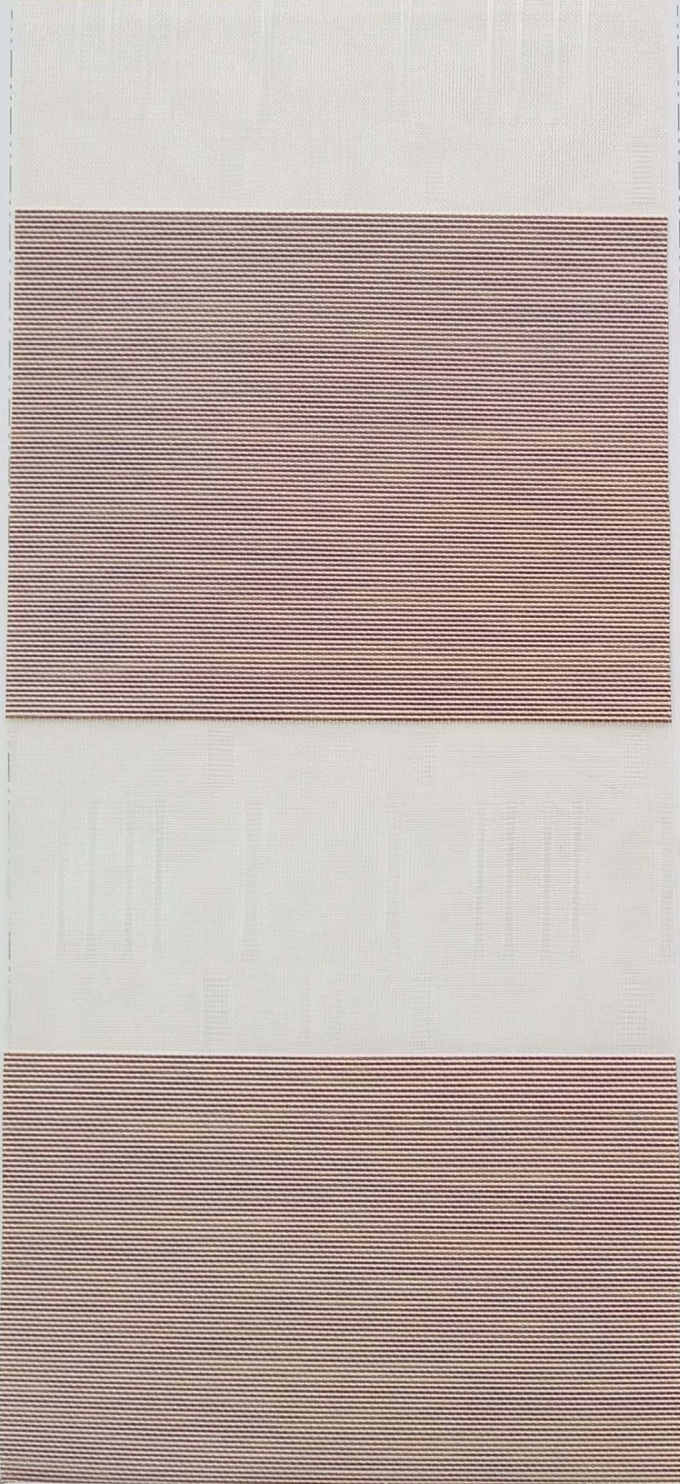
3334



3335



3336



3333



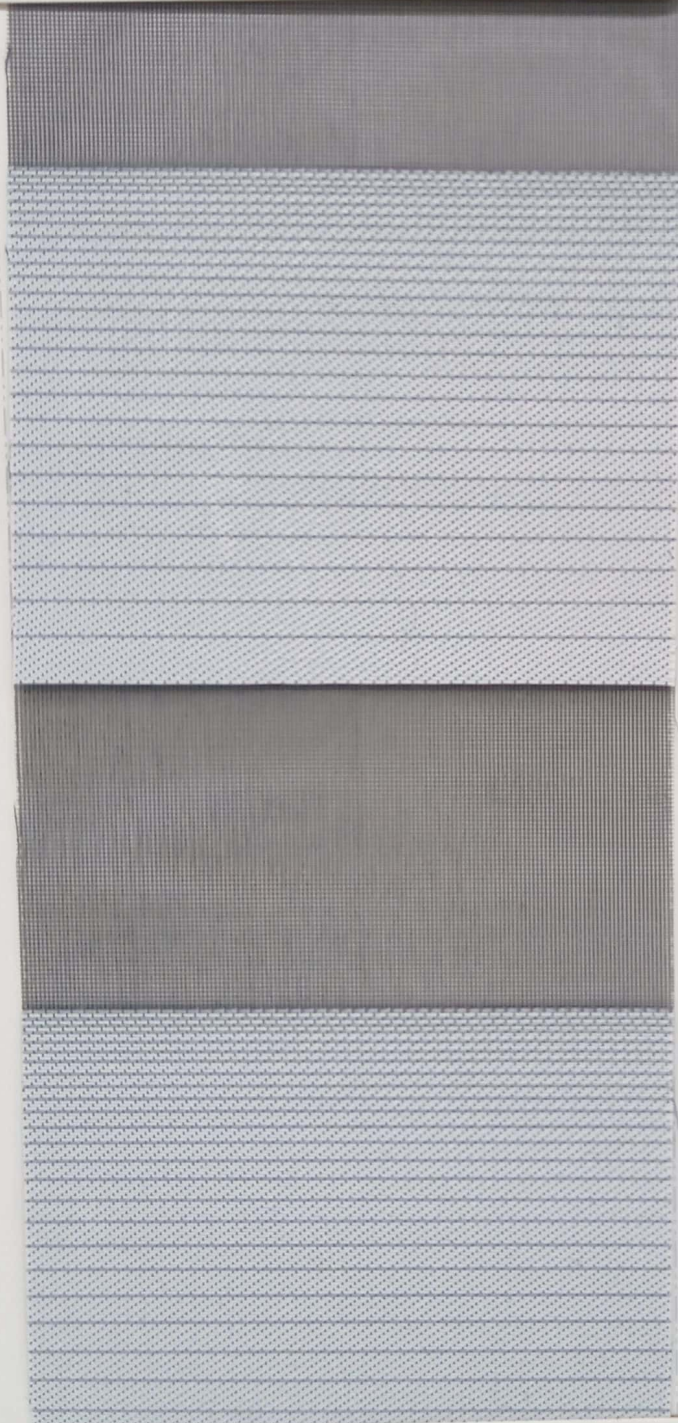
Technical Data  
 Extrication Formaldehyde Amount  
 <30 p.p.m

Color fastness to light  
 up to 4-5-Grade

# Zebra Blinds



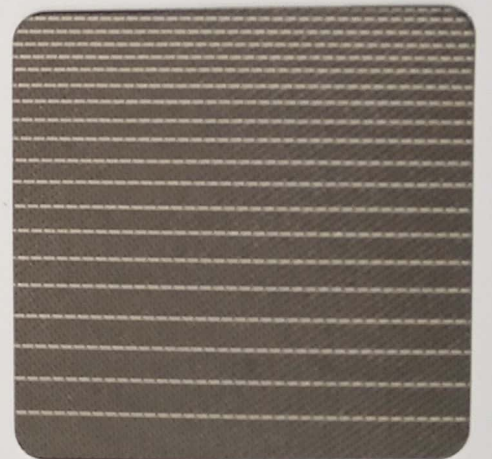
VIENTO  
 BLINDS



3301



3302



3303



3304



Technical Data  
Extraction-Formaldehyde Amount  
<30.p.p.m

Color fastness to light  
up to 4-5-Grade

# Zebra Blinds

®  
**VIENTO**  
BLINDS



3337



3338



3339



3340



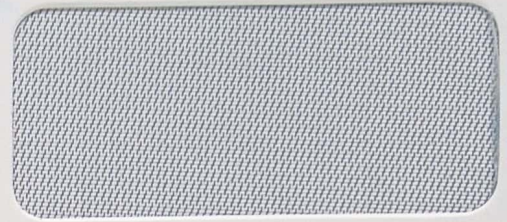
Technical Data  
 Extrication Formaldehyde Amount  
 <30 p.p.m

Color fastness to light  
 up to 4-5-Grade

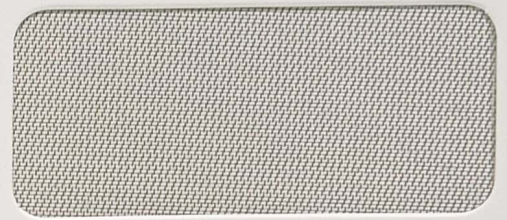
# Zebra Blinds



VIENTO  
 BLINDS



3314



3315



3316



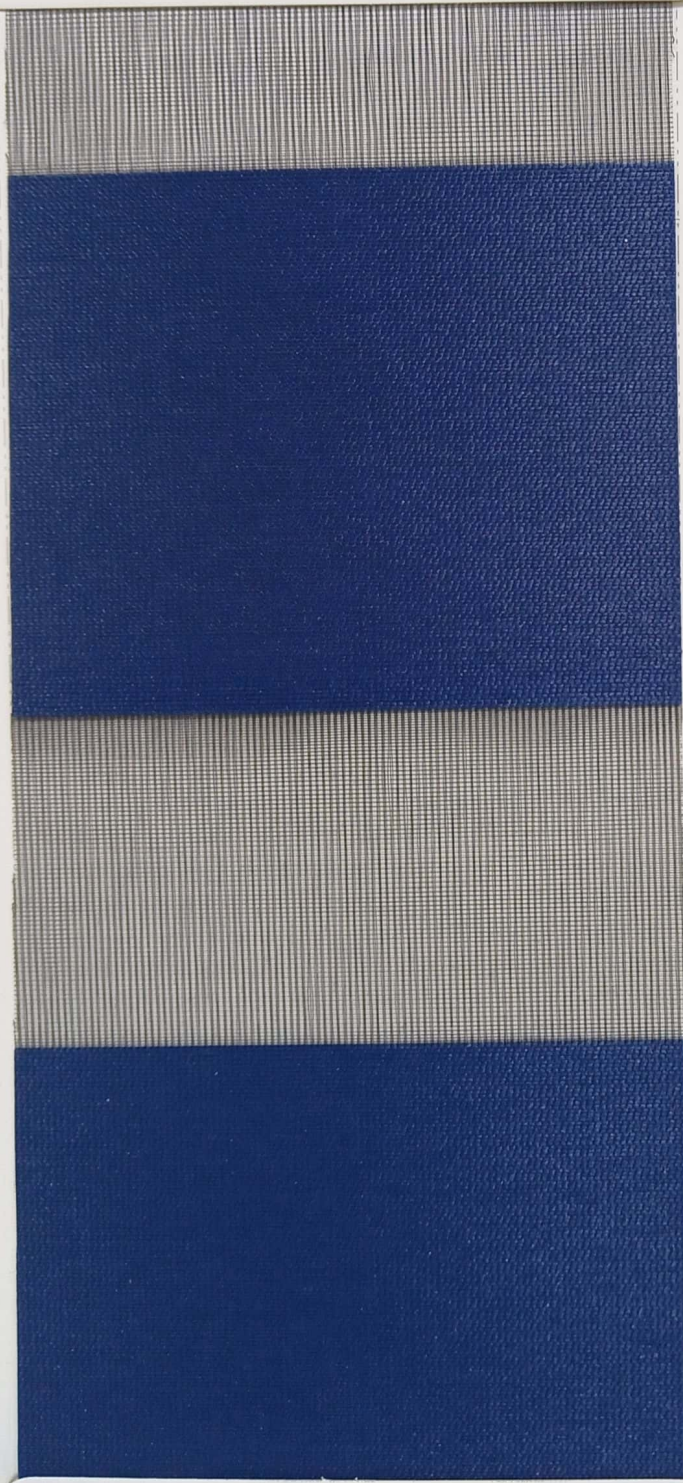
3318



3319



3320



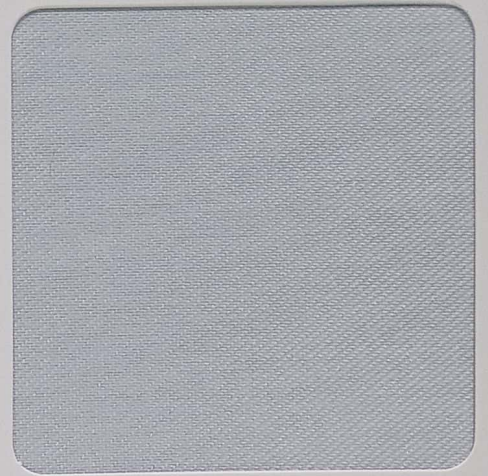
3317



Technical Data  
Extraction Formaldehyde Amount  
<30.p.p.m

Color fastness to light  
up to 4-5-Grade

# Zebra Blinds



3401



3403



3404



Technical Data

Extrication Formaldehyde Amount

<30.p.p.m

Color fastness to light

up to 4-5-Grade

# Zebra Blinds



VIENTO  
BLINDS



3408



3409



3410



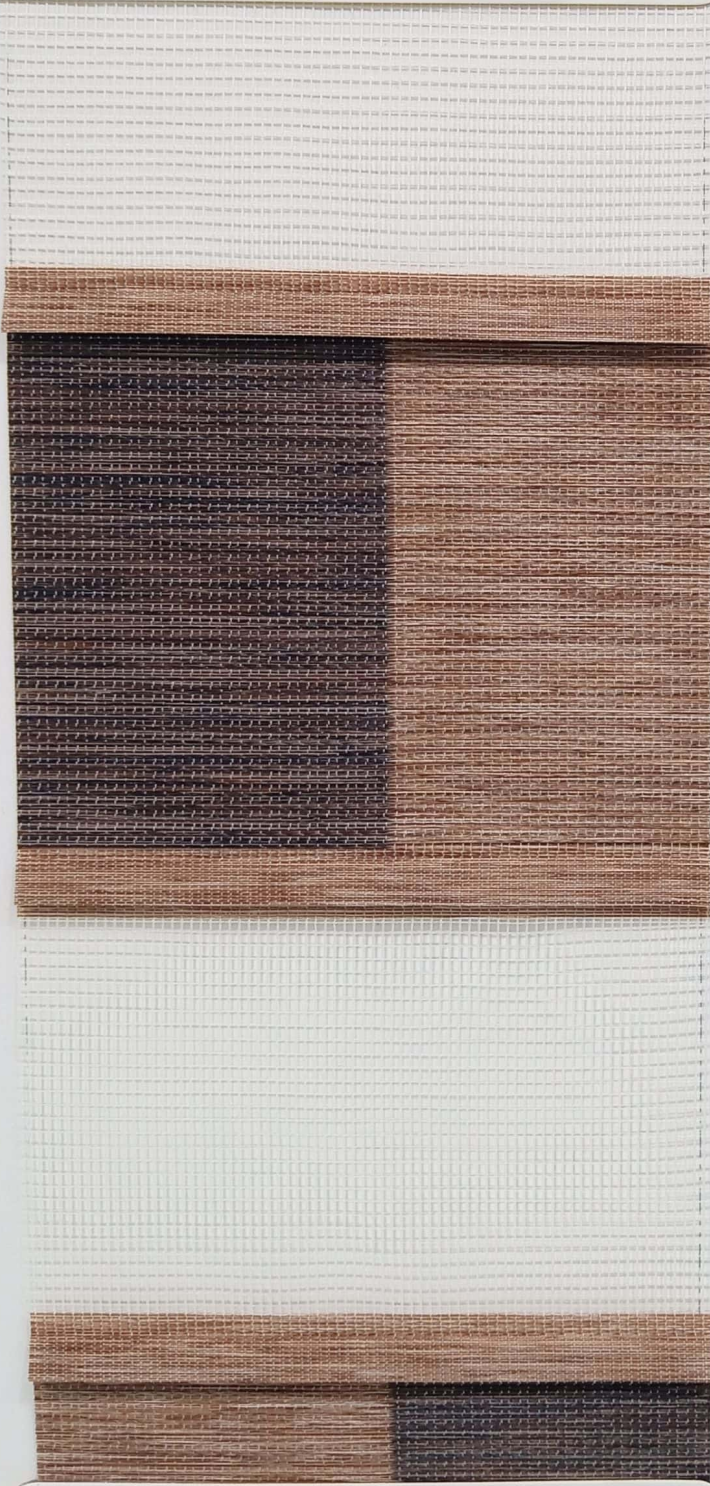
3411



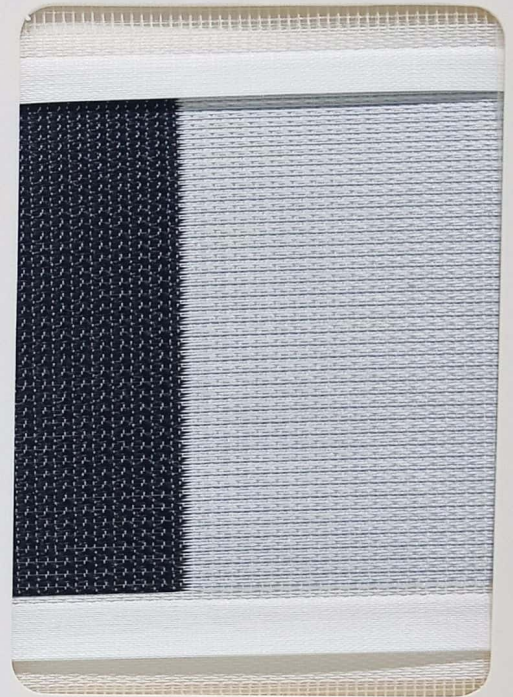
Technical Data  
 Extrication Formaldehyde Amount  
 <30.p.p.m

Color fastness to light  
 up to 4-5-Grade

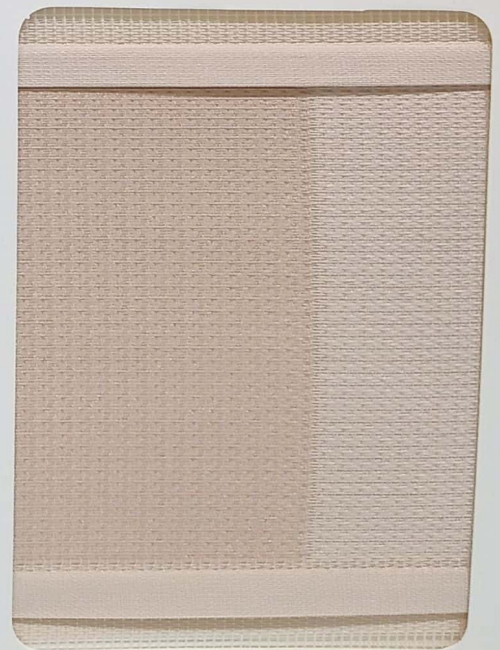
# Zebra Blinds



3343



3341



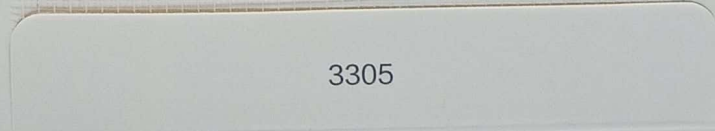
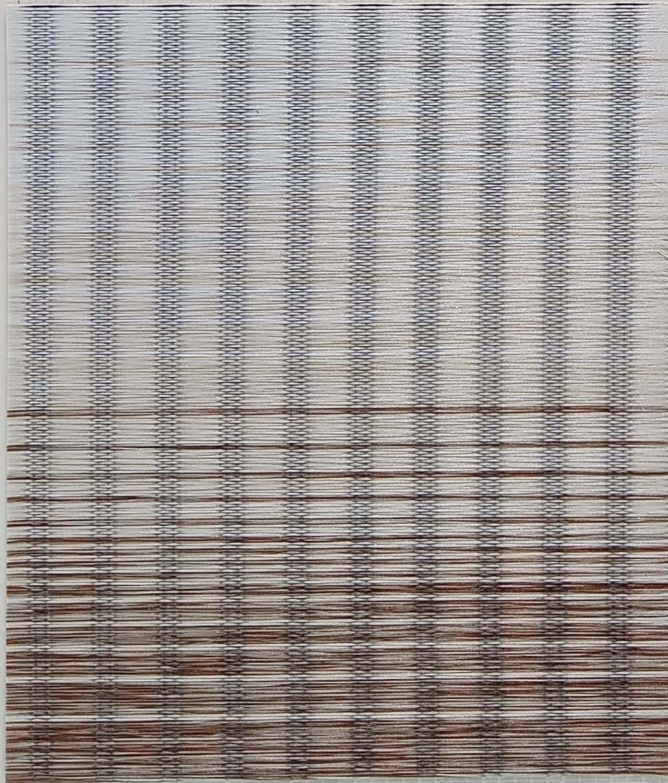
3342



Technical Data  
Extraction Formaldehyde Amount  
<30.p.p.m

Color fastness to light  
up to 4-5-Grade

# Zebra Blinds



3305



3306



3307



3308



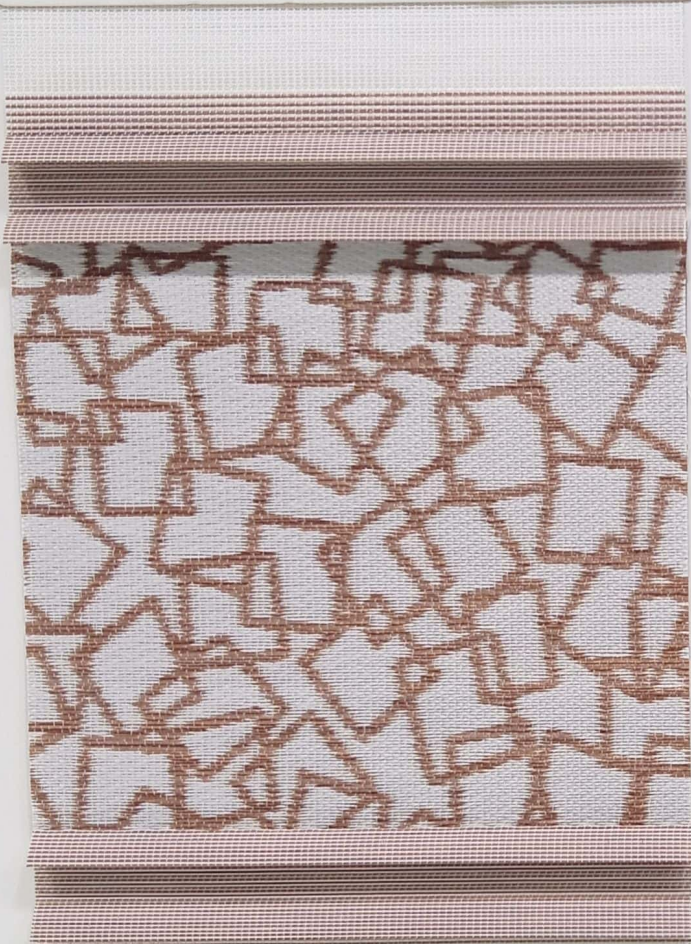
Technical Data  
 Extrication Formaldehyde Amount  
 <30 p.p.m

Color fastness to light  
 up to 4-5-Grade

# Zebra Blinds



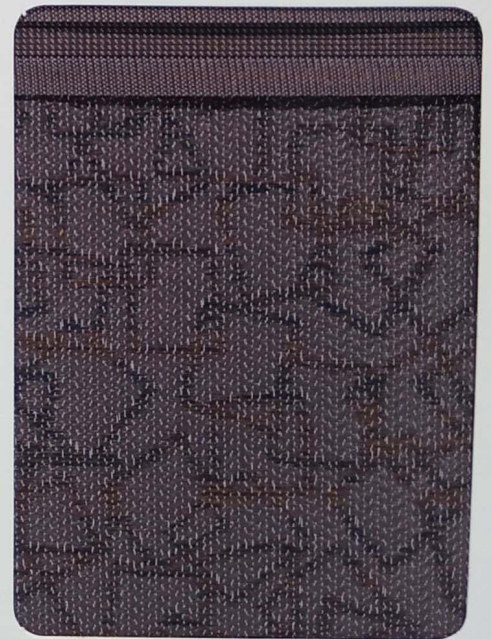
VIENTO  
 BLINDS



3345



3344



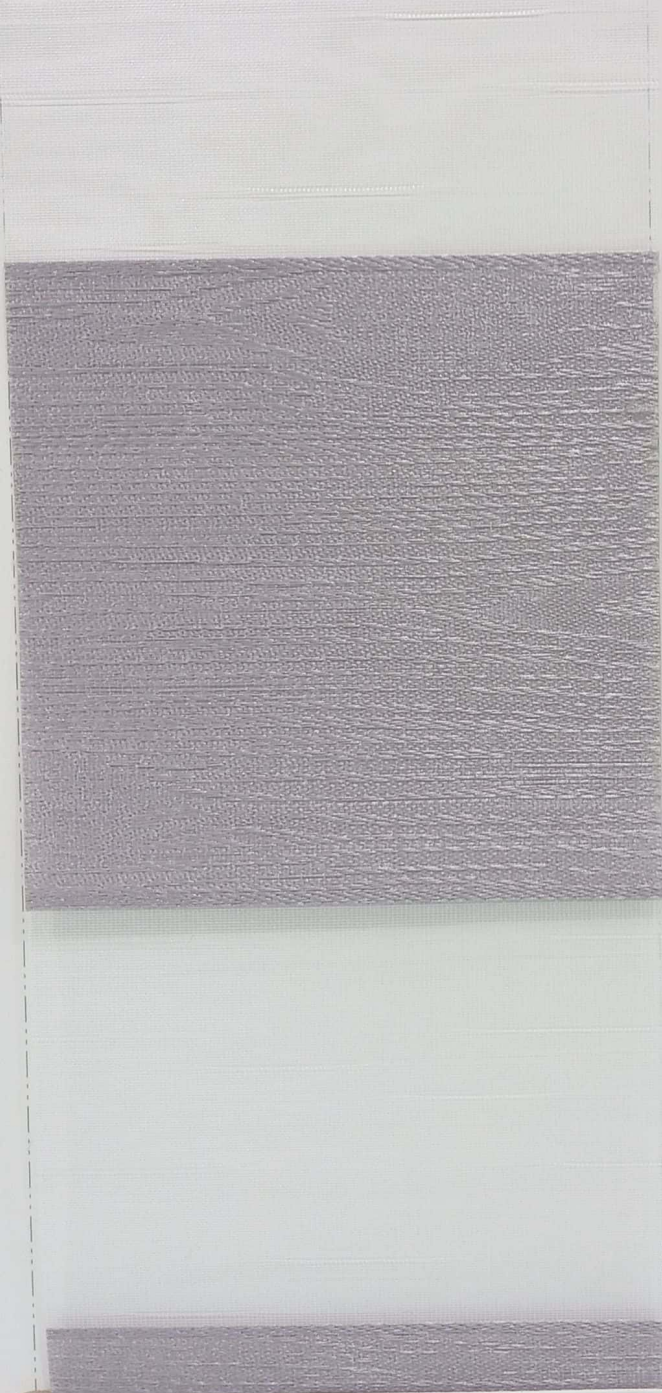
3346



Technical Data  
Extraction: Formaldehyde Amount  
<30 p.p.m

Color fastness to light  
up to 4-5-Grade

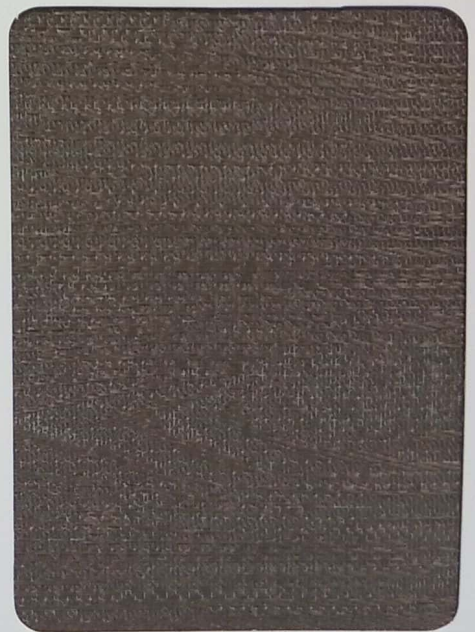
# Zebra Blinds



3348



3347



3349



Technical Data

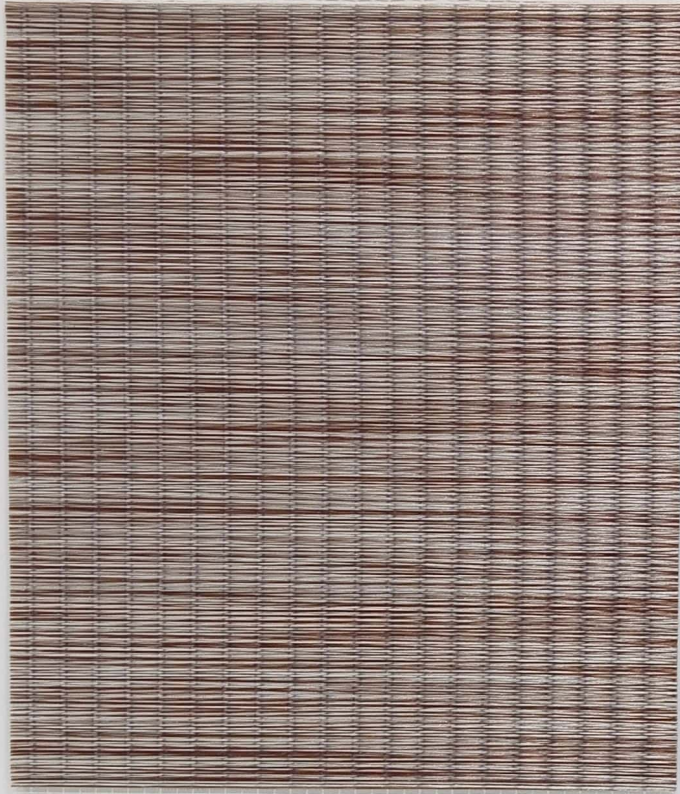
Extraction Formaldehyde Amount  
<30.p.p.m

Color fastness to light  
up to 4-5-Grade

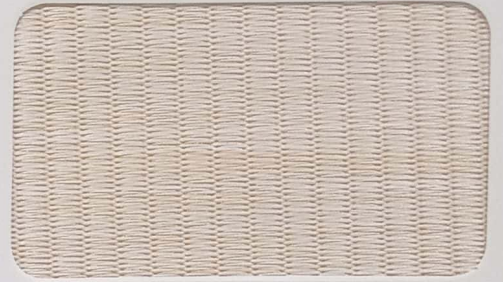
# Zebra Blinds



VIENTO  
BLINDS



3395



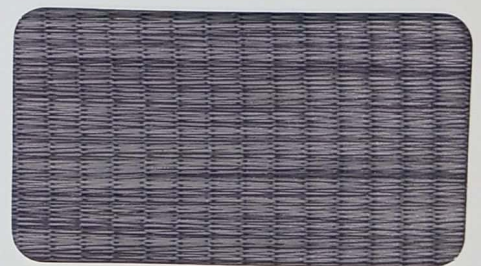
3396



3397



3398



3399



3400



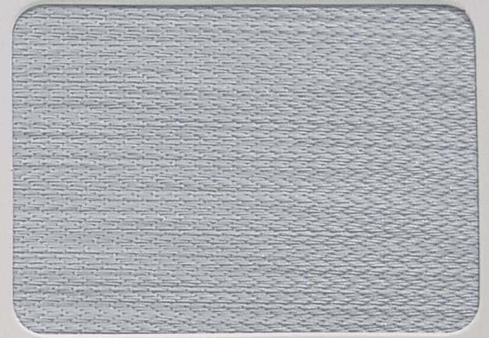
Technical Data  
Extraction Formaldehyde Amount  
<30 p.p.m

Color fastness to light  
up to 4-5-Grade

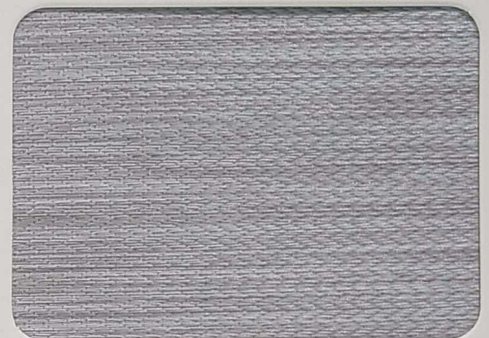
# Zebra Blinds



3309



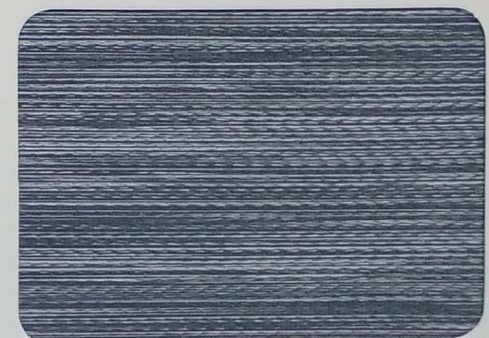
3310



3311



3312



3313

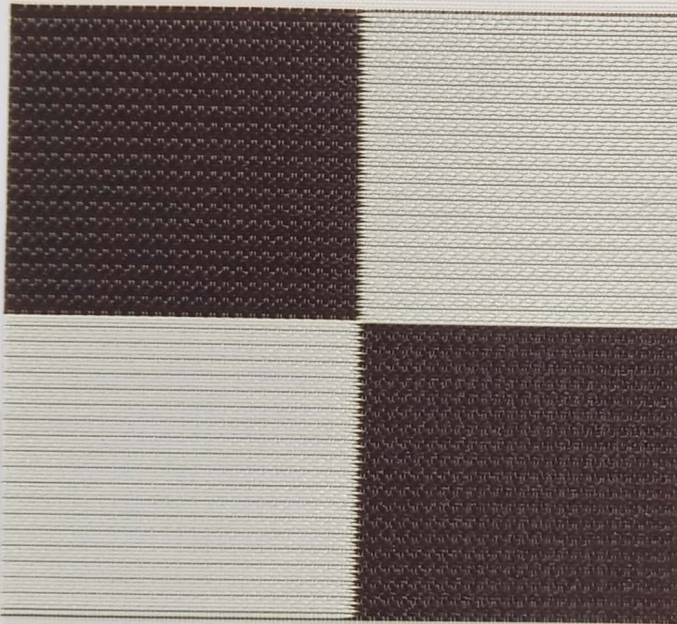


Technical Data  
 Extrication Formaldehyde Amount  
 <30 p.p.m

Color fastness to light  
 up to 4-5-Grade

# Zebra Blinds

®  
**VIENTO**  
 BLINDS



3393



3391



3392



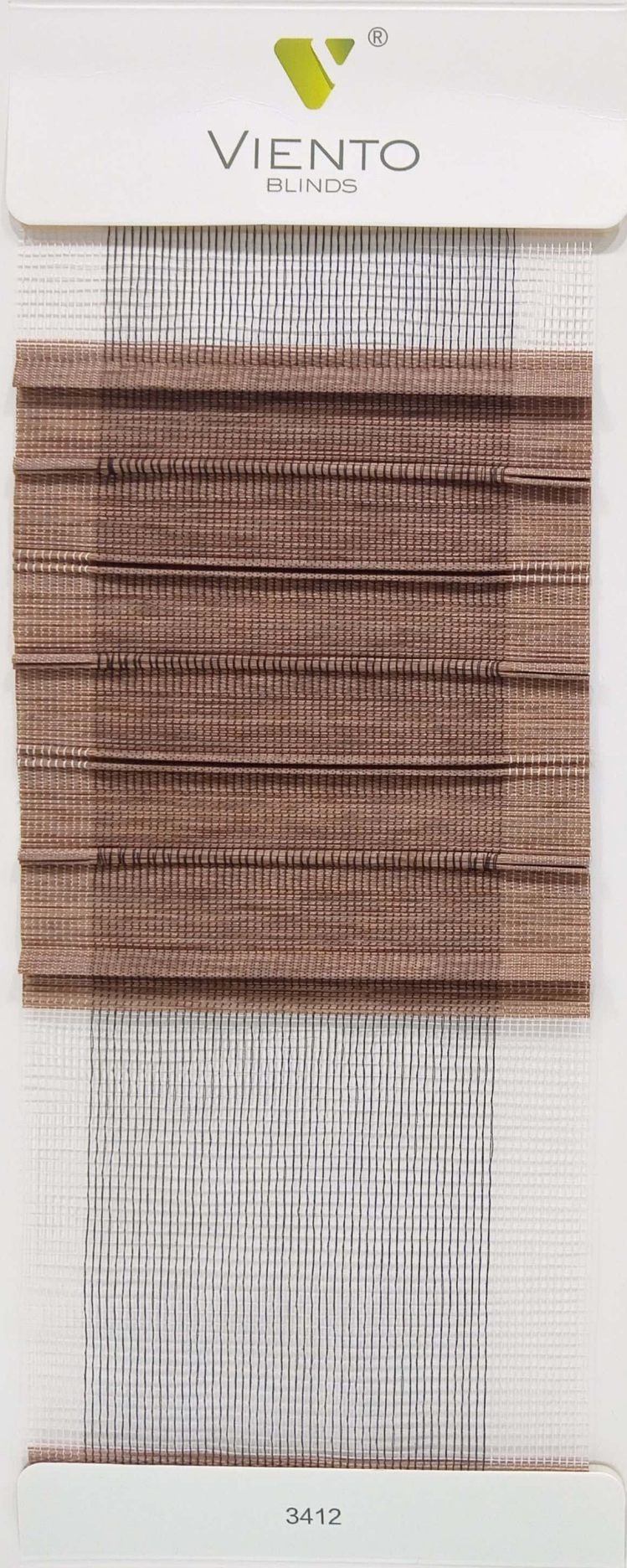
3394



Technical Data  
 Extrication Formaldehyde Amount  
 <30.p.p.m

Color fastness to light  
 up to 4-5-Grade

# Zebra Blinds



3413



3414



3415



Technical Data  
Extraction Formaldehyde Amount  
< 30 p.p.m

Color fastness to Light  
Up to 4-5-Grade

# Zebra Blinds

  
**VIENTO**  
BLINDS



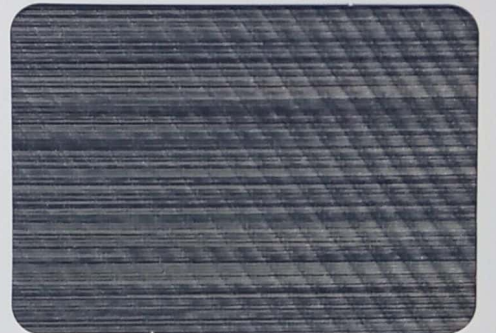
3374



3375



3376



3377



3378