

enamora[®]

Spring Summer 2024

LINGERIE

VERSATILITY REDEFINED
WITH TRENDY STYLES

ATHLEISURE

EFFORTLESSLY
CHIC ACTIVEWEAR

ESSENTIALS

EVERYDAY COMFORT,
ELEVATED

SHAPEWEAR

SCULPTING SUPPORT,
INVISIBLE COMFORT

PANTIES

DELICATE,
SEAMLESS
SILHOUETTES

TROPICAL IMPRESSIONS

Nature's palette unveiled



SPRING SUMMER 2024

Welcome to a world where exotic landscapes and vibrant cities come alive in our latest Spring Summer Collection. Inspired by the captivating beauty of Madagascar and the pulsating energy of Rio, our pieces embody the essence of these breathtaking locales.

Madagascar's delicate orchids, golden lemurs, and stunning sunsets converge to infuse our lingerie with rich sunset hues and blush tones in hi-tech functional lace. This ultra-modern, flat lace, with its flex smoothing grip, represents the lingerie of the future. From wire-free corsetry-inspired bralettes to plunge curve-enhancing bras, our versatile range caters to weddings, vacations or everyday wear.

Capture the pulsating energy of Rio that bursts with vibrant colors and tropical allure. From tropical leaves dancing in light, flat lace to vibrant blue and rose floral printed t-shirt bras, our pieces echo the essence of Rio's vibrancy. Exotic floral hues in bright lace, micro nylon, and tulle come together in plunge curve-enhancing bras, wired lace multiway lift bras, and silky soft cami & short nightsets, a blend of comfort and beauty for any occasion.

INNOVATION

Thoughtfully crafted lingerie for you

WELLNESS INNOVATION



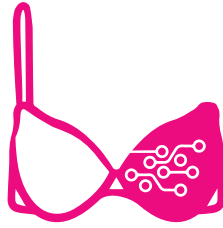
REVOLUTIONARY FABRIC

Our bras are also good for you and the planet with our Dope Dye and Eco Melange fabrics. Meanwhile, our cloud soft cups, perforated cups, Argenduer finish and cotton with cooling finish keeps you feeling fresh and fab all day. Our naturally anti-microbial Bamboo bras ensure soft feel and all day freshness.



SOPHISTICATED DESIGN & FIT

HI-TECH DESIGN & FIT



Thoughtful additions make our bras fit fabulously. Our strapless bras have underbust lift panels and double grippers for excellent hold. Meanwhile, innovations like one-piece cups, hidden construction, precision lift panels and soft brushed elastic straps provide no-pinch, no-dig support and shaping. All these features ensure superior customer delight.



ADVANCED TECHNOLOGY



Our bras feature innovations like bonded with no stitch technology that gives you perfect smooth seamless looks, invisibility and lightness, flat-knit technology for no-pinch, no-dig comfort and flexibility.



new

F134 (T-SHIRT BRALETTE)

Padded • Wirefree • High Coverage

LONGLINE PLUNGE LACE TRIM BRALETTE

- High coverage, padded, wirefree • No-spill promise with high coverage cups • Smooth, no-show through look with moulded cups • Complete under-bust support with wire-free extended frame • Trendy corset look with laced mesh band at bottom • Fully adjustable straps
- Cami back for deeper back outerwear • Feminine look with stylish lace detailing in front

Bras:



Hibiscus
Red



Pearl
Blush

Sizes - B/C : 32-38 ; D : 32-36



new



N138 (CAMI-SHORT SET)

• Two-piece glam nightwear set with premium stretch lace on the cups and silky polyamide at the bottom • Ideal shaping and gentle lift with lined cups and empire line pattern • Ideal for sleep or lounge with Soft elasticated back hold • Comes with co-ordinated shorts made with super soft microfiber fabric for comfort • Better comfort, support and flexibility with covered waist elastic • Relaxed 'A' lined fit for comfort and to suit all shapes

Nightwear:



Hibiscus Red



Black

Sizes - S, M, L, XL

new

F138 (T-SHIRT BRA) / P138

Padded • Wired • High Coverage

PERFECT LIFT BRA

- High coverage, padded, wired • Gives seamless look under any outerwear with moulded cup pattern
- Better durability with premium crush-proof cups • Smooth lift and shaping with ideal density foam and wire pattern • In-trend long-line Corset detailing on the front • Cami back for deeper back outerwear
- Fully detachable and adjustable straps • High side coverage for smooth hold • Trendy X shaping in front
- Full coverage at back • Soft polyamide fabric • All day comfort with flat elastics • No-dig promise with soft waist elastic • Better comfort and hygiene with absorbent pure cotton crotch

Co-ordinates:



Pearl
Blush



Hibiscus
Red



Black

Sizes - B/C: 32-38 ; D: 32-36 ; S, M, L, XL





F023 (T-SHIRT BRA) / P000

Padded • Wirefree • Medium Coverage

PERFECT PLUNGE T-SHIRT BRA

• Padded cups for no apex show-through • Plung cup with broad neckline to suit deep outer wear • Wirefree frame for flexibility & comfort • Lightweight T-Shirt bra with ideal coverage • Soft fabric gives excellent flexibility and soft feel • Cami back for deeper back outerwear • Detachable straps can be converted to halter or criss-cross or replaced with fancy straps • Low waist co-ordinate panty with flat elastic minimizes show-through

Bras:



Fringed
Hibiscus
Print



Nostalgia
Rose



Ink
Grey



Black

Co-ordinates:



Sorrento
Print



Pink Wild
Lace Print



Silver
Rose Print

Sizes - B/C: 32-38 ; D: 32-36 ; S, M, L, XL, XXL

new

F132 (STRAPLESS T-SHIRT BRA)

Padded • Wired • High Coverage

TRANSPARENT BACK MULTIWAY BRA

- High coverage, padded, wired • Ideal under translucent or low back outfits with transparent back strap
- Uplifted, Slimming and youthful shaping with ideal curve cups • Better lift and hold with underwire
- Multiway styling with detachable straps • Full front cradle support and wide back strap for better grip

Bras:  Honey Beige

 Black

Sizes - B/C/D : 32-38 ; DD : 32-36






F133 (LIGHTWEIGHT T-SHIRT BRA)

Padded • Wired • Medium Coverage

PERFECT LIFT PLUNGE-BALCONETTE BRA

- Medium to low coverage, padded, wired • Coverage that suits scoop, square and deep necklines
- Gives youthful and rounded contour with plunge-balconette frame • Multiway styling with fully adjustable and detachable straps • Ideal for deep backs with narrow hook & eye • All day comfort with its flexi underwires • Available in solid colors and printed patterns

Bras:  Rio Print

 Black

Sizes - B/C : 32-38 ; D : 32-36

new

F115 (PLUNGE PUSH-UP BRA)

Padded • Wired • Medium Coverage

STRAPLESS MULTIWAY BRA

- Medium coverage, padded, wired strapless bra • Increases bust by one size with double push-up cups
- Spill proof hold with its perfect-curve foam cups • Better grip and smooth hold with double layered wings and silicon elastic • Enhances cleavage and lifts with underwire pattern • Plunge front can be worn with deep neck outerwear • Versatile styling-Wear it 7 ways

Bras:  Black

 Honey Beige

Sizes - B/C : 32 - 38



new



F131 (T-SHIRT BRA)

Padded • Wirefree • Medium Coverage

AIRBRUSH SOFT BALCONETTE BRA

• Medium coverage, padded, wire-free • Slimming and youthful lift with ideal density cups and precise patterning • Curvier, smooth look to bust with moulded foam cups • Air brush feel on skin with super soft powder finish fabric on cups and wings • Flexible all day comfort with wirefree frame • Wider straps and hook and eye on bigger sizes for better comfort and support

Bras:


Nostalgia
Rose


Honey
Beige


Black

Sizes - B/C/D : 32-38

F084 (T-SHIRT BRA)

Padded • Wired • Medium Coverage

INNOVATION

ULTRA SMOOTH & SEAMLESS LIFT

- No-stitch technology with invisible edges provides a smooth, seamless look
- Hidden metal-free wire provides extra flexibility
 - Lightweight bra offers no-dig feature and 24/7 comfort
 - Perfectly lifts and shapes your bust
 - Leotard back smoothens and supports, with a pinch-free hold

Bras:



Black



Strawberry
Ice



Nude

Sizes - S, M, L, XL





F065 (T-SHIRT BRA) / P000

Padded • Wirefree • High Coverage

INVISIBLE NECKLINE

- Padded cup for no apex show-through • Plunge neckline with widely spaced straps to suit deep or wide necklines • High curved coverage for a no visible bra line on both fuller and more shallow shaped busts • Curved neckline ensures no-spill hold • Detachable soft satin edge flexi straps for versatile styling • Low waist co-ordinate panty with flat elastic minimizes show through

Bras:



Pink
Champagne



Honey
Beige



Buff



Black

Co-ordinates:



Autumn
Melody Print



Amaranto
Print



Wildflower
Melody



Plum
Blossom

Sizes - B/C: 32-38 ; D:32-36 ; S, M, L, XL, XXL

SUPIMA
WORLD'S FINEST COTTONS

A039 (T-SHIRT BRA)

Padded • Wirefree • Medium Coverage

PERFECT COVERAGE

• Ideal coverage plunge T-Shirt bra • Stretch cotton for extra comfort • Ideal padding provides lift and contours the bust • Wirefree feature provides extra comfort • Also available in Supima cotton fabric - world's finest cotton exclusively grown in America

Bras:

 Red Swirl Print	 Lilac Marble Print	 Lilac Aster	 Grey Melange	 Evening Blue	 Pearl
		 Grapewine	 Skin	 White	 Black

Sizes - B/C/D: 32 - 38





A042 (CLASSIC BRA)

Non-padded • Wirefree • High Coverage

SIDE SUPPORT SHAPER

- Classic side support bra for a slimming held-in shape and lift • Smooth look with double-layered wirefree cups • High coverage style ensures no spillage • Antimicrobial fabric keeps you fresh all day • Fab cool cooling fabric powered by N9 world technology absorbs moisture and keeps you upto 2°C cooler

Bras:

						
Lupine Print	Ginko Scattered Print	Revello Print	Ditsy Dots Print	Orchid Melange	Chambray Mélange	
						
Tomato Mélange	Skin	Purple	Pearl	White	Black	



Sizes - B/C: 32-42 ; D: 32-40 ; DD: 32-38

new

A125 (T-SHIRT BRALETTE)

Padded • Wirefree • Medium Coverage

EASY FIT COOLING FINISH COTTON

- Medium coverage, padded, wire-free beginners bra
- Smooth look with seamless moulded cups
- Flexi support with bottom logo band
- Multi-way styling feature with fully adjustable and detachable straps
- Ease of wear with narrow hook & eye at back
- Ultimate comfort and light support with fixed cups to for developing busts

Bras:  Grey Melange |  White |  Charcoal Melange

Sizes - S, M, L, XL







FABULOUS BASICS



Experience ultimate comfort and timeless elegance with our Fabulous Basics collection, including 18-hour comfort core and cotton bras. Discover unmatched quality and effortless style in every stitch.






F165 (ECOLITE T-SHIRT BRA) / P165



Padded • Wirefree • High Coverage



PERFECT LIFT

- Perfect density cup for better lift, support and natural shaping
- Higher centre front for better support
- Light and thin cup for better flexibility and smooth look under snug tops
- Gentle wirefree support for all day comfort
- Solid: Dope dyed polyamide fabric for an eco-friendly option and ultra-soft, light and fine, silky feel
- Print: Ultra fine, soft, smooth and light polyamide fabric
- Detachable fully adjustable straps convert to criss-cross or use transparent
- U-shaped back for better back and side support and no-slip strap promise
- Low waist panty crafted with premium, eco-friendly, ultra-light and smooth silky fabric

Bras:  Honey Beige |  Peach Coral |  Black

Co-ordinates:  Festive Petal Print |  Dainty Petal Print

Sizes - B/C: 32-38 ; D: 32-36 ; S, M, L, XL, XXL



F057 (ECOLITE T-SHIRT BRA)

Padded • Wired • High Coverage



CRUSH PROOF CUPS

- Crush proof cups to retain best shape wash after wash
- Premium, eco-friendly, ultra light and smooth feel fabric
- Moulded cup for smooth no-show-through under T-Shirt
- Slim adjustable detachable straps
- Leotard back for no slip strap promise & better side smoothening
- Clean finish double layer wing to avoid pinching and digging into the skin
- Full bottom band to give support and comfort
- Wider and longer hook & eye for more back comfort



Bras:  Honey Beige |  Ink Grey |  Black

Sizes - B/C: 32-38 ; D: 32-36



**18 HOUR
Comfort**
FEEL FABULOUS ALL DAY

A076 (T-SHIRT BRA)

Padded • Wirefree • High Coverage

ULTIMATE LOUNGE BAMBOO POP-ON BRA

- Engineered with Fab Comfy 5 technology, this bra supports you with gentle support, soft hold straps, flexi-grip elastic and gives you perfect shape and coverage
- Naturally antimicrobial Bamboo fabric for all day freshness
- Metal free lounge / sleep bra
- Inner shaper and sling for lift and support
- High coverage 'X' frame for no spill hold even when sleeping
- Double layer back for extra hold and smoothing
- Removable cups for convenience and multi-wear
- Pop-on bra for easy slip-on and slip-off
- Deeper, wider back for deep back outerwear



Bras: Pearl Blush | Rose Blush | Eclipse

Sizes - S, M, L, XL

A077 (T-SHIRT BRA)

Padded • Wirefree • High Coverage

INNOVATION

INNOVATIVE BAMBOO FABRIC FULL SUPPORT BRA

- Engineered with Fab Comfy 5 technology, this bra supports you with gentle support, soft hold straps, flexi-grip elastic and gives you perfect shape and coverage
- Naturally antimicrobial Bamboo fabric for all day freshness
- Fully covered elastics for no pinch anywhere
- Thoughtful underbust support with soft tape construction
- High coverage for no spill hold
- Inner V panel for support
- Fixed foam cup for no nipple show through
- Clean finish neckline for invisible look under clothes
- Back adjustable and removable straps for multiway styling
- Deeper, wider back for deep back outerwear



Bras: Rose Blush | Pearl Blush | Eclipse

Sizes - B/C: 32-38 ; D: 32-36



**18 HOUR
Comfort**
FEEL FABULOUS ALL DAY



18 HOUR
Comfort
FEEL FABULOUS ALL DAY

A058 (MIMIMIZER T-SHIRT BRA)

Padded • Wirefree • Full Coverage



COTTON ANTIMICROBIAL COMFORT BRA

- No pinch minimizer reduces cup by one size • Made of antimicrobial cotton fabric for fabrics to stay fresher longer • Side panel for uplifting and slender silhouette support • Wirefree hidden elastic comfort • High neckline for a no-spill hold • Fixed cup for ideal modesty coverage
- Moulded front with clean neckline for a smooth look under fitted outer wear • Wide self fabric straps for all day comfort and support • Adjustable back straps - wider straps on bigger sizes for better lift and comfort
- Cami back for deeper back outerwear • Back open with wider hook and eye on bigger sizes for better comfort

Bras:  Peach Blossom |  Pale Skin |  Black

B/C/D/DD:34-38

A032 (T-SHIRT BRA)

Padded • Wirefree • Medium Coverage

INNOVATION

INVISIBLE NECKLINE IN COTTON

- Cloud soft foam cup for a 'feels like nothing' fit • Innovative bond technology for an invisible yet soft hold at neckline • Key hole at centre front for air-flow • Balconette frame for a youthful rounded contour • Gentle 'U' shaped lift for a perfect silhouette • Wirefree soft flexi band provides all day comfort

Bras:  Rosette |  Silver Lilac |  Eclipse |  Cherry Blossom |  Black

Sizes - B/C: 32-38



18 HOUR
Comfort
FEEL FABULOUS ALL DAY



A064 (FULL SUPPORT)

Padded • Wirefree • Full Coverage

CLOUD SOFT COTTON MINIMIZER

- Cloud soft cups for ultimate softness and sag support • Hi-tech bonding for an invisible neckline • Hidden V-frame and full coverage for no spill jiggle control • Minimised cup projection • Wirefree and covered bottom elastic for no-pinch and no-dig comfort • Bonded cushioned straps for no-pinch shoulder strap • Triangle breather vent
- Side panels for shaping on bigger sizes

Bras:  Rosette |  Grapewine |  Black

Sizes - B/C/D : 34 - 38 ; C/D : 32

A017 (T-SHIRT BRA)

Padded • Wirefree • High Coverage

SMOOTHENING WIREFREE BALCONETTE

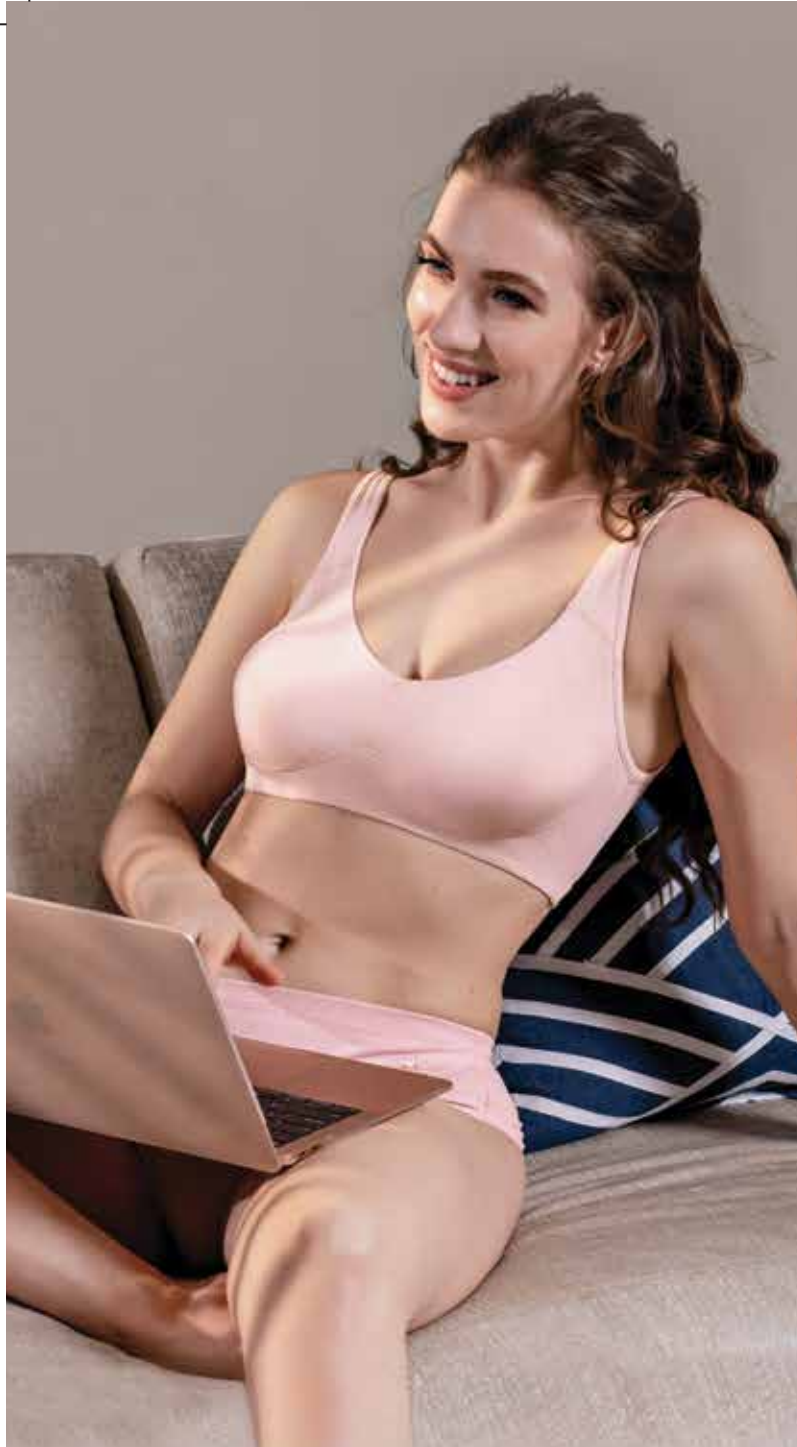
- Crafted in comfy and breathable stretch cotton for all day comfort
- Lightweight cups gives a seamless finish to wear under fitted garments
- Balconette fit gives a slimmer uplifted silhouette • Comes with good front and side support

Bras:  Ginko Print |  Blue Prim Rose |  Pink Prim Rose |  Orchid Melange |  Capri Melange

 White |  Skin |  Black

B/C: 32-38 ; D: 32-36





F037 (T-SHIRT BRA)

Padded • Wirefree • Full Coverage



INNOVATION

ULTRA SMOOTHENING NO PINCH

• Smooth, soft and seamless knitting ensures that there is no elastic at the bottom band to pinch or dig • Lightweight fixed cups ensure no show-through • The design ensures complete flexibility • Engineered knitting ensures soft, gentle lift and perfect shaping • Wide, full coverage ensures no spillage • 'U' back gives ideal side and back support with no-slip strap promise • Back open for ease of wear

Bras:



Black



Lisbon
Blue



Orchid
Smoke



Almond
Skin



Pastel
Lilac

Sizes - S, M, L, XL



A106 (T-SHIRT BRA)

Padded • Wirefree • Full Coverage



BEGINNERS POP-ON BRA

• Perfect beginners pop-on bra with removable pads • Moulded double layer front for no seam show through • Wide metal-free self fabric straps provides no-pinch promise and does not dig into your skin • Wide bottom band for better support and comfort • Back keyhole for extra stretch and ease of wear • Bottom basque shaping for comfort, lift, support and to keep the cups in place

Bras:



Blushing
Bride



Skin



Black

Sizes - XS, S, M, L, XL, XXL



A022 (CAMI BRA)

Non-padded • Wired • Full Coverage



BASIC CAMI WITH DETACHABLE STRAPS

- Perfect high coverage beginners bra • Slim detachable straps
- Back key hole for extra stretch • Breathable cotton stretch fabric
- Moulded front for seamless smooth shaping • Double layer front minimizes show-through • Fully adjustable straps to fit everyone of various height



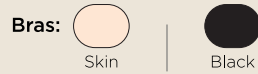
Sizes - S, M, L, XL, XXL

A073 (SUPPORT BRA)

Non-padded • Wirefree • Full Coverage

STAY NEW ELEGANT COTTON BRA

- Engineered with Fab Comfy 5 technology, this bra supports you with gentle support, soft hold straps, flexi-grip elastic and gives you perfect shape and coverage • Sturdy elastics for better grip
- Aesthetic top lace panel provides jiggle control • Cool breathable cotton rich fabric for all day comfort • Inner shaper and sling for lift and support • Smooth cups in durable fabric • Fully adjustable straps to suit varied heights • Wide hook and eye for better support
- 'U' shape back ideal for scoop back outerwear



Sizes - B/C: 32-38 ; D: 32-36



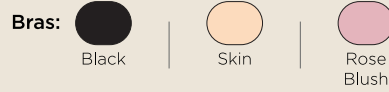


A019 (WIREFREE STRAPLESS)

Non-padded • Wirefree • High Coverage

PERFECT SHAPING TUBE

- Fully detachable convertible straps, for multiway styling • No slip promise with soft silicon gripper-elastic • Ideal coverage for modesty and comfort even when worn strapless • Great fit with ideal bust depth and moulded curvature • Added support with soft, brushed, underbust cradle
- Stay comfortable all day with stretch cotton fabric which is naturally breathable and absorbent



Sizes - B/C: 32-38

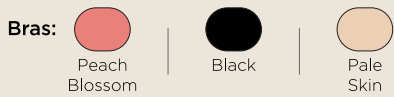


A072 (T-SHIRT BRA)

Non-padded • Wirefree • High Coverage

BASIC CAMI WITH DETACHABLE STRAPS

- Engineered with Fab Comfy 5 technology, this bra supports you with gentle support, soft hold straps, flexi-grip elastic and gives you perfect shape and coverage • Soft décolleté elastic for no pinch hold • Thoughtful petal at cup for no-show • Hidden half-cradle for side support • High coverage neckline for no-spill • Back adjustable straps to suit varied heights • Cami back for deep back outerwear



Sizes - B/C: 32-38



A027 (T-SHIRT BRA)

Non-padded • Wirefree • Full Coverage



ULTRA SMOOTHENING NO PINCH

- Breathable stretch cotton comfort • Gentle lift and support
- Soft plush fabric with moulded cups • Ultra smoothing no pinch



Sizes - B/C/D: 32-38



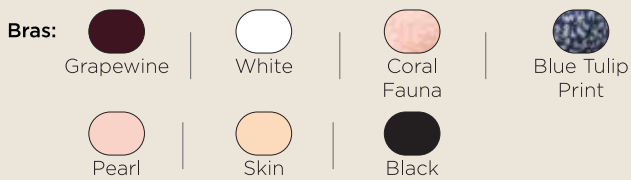
A055 (COMFORT SHAPER)

Non-padded • Wirefree • Full Coverage



COMFORT SHAPER WITH DETACHABLE STRAPS

- Plush sling for side shaping and naturally uplifted bust • Provides smooth coverage • Stretch cotton for 24/7 comfort • Longer hook & eye for better adjustment



Sizes - B/C: 32-38



FASHION



Elevate your lingerie game with our Fashion Bras collection, featuring chic bralettes and exquisite bridal bras. Embrace style and grace with every design, tailored to redefine sophistication and allure.

F127 (PLUNGE BRA) / P127

Padded • Wired • Medium Coverage

LUXE LACE PLUNGE BRA

- Medium to low coverage, padded, wired plunge bra
- Dainty floral lace for premium appeal
- Wired lift for best shaping
- Low cami back to accommodate low back outerwear
- Double layer wings for support and smoothing comfort
- Flattering frame with wide satin straps
- Low waist bikini fit panty
- Premium appeal with luxe lace at the sides
- No-dig promise with ultra soft satin elastics at waist and leg
- High back coverage with minimized panty lines
- All-day, absorbent comfort with pure cotton crotch

Co-ordinates:



Silver Lilac



Pearl Blush

Sizes - B/C: 32-38; D: 32-36 | S, M, L, XL





N127 (FIT AND FLARE CHEMISE)

- Padded cups in the front with lacy keyhole at under bust for breathability
- Medium coverage no-spill hold • Mid thigh length chemise • Soft and light, fit and flare silhouette
- Luxe lace with wide satin straps for premium appeal
- Delicate aesthetic with satin tie up at the back for ease of wear, grip and a playful look

Nightwear:

	
Silver Lilac	Pearl Blush

Sizes - S, M, L, XL

F125 (PLUNGE BRA) / P125

Padded • Wirefree • High Coverage

LONGLINE COMFORT PLUNGE LACE BRA

- High coverage, padded, wirefree longline bra • Plunging V-neckline with supportive extended lace design • Soft grip with super soft brushed straps • Curve-hugging fit with the plush demi foam cups • Better hold at the wings with double layer soft stretch mesh fabric • Multi-way styling with detachable straps • Gorgeous tile-like lace design on the cups & bottom band gives it a trendy look • Medium waist hipster co-ordinate panty • Trendy look with cut away ring detail at back waist • No-dig promise with flat soft waist elastic • Tile-design stretch-lace at the waist & back for a stylish look • Stretch tulle fabric at back for soft feel on skins • Full back coverage with minimized panty lines

Co-ordinates:



Nugget



Cedar
Wood

Sizes - S, M, L, XL | S, M, L, XL





N125 (LACE LOUNGER PYJAMA SET)

- Two-piece Cami & Slinky-shorts set
- Precise pattern for better hold and bust support
- Adjustable back crisscross spaghetti straps with front V-neckline
- Feminine look with tile-lace at neckline and cut away ring detail in the front
- Elasticated waist band for support and flexibility with itch-free feature
- Trendy luxe for summers, can be worn as sleepwear or as loungewear
- Silky micro fibre co-ordinated camisole set

Nightwear:



Nugget



Cedar Wood

Sizes - S, M, L, XL

F118 (T-SHIRT BRA) / P118

Padded • Wirefree • High Coverage

FLEXI COMFORT FASHION BRA

- All day comfort bra with lightweight cups • Features a sleek V-neckline • Wirefree style with complete bottom support for softer all day lift • Comfort hold and no pinch grip • Extended neckline provides support and trendy look
- Covered bottom elastic for itch-free, support and flexibility • Clean finish double layer wings to avoid pinching and digging into the skin • Narrow hook and eye can be worn under deeper back outfits and for better back comfort • Mid waist hipster co-ordinate panty • Flat & pretty lace at the sides for a stylish look • Stretch tulle fabric at the back for a soft feel on skin • Covered waist elastic for itch-free, support and flexibility • Full back coverage with soft & flat elastics for no panty lines • Cotton lining at crotch for absorbency and all day comfort

Co-ordinates:



Violet
Tulip



Dusty
Rose

Sizes - B/C: 32-38 ; D: 32-36 | S, M, L, XL





N118 (HALTER BABYDOLL)

• Halter neck nightwear with the front cut out detail • Double layered cups combined with an empire waist for support • Cups adorned with delicate scallop lace & soft microfiber fabric at the bottom • Softer straps for adjustability • Mid-thigh length • The nightwear gives a snug and flattering fit

Nightwear:  Violet Tulip |  Dusty Rose

Sizes - S, M, L, XL

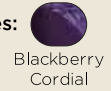
F116 (CAMI PUSH-UP BRA) / P116

Padded • Wired • High Coverage

LACE CAMI BRA

- Lightweight cushioned cups with underwire for a mild push-up • Cami bra fit for an ultra smooth silhouette under the tops • Cami bra can also be worn under blazers as crop top • Floral lace on cups with soft mesh lining creates a beautiful effect • Ideal underband support with broad bottom elastics • Soft micro fibre at back • Detachable & convertible back straps offer wardrobe versatility, halter and crisscross • Wider and longer hook and eye for better back comfort and adjustability • Mid waist hipster co-ordinate panty • Pretty scallop lace at the front for a trendy look
- Soft microfiber fabric at the back for a soft feel on skin • Full back coverage with soft & flat elastics for no panty lines • Cotton lining at crotch for absorbency and all day comfort

Co-ordinates:



Blackberry
Cordial



Dusty
Rose

Sizes - B/C: 32-38 ; D: 32-34 ; D: 32-36 ; S, M, L, XL, XXL





N116 (CAMI-SHORT SET)

- Two-piece nightwear set with floral lace at V-neckline with contrast jersey lining for a feminine look
- Molded double layer cups for minimized nipple show through for soft hold
- Silky microfibre camisole features spaghetti straps for adjustability
- Comes with coordinated shorts
- Shorts made with super soft microfiber fabric for comfort
- Covered waist elastic for itch-free, sweat wicking, support and flexibility
- Great for summers. Can be worn as a sleepwear or as a loungewear

Nightwear:



Blackberry
Cordial



Dusty
Rose

Sizes - S, M, L, XL



F130 (LONGLINE BRA) / P130

Padded • Wired • High Coverage

FLEXI LIGHT PRINTED BUSTIER BRA

• High coverage, padded, wired balconette bra • Smoothened moulded look and comfort with extra hold mesh • On-trend look with floral printed mesh fabric on the cups & wings • Bustier frame that can be worn as a crop top and paired with outerwear for a trendy look • Multi-way styling with detachable straps • Ultra-wide hook and eye for superior hold • Medium waist co-ordinate hipster panty • Flexible held-in comfort pattern with soft elastics at waist and leg • Full back coverage with soft and flat elastic minimised panty lines • Smoothened look with super comfortable soft-hold mesh • All-day, absorbent comfort with pure cotton crotch

Co-ordinates:



Sizes - B/C: 32-38; D: 32-36 | S, M, L, XL



F114 (PUSH-UP BRA)

Padded • Wired • High Coverage

POWDER AIR BRUSH PUSH-UP

• Precisely curved cups for enhanced shaping with super soft level 2 gel fill push • Smooth moulded cups • Better support & bottom hold with underwire • Ultimate all-day comfort with the smooth brushed powder finish fabric • Eco-friendly & sustainable fabric, consists of recycled yarn • No-chafing with 2-layer fabric at the cradle • Clean finished look with no visible seams at the top and bottom wings • Double layered at the wings provides a smooth shape, more support & no visible lines • Multi-way styling with detachable straps



Sizes - B/C : 32-38



F040 (T-SHIRT BRA) / P040

Padded • Wired • Medium Coverage

LONG LINE LIFT

• Classic long line bra with medium coverage • Crush proof cups gives it a smooth look • Perfect long line lift • Trendy embroidered geometric lace trim • Ultra low waist co-ordinate panty has criss-cross string detail and comes with medium back coverage

Co-ordinates:  | 
Crimson Red | Black

Sizes - B/C: 32-38 ; D: 32-36 | S, M, L, XL





F043 (PLUNGE PUSH-UP) / P043

Padded • Wired • Medium Coverage

KISSING FRONT CLEAVAGE ENHANCER

• Light and stretchy Japanese lace with delicate blossoms for an elegant look • Extended neckline with side support • Lightweight cups provide gentle mild push-up and cleavage enhancement • Low waist panty with medium back coverage

Co-ordinates:  | 
Claret Maroon | Butterscotch

Sizes - B/C: 32 - 38 ; D: 32-36 ; S, M, L, XL



F091 (PLUNGE PUSH-UP) / P091

Padded • Wired • Medium Coverage

BUTTERFLY CLEAVAGE ENHANCER

• Extended neckline with butterfly base longline • Soft laminated single push-up, lifts the breast and increases the size a little and enhances the cleavage • Kissing front tilt underwire brings the bust in the front from side to side to create cleavage and gives a little lift • Flat galloon lace gives excellent look and no show through • Flexible bone on sides to make sure the lace is placed right on the body • Longer hook & eye for better adjustability and comfort • Can be worn with tank tops, off shoulder or boat neck tops to show off the lace • Low waist bikini panty has sides and back in a beautiful and soft butterfly pattern lace for a no visible panty lines look that gives 3/4 coverage on the back

Co-ordinates:



Forever
Rose



Forever
Rose



Plum

Sizes - B/C: 32-38 ; D: 32-34 ; S, M, L, XL, XXL



F070 (POP-ON BRA)

Padded • Wirefree • Full Coverage

ULTRA SMOOTH FREEDOM BRA

INNOVATION

- Complete, zero pinch comfort with elastic free hold • Ultimate smoothness with bond-tech • Zero nipple show-through with one piece cup • Ideal shaping with specially contoured and ridged foam
- Gentle lift with wider straps • Complete metal free, allergy free comfort with pop-on styling • Ultra feminine sweetheart neckline that blends modern cutting edge technology with classic charm

Bras:



Ink Grey



Pale Skin

Sizes - S, M, L, XL

F107 (BRALETTES)

Padded • Wirefree • Full Coverage

COTTON PLUNGE LACE BACK BRALETTE

- No peak coverage with shift free cup attachment • Uplifted, rounded shape with precise moulding and special construction
- Zero spill with full coverage • Great side coverage and support
- Soft and covered wide elastics for no pinch comfort • Delicate lace at décolleté for aesthetic appeal • Flat soft lace at back for lightness, breathability, comfort and style • Plunging wide lace at back for pretty look and wearability with deep back outerwear

Bras:



Rosette



Black

Sizes - S, M, L, XL



Front View



F111 - (BRALETTES) / POOO

Padded • Wirefree • Full Coverage

SIDE SHAPER PANEL BRALETTES

• 24x7 all day comfort fashion bralette • Side shaping bralette with broad sweetheart neckline • Smooth rounded seamless look and no apex show-through with lightly padded cups • Flexible and all-day comfort with wirefree construction • No-pinch, no-dig hold with softer straps and adjusters • Pretty back styling with floral scallop lace • Can be worn for lounging or can be worn as crop tops with denims or skirts • Designed with semi shine soft stretch fabric at the front and scallop lace at the back • Low waist co-ordinate panty with flat elastic minimizes show through

Co-ordinates:



Moonlit
Blue



Black

Sizes - B/C: 32-38 ; D: 32-36 | S, M, L, XL, XXL



F058 (CONVERTIBLE BRA)

Padded • Wirefree • Medium Coverage



LOW CRISS-CROSS BACK

• Ultra low criss-cross back can be worn with super low backs and still give support • Converts to single transparent back as needed to wear under semi transparent backs • Premium, eco-friendly, ultra light and smooth feel fabric • Moulded cup for smooth no-show-through under T-Shirt • Slim removable straps which can be worn with transparent straps & adjusted as needed • Clean finish double layer wing to avoid pinching and digging into the skin for better comfort

Bras:



Ink
Grey



Honey
Beige

Sizes - B/C: 38 ; B/C/D: 32-36



F109 (BRALETTES) / P109

Non-padded • Wirefree • Full Coverage

CAMI X-BACK BRALETTE

- 24x7 all day comfort fashion bralette • Cami slip-on bralette with wide square neckline • Smooth rounded seamless look with plush absorbent lining for modesty coverage and better shaping • Flexible and all-day comfort with wirefree construction • No-pinch, no-dig hold with softer straps and adjusters • Pretty back styling with mesh and cut-out detail
- Can be worn for lounging or can be layered with outerwear • Designed with beautiful stretchy floral lace at the front and soft mesh at the back
- Low waist co-ordinate panty with no show through, designed with floral stretch lace and soft mesh lining for the body

Co-ordinates:



Aqua Grey



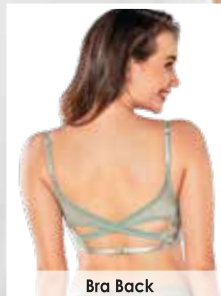
Rosette

Panty:



Black

Sizes - S, M, L, XL | S, M, L



F108 (BRALETTES) / P108

Non-padded • Wirefree • Full Coverage

V NECK LONGLINE

- 24X7 all day fashion comfort bralette • Longline bralette with V-extended neckline for a stylish look • Smooth rounded seamless look with plush absorbent lining for modesty coverage and better shaping • Flexible and all-day comfort with wirefree construction • No pinch, no dig lounge style with no adjusters and straps • Comes with hook & eye panel for adjustability options • This chic style can be worn for lounging or can be layered with outerwear • Designed with semi shine soft stretch fabric and pretty floral lace • Mid waist co-ordinate panty with no show through, designed with floral stretch lace and soft mesh lining for the body

Co-ordinates:

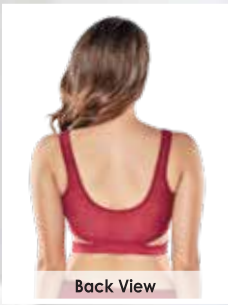


Aqua Grey



Black

Sizes - B/C: 32-38 ; D: 32-36 | S, M, L, XL



Back View

F110 (BRALETTES) / P000

Non-padded • Wirefree • Full Coverage

SPLIT BAND CUTOUT

- 24x7 all day comfort fashion bralette • Stylish split band cutout detail at the waist with broad elastic
- Smooth rounded seamless look with plush absorbent lining for modesty coverage and better shaping
- Flexible and all-day comfort with wirefree construction • No-pinch, no-dig metal-free lounge style • Easy slip-on style with no back fasteners • This chic style can be worn for lounging or can be worn as crop tops with denims or skirts • Designed with double layered soft mesh fabric • Low waist co-ordinate party with flat elastic minimizes show through

Co-ordinates:



Garnet
Rose



Black

Sizes - S, M, L, XL | S, M, L, XL, XXL



FULL & FABULOUS



Step into confidence and comfort with our Full and Fab Bras collection, expertly designed for the needs of heavy-busted women. Embrace support without sacrificing style, as each piece combines functionality with elegance for a truly fabulous fit.



A078 (MULTIWAY BRA)

Padded • Wired • High Coverage

COTTON STRAPLESS BRA

• Gripping elastics at decolette and top wing to reduce slippage of bra • High coverage for no spill hold • Fully adjustable and removable straps for multiway styling • Cami back for deep back outerwear • Breathable cotton fabric for all day comfort • Comes with transparent straps

Bras:



Pale Skin



Bridal Red



Black

Sizes - B/C/D: 32-38

F074 (FULL SUPPORT)

Padded • Wired • Medium Coverage

STRAPLESS / MULTIWAY

• Full support strapless padded bra • No silicon at back and no-pinch-wings promise • Rounded shape cups with uplifted hold that ensures no nipple show through • Knitted elastic reinforcement at back wing for extra grip and smooth slide-proof hold • Perfect coverage with no fluffing promise • Wear any outfit with this multi-way strapless T-shirt bra



Bras:



Rosette
Lace



Blackberry
Cordial Lace



Bossanova



Buff



Black




Sizes - B/C/D/DD:32-40 ; B/C/D:42





A165 (T-SHIRT BRA)

Padded • Wirefree • High Coverage

-  **ANTIMICROBIAL & SWEAT WICKING**
-  **BREATHABLE**
-  **LIGHT-WEIGHT FEEL**

ULTIMATE COVERAGE BRA

- Cooling cotton technology keeps you fresh and naturally sweat wicking property assures all day comfort • Better air-circulation with weightless perforated cups • Complete underbust wirefree support with flexible lift and 24x7 comfort • Fully adjustable detachable straps for multi-way styling
- No-pinch grip with soft broad underband elastic for total comfort
- Antimicrobial finish ensures good hygiene and protects from odour generating micro-organisms • Fab cool cooling fabric powered by N9 world technology absorbs moisture and keeps you upto 2°C cooler

- Bras:**  Tibetan Stone |  Pale Skin |  Black

Sizes - 32-38 ; D: 32-36



F124 (FULL SUPPORT)

Non-padded • Wired • Full Coverage

SMOOTHENING MINIMIZER BRA

- Minimizer visually reduces bust size & projection • Full coverage ensures no spillage • Seamless no-show through look with moulded double layer cups • Lift and shaping with full bottom band and underwire • Innovative breathable and bonded panel for better side compression • Multi-way styling with detachable, fully adjustable straps • Elevated look with Jacquard fabric

- Bras:**  Cedar Wood |  Black

Sizes - D/DD/F/G: 32; C/D/DD/F/G: 34-38 ; C/D/DD/F: 40





F126 (FULL SUPPORT) / P126

Non-padded • Wired • Full Coverage

LACE BRA

- High coverage, non-padded, wired full support bra • Supportive extended lace design with V-neckline • Youthful lift and shaping with full bottom band and underwire • Fully adjustable straps to suit all heights with best lift
- Multi-way styling with detachable straps at the back • Better support with double layered power mesh fabric at wings • Better side hold and no-slip strap promise with U-shaped back • Soft polyamide fabric • Full rear coverage • Imported embroidered tile lace panels for a delicately feminine appeal • Soft and stretchy elastics for a gentle grip • Cotton lined crotch for absorbent comfort.

Co-ordinates:



Sizes - D/DD/F/G:32; C/D/DD/F/G: 34-38 ; C/D/DD/F: 40 | S, M, L, XL, XXL

F053 (FULL SUPPORT)

Non-padded • Wired • Full Coverage

FULL COVERAGE MINIMIZER

- Full coverage minimiser for spill control • Shaped & wide strap for all day comfort • Uplifted rounded shape & extra side support on bust • Side panel shaping to minimize & hold extra flab • Plush lining for less show-through • Leotard back for no slip strap promise & better side smoothing • Imported tonal lace on side gives an elegant look • Full bottom band to give comfort and support • Hook & eye opening at back for best cup fit • Can be worn perfectly under any ethnic wear



Sizes - B/C/D/DD: 36-40 ; C/D/DD: 34





F087 (FULL SUPPORT) / P087

Non-padded • Wired • Full Coverage

PERFECT LIFT

• Side shaper with slimming and lifting feature • Precise patterning ensures ultimate contouring and shape • Comes with wide strap for extra comfort • Leotard back design has no-slip strap • Features a delicate embroidered lace for a pretty look • Ideal sweetheart neckline shape works with various outwear necklines • Mid waist co-ordinate tummy tucker panty with embroidered lace panels and bows for a delicate feminine appeal

Co-ordinates:



Silver Lilac



Confetti



Sand

Sizes - B/C/D: 34-40 ; S, M, L, XL, XXL

A014 (FULL SUPPORT)

Non-padded • Wirefree • Full Coverage

M-FRAME SHAPING

• M-frame and 3 section cup provides extra lift • Full coverage for incredible support and control • Wider strap and higher back for better hold and comfort • 'U' back for a no-slip strap promise • Antimicrobial fabric keeps you fresh all day • Fab cool cooling fabric powered by N9 world technology absorbs moisture and keeps you upto 2°C cooler

Bras:



Masai



Pearl



Skin



Black

Sizes - B/C/D/DD: 34-42





AB75 (FULL SUPPORT)

Non-padded • Wirefree • Full Coverage

M-FRAME JIGGLE CONTROL

- M-frame for jiggle control and side support to bring in the breast for a slimmer look • Moulded cups in cotton stretch ensure no seams show through and ideal shaping • Double layers of cotton stretch cups minimize show through • Fuller coverage for fuller busts promises no-spill and no-fluffing hold
- Antimicrobial fabric keeps you fresh all day • Fab cool cooling fabric powered by N9 world technology absorbs moisture and keeps you upto 2°C cooler

Bras:

 Tomato Melange	 Orchid Melange	 Pale Skin	 Purple	 White
 Pearl	 Black			



Sizes - B/C/D: 34-42



A112 (FULL SUPPORT)

Non-padded • Wirefree • Full Coverage

SMOOTH COTTON MINIMIZER

- Innovative hidden X-frame provides life & support • Hidden side panel for a slimmer held-in silhouette • Smooth cotton minimizer • Double layer, wirefree cup for a smooth no show look & comfort • Top panel for jiggle control • Full coverage ensure no spillage • Wider straps for comfort hold • Cotton stretch fabric gives 24/7 comfort

Bras:

 Rosette	 Grapewine	 Chambray Melange	 Peach Blush
 Pale Skin	 White	 Black	

Sizes - B/C/D/DD: 34-42



18 HOUR
Comfort
FEEL FABULOUS ALL DAY

F121 (FULL SUPPORT)

Non-padded • Wirefree • Full Coverage

ULTIMATE SMOOTHENING BRA

• Plush lining on the cups & wings for ultimate comfort • Smooth lift promise with precise framing • Smooth molded cups for no-show-through of seams • Wider wings for support and to hold in flab • Deep scoop neck back allows for deep outerwear • Hidden sling for lift and youthful side shaping • Ultra cushioned straps for all day comfort • Adjustable back strap for different heights

Bras:  Silver Lilac |  Honey Beige |  Black



Sizes - B: 36-40 ; C: 34-40 ; D/DD: 32-40

F122 (SUPER SUPPORT) /P122

Non-padded • Wirefree • Full Coverage

SMOOTH COMFORT CURVE LIFT

• Ultra-cushioned straps for all day comfort • "V"-frame • Layered functional Jacquard lace for super support • Smooth moulded cups for no show through of seams • Wider sides for support and to hold in flab • Deep scoop neck back allows for deep back outerwear • Full coverage with extended panel on top, for jiggle control • Hidden sling for lift and youthful side shaping • Light, sturdy specialized material for full figure minimizing fit • Adjustable back strap for different heights • Mid waist hipster co-ordinate panty • Ultra flat and smooth floral lace at the front • Flat elastic for no panty lines • Full back coverage with soft stretch tulle fabric for a soft feel on skin

Co-ordinates:  Rosette |  Blackberry Cordial

Sizes - B: 36-40 ; C/D/DD/F: 34-40 | S, M, L, XL, XXL





F129 (FULL SUPPORT) / P129

Non-padded • Wirefree • Full Coverage

LACE CONTOUR BRA

- High coverage, non-padded, wirefree full support bra • Luxe lace for an elevated look • Slimming and lifting feature with the side shaper panel
- Extra comfort with wide front straps • Sweetheart neckline that goes with various outerwear • Ultra-low waist panty • No-dig promise with ultra-soft satin elastics at waist and leg • Luxe flat stretch lace for a premium appeal • Trendy look with ultra-low waist Cheekini – half-coverage fit • Smooth seamless rear coverage under any outerwear
- All-day, absorbent comfort with pure cotton crotch

Co-ordinates:



Cosmic Sky

Violet Quartz

Sizes - B/C/D: 32-38; DD: 32-36 | S, M, L, XL

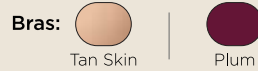
F048 (FULL SUPPORT)

Non-padded • Wirefree • Full Coverage

INNOVATION

INNOVATIVE COMPRESSION BREATHE MATERIAL BACK AND WINGS

- Minimizer with side shaping reduces projection of breasts
- Double layer compression fabric at cup for minimized, smooth look and no-show lift • Breathable bonded jacquard fabric at the back for compressing and smoothing side and back flab • Wide comfort cushion padded straps at shoulder for no-dig comfort



Sizes - B/C/D/DD/F: 34-40





FB12 (FULL SUPPORT)

FB12 (FULL SUPPORT)

Non-padded • Wirefree • Full Coverage

SMOOTH SUPER LIFT

- Classic hidden X-frame provides support & shaping • Provides lift
- Cotton-feel lining gives 24x7 comfort • Crafted with flexi fabric
- Top panel for jiggle control • Hidden side panel for a slimmer held-in silhouette

Bras:

			
Eclipse	Pink Champagne	Buff	Grapewine
			
White	Black		

Sizes - B/C/D/DD: 34-42



F024 (FULL SUPPORT)

Non-padded • Wirefree • High Coverage

 EXTRA STRETCH LIGHT, DURABLE, SOFT KIMT	 NO SLIP STRAP	 FLEXIBLE STRAPS
--	--	--

PLUSH COMFORT

- All day comfort bra • Plush inner lining ensures no show-through with smooth moulded cups • Internal sling feature gives maximum lift and shape and wirefree pattern for softer all day lift • The sleek 'V' neckline works with plunge or scoop neck outerwear • Elongated neckline with wide straps at shoulder extends the comfort factor • Comes in a special soft fabric for extra comfort • Soft finish elastics for comfort hold

Bras:

			
Pale Skin	Black	Confetti	White

Sizes - B/C/D/DD: 32-42



F135 (FULL SUPPORT)

Non-padded • Wirefree • High Coverage

WIREFREE MINIMIZER

• Classic minimiser bra reduces one cup size • High coverage offers wirefree lift • Scoop for deeper neck • Flat jacquard with no show-through • Cotton rich lining for all day comfort with breathable mesh outer layer • Plush lining to minimise nipple show through

Bras:   
 Bossanova | Buff | Black

B/C/D/DD:34-38

FB06 (FULL SUPPORT)

Non-padded • Wirefree • Full Coverage

CLASSIC LIFT

• Sturdy net at the back and side for support and shape • Sectioned cups give extra lift • Power mesh back hold design • Top panel ensures jiggle-free hold

Bras:   
 Blackberry Cordial | Masai | Pale Skin

 
 White | Black

Sizes - B/C/D/DD: 34-42





F097 (FULL SUPPORT)

Non-padded • Wirefree • Full Coverage

SMOOTH CONTOUR LIFT BRA

• M-frame contouring ensures top jiggle control • Moulded, youthful shaping with fleece lining for good lift and minimised show-through • Hidden cradle and sling for smooth support • Ladder elastic at centre front for breathability • Breathable innovative power mesh for better hold • Wide shoulder straps and bottom band with brushed back provide chafe-free hold • 'U' back for no slip strap promise & better side smoothing

Bras:  |  | 
Midnight Peony Print | Pearl | Black

Sizes - B: 36 - 40 ; C/D/DD: 34 - 40 ; B/C/D: 42

F096 (FULL SUPPORT)

Non-padded • Wirefree • Full Coverage

ULTIMATE CURVE SUPPORT BRA

• M-frame contouring ensures top jiggle control and side support • 3-section super support cup for supportive shaping and minimized show-through • Jacquard mesh outer layer on cups for breathable hold • Soft rigid cup lining for perky and youthful lift • Breathable innovative bonded power mesh at decolette and back wing for a smooth hold • Rigid stabilizer for extra support and lift • Wide shoulder straps and bottom band with brushed back provide chafe-free hold • 'U' back with no slip strap promise

Bras:  |  | 
Pearl | Ink Grey | Black

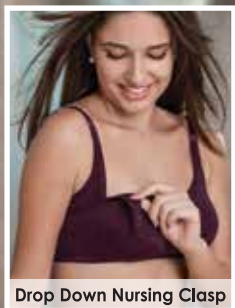
Sizes - B/C/D/DD/F/G: 36 - 44 ; C/D/DD/F: 34





NURSING

Discover comfort and convenience with our Nursing Maternity Bras collection, tailored to support to support and adapt to the changing needs of new mothers. Embrace comfort and practicality, ensuring both you and your baby are well-supported every step of the way.



Drop Down Nursing Clasp

MT02 (NURSING BRA)

Non-padded • Wirefree • High Coverage



SECTIONED LIFT & SUPPORT

- Designed by mothers who understand nursing needs • Nursing bra with easy single hand operation front clasp for ease of nursing
- Double layer cotton stretch cups to ensure superior support. Sectioned cup for full support and contouring lift to avoid later sag
- High coverage for spill proof hold and no-peek through for most regular necklines • Softer folder edges and seams to ensure there are no irritable surfaces on the baby's or mother's tender skin
- Organic stretch cotton to keep your skin dry and comfortable all day • Also available in Eco-mélange cotton stretch fabric - naturally breathable & absorbent, ultra-comfortable, flexible, skin and future friendly support

Bras:



Grapewine



Capri
Mélange



Skin



Orchid
Mélange

Sizes - B/C/D/DD: 34-40



BEGINNERS



Embark on your bra-wearing journey with confidence with our Beginner Bras collection, meticulously designed for comfort and support. Discover the perfect balance of simplicity and style, ensuring a seamless transition to everyday wear.



BBO2 (EASY FIT)

Non-padded • Wirefree • Pop-on

ANTIMICROBIAL • STRETCH COTTON

- High coverage double layered fabric in front provides modesty coverage
- Seamless smooth finish for no show-through look under clothes
- Versatile soft finish cami neckline front and back works great with all tops
- Gentle support bottom with soft fabric covered elastic
- Soft fabric covered straps for an irritation-free grip
- Metal free style provides no dig promise

Bras:  Pearl |  Black |  White

Sizes - XXS, XS, S, M



BB01 (EASY FIT)

Non-padded • Wirefree • Pop-on

ANTIMICROBIAL • STRETCH COTTON

- High coverage double layered fabric in front provides modesty coverage
- Seamless smooth finish for no show-through look under clothes
- Gentle support with soft fabric covered elastic
- 'U' back and broad fabric strap for better support and no-slip strap promise
- Metal free style provides no dig promise

Bras:  Skin |  Black |  White

Sizes - XXS, XS, S, M



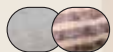
BB03 (TRENDY FIT)

Non-padded • Wirefree • Pop-on

ANTIMICROBIAL • STRETCH COTTON

• Medium coverage double layered fabric in front provides modesty coverage • Seamless smooth finish for no show-through look under clothes • Versatile soft finish cami neckline front and back works great with all tops • Soft bottom elastic for better flexibility • Adjustable straps to suit all heights

Bras:



Grey Melange/
Palm Print



Black/Zee
Stripes Print

Sizes - XXS, XS, S, M



SPORTS



Experience unparalleled support and freedom of movement with our Sports Bras collection, engineered to elevate your performance. Designed with comfort and functionality in mind, each piece empowers you to push boundaries and achieve your fitness goals with confidence.



Racer Back with Key Hole

SB08 (MEDIUM IMPACT BRA)

Padded • Wirefree • High Coverage

RACER BACK POP-ON BRA

- Metal free pop-on bra for perfect coverage • Racer back style with a wide keyhole allows easy removal • The special foam cups give a smooth, seamless look • Mesh back panel to keep you dry during workouts
- Stretch cotton fabric that keeps you comfortable during workouts

Bras:



Black



Marble
Mauve
Print



Marble
Lock
Print



Pearl



Grapewine



Grey
Melange

Sizes - S, M, L, XL

SB18 (HIGH IMPACT BRA)

Padded • Wirefree • Full Coverage

CONVERTIBLE BACK

- Perforated foam cups for breathable hold, when you need to sweat it out • Ribbed bottom elastic to reduce friction and ensure better flexibility & hold • Cushioned hook and eye panel ensures no dig or hurt at back • Detachable straps for U-back or racer back
- Available upto DD cup size • Stay-dry fabric keeps you dry and fresh during workouts • Leotard back for no-slip straps • Back open for ease of wear

Bras:



Night
Shade



Lilac
Run



Black

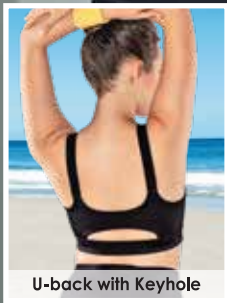


Grey
Melange

Sizes - B/C/D: 32-38 ; DD: 32-36



Criss-cross Back



U-back with Keyhole

SB25 (HIGH IMPACT BRA)

Padded • Wirefree • Full Coverage



Y-PANEL FOR BOUNCE CONTROL

- Y-panel hold for vertical bounce control
- Innovative Agion Fabric is eco-safe and gives powerful scent protection
- Detachable back allows you to switch from U-back to racer back
- Engineered mesh panels for superb lift and breathability control with flexibility
- Perfect density foam cup provides support, lift and apex coverage
- Wicking fabric to stay dry and comfortable all day
- Wide flexi-move fully adjustable straps for extended comfort
- Flexi-bottom hold
- Softer armhole finish
- Full coverage cup for extra support



Sizes - S, M, L, XL



Deep U-back

SB29 (HIGH IMPACT BRA)

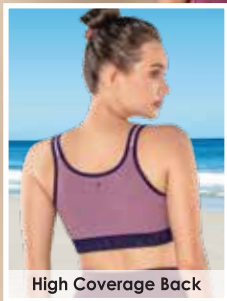
Padded • Wirefree • Full Coverage

FRONT OPEN BOUNCE CONTROL

- Front open, super grip convertible sports bra
- Extra high impact bra for an outstanding support
- No spill, no bounce, jiggle control with full coverage
- No show-through with perfect density foam cups
- Front zip ensures an easy wear, while the lock down feature keeps the zipper fixed
- Stay fresh and dry during workouts with wicking fabrics
- Versatile style with a cutout detail at the back for better breathability during workouts
- Detachable strap can be converted to racerback



Sizes - B/C: 32-38 ; D: 30-38 ; DD: 32-36



High Coverage Back

SB28 (MEDIUM IMPACT BRA)

Non-padded • Wirefree • High Coverage

SIDE SHAPER ACTIVE SPORTS BRA

- Trendy side shaper panels for a held-in look and side definition
- Antimicrobial plush absorbent layer for underbust sweat and no peak coverage
- Moulded cups for smooth rounded look
- Soft elastics for no pinch comfort
- Wide trendy bottom elastic for better support
- High back coverage for better hold all over

Bras:

		
Parafait Pink	Black	Grey Melange

Sizes - S, M, L, XL

SB06 (LOW IMPACT BRA)

Non-padded • Wirefree • High Coverage

METAL FREE POP-ON BRA

- Metal free pop-on bra that keeps you comfortable all day
- Double layer front for no show-through
- Moulded cups gives comfortable fit and shape with no lines
- Wider straps for no worry support and comfort
- Deep 'U' back and front helps to pair with many outerwear
- The keyhole at back ensures an easy wear
- Breathable cotton fabric for all day comfort

Bras:

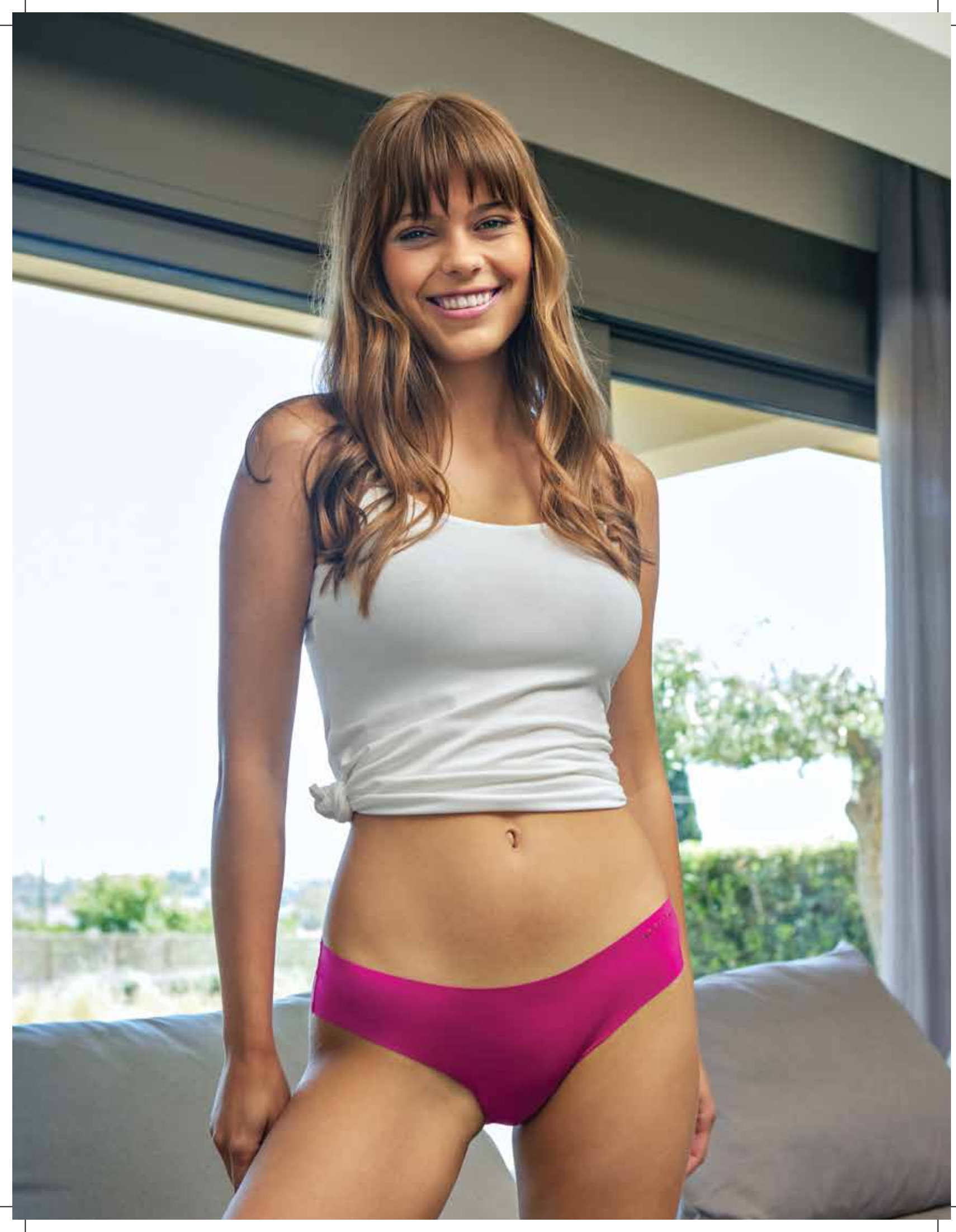
				
Tomato Melange	Marble Flake Print	Grey Melange	Ditsy Heart Print	Capri Melange
				
Grapewine	Skin	Pearl	White	Black

Sizes - XS, S, M, L, XL, XXL



Deep U-back





PANTIES



Experience comfort, style, and protection with our Panties collection, meticulously designed to elevate your everyday essentials. Explore a range of thoughtfully crafted designs that seamlessly blend functionality, elegance, and peace of mind, ensuring confidence with every wear.



**PS40 - BOYSHORTS
THE MODERN STARTER**

Pack of 1 / Mid Waist

NYLON ELASTANE

• **Fit:** Freedom fit • **Rear Coverage:** Full coverage for all day comfort • **Leg Opening:** Boy cut leg sits comfortably beyond the crease of your leg • **Waist:** Free cut • **Leg:** Free cut



Assorted sample colour

Size: S, M, L, XL, XXL

**PB40 - BIKINI
THE MODERN STARTER**

Pack of 1 / Low Waist

NYLON ELASTANE

• **Fit:** Freedom fit • **Rear Coverage:** Full coverage for all day comfort • **Leg Opening:** Low cut leg sits comfortably at the crease of your leg • **Waist:** Free cut • **Leg:** Free cut



Assorted sample colour

Size: S, M, L, XL, XXL

**PH40 - HIPSTER
THE MODERN STARTER**

Pack of 1 / Mid Waist

NYLON ELASTANE

• **Fit:** Freedom fit • **Rear Coverage:** Full coverage for all day comfort • **Leg Opening:** Low cut leg sits comfortably at the crease of your leg • **Waist:** Free cut • **Leg:** Free cut



Assorted sample colours - Solid

Size: S, M, L, XL, XXL



Assorted sample colours - Printed



**MS01 - BOYSHORTS
THE BASIC MODAL**

Pack of 1 / Mid Waist

MODAL SPANDEX

• **Fit:** Embrace fit • **Rear Coverage:** Provides excellent full coverage for all day comfort • **Leg Opening:** Boy cut leg sits comfortably beyond the crease of your leg • **Waist Elastic:** Outer satin edge elastic • **Leg Elastic:** Inner elastic



Assorted sample colour

Size: S, M, L, XL, XXL

**MB01 - BIKINI
THE BASIC MODAL**

Pack of 2 / Low Waist

MODAL SPANDEX

• **Fit:** Embrace fit • **Rear Coverage:** Provides excellent full coverage for all day comfort • **Leg Opening:** Low cut leg sits comfortably at the crease of your leg • **Waist Elastic:** Outer satin edge elastic • **Leg Elastic:** Inner elastic



Assorted sample colour

Size: S, M, L, XL, XXL

**MH01 - HIPSTER
THE BASIC MODAL**

Pack of 2 / Mid Waist

MODAL SPANDEX

• **Fit:** Embrace fit • **Rear Coverage:** Provides excellent full coverage for all day comfort • **Leg Opening:** Low cut leg sits comfortably at the crease of your leg • **Waist Elastic:** Outer satin edge elastic • **Leg Elastic:** Inner elastic



Assorted sample colour

Size: S, M, L, XL, XXL



**MH20 - HIPSTER
THE LACEY MODAL**

Pack of 2 / Mid Waist

MODAL SPANDEX

- **Fit:** Embrace fit • **Rear Coverage:** Provides excellent full coverage for all day comfort • **Leg Opening:** Low cut leg sits at the crease of your leg • **Waist:** Stretch lace



Assorted sample colour

Size: S, M, L, XL, XXL

**MB20 - BIKINI
THE LACEY MODAL**

Pack of 2 / Low Waist

MODAL SPANDEX

- **Fit:** Embrace fit • **Rear Coverage:** Provides excellent full coverage for all day comfort • **Leg Opening:** Low cut leg sits comfortably at the crease of your leg • **Waist:** Stretch lace • **Leg:** Stretch lace



Assorted sample colour

Size: S, M, L, XL, XXL



**CS01 - BOYSHORTS
THE CLASSIC MOD**

Pack of 1 / Mid Waist

COTTON SPANDEX

- **Fit:** Embrace fit • **Rear Coverage:** Provides excellent full coverage for all day comfort • **Leg Opening:** Boy cut leg sits comfortably beyond the crease of your leg
- **Waist Elastic:** Outer flat elastic • **Leg Elastic:** Outer flat elastic



Assorted sample colour

Size: S, M, L, XL, XXL

**CH06 - HIPSTER (Solid)
THE FRENCH BRIEF**

Pack of 2 / Mid Waist

COTTON SPANDEX

- **Fit:** Embrace fit • **Rear Coverage:** Provides excellent full coverage for all day comfort • **Leg Opening:** Stylized high cut leg sits above the crease of your leg
- **Waist:** Flat stretch lace • **Leg Elastic:** Outer flat elastic



Assorted sample colour

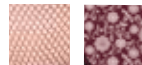
Size: S, M, L, XL, XXL

**CH06 - HIPSTER (Print)
THE FRENCH BRIEF**

Pack of 2 / Mid Waist

COTTON SPANDEX

- **Fit:** Embrace fit • **Rear Coverage:** Provides excellent full coverage for all day comfort • **Leg Opening:** Stylized high cut leg sits above the crease of your leg
- **Waist:** Flat stretch lace • **Leg Elastic:** Outer flat elastic



Printed assorted sample colour

Size: S, M, L, XL, XXL



**CB01 - BIKINI (Print)
THE CLASSIC MOD**

Pack of 3 / Low Waist

COTTON SPANDEX

• **Fit:** Embrace fit • **Rear Coverage:** Provides excellent full coverage for all day comfort • **Leg Opening:** Low cut leg sits comfortably at the crease of your leg • **Waist Elastic:** Outer flat elastic • **Leg Elastic:** Outer flat elastic



**Printed + Solid
assorted sample colour**

Size: S, M, L, XL, XXL

**CB03 - BIKINI (Print)
THE COTTON CLASSIC**

Pack of 3 / Low Waist

100% COTTON

• **Fit:** Grip fit • **Rear Coverage:** Provides excellent full coverage for all day comfort • **Leg Opening:** Low cut leg sits comfortably at the crease of your leg • **Waist Elastic:** Inner elastic • **Leg Elastic:** Inner elastic



Printed assorted sample colour

Size: S, M, L, XL, XXL

**CB01 - BIKINI (Solid)
THE CLASSIC MOD**

Pack of 3 / Low Waist

COTTON SPANDEX

• **Fit:** Embrace fit • **Rear Coverage:** Provides excellent full coverage for all day comfort • **Leg Opening:** Low cut leg sits comfortably at the crease of your leg • **Waist Elastic:** Outer flat elastic • **Leg Elastic:** Outer flat elastic



Assorted sample colour

Size: S, M, L, XL, XXL



**CB03 - BIKINI (Solid)
THE COTTON
CLASSIC**

Pack of 3 / Low Waist

100% COTTON

• **Fit:** Grip fit • **Rear Coverage:** Provides excellent full coverage for all day comfort • **Leg Opening:** Low cut leg sits comfortably at the crease of your leg • **Waist Elastic:** Inner elastic • **Leg Elastic :** Inner elastic



Assorted sample colour

Size: S, M, L, XL, XXL

**CR01 - BIKINI (Solid)
THE BRANDED
STRETCH C**

Pack of 3 / Low Waist

COTTON SPANDEX

• **Fit:** Grip fit • **Rear Coverage:** Provides excellent full coverage for all day comfort • **Leg Opening:** Low cut leg sits comfortably at the crease of your leg • **Waist Elastic:** Outer jacquard elastic • **Leg Elastic:** Outer flat elastic



Assorted sample colour

Size: S, M, L, XL, XXL

**CR01 - BIKINI (Print)
THE BRANDED STRETCH C**

Pack of 3 / Low Waist

COTTON SPANDEX

• **Fit:** Grip fit • **Rear Coverage:** Provides excellent full coverage for all day comfort • **Leg Opening:** Low cut leg sits comfortably at the crease of your leg • **Waist Elastic:** Outer jacquard elastic • **Leg Elastic:** Outer flat elastic



Printed assorted sample colour



**CH01 - HIPSTER (Print)
THE CLASSIC MOD**

Pack of 3 / Mid Waist

COTTON SPANDEX

- **Fit:** Embrace fit • **Rear Coverage:** Provides excellent full coverage for all day comfort • **Leg Opening:** Low cut leg sits comfortably at the crease of your leg
- **Waist Elastic:** Outer flat elastic • **Leg Elastic:** Outer flat elastic



Printed + Solid assorted sample colour

Size: S, M, L, XL, XXL

**CH03 - HIPSTER (Print)
THE COTTON CLASSIC**

Pack of 3 / Mid Waist

100% COTTON

- **Fit:** Grip fit • **Rear Coverage:** Provides excellent full coverage for all day comfort
- **Leg Opening:** Low cut leg sits comfortably at the crease of your leg • **Waist Elastic:** Inner elastic • **Leg Elastic:** Inner elastic



Printed assorted sample colour

Size: S, M, L, XL, XXL

**CH01 - HIPSTER (Solid)
THE CLASSIC MOD**

Pack of 3 / Mid Waist

COTTON SPANDEX

- **Fit:** Embrace fit • **Rear Coverage:** Provides excellent full coverage for all day comfort • **Leg Opening:** Low cut leg sits comfortably at the crease of your leg • **Waist Elastic:** Outer flat elastic • **Leg Elastic:** Outer flat elastic



Assorted sample colour

Size: S, M, L, XL, XXL



**CH03 - HIPSTER (Solid)
THE COTTON CLASSIC**

Pack of 3 / Mid Waist

100% COTTON

- **Fit:** Grip fit • **Rear Coverage:** Provides excellent full coverage for all day comfort
- **Leg Opening:** Low cut leg sits comfortably at the crease of your leg
- **Waist Elastic:** Inner elastic
- **Leg Elastic:** Inner elastic



Assorted sample colour

Size: S, M, L, XL, XXL

**CR02 - HIPSTER (Solid)
THE BRANDED
STRETCH C**

Pack of 3 / Mid Waist

100% COTTON

- **Fit:** Grip fit • **Rear Coverage:** Provides excellent full coverage for all day comfort
- **Leg Opening:** Low cut leg sits comfortably at the crease of your leg
- **Waist Elastic:** Outer jacquard elastic
- **Leg Elastic:** Outer flat elastic



Assorted sample colour

Size: S, M, L, XL, XXL

**CR02 - HIPSTER (Print)
THE BRANDED STRETCH C**

Pack of 3 / Mid Waist

COTTON SPANDEX

- **Fit:** Grip fit • **Rear Coverage:** Provides excellent full coverage for all day comfort
- **Leg Opening:** Low cut leg sits comfortably at the crease of your leg
- **Waist Elastic:** Outer jacquard elastic
- **Leg Elastic:** Outer flat elastic



Printed + Solid assorted sample colour

Size: S, M, L, XL, XXL

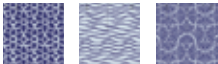


**CR17 - HIPSTER (Print)
THE STRETCH COTTON**

Pack of 3 / Mid Waist

COTTON SPANDEX

- **Fit:** Grip fit • **Rear Coverage:** Provides excellent full coverage for all day comfort • **Leg Opening:** Low cut leg sits comfortably at the crease of your leg
- **Waist Elastic:** Inner elastic
- **Leg Elastic:** Inner elastic



Printed assorted sample colour

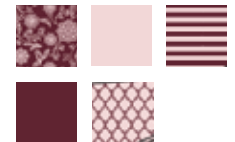
Size: S, M, L, XL, XXL

**CH05 - HIPSTER (Print)
THE CLASSIC MOD**

Pack of 5 / Mid Waist

COTTON SPANDEX

- **Fit:** Embrace fit • **Rear Coverage:** Provides excellent full coverage for all day comfort • **Leg Opening:** Low cut leg sits comfortably at the crease of your leg
- **Waist Elastic:** Outer flat elastic • **Leg Elastic:** Outer flat elastic



Printed + Solid assorted sample colour

Size: S, M, L, XL, XXL

**CR17 - HIPSTER (Solid)
THE STRETCH COTTON**

Pack of 3 / Mid Waist

COTTON SPANDEX

- **Fit:** Grip fit • **Rear Coverage:** Provides excellent full coverage for all day comfort • **Leg Opening:** Low cut leg sits comfortably at the crease of your leg
- **Waist Elastic:** Inner elastic • **Leg Elastic:** Inner elastic



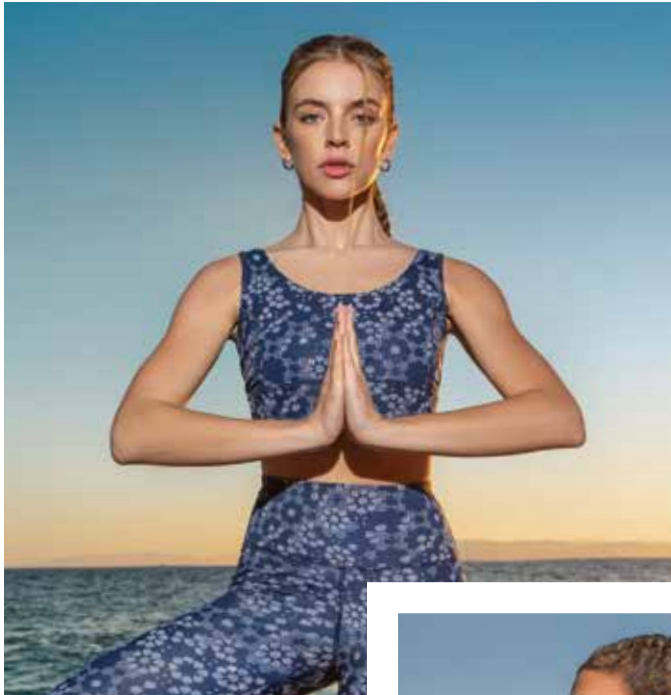
Printed assorted sample colour

Size: S, M, L, XL, XXL





ATHLEISURE

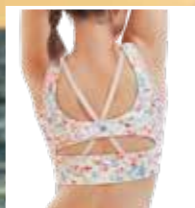


Elevate your active lifestyle with seamless style and functionality, offering a chic workout experience that effortlessly transitions from fitness to casual outings or creates the perfect airport look for a comfortable on-the-go lifestyle.

new



Front View



Criss-cross Back

A204 - PRINTED SPORTS BRA

Held-in Fit | Crop Length

Why We Love It!

- Fabric: Quick dry 4-way stretch soft polyester fabric with added spandex for shape retention. Antimicrobial finish to control odour causing bacteria
- Detail 1: Long length sports bra provides increased coverage like a cropped length top
- Detail 2: Strategically patterned princess seams that gives natural shape for your bust
- Detail 3: Cutaway back detail for better ventilation and comfort
- Detail 4: Non-bulky smooth wide bottom band to avoid constrict and digging in. Engineered to soften bounce & provide support
- Detail 5: Higher neckline gives ample cleavage coverage to workout comfortably
- Detail 6: Intended to provide medium to high support for running, power yoga & gym training
- Detail 7: Removable padding for better hygiene and modesty

TAKE YOUR PICK



Painted Flowers with Pastel Green Combo



Halftone Medieval Blue Combo

Sizes : S, M, L, XL, XXL



Engineered perforation at the back for ventilation

A202 - BASIC WORKOUT SPORTS BRA

Held-in Fit (Medium Support) | Crop Length

Why We Love It!

- Fabric: Quick dry, 4-way stretch butter soft stretch polyester fabric with added spandex for shape retention. Anti-microbial finish controls odor causing bacteria and keeps you fresh
- Detail 1: Long length sports bra provides increased coverage like a crop length top
- Detail 2: Engineered mesh panel at back for added ventilation
- Detail 3: Non-bulky smooth wide bottom band won't constrict or dig-in
- Detail 4: Engineered to soften bounce & provide support
- Detail 5: Crew neckline gives ample cleavage coverage to workout comfortably
- Detail 6: Intended to provide medium support for running, power yoga, gym training
- Detail 7: Removable padding for better hygiene and modesty

TAKE YOUR PICK



Chinese Violet



Rouge



Olive Green



Navy

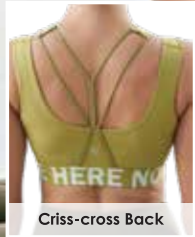


Goblin Blue



Jet Black

Sizes : XS, S, M, L, XL, XXL



A201 - ACTIVE ENERGY SPORTS BRA
Held-in Fit | Crop Length

Why We Love It!

- Fabric: Quick dry 4-way butter soft stretch polyester jersey fabric, with antimicrobial finish controls odor causing bacteria. Added spandex for shape retention
- Detail 1: High support sports bra provides ample support and bounce control
- Detail 2: Longer length sports bra provides increased coverage like a crop length top
- Detail 3: Built-in perforated cups are super breathable & gives a natural shape to your bust
- Detail 4: Breathable mesh outer layer styled for increased coverage
- Detail 5: Brushed elastic super soft bottom band won't constrict or dig in engineered to soften bounce & provide support
- Detail 6: Smart novelty criss-cross back detail

TAKE YOUR PICK



Sizes : S, M, L, XL, XXL

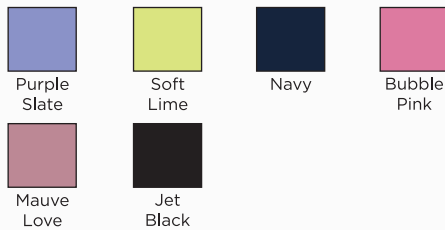


E117 - Longline Sports Bra (Solid)
Held-in Fit | Crop Length

Why We Love It!

- Fabric: Quick dry 4-way stretch butter soft polyester fabric with antimicrobial finish controls odour causing bacteria. Added spandex for shape retention
- Detail 1: Long length sports bra provides increased coverage like a crop length top
- Detail 2: Princess seam pattern provides natural shape for your bust
- Detail 3: Cutaway back detail to keep you dry & comfortable
- Detail 4: Smooth wide bottom band is engineered to soften bounce and provide support without digging into your skin
- Detail 5: Higher neckline gives ample cleavage coverage to workout comfortably
- Detail 6: Provides medium to high support for activities like running, power yoga or gym training
- Detail 7: Comes with removable pads for better hygiene and modesty

TAKE YOUR PICK



Sizes : S, M, L, XL, XXL



Front View

E217 - Longline Sports Bra (Printed) Held-in Fit | Crop Length

Why We Love It!

- Fabric: Quick dry 4-way stretch butter soft polyester fabric with antimicrobial finish controls odour causing bacteria. Added spandex for shape retention
- Detail 1: Long length sports bra provides increased coverage like a crop length top
- Detail 2: Princess seam pattern provides natural shape for your bust
- Detail 3: Cutaway back detail to keep you dry & comfortable
- Detail 4: Smooth wide bottom band is engineered to soften bounce and provide support without digging into your skin
- Detail 5: Higher neckline gives ample cleavage coverage to workout comfortably
- Detail 6: Provides medium to high support for activities like running, power yoga or gym training
- Detail 7: Comes with removable pads for better hygiene and modesty

TAKE YOUR PICK



Sizes : S, M, L, XL, XXL



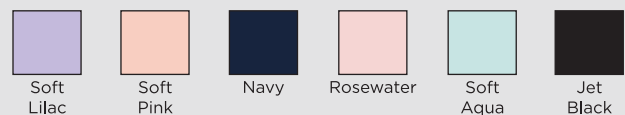
Mesh Panel for Ventilation

E121 - Racer Longline Sports Bra Held-in Fit | Crop Length

Why We Love It!

- Fabric: Quick dry 4-way stretch butter soft polyester fabric with antimicrobial finish controls odour causing bacteria. Added spandex for shape retention
- Detail 1: Long length sports bra provides increased coverage like a crop length top
- Detail 2: Princess seam pattern provides natural shape for your bust
- Detail 3: Engineered mesh panel at back & front for added ventilation
- Detail 4: Smooth wide bottom band is engineered to soften bounce and provide support without digging into your skin
- Detail 5: Crew neckline gives ample cleavage coverage to workout comfortably
- Detail 6: Provides medium to high support for activities like running, power yoga or gym training
- Detail 7: Comes with removable pads for better hygiene and modesty

TAKE YOUR PICK



Sizes : S, M, L, XL, XXL



Racer Back With Reflective Graphic










Side Slit for Ease of Movement

A308 - Basic Workout Tank
Slim Fit | Regular Length

Why We Love It!

- Fabric: Quick dry 4-way stretch polyester jersey with anti-microbial finish controls odour causing bacteria keeping you fresh all day
- Detail 1: Racer back detail allows free shoulder movement
- Detail 2: Reflective active graphic

TAKE YOUR PICK

			
Pastel Turquoise Melange with Graphic	Pink Cyclamen Melange with Graphic	Pink Taffy Melange with Graphic	Sunset Purple Melange with Graphic
			
Navy Melange with Graphic	Olive Melange with Graphic	Black Melange with Graphic	

Sizes : S, M, L, XL, XXL

E133 - Stay Cool Tank
Relaxed Fit | Regular Length

Why We Love It!

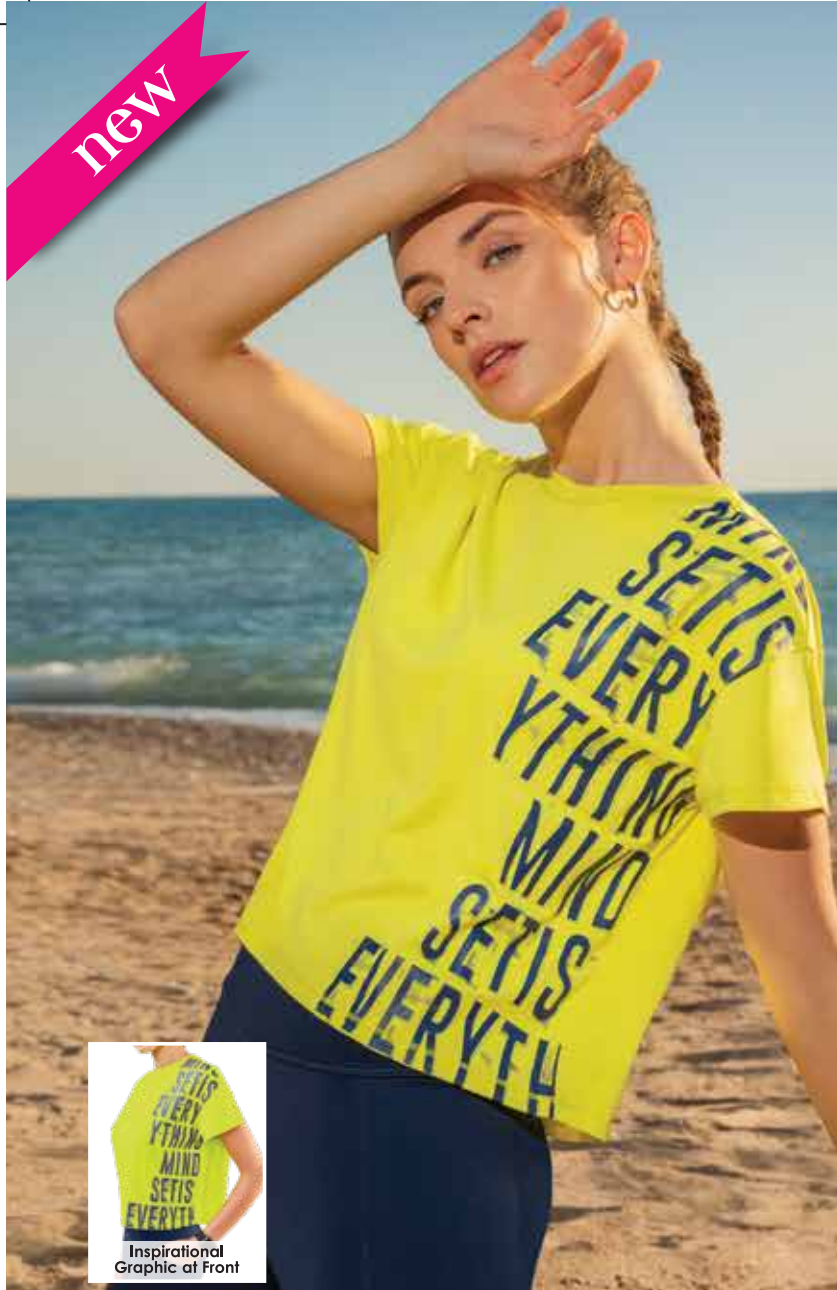
- Fabric: Breathable, super soft 4-way stretch cotton jersey fabric with anti-odour technology controls odour causing bacteria keeping you fresh all day
- Detail 1: A basic wardrobe layering staple for yoga, gym and all other active pursuits
- Detail 2: Designed to provide comfortable high coverage to underarm bulge's
- Detail 3: Side slits for ease of movement
- Detail 4: Mindful graphic with foil printing inspires positivity

TAKE YOUR PICK

			
Deep Teal with Graphic	Candy Red with Graphic	Jet Black with Graphic	Jet Black with Graphic

Sizes : S, M, L, XL, XXL

new



Inspirational Graphic at Front

A311 - CROP GRAPHIC TEE
Oversized Fit | Cropped Length

Why We Love It!

- Fabric: 100% polyester interlock
- Detail 1: Cropped length t-shirt
- Detail 2: Inspirational graphic at front body
- Detail 3: Classic roomy relaxed fit for unimaginable comfort

TAKE YOUR PICK

 	 	 	 
Cyber Lime with Mindset Graphic	Chinese Violet with Mindset Graphic	Marshmallow with Focus Graphic	Jet Black with Focus Graphic

Sizes : S, M, L, XL, XXL



Back Mesh Panel

A305 - Active Stay Fresh Tee
Relaxed Fit | Hip Length

Why We Love It!

- Fabric: Breathable 4-way super soft stretch cotton jersey fabric, with antimicrobial finish controls odour causing bacteria and keeps you fresh all day. Added spandex for stretch and shape retention
- Detail 1: Made with special finish that prevents body odour
- Detail 2: Maximum comfort fitted with a long length
- Detail 3: Perfect to pair with our dry fit leggings
- Detail 4: Engineered sporty mesh panels for breathability keeps you cool
- Detail 5: Mindful graphics to inspire positivity

TAKE YOUR PICK

					
Soft Pink with Graphic	Mauve Love with Graphic	Soft Lime with Graphic	Soft Lilac with Graphic	Robin with Graphic	Jet Black with Graphic
					
Rosewater with Graphic	Thai Green with Graphic	Purple Slate with Graphic	Soft Aqua with Graphic	Jet Black with Graphic	

Sizes : S, M, L, XL, XXL








E089 - Slim Active Tee
Slim Fit | Regular Length

Why We Love It!

- Fabric: Lightweight, quick dry 4-way stretch brushed jersey fabric with antimicrobial finish controls odour causing bacteria. Added spandex for stretch and shape retention
- Detail 1: A basic active wardrobe staple for your active pursuits
- Detail 2: Short raglan sleeve with reflective graphic on the back
- Detail 3: Flat seam for better shape retention and comfortable fit

TAKE YOUR PICK

		
Chinese Violet Melange with Matrix Reflective Graphic	Gull Grey Melange with Matrix Reflective Graphic	Living Coral Melange with Matrix Reflective Graphic
		
Cornflower Blue Melange with Matrix Reflective Graphic	Black Melange with Matrix Reflective Graphic	

Sizes : S, M, L, XL, XXL



E131 - Meditate Tee
Relaxed Fit | Hip Length

Why We Love It!

- Fabric: Breathable, super soft 4-way stretch cotton jersey fabric with anti-odour technology controls odour causing bacteria keeping you fresh all day
- Detail 1: Maximum comfort fit tee designed for your post workout activities
- Detail 2: Mindful graphics to inspire positivity
- Detail 3: Long length tee offers comfortable hip coverage

TAKE YOUR PICK

			
Candy Red with Graphic	Blue Turquoise with Graphic	Soft Lilac with Graphic	Bubble Pink with Graphic
			
Pale Fern with Graphic	Lemon Cream with Graphic	Maive Grey with Graphic	Chalky Violet with Graphic
			
Rosewater with Graphic	Jet Black with Graphic	Jet Black with Graphic	

Sizes : S, M, L, XL, XXL

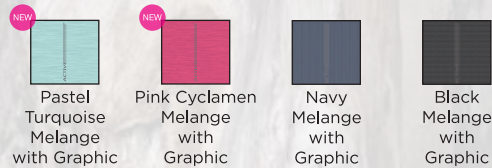


A309 - Basic Workout Crew Tee
Relaxed Fit | Regular Length

Why We Love It!

- Fabric: Quick dry 4-way stretch polyester jersey with anti-microbial finish controls odour causing bacteria keeping you fresh all day
- Detail 1: Regular length dry fit crew neck with short sleeve
- Detail 2: Reflective active graphic

TAKE YOUR PICK



Sizes : S, M, L, XL, XXL



Side Slit

A301 - ACTIVE COTTON TEE
Relaxed Fit | Regular Length

Why We Love It!

- Fabric: Super soft 4-way stretch breathable cotton jersey fabric with anti-odour technology controls odour causing bacteria keeping you fresh all day
- Detail 1: Must have short sleeve cotton tee for yoga, gym and all other active pursuits
- Detail 2: Side slits for ease of movement
- Detail 3: Mindful graphic inspires positivity

TAKE YOUR PICK



Sizes : S, M, L, XL, XXL



Side Slits for Ease of Movement



Long Length for Hip Coverage

A3S1 - Active Cotton Tee
Relaxed Fit | Regular Length

Why We Love It!

- Fabric: Super soft 4-way stretch breathable cotton jersey fabric with anti-odour technology controls odour causing bacteria keeping you fresh all day
- Detail 1: Must have short sleeve cotton tee for yoga, gym and all other active pursuits
- Detail 2: Side slits for ease of movement
- Detail 3: Mindful graphic inspires positivity

TAKE YOUR PICK



Sizes : S, M, L, XL, XXL

E163 - Basic Active Tee
Relaxed Fit | Hip Length

Why We Love It!

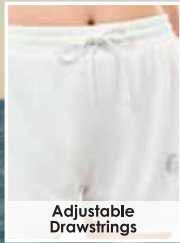
- Fabric: Quick dry 4-way stretch jersey fabric with antimicrobial finish controls odour causing bacteria. Added spandex for stretch and shape retention
- Detail 1: Long length tee offers comfortable hip coverage
- Detail 2: Engineered flat seams for shape retention & durability
- Detail 3: Forward side seams give you a slim look
- Detail 4: Mindful graphic inspires positivity

TAKE YOUR PICK



Sizes : S, M, L, XL, XXL

new



Adjustable Drawstrings



Functional Hip Pocket is at Wearer's Right

A705 - MESH DUO SHORTS

Relaxed Fit Outerwear | Hugged Fit Innerwear | Mid-Thigh Length

Why We Love It!

- Fabric: Quick dry 4-way stretch breathable mesh with added spandex for shape retention. Antimicrobial finish to control odour causing bacteria. Inner Layer: Quick dry 4-way stretch soft polyester fabric with added spandex for shape retention. Antimicrobial finish to control odour causing bacteria and keeps you fresh all day
- Detail 1: Designed for comfort as you move - workout at gym, run or relax
- Detail 2: Wide waistband with adjustable drawstring
- Detail 3: Functional hip pocket at wearer's right
- Detail 4: Built in cycling tights gives hugged fit & more coverage
- Detail 5: Relaxed fit breathable power mesh outer layer so you can move freely
- Detail 5: Graphic at wearer's left

TAKE YOUR PICK



Sizes : S, M, L, XL, XXL



Side Pockets

A704 - BASIC WORKOUT SHORTS

Relaxed Fit | Mid Rise | Mid Thigh Length

Why We Love It!

- Fabric: Lightweight quick dry 4-way stretch brushed jersey, added spandex for stretch & shape retention with anti-microbial finish controls odor causing bacteria and keeps you fresh all day
- Detail 1: Designed this thigh length active shorts to give dry fit smart comfort
- Detail 2: Mid rise waistband with adjustable drawstring
- Detail 3: Two functional pockets for your essentials

TAKE YOUR PICK



Sizes : S, M, L, XL, XXL



Stretch rib waistband with Adjustable Drawstrings and Side Pockets



Side Slits



High Rise Waistband with Adjustable Drawstring



Stylised Power Mesh Panel Design and Reflective Graphic

A702 - Active Shorts
Relaxed Fit | Mid Rise | Knee-Length

Why We Love It!

- Fabric: Lightweight, quick dry 4-way stretch brushed jersey fabric with antimicrobial finish controls odour causing bacteria. Added spandex for stretch and shape retention
- Detail 1: Designed to give you dry fit smart comfort
- Detail 2: Micro stretch rib waistband with adjustable drawstring
- Detail 3: Two functional pockets for your essentials

TAKE YOUR PICK



Army Green Melange Navy Melange

Sizes : S, M, L, XL, XXL

A501 - Active Capri Legging
Hugged Fit | High Waist | Capri Length

Why We Love It!

- Fabric: Quick dry 4-way stretch butter soft polyester fabric with antimicrobial finish controls odour causing bacteria. Added spandex for shape retention
- Detail 1: Engineered flat seam technology for shape retention and comfortable bulk free seams
- Detail 2: High rise wide support waistband with adjustable elastic drawstring prevents from slipping down during high impact workouts
- Detail 3: Super functional hip pockets for your essentials
- Detail 4: Strategically designed and mapped seams to make you look and feel slimmer
- Detail 5: Stylised power mesh side panels
- Detail 6: Reflective graphic at leg opening

TAKE YOUR PICK



Olive Night with Graphic Dry Blood with Graphic Navy with Graphic Deep Teal with Graphic Plum with Graphic Jet Black with Graphic

Sizes : S, M, L, XL, XXL

new



Functional Hip Pocket



Adjustable Drawstring

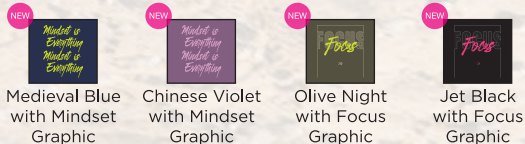
A606 - Calm Legging

Hugged Fit | 7/8 Length

Why We Love It!

- Fabric: Quick dry 4-way stretch soft polyester fabric with spandex for shape retention and antimicrobial finish to control odour causing bacteria
- Detail 1: 7/8 length sits above the ankle
- Detail 2: High rise wide support waistband with adjustable drawstring
- Detail 3: Engineered flat lock construction for shape retention & comfortable bulk free seams
- Detail 4: Functional hip pockets for your essentials like mobile, keys or credit card
- Detail 5: Inspirational graphic at wearer's left leg

TAKE YOUR PICK



Sizes : S, M, L, XL, XXL

new



Concealed Back Pocket

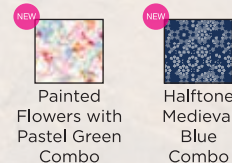
A607 - Printed Legging

Hugged Fit | 7/8 Length

Why We Love It!

- Fabric: Quick dry 4-way stretch soft polyester fabric with added spandex for shape retention. Antimicrobial finish to control odour causing bacteria
- Detail 1: 7/8 length sits above the ankle
- Detail 2: High rise wide support waistband with elastic to adjust waist and prevent any slipping while running
- Detail 3: Engineered flat lock construction for shape retention & comfortable bulk free seams
- Detail 4: Concealed back pocket on waistband for your mobile or credit card

TAKE YOUR PICK



Sizes : S, M, L, XL, XXL



High Rise Waistband with Adjustable Drawstring

A601 - Active Cottony Legging

Hugged Fit | High Waist | 7/8 Length

Why We Love It!

- Fabric: Quick dry 4-way stretch cotton handfeel nylon fabric with antimicrobial finish controls odour causing bacteria. Added spandex for shape retention
- Detail 1: Designed with the finest supplex nylon fabrication which lends a cotton hand feel in addition to adequate support for hips
- Detail 2: High waist support with adjustable drawstring
- Detail 3: Hip pockets to keep your essentials
- Detail 4: Mitered power mesh panel inserts on legs lends a sporty chic design element
- Detail 5: Engineered flat seam construction for shape retention and comfortable bulk free seams
- Detail 6: Reflective graphic at leg opening

TAKE YOUR PICK



Sizes : S, M, L, XL, XXL



Hip Pockets



Adjustable Drawstring

A602 - ACTIVE SOLO LEGGING

Hugged Fit | High Waist | 7/8 Length

Why We Love It!

- Fabric: Quick dry 4-way butter soft stretch polyester jersey fabric, with antimicrobial finish controls odor causing bacteria. Added spandex for shape retention
- Detail 1: 7/8 length sits above the ankle
- Detail 2: High rise wide support waistband with adjustable elastic drawstring to prevent slippage while running
- Detail 3: Smart engineered asymmetric color blocking
- Detail 4: Engineered flat seam construction for shape retention & comfortable bulk free seams
- Detail 5: Functional hip pocket for your essentials like mobile, keys or credit card to be handsfree

TAKE YOUR PICK



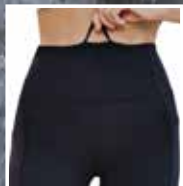
Sizes : S, M, L, XL, XXL



Mesh Vent Detail



Hip Pockets



High Rise Waistband with Adjustable Drawstring



High Rise Waistband with Adjustable Drawstring



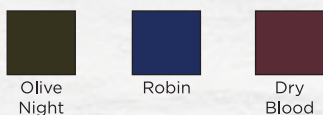
Back Concealed Pocket

A603 - ACTIVE BALANCE LEGGING
Held-in Fit | High Waist | 7/8 Length

Why We Love It!

- Fabric: Quick dry 4-way butter soft stretch polyester jersey fabric, with antimicrobial finish controls odor causing bacteria. Added spandex for shape retention
- Detail 1: 7/8 length sits above the ankle
- Detail 2: High rise wide support waistband with adjustable elastic drawstring to prevent slippage while running
- Detail 3: Strategically designed seams mapped to sculpt your body giving your butt & thighs a smooth & comfortable support
- Detail 4: Engineered flat seam construction for shape retention & comfortable bulk free seams
- Detail 5: Super functional hip pockets for your essentials like mobile, keys or credit card to be handsfree
- Detail 6: Mesh vent detailing at back leg

TAKE YOUR PICK



Sizes : S, M, L, XL, XXL

E040 - Hugged Legging-I (All Over Print)
Hugged Fit | High Rise | 7/8 Length

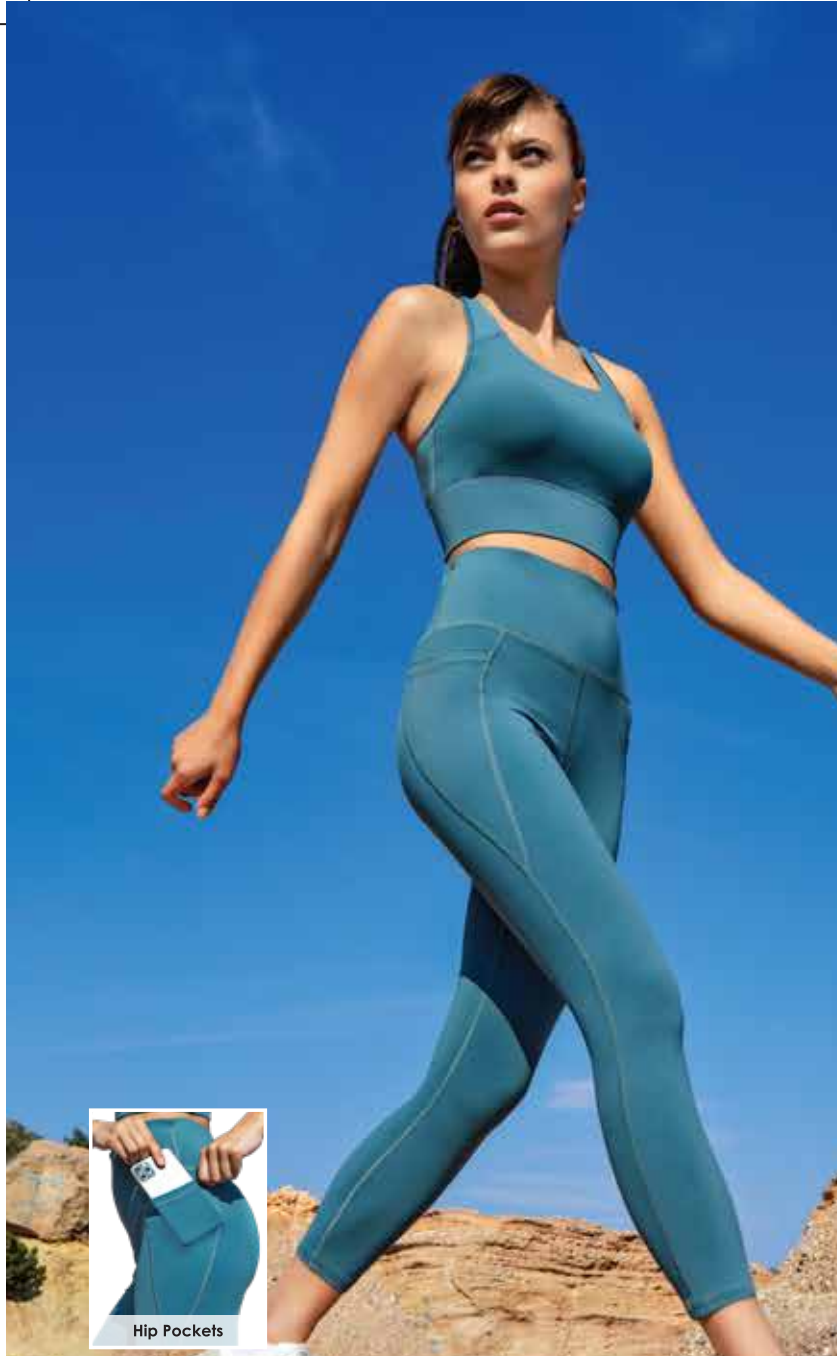
Why We Love It!

- Fabric: Quick dry 4-way stretch butter soft polyester fabric with antimicrobial finish controls odour causing bacteria. Added spandex for shape retention
- Detail 1: 7/8 length sits above the ankle
- Detail 2: High rise wide waistband with continuous adjustable elastic helps customize the fit to your comfort
- Detail 3: Engineered flat seam for shape retention
- Detail 4: Concealed back pocket on waistband to keep your essentials

TAKE YOUR PICK



Sizes : S, M, L, XL, XXL



Hip Pockets



Side Pockets



Mid Rise Waistband with Adjustable Drawstring

A605 - Basic Workout Legging
Hugged Fit | High Rise | 7/8 Length

Why We Love It!

- Fabric: Quick dry, 4-way stretch butter soft stretch polyester fabric with added spandex for shape retention. Antimicrobial finish controls odor causing bacteria and keeps you fresh.
- Detail 1: 7/8 Length sits above the ankle
- Detail 2: High rise wide support waistband with adjustable elastic drawstring to prevent slippage while running
- Detail 3: Engineered flat seam construction for shape retention & comfortable bulk free seams
- Detail 4: Super functional hip pockets for your essentials like mobile, keys or credit cards

TAKE YOUR PICK



Sizes : S, M, L, XL, XXL

E076 - Active Jogger
Hugged Fit | Mid Rise | 7/8 Length

Why We Love It!

- Fabric: Quick dry 4-way stretch butter soft polyester fabric with antimicrobial finish and anti-odour technology. Added spandex for shape retention
- Detail 1: Stretch rib waistband & leg cuff to maximise comfort & style
- Detail 2: Concealed adjustable drawstring to customize the fit to your comfort
- Detail 3: 2 functional pockets to keep your essential

TAKE YOUR PICK



Sizes : S, M, L, XL, XXL



7/8 Length



Boot Cut Bttom



Hip Pockets

E068 - Travel Pant
Hugged Fit | High Rise | 7/8 Length

Why We Love It!

- Fabric: Quick dry 4-way stretch butter soft polyester fabric with antimicrobial finish controls odour causing bacteria. Added spandex for shape retention
- Detail 1: Super soft elasticated flat waistband
- Detail 2: Adjustable drawstring to customize the fit to your comfort
- Detail 3: 2 functional pockets to keep your essentials

TAKE YOUR PICK



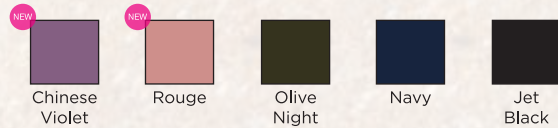
Sizes : S, M, L, XL, XXL

A402 - BOOT CUT ACTIVE PANT
Relaxed Fit | High Rise | Regular Length

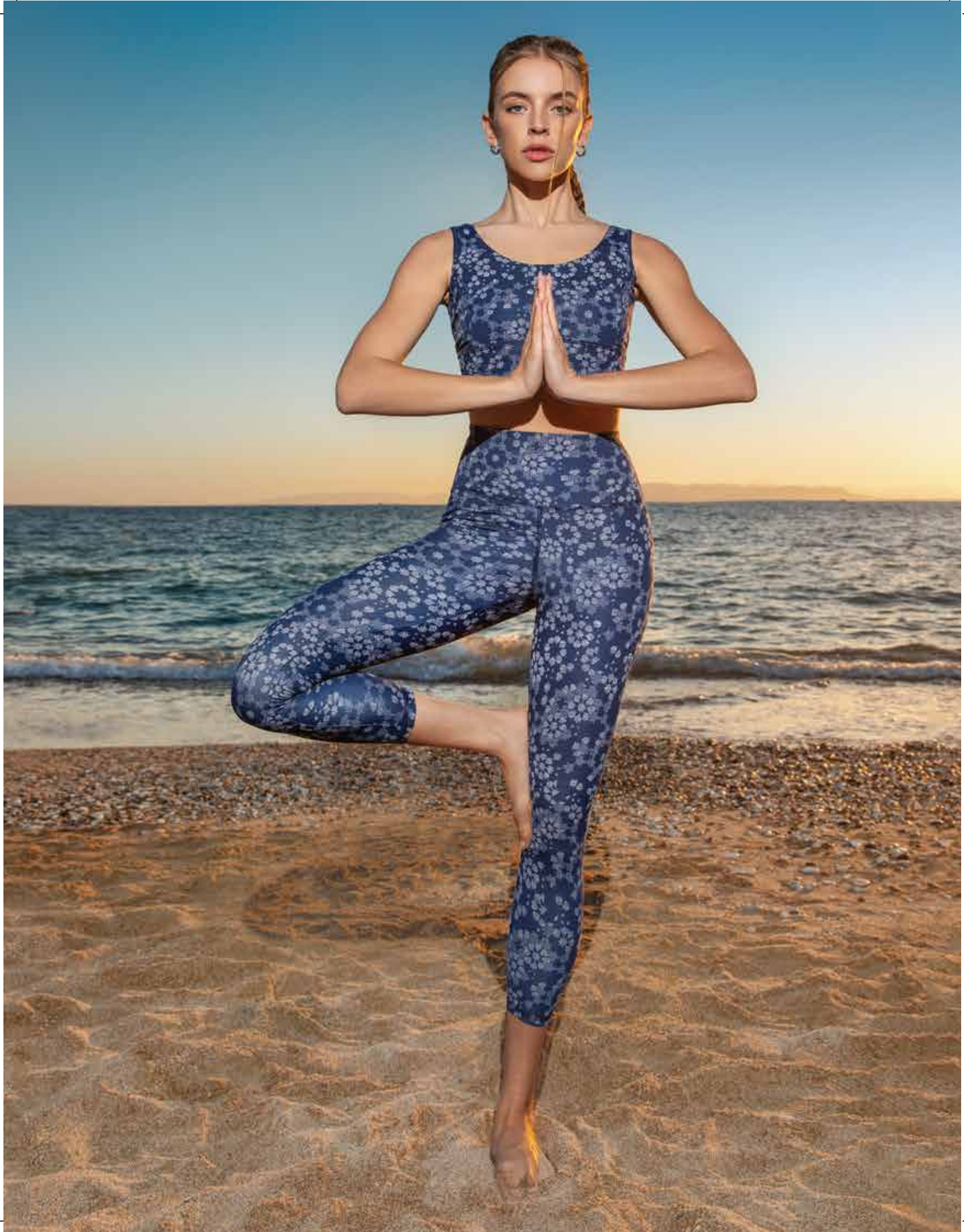
Why We Love It!

- Fabric: Quick dry, 4-way stretch butter soft stretch polyester fabric with added spandex for shape retention. Antimicrobial finish controls odor causing bacteria and keeps you fresh.
- Detail 1: Regular length boot cut pant
- Detail 2: High rise wide support waistband with adjustable elastic drawstring to prevent slippage while running
- Detail 3: Engineered flat seam construction for shape retention & comfortable bulk free seams
- Detail 4: Functional hip pockets for your essentials like mobile, keys or credit cards
- Detail 5: Wide leg opening for better comfort

TAKE YOUR PICK



Sizes : S, M, L, XL, XXL



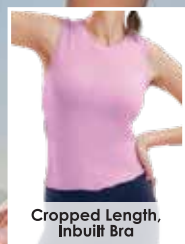


ESSENTIALS



Discover timeless comfort and versatile style with Enamor Essentials, where everyday basics are elevated to redefine your wardrobe essentials.

new



Cropped Length, Inbuilt Bra

E310 - Crop Top Slim Fit | Cropped Length

Why We Love It!

- Fabric: 2x1 cotton spandex rib
- Detail 1: Designed to give you the feeling of freedom from constricting bras
- Detail 2: In-built shelf bra with super soft brushed elastic that feels gentle on the skin & does not dig in
- Detail 3: Crew neckline gives ample cleavage coverage to workout comfortably
- Detail 4: Intended to provide light support for lounge in comfortably
- Detail 5: Removable padding for better hygiene and modesty

TAKE YOUR PICK



Sizes : S, M, L, XL, XXL

new



High Low Detail at Bottom Hem

E3S5 - High Low Tee Stripe Relaxed Fit | Regular Length

Why We Love It!

- Fabric: Soft & naturally breathable stretch cotton jersey
- Detail 1: Stretch rib neck band
- Detail 2: High low detail at the bottom hem
- Detail 3: Available in printed stripes

TAKE YOUR PICK



Sizes : S, M, L, XL, XXL

new



Cut and Sew Details

E306 - Basic Cut And Sew Tee
Relaxed Fit | Regular Length

Why We Love It!

- Fabric: Soft & naturally breathable stretch cotton jersey
- Detail 1: Stretch rib neck band
- Detail 2: Contrast color shoulder panel for a fashionable look and better fit
- Detail 3: Available in solids and combination of solid & melange

TAKE YOUR PICK



Medium Grey Melange/Black



Elemental Blue Melange/Elemental Blue



Rouge Melange/Rouge



Dull Forest Melange/Dull Forest

Sizes : S, M, L, XL, XXL



E147 - Basic Crew Tee (Graphic Print)
Slim Fit | Regular Length

Why We Love It!

- Fabric: Soft & naturally breathable stretch cotton jersey
- Detail 1: Stretch rib neck band with dyed to match cover stitch detail for a sporty look
- Detail 2: Available in solids, melanges, yarn dye stripes, graphic prints and all over prints

TAKE YOUR PICK



Elm Green with Day Dreamer Graphic



Cornflower Blue with Day Dreamer Graphic



Chinese Violet with Limited Edition Graphic



Castle Rock with Limited Edition Graphic



Green Pea with Graphic



Lemon Cream with Graphic



Navy with Graphic



Ivory with Graphic



Rosewater with Graphic



Lemon Cream with Graphic



Powder Blue with Graphic



Jet Black with Graphic

Sizes : S, M, L, XL, XXL



Graphic in the Front

E247 - Basic Crew Tee (Printed)
Slim Fit | Regular Length

Why We Love It!

- Fabric: Soft & naturally breathable stretch cotton jersey
- Detail 1: Stretch rib neck band with dyed to match cover stitch detail for a sporty look
- Detail 2: Available in solids, melanges, yarn dye stripes, graphic prints and all over prints

TAKE YOUR PICK

Pastel Turquoise Daisy Flower Print	Elemental Blue Daisy Flower Print	Elm Green Flower Bud Print	Rouge Flower Bud Print	Rosewater Bird Print
Walnut Avocado Print	Soft Pink Strawberry Print	Soft Aqua Whale Print	Lemon Cream Deer Print	Purple Slate Bird Print
Lilac Iris Whale Print	Green Pea Deer Print	Navy Bird Print	Jet Black Deer Print	

Sizes : S, M, L, XL, XXL

E3G5 - Square Tee With Graphic
Oversized Fit | Cropped Length

Why We Love It!

- Fabric: Super soft cotton French terry
- Detail 1: Stretch rib neck band
- Detail 2: Cropped length short sleeve t-shirt
- Detail 3: Drop shoulder oversized fit for elevated style
- Detail 4: Inspirational graphic at back

TAKE YOUR PICK

Pastel Turquoise with Celestial Dreamer Graphic	Bright White with Celestial Dreamer Graphic
Amber Yellow with Cosmic Dreamer Graphic	Jet Black with Cosmic Dreamer Graphic

Sizes : S, M, L, XL, XXL

new



Side Slit and Round Hem Detailing

E308 - Waffle Round Hem Tee Relaxed Fit | Regular Length

Why We Love It!

- Fabric: Waffle structured cotton fabric
- Detail 1: Rounded hem for better hip coverage
- Detail 2: Crew neck
- Detail 3: Yoke at the back for better fit and movement

TAKE YOUR PICK



Sizes : S, M, L, XL, XXL



Cropped Length and Mindful Graphic

E3G4 - Boxy Tee Oversized Fit | Cropped Length

Why We Love It!

- Fabric: Waffle structured cotton fabric
- Detail 1: Rounded hem for better hip coverage
- Detail 2: Crew neck
- Detail 3: Yoke at the back for better fit and movement

TAKE YOUR PICK



Sizes : S, M, L, XL, XXL



High Low Bottom

E305 - High Low Tee

Relaxed Fit | Regular Length

Why We Love It!

- Fabric: Soft & naturally breathable stretch cotton jersey
- Detail 1: Stretch rib neck band
- Detail 2: High low details at the bottom hem
- Detail 3: Available in solids

TAKE YOUR PICK



Sizes : S, M, L, XL, XXL



E047 - Basic Crew Tee (Solid)

Slim Fit | Regular Length

Why We Love It!

- Fabric: Soft & naturally breathable stretch cotton jersey
- Detail 1: Stretch rib neck band with dyed to match cover stitch detail for a sporty look
- Detail 2: Available in solids, melanges, yarn dye stripes, graphic prints and all over prints

TAKE YOUR PICK



Sizes : S, M, L, XL, XXL



High Low Bottom with Side Slit

E061 - Tunic Tee
Relaxed Fit | Mid Thigh Length

Why We Love It!

- Fabric: Soft & naturally breathable lightweight cotton jersey
- Detail 1: Long tunic length offers comfortable hip coverage
- Detail 2: Side slits allow easy movement
- Detail 3: Mindful graphics inspire positivity
- Detail 4: Available in solids, mélangé and yarn dyed stripes

TAKE YOUR PICK

				
Navy with Graphic	Green Stone with Graphic	Dry Blood with Graphic	Purple Slate with Graphic	Ash Grey with Graphic
				
Rouge Melange with Graphic	Thai Green Melange with Graphic	Powder Blue Melange with Graphic	Jet Black with Graphic	

Sizes : M, L, XL, XXL






EA61 - Tunic Tee
Relaxed Fit | Mid Thigh Length

Why We Love It!

- Fabric: Soft & naturally breathable lightweight cotton jersey fabric
- Detail 1: Long tunic length offers comfortable hip coverage
- Detail 2: Side slits allow easy movement
- Detail 3: Mindful graphics inspire positivity
- Detail 4: Available in solids, mélangé and yarn dyed stripes

TAKE YOUR PICK

	
Dry Blood Stripe with Graphic	Green Stone Stripe with Graphic
	
Fern Green Stripe with Graphic	Black & White Stripe with Graphic

Sizes : M, L, XL, XXL

new



Functional Side Pocket

E702 - Boxer Shorts Relaxed Fit | Mid-thigh Length

Why We Love It!

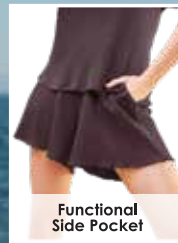
- Fabric: Super soft 100% cotton French terry
- Detail 1: Smart terry shorts to hangout at home or go out for a walk
- Detail 2: Soft elasticated waistband with adjustable drawstring to customize your fit
- Detail 3: Functional pockets to stash your essentials
- Detail 4: Comfortable mid-thigh length
- Detail 5: Contrast color binding at leg opening for fashionable look

TAKE YOUR PICK



Sizes : S, M, L, XL, XXL

new



Functional Side Pocket

E703 - Waffle Shorts Relaxed Fit | Regular Length

Why We Love It!

- Fabric: Honeycomb structured cotton polyester fabric
- Detail 1: Piping details at the side panel
- Detail 2: Mesh at the bottom for breathability & style statement
- Detail 3: Yoke at the back for better fit and movement

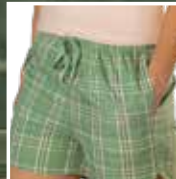
TAKE YOUR PICK



Sizes : S, M, L, XL, XXL



Adjustable Drawstring and Side Pockets



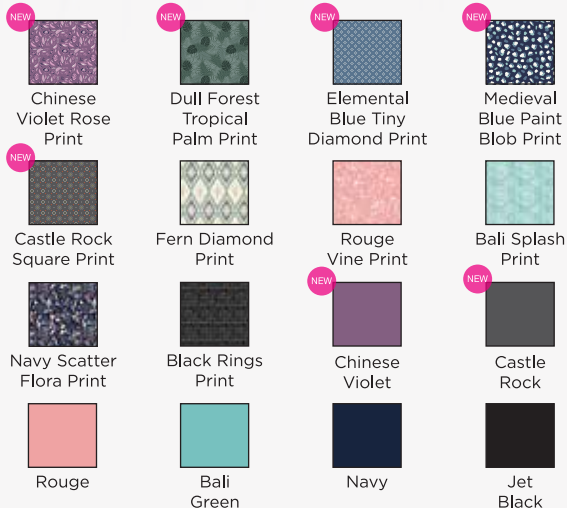
Adjustable Drawstring and Side Pockets

E062 - Basic Shorts
Relaxed Fit | Mid Rise | Mid-Thigh Length

Why We Love It!

- Fabric: Super soft 100% cotton slub jersey fabric
- Detail 1: Designed for home wear so you feel smart, relaxed & comfortable all day
- Detail 2: Soft elasticated waistband with adjustable drawstring to customize your fit
- Detail 3: Comes with 2 functional cross pockets to keep your essentials
- Detail 4: Available in beautiful prints and solid colours

TAKE YOUR PICK



Sizes : S, M, L, XL, XXL

E7A1 - Hangout Shorts
Relaxed Fit | Mid Rise | Mid Thigh Length

Why We Love It!

- Fabric: Soft & light cotton
- Detail 1: Smart all over printed cotton shorts to lounge in or sleep in
- Detail 2: Soft elasticated waistband with adjustable drawstring to customize your fit
- Detail 3: Curved bottom hem
- Detail 4: Functional on seam pockets to stash your essentials

TAKE YOUR PICK



Sizes : S, M, L, XL, XXL



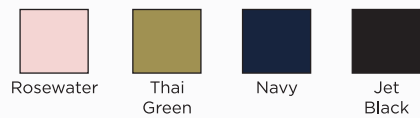
Side Pockets

E078 - Comfy Shorts
Relaxed Fit | Mid Rise | Mid-Thigh Length

Why We Love It!

- Fabric: Super soft 100% cotton french terry fabric
- Detail 1: Smart terry shorts designed to lounge at home or go out for a walk
- Detail 2: Soft elasticated waistband with adjustable drawstring to customize your fit
- Detail 3: Comes with 2 functional cross pockets to keep your essentials

TAKE YOUR PICK



Sizes : S, M, L, XL



Adjustable Drawstring and Side Pockets

E044 - City Shorts
Slim Fit | Mid Rise | Knee-Length

Why We Love It!

- Fabric: Soft naturally breathable cotton spandex jersey fabric
- Detail 1: Gently embraces your hips and relaxes along your legs
- Detail 2: Designed with a wide elasticated waistband with adjustable grosgrain drawstring
- Detail 3: Comes with 2 functional invisible zipper pockets

TAKE YOUR PICK



Sizes : S, M, L, XL, XXL



E080 - Relax Bermuda
Relaxed Fit | Mid Rise | Knee-length

Why We Love It!

- Fabric: Super soft 100% cotton french terry fabric
- Detail 1: Smart terry shorts designed to lounge at home or go out for a walk
- Detail 2: Soft elasticated waistband with adjustable drawstring to customize your fit
- Detail 3: Comes with 2 functional cross pockets to keep your essentials
- Detail 4: Knee-length shorts offers ample coverage

TAKE YOUR PICK



Sizes : S, M, L, XL, XXL



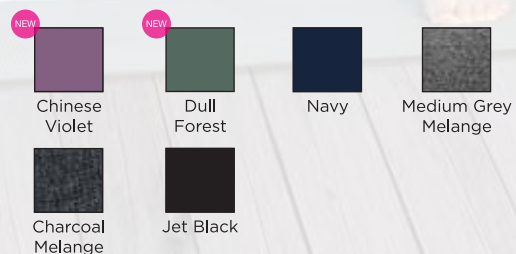
Adjustable Drawstring

E018 - Lounge Capri
Slim Fit | Mid Rise | Capri Length

Why We Love It!

- Fabric: Soft, naturally breathable stretch cotton fabric
- Detail 1: Gently hugs the hips and fits straight along the legs
- Detail 2: Dyed to match adjustable drawstring on waistband
- Detail 3: Comes with 2 functional invisible zipper pockets

TAKE YOUR PICK



Sizes : S, M, L, XL



Comes with Side Zipper Pockets

EA64 - Shop In Culotte
Relaxed Fit | Mid Rise | Crop Length

Why We Love It!

- Fabric: Super soft & drapey viscose stretch jersey fabric
- Detail 1: Designed to lounge in all day feeling relaxed
- Detail 2: Soft elasticated back waistband with flat front for a smooth non bulky fit at the waist
- Detail 3: Stylish side slit at the leg opening helps to move freely and feel cool & comfortable in summer
- Detail 4: Comes with one invisible zipper functional pocket

TAKE YOUR PICK



Strawberry Ditsy Dot Print



Lavender Mandala Print



Navy Optical Print



Black Pixie Print



Mauve Bloom Print



Navy Shibori Print

Sizes : S, M, L, XL, XXL



Comes with Side Zipper Pockets

E064 - Shop In Culotte
Relaxed Fit | Mid Rise | Crop Length

Why We Love It!

- Fabric: Super soft & drapey viscose stretch jersey fabric
- Detail 1: Designed to lounge in all day feeling relaxed
- Detail 2: Soft elasticated back waistband with flat front for a smooth non bulky fit at the waist
- Detail 3: Stylish side slit at the leg opening helps to move freely and feel cool & comfortable in summer
- Detail 4: Comes with one invisible zipper functional pocket

TAKE YOUR PICK



Dry Blood



Strawberry



Castle Grey



Navy



Jet Black

Sizes : S, M, L, XL, XXL



Inside Adjustable Drawstring

E070 - Yoga Legging
Slim Fit | Mid Rise | Ankle Length

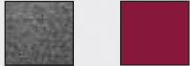
Why We Love It!

- Fabric: Soft & naturally breathable stretch cotton jersey
- Detail 1: Slim Fit leggings gently hugs your hips and along the legs
- Detail 2: Inside adjustable drawstring waistband
- Detail 3: Flat seam construction gives a light and smooth look

TAKE YOUR PICK



Jet Black Greek Blue Army Green Navy



Medium Grey Melange Mahogany

Sizes : S, M, L, XL, XXL



Adjustable Drawstring & Side Pockets

E4A5 - Hangout Pant
Relaxed Fit | Mid Rise | Regular Length

Why We Love It!

- Fabric: 100% combed cotton woven fabric
- Detail 1: Designed to lounge at home in comfort and style with a tapered snug leg opening
- Detail 2: Elasticated waistband with adjustable drawstring
- Detail 3: Functional on seam pockets to stash your essentials

TAKE YOUR PICK



Sizes : S, M, L, XL, XXL



Elastic Waistband with Adjustable Drawstring

E4A3 - Slounge Pant
Relaxed Fit | Mid Rise | Regular Length

Why We Love It!

- Fabric: Soft and light modal fabric
- Detail 1: Designed with a straight leg bottom opening
- Detail 2: Elasticated waistband with adjustable drawstring
- Detail 3: Functional on seam pockets for your essentials

TAKE YOUR PICK



Soft Green Bling Print



Soft Pink Block Print



Robin Block Print



Black Bling Print



Rouge Garden Print



Navy Hounds Print

Sizes : S, M, L, XL, XXL



Side Pockets

E014 - Lounge Pants
Slim Fit | Mid Rise | Regular Length

Why We Love It!

- Fabric: Soft & naturally breathable stretch cotton jersey fabric
- Detail 1: Gently hugs the hips and fits straight along the legs
- Detail 2: Dyed to match adjustable drawstring on waistband
- Detail 3: Comes with 2 functional invisible zipper pockets

TAKE YOUR PICK



Chinese Violet



Dull Forest



Navy



Terra Cotta



Army Green



Dry Blood



Medium Grey Melange



Charcoal Melange



Jet Black

Sizes : S, M, L, XL, XXL



E060 - Relax Pants
Slim Fit | Mid Rise | Ankle Length

Why We Love It!

- Fabric: Stretch french terry
- Detail 1: Wide waistband with soft knitted elastic offers comfortable waist support
- Detail 2: Two invisible zipper pockets to keep your essentials safe
- Detail 3: Dyed to match grosgrain drawstring
- Detail 4: Tapered leg smart pants to relax in or hang out

TAKE YOUR PICK



Navy Melange



Mahogany Melange



Dry Blood Melange



Charcoal Melange



Medium Grey Melange



Wood Cork

Sizes : S, M, L, XL, XXL



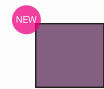
7/8 Length with U-shaped Slit Hem

E048 - Shop-in Pants (Solid)
Relaxed Fit | Mid Rise | 7/8 Length

Why We Love It!

- Fabric: Soft & drapery 4-way stretch viscose jersey
- Detail 1: 7/8 length sits above the ankle
- Detail 2: Elasticated waistband with adjustable metal end drawstrings
- Detail 3: U-shaped slit hem at the leg opening
- Detail 4: Comes with 2 functional pockets

TAKE YOUR PICK



Chinese Violet



Dull Forest



Dry Blood



Terra Cotta



Jet Black

Sizes : S, M, L, XL, XXL



7/8 Length with U-shaped Slit Hem

E048 - Shop-in Pants (Print)
Relaxed Fit | Mid Rise | 7/8 Length

Why We Love It!

- Fabric: Soft & drapery 4-way stretch viscose jersey
- Detail 1: 7/8 length sits above the ankle
- Detail 2: Elasticated waistband with adjustable metal end drawstrings
- Detail 3: U-shaped slit hem at the leg opening
- Detail 4: Comes with 2 functional pockets

TAKE YOUR PICK



Sizes : S, M, L, XL, XXL



Side Pockets

Mesh Panel at Bottom

E403 - Piping Jogger
Relaxed Fit | Regular Length

Why We Love It!

- Fabric: Honeycomb structure cotton polyester fabric
- Detail 1: Piping details at the side panel
- Detail 2: Mesh at the bottom for breathability & style statement
- Detail 3: Yoke at the back for better fit and movement
- Detail 4: Side Pockets to keep your essentials

TAKE YOUR PICK



Sizes : S, M, L, XL, XXL





FABULOUS INNERS



Explore the art of layering with our versatile Inners collection, offering essential pieces designed to complement and enhance your wardrobe.



E025 - Fabulous Inners
Stay New Tank - Slim Fit

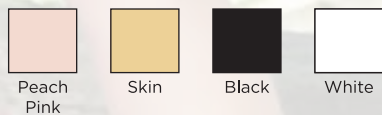
Why We Love It!

- Fabric: Soft, naturally breathable cotton fabric. Specially finished fabric retains the newness even after several washes
- Detail 1: Double scoop neckline to layer or wear as outerwear

Style Tip:

- Pair it with Enamor Essentials' Basic Shorts, Shop In Culotte, City Shorts, Lounge Jogger, Lounge Pants or Shop In Pants

TAKE YOUR PICK



Sizes : S, M, L, XL



E001 - Fabulous Inners
Camis - Slim Fit

Why We Love It!

- Fabric: Super soft stretch cotton fabric
- Fit: Slim fit
- Detail 1: Adjustable self-fabric straps
- Detail 2: Chic Minimalistic designs make it ideal as an outerwear, innerwear or sleepwear

TAKE YOUR PICK



Sizes : S, M, L, XL



E003 - Fabulous Inners
Camis - Slim Fit

Why We Love It!

- Fabric: Soft stretch cotton fabric
- Fit: Slim fit
- Detail 1: Wardrobe must-have for layering
- Detail 2: Adjustable self-fabric straps gives the ideal fit

TAKE YOUR PICK



Skin



White



Black

Sizes : S, M, L, XL



E007 - Fabulous Inners
Camis - Slim Fit

Why We Love It!

- Fabric: Modal fabric provides all day comfort and great fit
- Detail 1: Straight neckline pairs well with deep neckline tops
- Detail 2: Detachable / transparent straps option allows you to create your own style
- Detail 3: Rhinestone "e" logo gives it a luxe touch

TAKE YOUR PICK



Black



White



Skin

Sizes : S, M, L, XL



E095 - Fabulous Inners
Dress Slip - Body Fit

Why We Love It!

- Fabric: Naturally breathable soft stretch cotton jersey with added spandex for stretch and shape retention
- Fit: Body fit with tunic length
- Detail 1: Designed this long camisole to be worn under salwar kameez, kurtas & kurtis
- Detail 2: Long side slit for ease of movement
- Detail 3: Adjustable spaghetti straps to customise the fit to your comfort

TAKE YOUR PICK



Skin



White

Sizes : S, M, L, XL



Full Front View

E032 - Fabulous Inners
Cycling Shorts - Hugged Fit

Why We Love It!

- Fabric: Cotton stretch fabric provides easy movement
- Fit: Hugged Fit
- Detail 1: Soft, elastic waistband makes it ideal for daily use
- Detail 2: Designed to wear these cycling shorts under dresses and skirts

TAKE YOUR PICK



Black



White



Skin



Grey
Melange

Sizes : S, M, L, XL





SHAPEWEAR



Define your silhouette with confidence using our Shapewear collection, expertly designed to sculpt and enhance your curves.



TS09 (LOW & MEDIUM COMPRESSION)

Hi-Waist Thigh Slimmer

SEAMLESS

- Seamless shaper for a smooth look under clingy garments • Hi-waist fit ensures no muffin-top bulges • Soft bones for a no-roll-down promise
- Medium compression for smoothening rolls and bulges for a seamless silhouette • Soft and stretchy nylon fabric for flexible all day comfort
- Engineered knitting for zoned areas of compression and lift • Waist and tummy smoothening • Butt lifting and natural rounded shaping • Thigh smoothening for a jiggle free hold

Product benefits:

1. Tummy Flattening
2. Waist Slimming
3. Butt Lifting
4. Thigh Slimming




Buff



Black

Size: M, L, XL, XXL

Recommended for:  Pear Shape



BR08 (LOW & MEDIUM COMPRESSION)

Hi-Waist Slimmer

SEAMLESS

- Seamless shaper for a smooth look under clingy garments • Hi-waist fit ensures no muffin-top bulges • Soft bones for a no-roll-down promise
- Medium compression for smoothening rolls and bulges for a seamless silhouette • Soft and stretchy nylon fabric for flexible all day comfort
- Engineered knitting for zoned areas of compression and lift • Waist and tummy smoothening • Butt lifting and natural rounded shaping

Product benefits:

1. Tummy Flattening
2. Waist Shaping
3. Butt Lifting




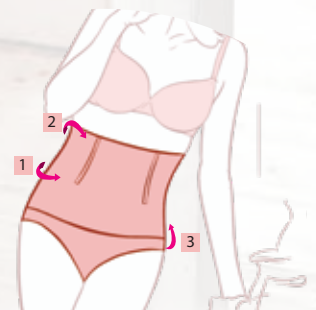
Buff



Black

M, L, XL, XXL

Recommended for:  Apple Shape





BR11 (LOW & MEDIUM COMPRESSION)

Hi-Waist Thigh Slimmer

SEAMLESS

- Hi-tech bonded support at tummy for a flattering, smooth compressed shaping
- No muffin-top bulges with its high waistline
- Super thin and flat leg opening for a smooth pinch free hold
- Contoured back for a flattering and natural curve
- Good compression of tummy and smoothening over hip
- Light and ultra smooth for all day or party perfect pairing

Product benefits:

1. Tummy Flattening
2. Waist Slimming
3. Butt Lifting
4. Thigh Slimming




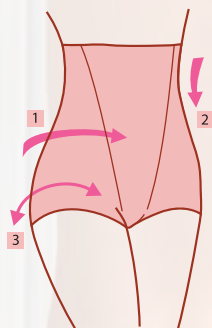
Black



Honey Beige

Size: M, L, XL, XXL

Recommended for:  Pear Shape



HeatSkins

THERMAL WEAR



THERMAL WEAR

Embrace warmth and comfort in any weather with our Thermal collection, engineered to keep you cozy and stylish. Explore innovative designs crafted with premium materials, ensuring optimal insulation and effortless layering for every adventure.



HEAT GENERATING FABRIC
keeps you warm



LIGHTWEIGHT AND SNUG FIT
perfect for slim-fit outerwear



ULTRA 4 WAY STRETCH
for flexibility



ANTIMICROBIAL & SWEAT WICKING
keeps you fresh



SOFT FINISH SEAMS
for minimal friction



SUPER SOFT FABRIC
feels cozy and comfortable



TH01 (SLEEVELESS VEST)

Why we love it!

- Innovative moisture absorbing and heat generating fibre
- Fits like second skin
- Locks in body warmth
- V-neck disappears under scoop or plunge tops
- Fitted hip coverage even when bending
- 4-way stretch and added spandex lets you be flexible
- Ultra light and zero bulk lets you wear it under any fitted outerwear

Tops:



Pear
Pink



Black



Pale
Skin

S, M, L, XL, XXL



TH02 (3/4th SLEEVE TOP)

Why we love it!

- Innovative moisture absorbing and heat generating fibre
- Fits like second skin
- Locks in body warmth
- V-neck disappears under scoop or plunge tops
- Thumb loop helps keep sleeve in place when putting on fitted outerwear
- Fitted hip coverage even when bending
- 4-way stretch and added spandex lets you be flexible
- Ultra light and zero bulk lets you wear it under any fitted outerwear

Tops:



Pear
Pink

Black

Pale
Skin

S, M, L, XL, XXL



TH03 (LEGGINGS)

Why we love it!

- Innovative moisture absorbing and heat generating fibre
- Fits like second skin
- Locks in body warmth
- Flat and firm waist band stays in place even when bending
- Stirrup at the bottom avoids rolling up of the legging
- 4-way stretch and added spandex lets you be flexible
- Ultra light and zero bulk lets you wear it under any fitted outerwear

Bottoms:



Pear
Pink



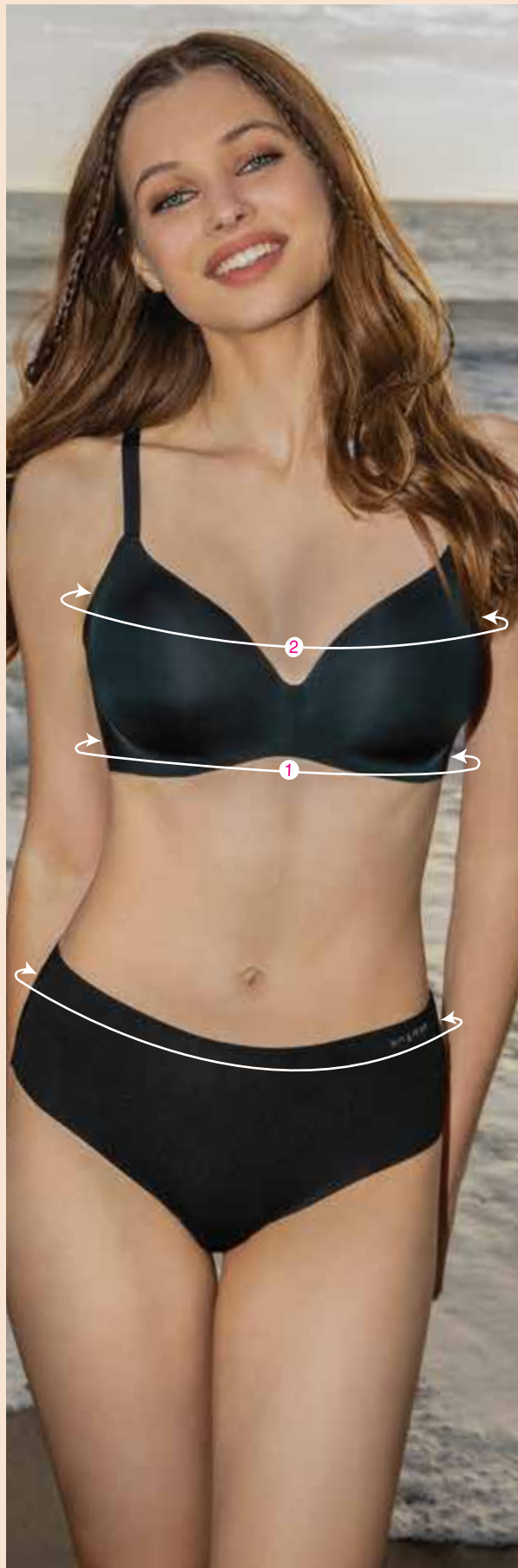
Black



Pale
Skin

S, M, L, XL, XXL

Know your right size. Get the right fit.



Bra

Step 1: Under-bust size

Using a soft tape, measure around the rib cage directly under the bust. The tape should be held tight, edge to edge with no space between it and your body.

Step 2: Over-bust size

Measure completely around the bust at the fullest point. Hold the tape tight against the back but not too tight in the front.

Step 3: Refer the size chart

Consult the Enamor sizing chart to find out your right size.

(Note: The measurements are in centimeters)

Size 32

Under-bust
68-72 cms
Over-bust
Cup B : 84 - 86 cms
Cup C : 86 - 88 cms
Cup D : 88 - 90 cms

Size 34

Under-bust
73-77 cms
Over-bust
Cup B : 89 - 91 cms
Cup C : 91 - 93 cms
Cup D : 93 - 96 cms
Cup DD : 97 - 100 cms
Cup F : 100 - 103 cms
Cup G : 103 - 106 cms

Size 36

Under-bust
78-82 cms
Over-bust
Cup B : 94 - 96 cms
Cup C : 96 - 98 cms
Cup D : 98 - 101 cms
Cup DD : 102 - 105 cms
Cup F : 105 - 108 cms
Cup G : 108 - 111 cms

Size 38

Under-bust
83-87 cms
Over-bust
Cup B : 99 - 101 cms
Cup C : 101 - 103 cms
Cup D : 103 - 106 cms
Cup DD : 107 - 110 cms
Cup F : 110 - 113 cms
Cup G : 113 - 116 cms

Size 40

Under-bust
88-92 cms
Over-bust
Cup B : 104 - 106 cms
Cup C : 106 - 108 cms
Cup D : 108 - 111 cms
Cup DD : 112 - 115 cms
Cup F : 115 - 118 cms
Cup G : 118 - 121 cms

Size 42

Under-bust
93-97 cms
Over-bust
Cup B : 109 - 111 cms
Cup C : 111 - 113 cms
Cup D : 113 - 116 cms
Cup DD : 117 - 120 cms

Size 44

Under-bust
98-102 cms
Over-bust
Cup B : 114 - 116 cms
Cup C : 116 - 118 cms
Cup D : 118 - 121 cms
Cup DD : 122 - 125 cms

(For best results, measure yourself without any clothes in front of a mirror)

Panty

Measure around the broadest part of your hip making sure the measuring tape remains level all the way around.

Then, consult the Enamor sizing chart to find out your correct size.

(Note: The measurements are in centimeters)

	S	M	L	XL	XXL
HIP(cms)	86.5-91.5	96.5-101.5	106.5-111.5	116.5-121.5	127.5-132.5
HIP(inches)	34-36	38-40	42-44	46-48	50-52

Nightwear

Consult the Enamor sizing chart to find out your right size.

(Note: The measurements are in inches)

	S	M	L	XL	XXL
Over-bust:	31-33	33-36	36-39	39-42	42-45
Waist	26-29	29-32	32-35	35-38	38-41

Sports Bra

Consult the Enamor sizing chart to find out your right size.

(Note: The measurements are in centimeters)

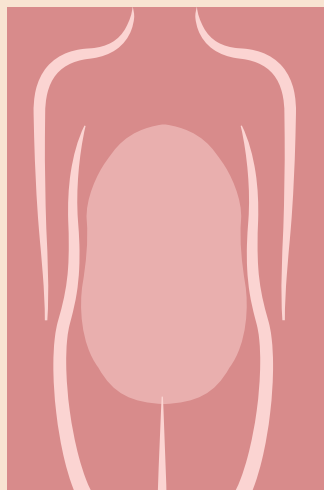
	CUP SIZE	BAND SIZE	UNDER-BUST	OVER-BUST
XS	30	B / C	63-67	79-83
S	32	B / C	68-72	84-88
M	34	B / C	73-77	89-93
L	36	B / C	78-82	94-98
XL	38	B / C	83-87	99-103
XXL	40	B / C	88-92	104-108

Shapewear

- In order to know which shapewear fits your body best, measure your high waist, low waist and hips with a tape held straight around the body. To measure your high waist, hold the tape three points above the waist (the point where the waist goes in when you bend sideways), to measure your low waist, hold it 12 cms below the waist and to measure your hips, hold it 22 cms below the waist or at the point where your hips look widest.
- As per your measurements, select a garment from the size chart that targets your problem area. For e.g. If your waist size is small, but your hips are wider than the bust or shoulders, select a thigh shaper and go by the size that tallies with your hips. If your tummy measures more than your hips, go for waist slimmers or high waist slimmers that tally with your waist size in centimeters.

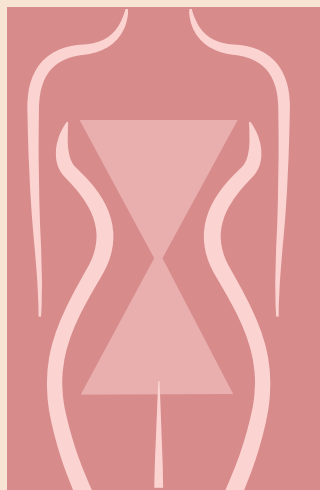
Shapewear - Waist (cm)		Shapewear - Hip (cm)	
69-78.5	M	94-102	M
79-88.5	L	104-113	L
89.5-98.5	XL	114-120	X
99-108.5	XXL	120-127	X

Body Types



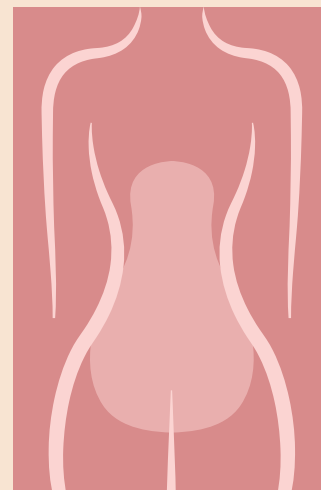
Apple Shape | 🍏

Apple shaped women have narrow legs/thighs. They are wider around the tummy, abdomen, bust and lack a well defined waist.



Hourglass Shape | ⌚

In hourglass shaped women, the hip and bust are almost of equal size, with a narrow waist. Body fat distribution tends to be equal around the upper and lower body.



Pear Shape | 🍑

In pear shaped women, the hip ratio is larger than the bust. Women of this body type tend to have thick thighs, large rear and heavy hips.

Know your right size. Get the right fit.



Beginners Bra

Consult the Enamor sizing chart to find out your right size.
(Note: The measurements are in centimeters)

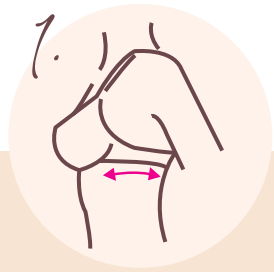
	XXS	XS	S	M	L
Under Bust (cms)	58-62	63-67	68-72	73-77	78-82
Over Bust (cms)	70-76	75-81	80-86	85-91	90-96



Thermal Wear

Consult the Enamor sizing chart to find out your right size.
(Note: The measurements are in centimeters)

	S	M	L	XL	XXL
Bust (cms)	80-86	87-93	94-101	102-110	111-119
Waist (cms)	59-68	69-78	79-88	89-98	99-108
Hip (cms)	84-93	94-103	104-113	114-123	124-133



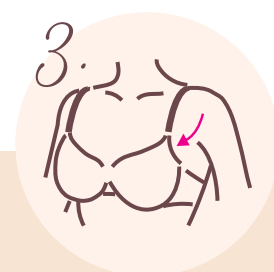
Band

from front to back should be parallel to the ground, and it should not curve up or down.



Cup

size has to be right. If too big, the cup will gape open and if too small, the breasts will overflow on top.



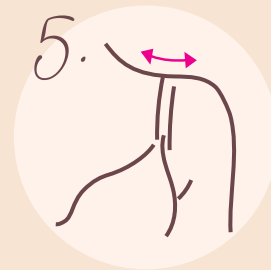
Armhole

needs to sit without loose gaping or tight spillage.



Bottom Curve

should sit flat against your chest and the cups should not rise away from your body.



Straps

should not dig in to your shoulder. 2 fingers should comfortably pass between the shoulder and the strap.

Bra

Check Points





Know your right size. Get the right fit.

Tops

Over-bust
Measure completely around the bust at the fullest point. Hold the tape tight against the back but not too tight in the front.

Consult the Enamor sizing chart to find out your right size.
(Note: The measurements are in centimetres and inches)

	XS	S	M	L	XL	XXL
Bust (cms)	71.5-76.5	79-84	86.5-91.5	94-99	101.5-106.5	109-114
Bust (inches)	28-30	31-33	34-36	37-39	40-42	43-45
Waist (cms)	56-61	63.5-68.5	71-76	78.5-84	86.5-91.5	94.5-99.5
Waist (inches)	22-24	25-27	28-30	31-33	34-36	37-39

Bottoms

Measure around the broadest part of your hip making sure the measuring tape remains in level all the way around.
Then, consult the Enamor sizing chart to find out your correct size.

(Note: The measurements are in centimetres and inches)




	XS	S	M	L	XL	XXL
Waist (cms)	56-61	63.5-68.5	71-76	78.5-84	86.5-91.5	94-99
Waist (inches)	22-24	25-27	28-30	31-33	34-36	37-39
Hips (cms)	84-89	91.5-96.5	99-104	106.5-111.5	114-119	122-127
Hips (inches)	33-35	36-38	39-41	42-44	45-47	48-50





fabulous, as I am

It's easy to shop now, visit
www.enamor.co.in

Follow us as enamorindia on   

Modenik Lifestyle Private Limited, 28, 35/5 Ferns Icon, Doddanekundi, Marathahalli,
Outer Ring Road, Bengaluru-560 037. Tel: 080-46561111.
For trade enquiries contact: enamormarketing@enamor.co

We strive to make the colours of our products as accurate as possible. But due to certain limitations of printing processes
the colours you see may not always be an accurate reproduction of the actual product.